

STATE OF ILLINOIS
DEPARTMENT OF TRANSPORTATION

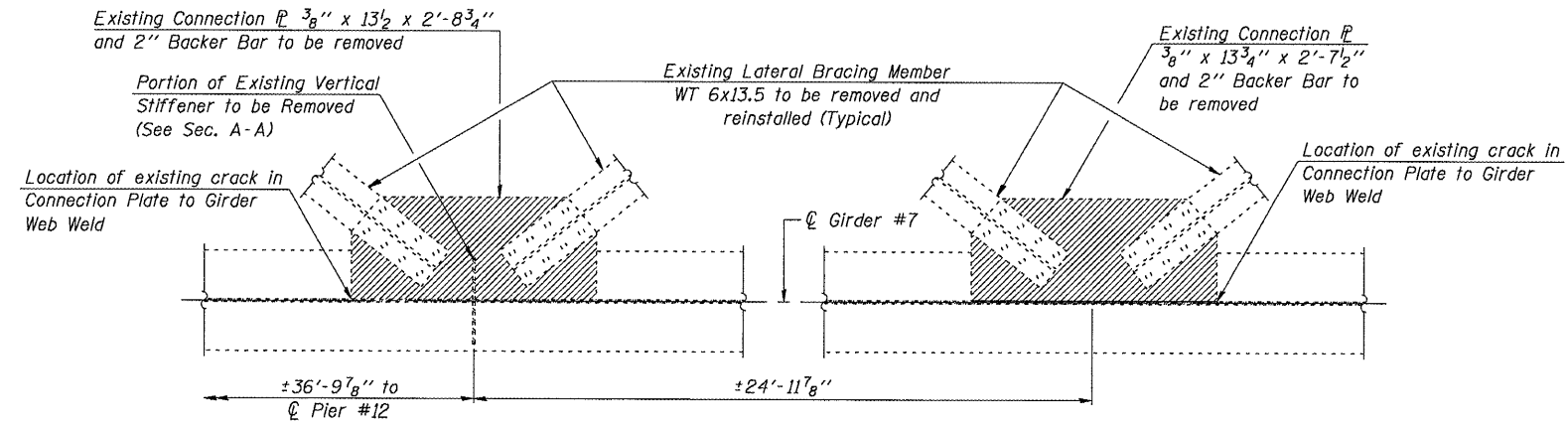
ROUTE NO.	SECTION	COUNTY	TOTAL SHEETS	SHEET NO.
FAJ-180	06-3,78-1-2	BUREAU/PUTNAM	12	7
FED. ROAD DIST. NO. 7	ILLINOIS	CONTRACT NO. 66734		

SHEET NO. 3
OF 8 SHEETS

Note: The cost of removal of lateral bracing connection plates, backer bars and vertical stiffener plates is included in the cost of Structural Steel Repair.

PROCEDURES FOR LATERAL BRACING CONNECTION PLATE REMOVAL:

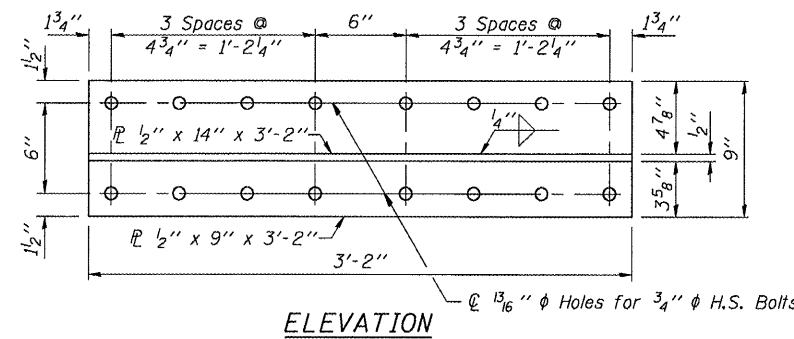
1. Remove existing 3/8" lateral bracing connection plates and backer bars. The minimum distance from cut in connection plate to face of web shall be 1/4" or the web to connection plate weld size. Remove portion of existing vertical stiffener. The minimum distance for cut in vertical stiffener shall be 1/4" or web to stiffener plate weld size. Material remaining on web, after removal of connection plates, backer bars and vertical stiffener, shall be removed by grinding as described below. Cuts shall be made parallel to the surface of the web without angling the cut towards the surface of the web. Equipment and method of cutting shall be approved by the Engineer. Any method of removal to be used shall ensure that no damage is done to the web. Cutting shall be done in a manner such that the paint on the opposite face of the web is not damaged. If damage occurs, the damaged area shall be repainted at the contractor's expense and procedures shall be modified to prevent damage at subsequent removal locations.
2. After cutting operations have been completed, remove material remaining on web by grinding. Grinding shall remove material to provide a smooth web surface. Web plate surfaces shall have a roughness average (Ra) or 250u in. or less. Grinding equipment shall be approved by the Engineer. The grinding operation should not gouge the girder web plate.
3. After grinding, the web surface at the repair locations shall be inspected using magnetic particle testing methods. Any cracks found shall be identified and reported to the Bureau of Bridges and Structures for further disposition.



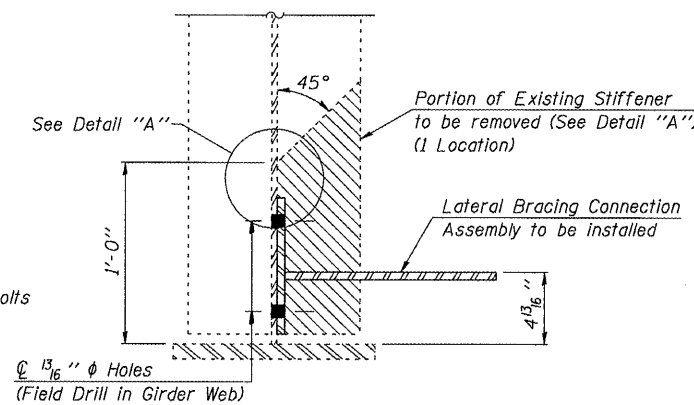
EXISTING LATERAL BRACING CONNECTION PLATE REMOVAL PLAN

(Span #12)

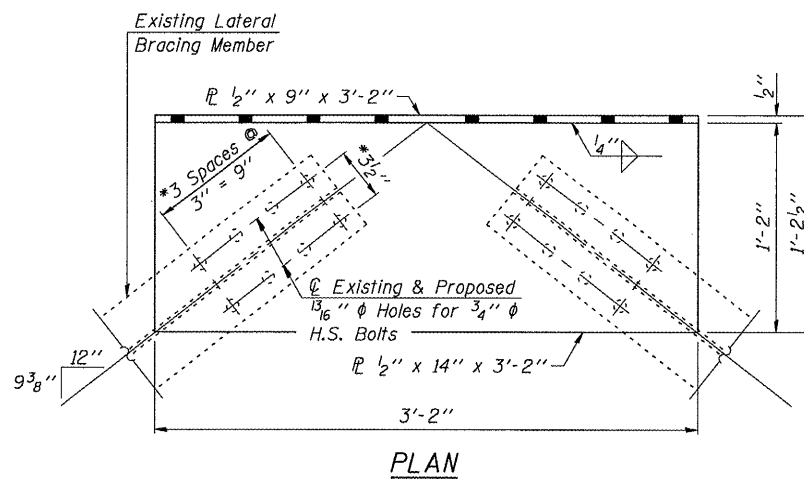
Note: Prior to the removal of the existing connection plates, lateral bracing members at the affected connections shall be removed and stored for later reinstallation. Cost shall be included with Structural Steel Repair.



ELEVATION



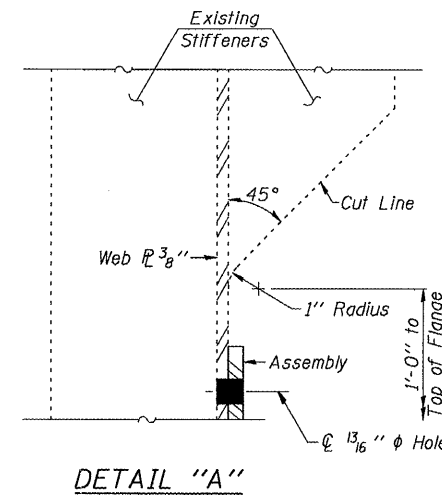
SECTION A-A



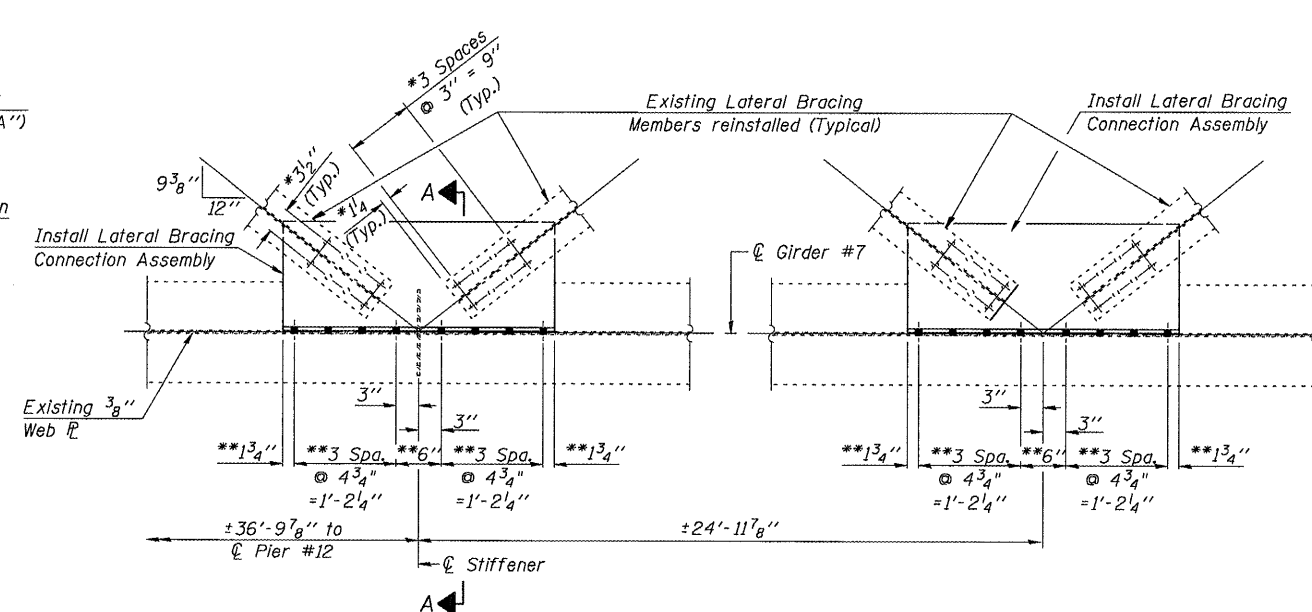
PLAN

LATERAL BRACING CONNECTION ASSEMBLY

(2- Required)



DETAIL "A"



LATERAL BRACING CONNECTION ASSEMBLY INSTALLATION PLAN

(Span #12)

*Use holes in existing lateral bracing members as a template for drilling holes in new Lateral Bracing Connection Assembly.

**Use holes in new Lateral Bracing Connection Assembly as a template for drilling holes in web of existing girder.

BILL OF MATERIAL

ITEM	UNIT	QUANTITY
Structural Steel Repair	Pound	280

LATERAL BRACING CONNECTION PLATE

REPAIR DETAILS

FAI ROUTE 180 OVER ILLINOIS RIVER

SECTION (06-3,78-1)-2

BUREAU/PUTNAM COUNTIES

S.N. 078-0001

DESIGNED	J.A.M.	200
CHECKED	A.R.K.	ENGINEER OF BRIDGE DESIGN
DRAWN	S.A.P.	PASSED
CHECKED	A.R.K. & J.A.M.	ENGINEER OF BRIDGES AND STRUCTURES