

F.A.I. RTE. 80	SECTION	COUNTY	TOTAL SHEETS	SHEET NO.
I-80	(32-2) RS-3	GRUNDY	9	1
FED. ROAD DIST. NO.	ILLINOIS	CONTRACT NO. 66737		

**INDEX OF SHEETS**

- 1 COVER SHEET
- 2 GENERAL NOTES & INDEX OF STANDARDS
- 3 SUMMARY OF QUANTITIES
- 4 SCHEDULES
- 5 TYPICAL SECTIONS AND MIX DESIGN
- 6 PROJECT LAYOUT SHEET
- 7 DETAILS
- 8 TRAFFIC CONTROL DETAIL
- 9 PATCHING DETAIL

**STATE OF ILLINOIS**  
**DEPARTMENT OF TRANSPORTATION**  
**DIVISION OF HIGHWAYS**  
**PROPOSED**  
**HIGHWAY PLANS**

**F.A.I. ROUTE 80 (I-80)**  
**SECTION (32-2) RS-3**

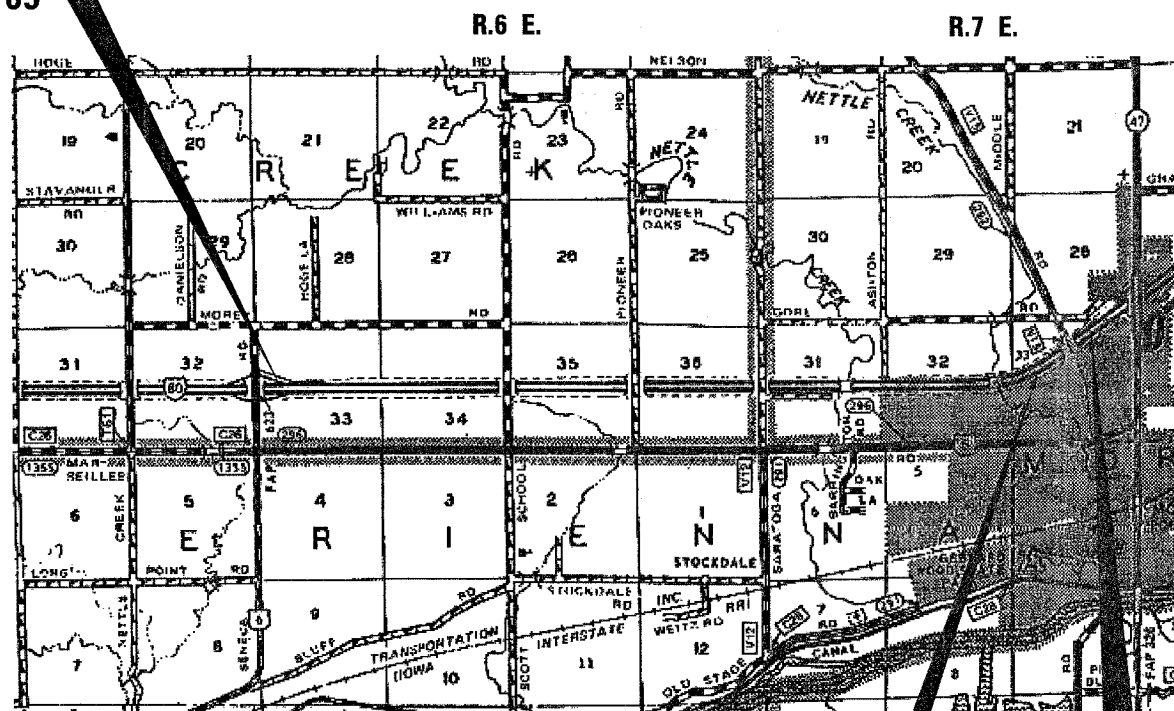
**GRUNDY COUNTY**

C - 93 - 016 - 08

**PROJECT DESCRIPTION**

0.5 MILES EAST OF SENECA EXIT TO 0.4 MILES WEST OF IL. 47

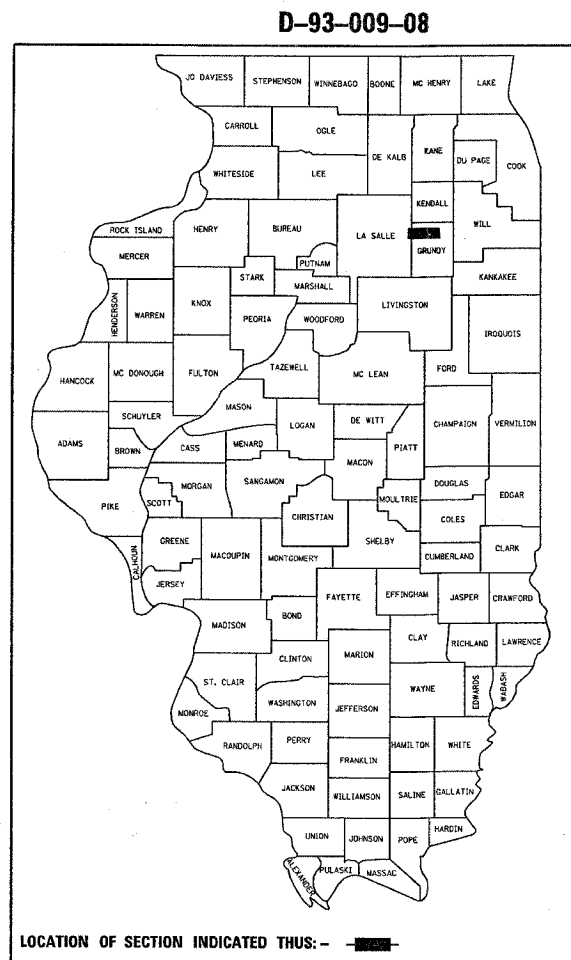
**PROJECT BEGINS**  
**MILE MARKER 105**  
**STA. 819 + 51.05**



**STATION EQUATION:**  
**STA. 1157 + 55.38 BK =**  
**STA. 1157 + 71.57 AH**

**END PROJECT**  
**MILE MARKER 112**  
**STA. 1200 + 73.48**

GROSS LENGTH = 38122.43 FEET. = 7.22 MILES.  
NET LENGTH = 38122.43 FEET. = 7.22 MILES.



**FUNCTION CLASSIFICATION**

**INTERSTATE**

**2008 ADT = 30300**

**P.V. = 58.8 % S.U. = 6.5 % M.U. = 34.7 %**

STATE OF ILLINOIS  
DEPARTMENT OF TRANSPORTATION  
DIVISION OF HIGHWAYS

SUBMITTED \_\_\_\_\_ 20\_\_

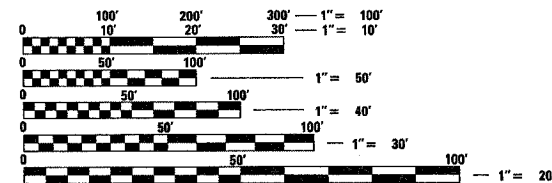
*George P. ...*  
DEPUTY DIRECTOR OF HIGHWAYS, REGION ENGINEER

*Eric E. ...*  
SENIOR ENGINEER OF DESIGN AND ENVIRONMENT

*Christine M. Reed*  
DIRECTOR OF HIGHWAYS, CHIEF ENGINEER

**PRINTED BY THE AUTHORITY**  
**OF THE STATE OF ILLINOIS**

MICROFILMED \_\_\_\_\_  
REEL NUMBER \_\_\_\_\_  
AWARDED \_\_\_\_\_  
RESIDENT ENGINEER \_\_\_\_\_  
AS BUILT CHANGES WERE MADE  
ON THE FOLLOWING SHEETS \_\_\_\_\_



FULL SIZE PLANS HAVE BEEN PREPARED USING STANDARD ENGINEERING SCALES. REDUCED SIZED PLANS WILL NOT CONFORM TO STANDARD SCALES. IN MAKING MEASUREMENTS ON REDUCED PLANS, THE ABOVE SCALES MAY BE USED.

J.U.L.I.E.  
JOINT UTILITY LOCATION INFORMATION FOR EXCAVATION  
1-800-892-0123  
OR 811

**PROJECT ENGINEER : D. BROVIAK**  
**UNIT CHIEF : S. FERGUSON**  
  
**DISTRICT 3 NO. (815) 434-6131**  
**CONTRACT NO. 66737**

PLOT DATE = Mar 31, 2008 - 11:40:36 AM  
FILE NAME = c:\projects\66737\cover.sht.dgn  
PLOT SCALE = 50.0000 / / IN.  
USER NAME = Fergusonse