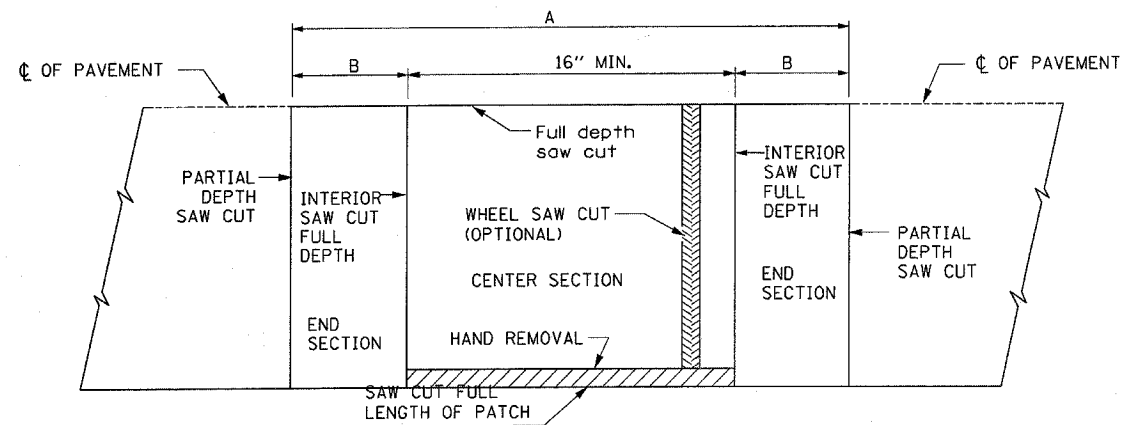
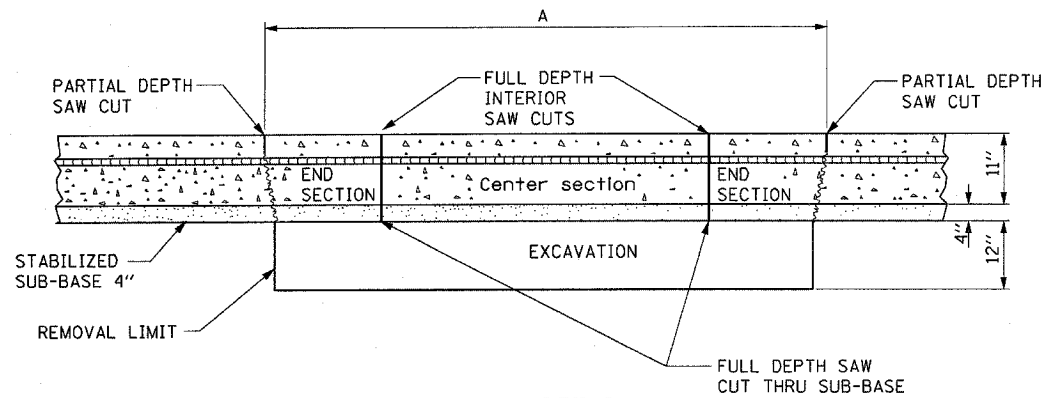


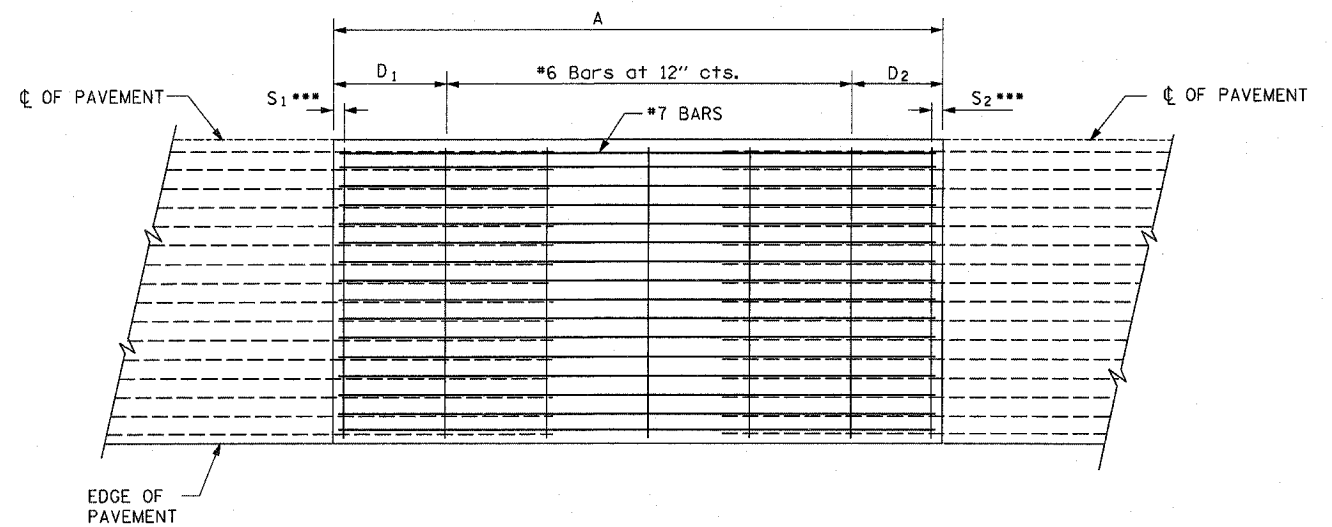
ALTERNATE SAWING DETAIL
(PCC SHOULDER)



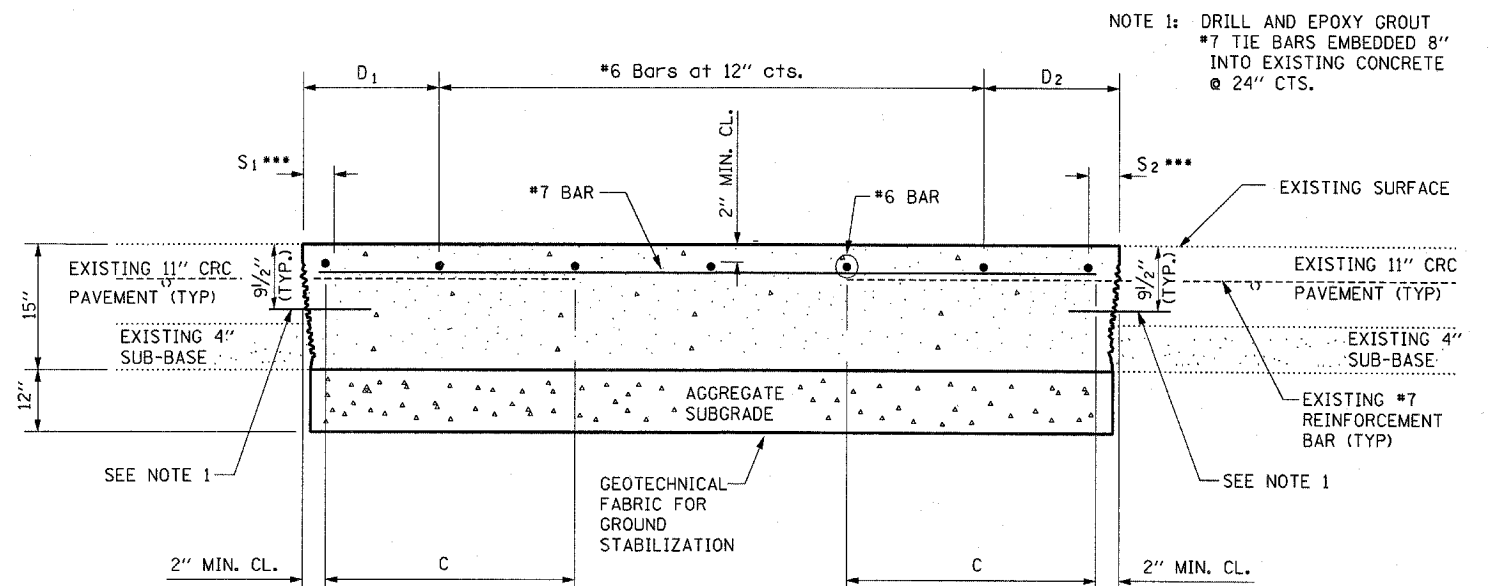
PAVEMENT SAWING DETAIL
(PCC SHOULDER)



REMOVAL DETAIL



PROPOSED PAVEMENT DETAIL
(AGAINST CONCRETE SHOULDER)



NOTE 1: DRILL AND EPOXY GROUT #7 TIE BARS EMBEDDED 8" INTO EXISTING CONCRETE @ 24" CTS.

PROPOSED CLASS A PATCHING DETAIL

EXISTING LONGITUDINAL REINFORCEMENT BARS	A (min.)	B (min.)	C (min.)
No. 7	6'-0"	24"	22"

NOTES:

- EVERY 3rd INTERSECTION MUST BE TIED
- LAP NEW REINFORCEMENT WITH EXISTING LONGITUDINAL REINFORCEMENT
- VARIABLES: WHERE S1 AND S2 ARE 2 1/2" MIN. AND 12" MAX. D1 = 2(S1) AND D2 = 2(S2)