

F.A.I. RTE. 80	SECTION	COUNTY	TOTAL SHEETS	SHEET NO.
I-80	(32-2) RS-3	GRUNDY	9	1
FED. ROAD DIST. NO.	ILLINOIS	CONTRACT NO. 66737		

**INDEX OF SHEETS**

- 1 COVER SHEET
- 2 GENERAL NOTES & INDEX OF STANDARDS
- 3 SUMMARY OF QUANTITIES
- 4 SCHEDULES
- 5 TYPICAL SECTIONS AND MIX DESIGN
- 6 PROJECT LAYOUT SHEET
- 7 DETAILS
- 8 TRAFFIC CONTROL DETAIL
- 9 PATCHING DETAIL

**STATE OF ILLINOIS**  
**DEPARTMENT OF TRANSPORTATION**  
**DIVISION OF HIGHWAYS**  
**PROPOSED**  
**HIGHWAY PLANS**

**F.A.I. ROUTE 80 (I-80)**  
**SECTION (32-2) RS-3**

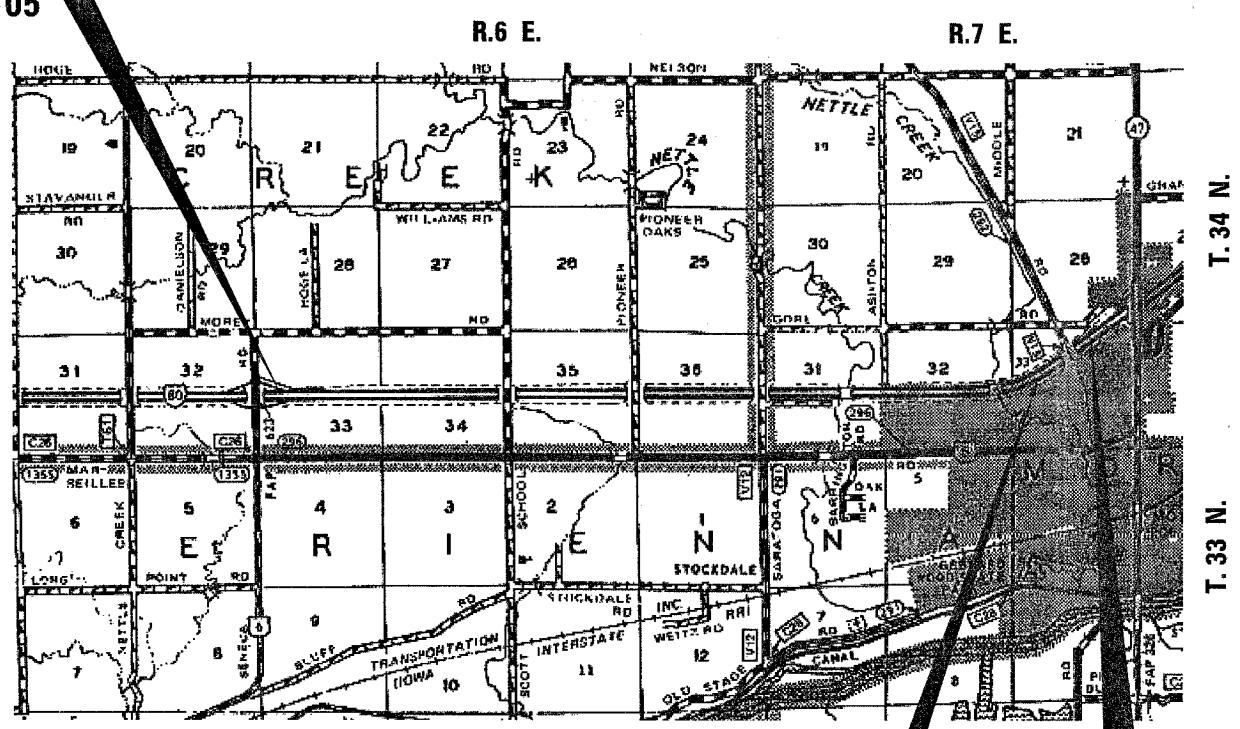
**GRUNDY COUNTY**

C - 93 - 016 - 08

**PROJECT DESCRIPTION**

0.5 MILES EAST OF SENECA EXIT TO 0.4 MILES WEST OF IL. 47

**PROJECT BEGINS**  
**MILE MARKER 105**  
**STA. 819 + 51.05**



**STATION EQUATION:**  
**STA. 1157 + 55.38 BK =**  
**STA. 1157 + 71.57 AH**

**END PROJECT**  
**MILE MARKER 112**  
**STA. 1200 + 73.48**

GROSS LENGTH = 38122.43 FEET. = 7.22 MILES.  
NET LENGTH = 38122.43 FEET. = 7.22 MILES.



**FUNCTION CLASSIFICATION**  
**INTERSTATE**  
**2008 ADT = 30300**  
**P.V. = 58.8 % S.U. = 6.5 % M.U. = 34.7 %**

STATE OF ILLINOIS  
DEPARTMENT OF TRANSPORTATION  
DIVISION OF HIGHWAYS

SUBMITTED \_\_\_\_\_ 20\_\_\_\_

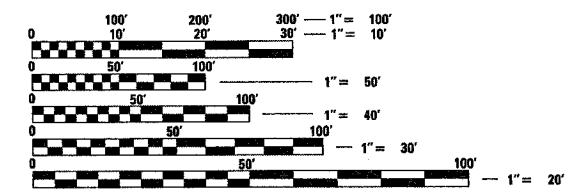
*George P. ...*  
DEPUTY DIRECTOR OF HIGHWAYS, REGION ENGINEER

*Eric E. ...*  
SENIOR ENGINEER OF DESIGN AND ENVIRONMENT

*Christine M. ...*  
DIRECTOR OF HIGHWAYS, CHIEF ENGINEER

**PRINTED BY THE AUTHORITY**  
**OF THE STATE OF ILLINOIS**

MICROFILMED \_\_\_\_\_  
REEL NUMBER \_\_\_\_\_  
AWARDED \_\_\_\_\_  
RESIDENT ENGINEER \_\_\_\_\_  
AS BUILT CHANGES WERE MADE  
ON THE FOLLOWING SHEETS \_\_\_\_\_



FULL SIZE PLANS HAVE BEEN PREPARED USING STANDARD ENGINEERING SCALES. REDUCED SIZED PLANS WILL NOT CONFORM TO STANDARD SCALES. IN MAKING MEASUREMENTS ON REDUCED PLANS, THE ABOVE SCALES MAY BE USED.

J.U.L.I.E.  
JOINT UTILITY LOCATION INFORMATION FOR EXCAVATION  
1-800-892-0123  
OR 811

**PROJECT ENGINEER : D. BROVIAK**  
**UNIT CHIEF : S. FERGUSON**

DISTRICT 3 NO. (815) 434-6131  
**CONTRACT NO. 66737**

PLOT DATE = Mar 31, 2008 - 11:40:36 AM  
FILE NAME = c:\projects\66737\cover.sht.dgn  
PLOT SCALE = 50.0000 / / IN.  
USER NAME = Fergusonse

GENERAL NOTES

THE THICKNESS OF HMA SHOWN ON THE PLANS IS THE NOMINAL THICKNESS. DEVIATIONS FROM THE NOMINAL THICKNESS WILL BE PERMITTED WHEN SUCH DEVIATIONS OCCUR DUE TO IRREGULARITIES IN THE EXISTING SURFACE OR BASE ON WHICH THE HMA IS PLACED.

EXCEPT AS NOTED ON THE PLANS, PAVEMENT GRADES SHOWN ARE AT THE TOP OF PAVEMENT SURFACES.

THE ENGINEER WILL BE THE SOLE JUDGE CONCERNING CURING TIME FOR THE VARIOUS HMA LIFTS.

FOR STABILIZATION, ALL TYPE III BARRICADES SHALL REQUIRE A MINIMUM OF FOUR SAND BAGS PER BARRICADE.

ON EXISTING PAVEMENT WHICH MAY BE SUPERELEVATED, THE NEW HMA PAVEMENT SHALL BE BUILT WITH THE SAME SUPERELEVATION UNLESS NEW SUPERELEVATION RATES ARE GIVEN ON THE PLANS.

ALL ELEVATIONS REFERRING TO U.S.G.S. MEAN SEA LEVEL DATUM.

ANY REFERENCE TO A STANDARD IN THESE PLANS SHALL BE INTERPRETED TO MEAN THE EDITION AS INDICATED BY THE SUBNUMBER SHOWN IN THE LIST OF STANDARDS OR THE COPY INCLUDED IN THESE PLANS.

THE FOLLOWING RATES OF APPLICATION HAVE BEEN USED IN CALCULATING PLAN QUANTITIES:

GRANULAR MATERIALS	2.05	TONS / CU YD
BITUMINOUS MAT PRIME COAT	0.08	GAL / SQ YD OR
	0.375	GAL / SQ YD
AGGREGATE PRIME COAT	0.002	TONS / SQ YD
HMA RESURFACING	112	LBS / SQ YD / IN
SHORT TERM PAVEMENT MARKING	10	FT /100 FT OF APPLICATION
MIX FOR CRACKS, JTS & FLGWYS	0.0003	TONS / SQ YD
LEVEL BINDER (HAND METHOD)	0.0005	TONS / SQ YD
SUPPLEMENTAL WATERING	3	GAL / SQ YD / APPLICATION
CALCIUM CHLORIDE	2	LB / SQ YD / APPLICATION
TEMPORARY DITCH CHECKS	5	TONS AGGREGATE

MEMBERS OF JULIE KNOWN TO BE WITHIN THE LIMITS OF THE IMPROVEMENT ARE:

N/A

NON-MEMBERS OF JULIE KNOWN TO BE WITHIN THE LIMITS OF THE IMPROVEMENT ARE:

NONE

STANDARDS

000001-05	STANDARD SYMBOLS, ABBREVIATIONS AND PATTERNS
001006	DECIMAL OF AN INCH AND OF A FOOT
442001-04	CLASS A PATCHES
667101	PERMANENT SURVEY MARKERS
701401-04	LANE CLOSURE, FREEWAY/EXPRESSWAY
701411-04	LANE CLOSURE, MULTILANE, AT ENTRANCE OR EXIT RAMP FOR SPEEDS $\geq$ 45 MPH
701426-02	LANE CLOSURE, MULTILANE INTERMITTENT OR MOVING OPERATION, FOR SPEEDS $\geq$ 45 MPH
701901	TRAFFIC CONTROL DEVICES
781001-02	TYPICAL APPLICATIONS RAISED REFLECTIVE PAVEMENT MARKERS

STATE OF ILLINOIS  
DEPARTMENT OF TRANSPORTATION  
DISTRICT THREE

PREPARED BY: *R. P. ...*  
DISTRICT STUDIES & PLANS ENGINEER

DATE: 3-31-08

EXAMINED BY: *Herb Jones*  
DISTRICT CONSTRUCTION ENGINEER

*Jim ...*  
DISTRICT MATERIALS ENGINEER

*Steve A. ...*  
DISTRICT OPERATIONS ENGINEER

FILE NAME * c:\projects\11408\cover\hdgn	USER NAME = Fergusonaa	DESIGNED - DRAWN -	REVISED - REVISED -	<b>STATE OF ILLINOIS DEPARTMENT OF TRANSPORTATION</b>	<b>GENERAL NOTES</b>	F.A.I. RTE. I-80	SECTION ( 32-2 ) RS-3	COUNTY GRUNDY	TOTAL SHEETS 9	SHEET NO. 2		
						SCALE:	SHEET NO. OF SHEETS	STA.	TO STA.	CONTRACT NO. 66737		
						FED. ROAD DIST. NO. ILLINOIS FED. AID PROJECT						

SUMMARY OF QUANTITIES			100% STATE
CODE NO.	ITEM	CONSTRUCTION CODE	
		UNIT	I000 TOTAL QUANTITY
21001000	GEOTECHNICAL FABRIC FOR GROUND STABILIZATION	SQ YD	218.7
40600895	CONSTRUCTING TEST STRIP	EACH	1
40600985	PORTLAND CEMENT CONCRETE SURFACE REMOVAL - BUTT JOINT	SQ YD	160
44200630	CLASS A PATCHES, TYPE II, 15 INCH	SQ YD	173.3
44200631	CLASS A PATCHES, TYPE III, 15 INCH	SQ YD	45.3
44213000	PATCHING REINFORCEMENT	SQ YD	218.7
44213200	SAW CUTS	FOOT	1510
67100100	MOBILIZATION	L SUM	1
70100205	TRAFFIC CONTROL AND PROTECTION, STANDARD 701401	EACH	1
70100420	TRAFFIC CONTROL AND PROTECTION, STANDARD 701411	EACH	1
70106800	CHANGEABLE MESSAGE SIGN	CAL MO	1
70300100	SHORT-TERM PAVEMENT MARKING	FOOT	3811
70300625	TEMPORARY PAINT PAVEMENT MARKING LINE 4"	FOOT	38106
70300635	TEMPORARY PAINT PAVEMENT MARKING LINE 6"	FOOT	9526
70301000	WORK ZONE PAVEMENT MARKING REMOVAL	SQ FT	1269
* 78000200	THERMOPLASTIC PAVEMENT MARKING - LINE 4"	FOOT	38106
* 78004230	PREFORMED PLASTIC PAVEMENT MARKING, TYPE B - INLAID - LINE 6"	FOOT	9526
* 78100100	RAISED REFLECTIVE PAVEMENT MARKER	EACH	953
78300200	RAISED REFLECTIVE PAVEMENT MARKER REMOVAL	EACH	953
X0325518	ULTRA THIN BONDED WEARING COURSE	SQ YD	101616.6
Z0001050	AGGREGATE SUBGRADE 12"	SQ YD	218.7
Z0075310	TIE BARS 3/4"	EACH	252
X0325702	NIGHTTIME WORK ZONE LIGHTING	L SUM	1
X0325969	PORTABLE, VEHICLE MOUNTED, CHANGEABLE MESSAGE BOARD	CAL DA	8
X0325967	POLYMER MODIFIED ASPHALT EMULSION MEMBRANE	GALLON	17274.8

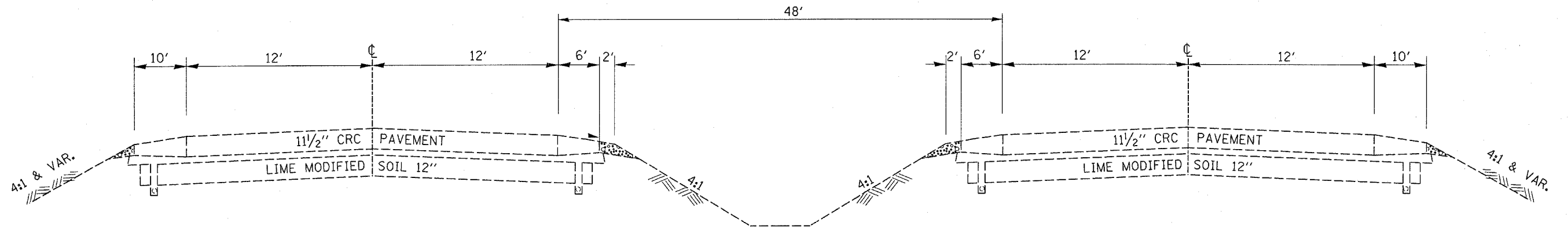
\* SPECIALTY ITEMS

I-80 PATCHING SCHEDULE CLASS A 15"									
MILE MARKER 105( 819+51.05) TO 112( 1200+73.48) EAST BOUND									
LOG MILE	DRIVING LANE (FT)	PASSING LANE (FT)	TYPE III (SY)	TYPE II (SY)	GEOTECH. FABRIC FOR GROUND STABILIZ.	AGGREGATE SUBGRADE 12"	PATCH REINF.	SAW CUTS	TIE BARS 3/4"
STARTING AT 105 (STA)			SQ YD	SQ YD	SQ YD	SQ YD	SQ YD	FOOT	EACH
0.4 (840+63.05)	6			8.0	8.0	8.0	8.0	66	12
0.7 (856+47.05)	10			13.3	13.3	13.3	13.3	78	12
0.78 (860+69.45)	6			8.0	8.0	8.0	8.0	66	12
0.8 (861+75.05)	6			8.0	8.0	8.0	8.0	66	12
0.84 (863+86.25)	20		26.67		26.7	26.7	26.7	120	12
0.85 (864+39.05)	10	8		24.0	24.0	24.0	24.0	140	24
1.2 (882+87.05)	6			8.0	8.0	8.0	8.0	66	12
1.28 (887+09.45)	6			8.0	8.0	8.0	8.0	66	12
1.6 (903+99.05)	10			13.3	13.3	13.3	13.3	78	12
3 (977+91.05)	14		18.67		18.7	18.7	18.7	100	12
3.6 (1009+59.05)	6			8.0	8.0	8.0	8.0	66	12
4.1 (1035+99.05)	6			8.0	8.0	8.0	8.0	66	12
5.3 (1099+35.05)	6			8.0	8.0	8.0	8.0	66	12
5.4 (1104+63.05)	6			8.0	8.0	8.0	8.0	66	12
5.45 (1107+27.05)	6			8.0	8.0	8.0	8.0	66	12
5.45 (1107+27.05)	6			8.0	8.0	8.0	8.0	66	12
5.46 (1107+79.85)	6			8.0	8.0	8.0	8.0	66	12
5.8 (1125+75.05)	6			8.0	8.0	8.0	8.0	66	12
6.4 (1157+43.05)	8			10.7	10.7	10.7	10.7	70	12
6.5 (1162+54.86)	6			8.0	8.0	8.0	8.0	66	12
<b>TOTAL</b>			<b>45.3</b>	<b>173.3</b>	<b>218.7</b>	<b>218.7</b>	<b>218.7</b>	<b>1510.0</b>	<b>252.0</b>

PAVEMENT MARKINGS									
LOCATION	LENGTH	THERMOPLASTIC PAVEMENT MARKING		PREFORMED PVMT MK TAPE INLAID	TEMPORARY			SHORT TERM	WORK ZONE
		4"		6"	4"		6"	PVMT MK	PVMT MK REM
		WHITE LIN FT	YELLOW LIN FT	WHITE LIN FT	WHITE LIN FT	YELLOW LIN FT	WHITE LIN FT	LIN FT	SQ FT
GRUNDY COUNTY									
819+51.06 TO 1157+55.38	33804.3	33804.3	33804.3	8451	33804.3	33804.3	8451	3380.43	1125.7
1157+ 71.57 TO 1200+73.48	4301.91	4301.91	4301.91	1075	4301.91	4301.91	1075	430.191	143.3
<b>PROJECT TOTAL</b>		<b>38106</b>	<b>38106</b>	<b>9526</b>	<b>38106</b>	<b>38106</b>	<b>9526</b>	<b>3811</b>	<b>1269</b>

MAINLINE SCHEDULE							
LOCATION	LENGTH	WIDTH	AREA	ULTRA THIN BONDED WEARING SURFACE	POLYMER MODIFIED ASPHALT EMULSION	PCC SURFACE REMOVAL BUTT JT	TEMP. RAMP
	FEET	FEET	SQ YD	SQ YD	GALLON	SQ YD	SQ YD
STA. 819+51.05 TO STA. 1157+55.38	33804.33	24	90144.88	90144.88	15324.6	80	10
STA. 1157+71.57 TO STA. 1200+73.48	4301.91	24	11471.76	11471.76	1950.2	80	10
<b>LINE TOTAL</b>	<b>38106.24</b>		<b>101617</b>	<b>101616.64</b>	<b>17274.8</b>	<b>160</b>	<b>20</b>

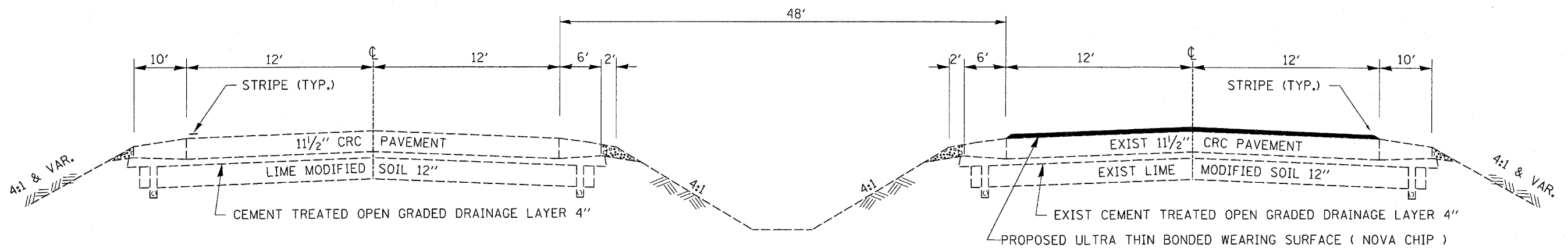
RAISED REFLECTIVE MARKERS			
LOCATION		1 WAY CRYSTAL	REMOVAL
		EACH	EACH
STA. 819+51.05 TO STA. 1157+55.38	33804.3	845	845
STA. 1157+71.57 TO STA. 1200+73.48	4301.91	108	108
<b>TOTAL</b>		<b>953</b>	<b>953</b>



**MAINLINE  
TYPICAL SECTION  
STA. 819 + 51.05 TO STA. 1200 + 73.48  
WEST BOUND**

**MAINLINE  
TYPICAL SECTION  
STA. 819 + 51.05 TO STA. 1200 + 73.48  
EAST BOUND**

**EXISTING TYPICAL**



**MAINLINE  
TYPICAL SECTION  
STA. 819 + 51.05 TO STA. 1200 + 73.48  
WEST BOUND**

**MAINLINE  
TYPICAL SECTION  
STA. 819 + 51.05 TO STA. 1200 + 73.48  
EAST BOUND**

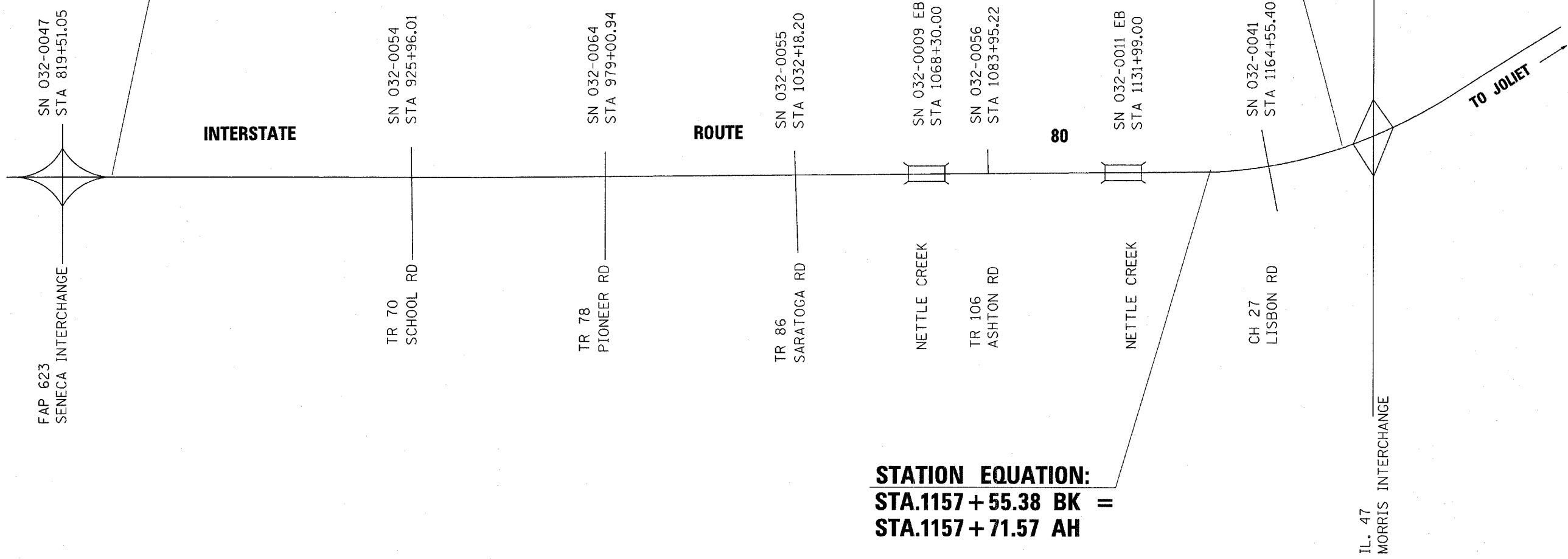
**PROPOSED TYPICAL**

FILE NAME = c:\projects\ed20908\vooversht.dgn	USER NAME = fergusonso	DESIGNED -	REVISED -	<b>STATE OF ILLINOIS DEPARTMENT OF TRANSPORTATION</b>	<b>TYPICAL SECTIONS</b>			F.A.J. RTE. I-80	SECTION ( 32-2 ) RS-3	COUNTY GRUNDY	TOTAL SHEETS 9	SHEET NO. 5
	PLOT SCALE = 50.0000' / IN.	CHECKED -	REVISED -		SCALE:	SHEET NO.	OF	SHEETS	STA.	TO STA.	CONTRACT NO. 66737	
	PLOT DATE = Mar 31, 2008 - 04:15:28 PM	DATE -	REVISED -		FED. ROAD DIST. NO. ILLINOIS FED. AID PROJECT							



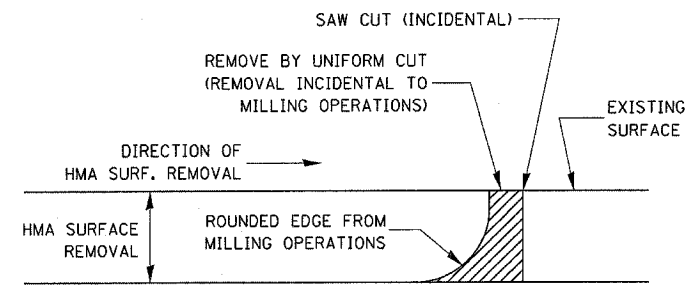
**PROJECT BEGINS  
MILE MARKER 105  
STA. 819 + 51.05**

**END PROJECT  
MILE MARKER 112  
STA. 1200 + 73.48**



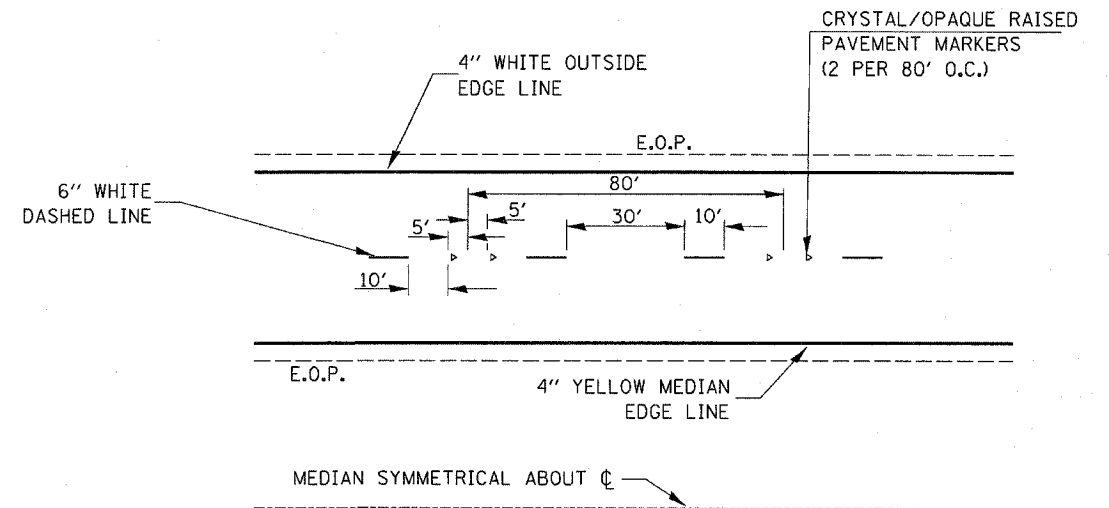
**STATION EQUATION:  
STA.1157 + 55.38 BK =  
STA.1157 + 71.57 AH**

FILE NAME = c:\projects\ed0908\vooversht.dgn	USER NAME = fergusonsa	DESIGNED -	REVISED -	<b>STATE OF ILLINOIS DEPARTMENT OF TRANSPORTATION</b>	<b>PROJECT LAYOUT SHEET</b>			F.A.I. RTE.	SECTION	COUNTY	TOTAL SHEETS	SHEET NO.
	PLOT SCALE = 50.0000' / IN.	CHECKED -	REVISED -					I-80	( 32-2 ) RS-3	GRUNDY	9	6
	PLOT DATE = Mar 31, 2008 - 04:59:23 PM	DATE -	REVISED -					CONTRACT NO. 66737				
				SCALE:	SHEET NO.	OF	SHEETS	STA.	TO STA.	FED. ROAD DIST. NO. ILLINOIS FED. AID PROJECT		

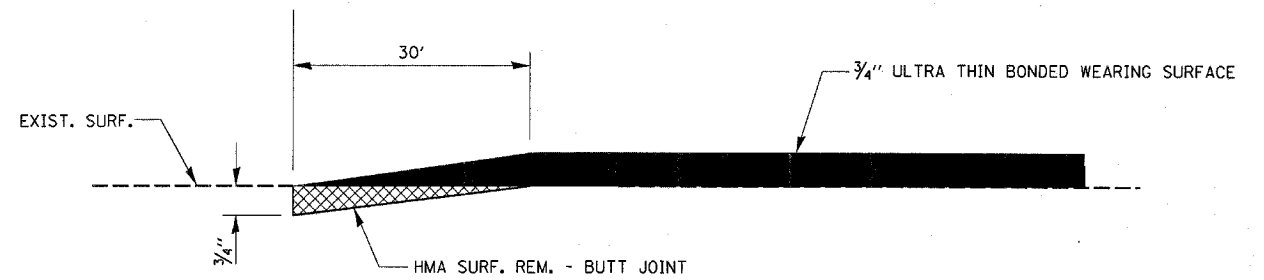


NOTE:  
 WHEN MILLING OPERATIONS PRODUCE A ROUNDED EDGE,  
 THEN A SAW CUT SHALL BE USED TO MANUFACTURE  
 A PERPENDICULAR EDGE AS SHOWN IN THE DETAIL.  
 THE ENGINEER SHALL BE THE SOLE JUDGE  
 CONCERNING THE USE OF THIS DETAIL

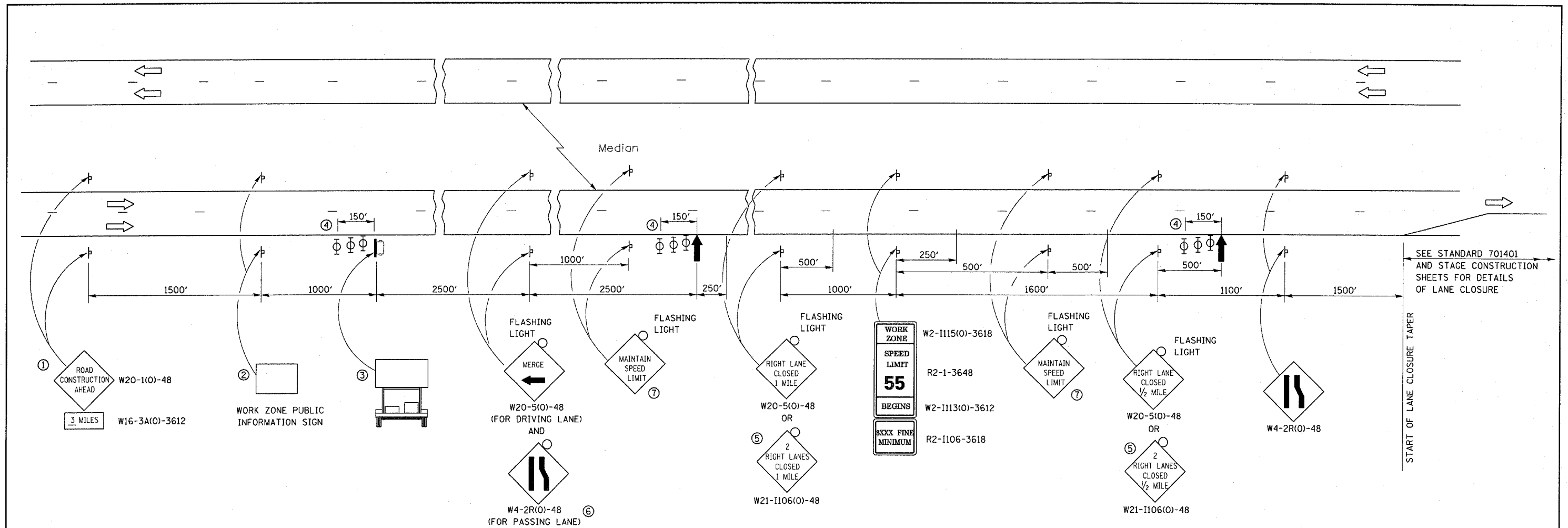
### HMA DETAIL AT BUTT JOINTS



### TYPICAL PAVEMENT MARKINGS



FILE NAME = c:\projects\ed0908\coversht.dgn	USER NAME = fergusonsa	DESIGNED -	REVISED -	STATE OF ILLINOIS DEPARTMENT OF TRANSPORTATION	DETAILS	F.A.I. RTE.	SECTION	COUNTY	TOTAL SHEETS	SHEET NO.
	PLOT SCALE = 50.0000' / IN.	DRAWN -	REVISED -			I-80	( 32-2 ) RS-3	GRUNDY	8	7
PLOT DATE = Mar 31, 2008 - 04:59:17 PM	CHECKED -	DATE -	REVISED -	SCALE:	SHEET NO. OF SHEETS STA. TO STA.	CONTRACT NO. 66737				
						FED. ROAD DIST. NO. ILLINOIS FED. AID PROJECT				



- ↑ ARROW BOARD
- ☐ PORTABLE CHANGEABLE MESSAGE SIGN
- ⌚ SIGN
- ⊕ TYPE II BARRICADE, DRUM, OR VERTICAL BARRICADE WITH MONODIRECTIONAL FLASHING LIGHT

- ① THE ROAD CONSTRUCTION AHEAD SIGN SHALL BE LOCATED 3 MILES IN ADVANCE OF THE PROJECT LIMITS.
- ② THE MESSAGE AND SIZE OF THE WORK ZONE PUBLIC INFORMATION SIGN SHALL BE AS SPECIFIED BY THE DEPARTMENT.
- ③ TO BE PLACED IN THE MEDIAN WHEN FEASIBLE. THE MESSAGE BOARD SHALL BE USED TO DISPLAY STATUS OF LANES WITHIN THE PROJECT. THE PRIMARY MESSAGES SHALL BE:  
"RIGHT LANE CLOSED" / " x MILES AHEAD"  
"LEFT LANE CLOSED" / " x MILES AHEAD"  
"ALL LANES OPEN"
- ④ THREE, TYPE II BARRICADES, DRUMS OR VERTICAL BARRICADES AT 50' CENTERS.
- ⑤ THIS SIGN SHALL BE USED WHEN 2 LANES ARE CLOSED.
- ⑥ SWITCH THESE TWO SIGNS AND THE DIRECTION OF THE MERGE ARROW WHEN PASSING LANE IS CLOSED.
- ⑦ 48"x48" SIGN WITH 7" LETTER HEIGHT.

**GENERAL NOTE:**

THIS STANDARD IS USED WHERE AT ANY TIME A LANE IS CLOSED ON A FREEWAY/EXPRESSWAY.

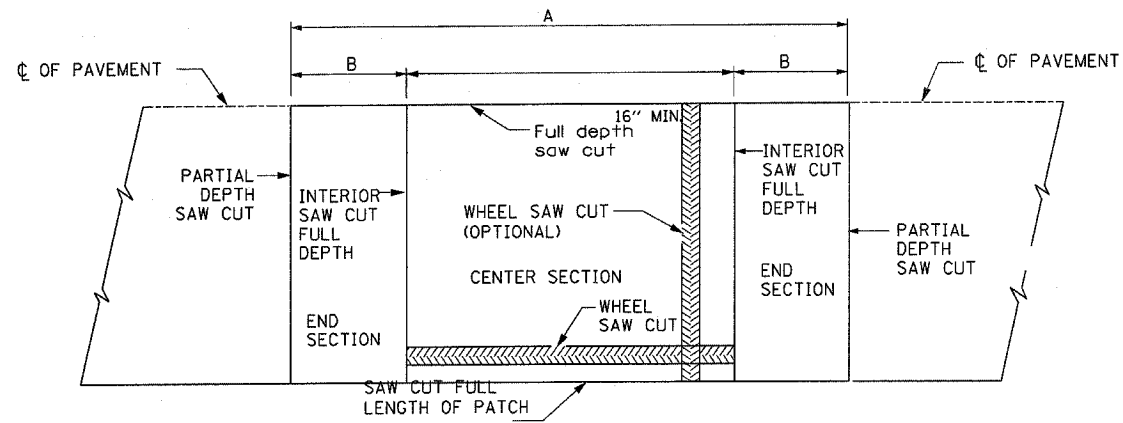
WHEN THE LEFT LANE IS CLOSED, LEFT LANE CLOSED SIGNS SHALL BE SUBSTITUTED FOR THE RIGHT LANE CLOSED SIGNS.

ALL SIGNS, MESSAGE BOARDS AND OTHER TRAFFIC CONTROL DEVICES UP TO AND INCLUDING THE FIRST ARROW BOARD ARE STATIONARY. THE OTHER SIGNS AND OTHER ARROWBOARD SHALL BE MOVED AS NECESSARY TO MAINTAIN THE REQUIRED DISTANCE FROM THE START OF THE LANE CLOSURE TAPER(S).

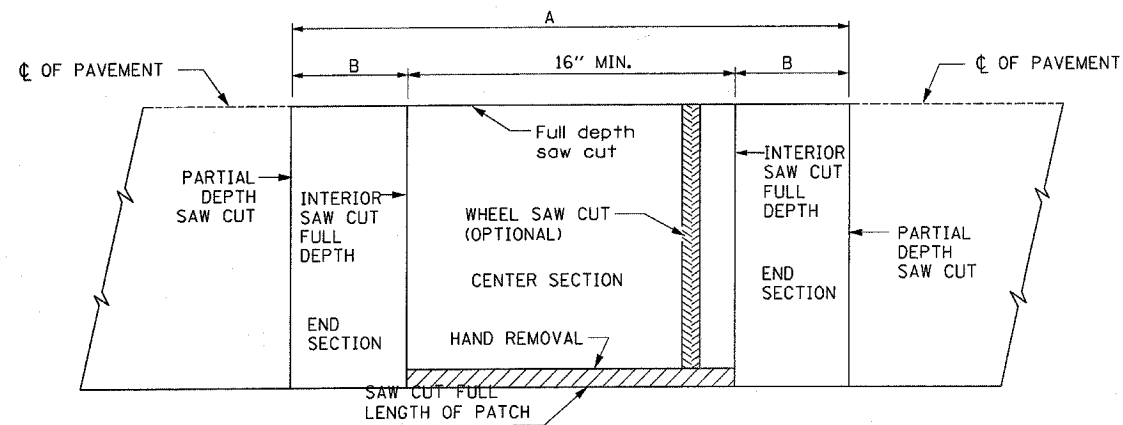
SEE SPECIAL PROVISIONS.

FILE NAME = c:\projects\ed02908\cover.sht.dgn	USER NAME = fergusonae	DESIGNED -	REVISED -	<b>STATE OF ILLINOIS DEPARTMENT OF TRANSPORTATION</b>	<b>APPROACH TO LANE CLOSURE, FREEWAY /EXPRESSWAY</b>	F.A.I. RTE. I-80	SECTION ( 32-2 ) RS-3	COUNTY GRUNDY	TOTAL SHEETS 9	SHEET NO. 8	
PLOT SCALE = 50.0000' / IN.	CHECKED -	REVISED -	SCALE:			SHEET NO. OF SHEETS STA.	TO STA.	CONTRACT NO. 66737			
PLOT DATE = Mar 31, 2008 - 04:59:13 PM	DATE -	REVISED -				FED. ROAD DIST. NO. ILLINOIS FED. AID PROJECT					

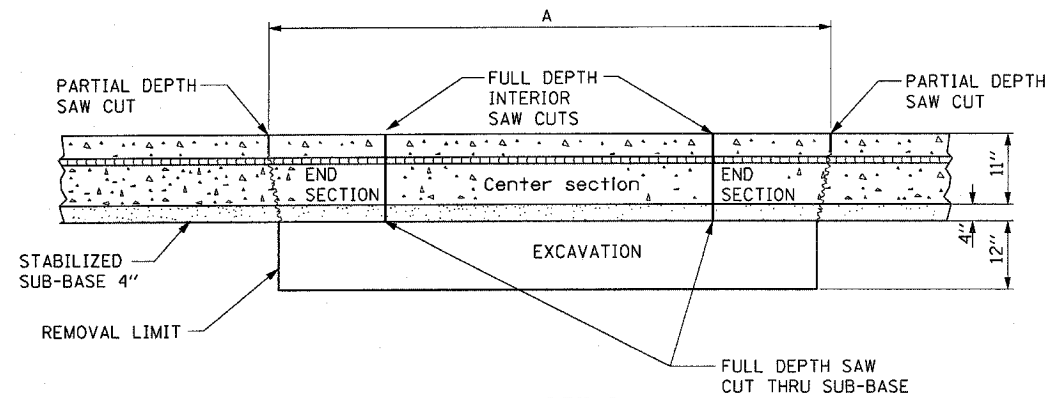




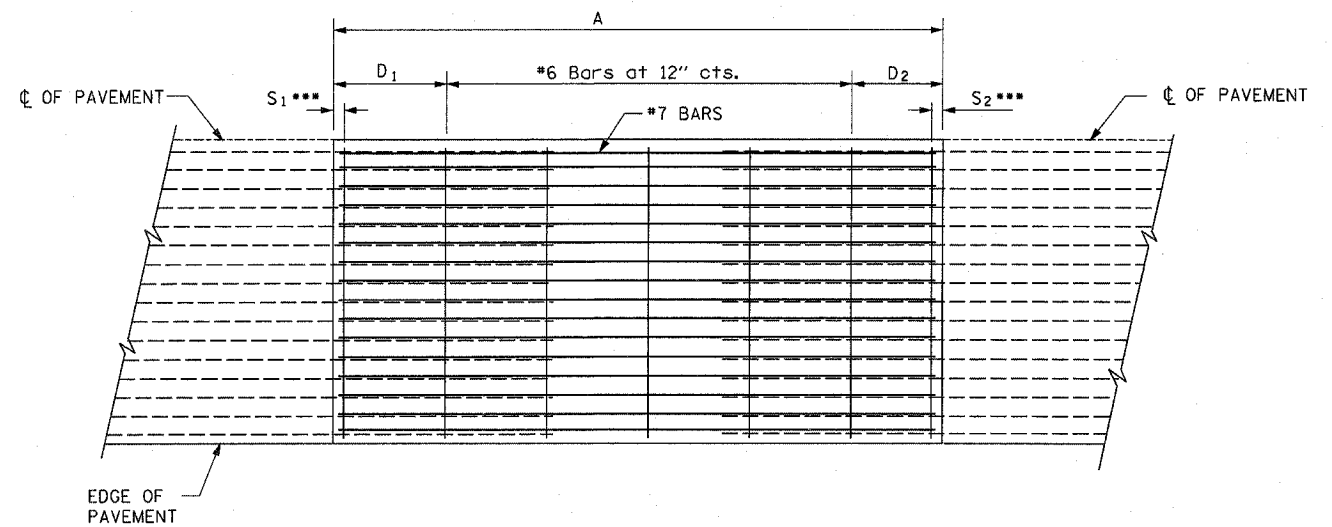
**ALTERNATE SAWING DETAIL**  
(PCC SHOULDER)



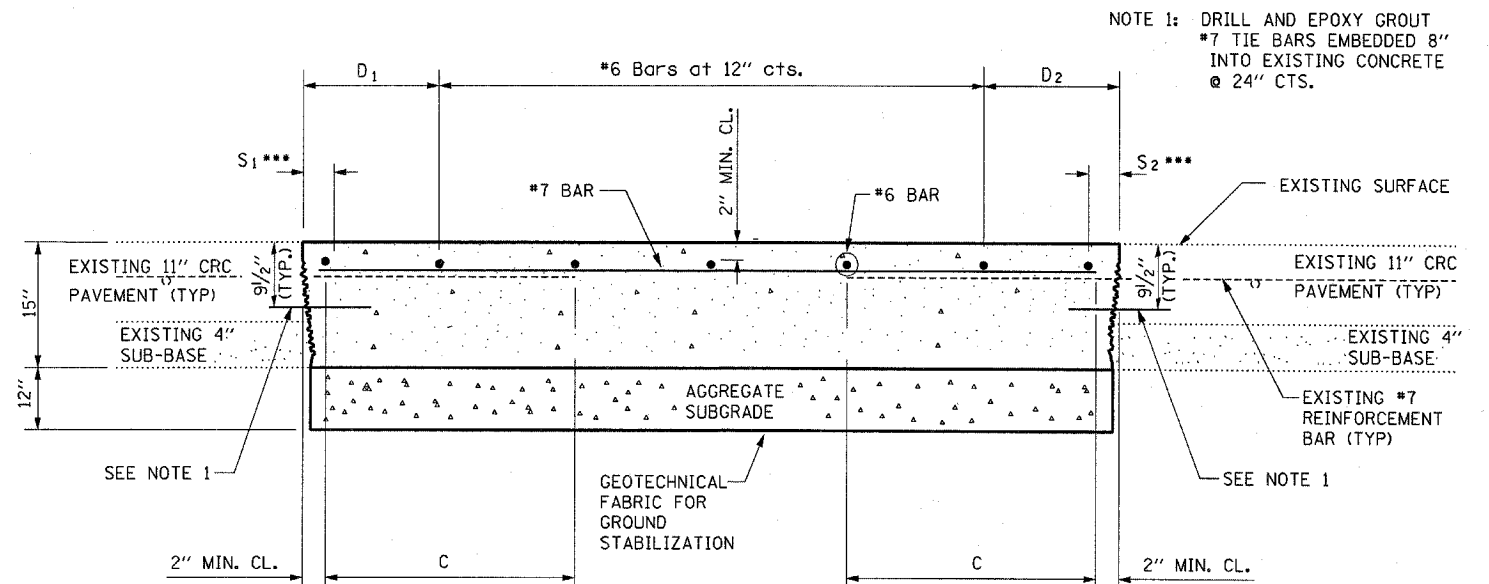
**PAVEMENT SAWING DETAIL**  
(PCC SHOULDER)



**REMOVAL DETAIL**



**PROPOSED PAVEMENT DETAIL**  
(AGAINST CONCRETE SHOULDER)



NOTE 1: DRILL AND EPOXY GROUT #7 TIE BARS EMBEDDED 8" INTO EXISTING CONCRETE @ 24" CTS.

**PROPOSED CLASS A PATCHING DETAIL**

EXISTING LONGITUDINAL REINFORCEMENT BARS	A (min.)	B (min.)	C (min.)
No. 7	6'-0"	24"	22"

**NOTES:**

- EVERY 3rd INTERSECTION MUST BE TIED
- LAP NEW REINFORCEMENT WITH EXISTING LONGITUDINAL REINFORCEMENT
- VARIABLES: WHERE S1 AND S2 ARE 2 1/2" MIN. AND 12" MAX. D1 = 2(S1) AND D2 = 2(S2)