

F.A.P. RTE.	SECTION	COUNTY	TOTAL SHEETS	SHEET NO.
68	(30,31,31X)RS-3	*	30	1
FED. ROAD DIST. NO.		ILLINOIS	CONTRACT NO. 66749	

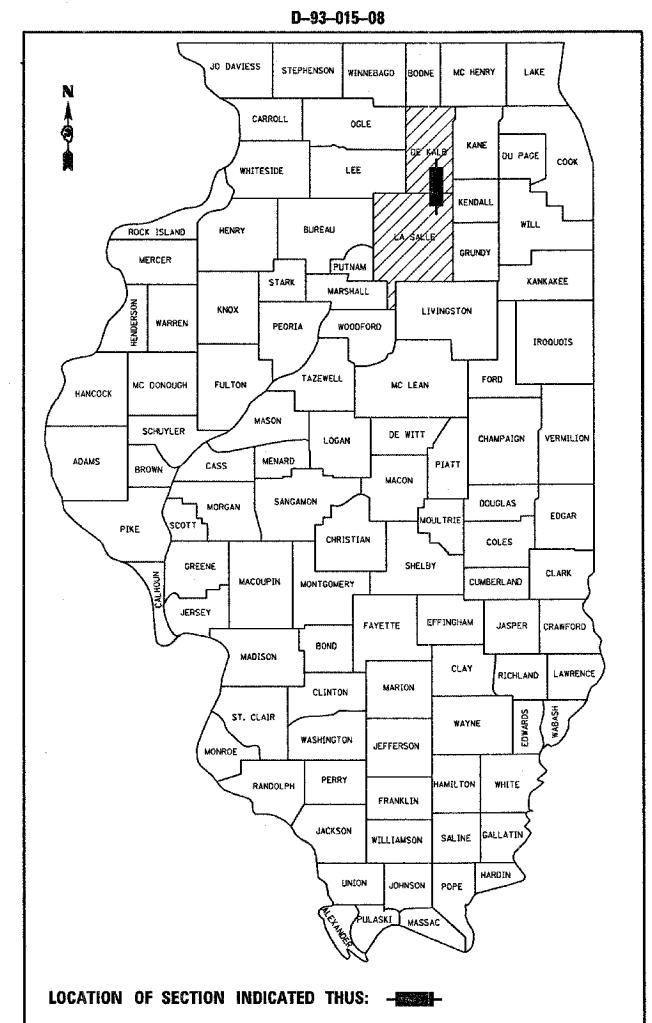
* LASALLE & DEKALB

STATE OF ILLINOIS
DEPARTMENT OF TRANSPORTATION
DIVISION OF HIGHWAYS

**PROPOSED
HIGHWAY PLANS**

FAP ROUTE 68 (ILLINOIS 23)
SECTION (30,31,31X)RS-3
PROJECT F-0068(103)
LASALLE & DEKALB COUNTIES

C - 93 - 028 - 08
3P MILLING & RESURFACING FROM
US RTE 34 TO US RTE 30



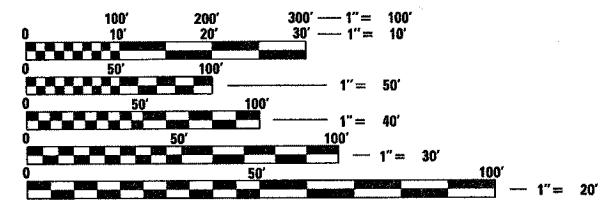
INDEX OF SHEETS

- 1 COVER SHEET
- 2 GENERAL NOTES
- 3 SUMMARY OF QUANTITIES
- 4 TYPICAL SECTIONS
- 5 - 7 SCHEDULE OF QUANTITIES
- 8 TIE POINTS TO SURVEY MARKERS
- 9 - 27 PLAN VIEWS
- 28 - 30 DETAILS

STANDARDS

- 000001-05 STANDARD SYMBOLS, ABBREVIATIONS AND PATTERNS
- 642001 SHOULDER RUMBLE STRIPS
- 667101 PERMANENT SURVEY MARKERS
- 701001-01 OFF-ROAD OPERATIONS 2L, 2W, MORE THAN 4.5 m (15') AWAY
- 701006-02 OFF-ROAD OPERATIONS 2L, 2W, 4.5 m (15') TO 600 mm (24") FROM PAVEMENT EDGE
- 701011-01 OFF-ROAD MOVING OPERATIONS 2L, 2W, DAY ONLY
- 701301-02 LANE CLOSURE, 2L, 2W, SHORT TIME OPERATIONS
- 701306-01 LANE CLOSURE, 2L, 2W, SLOW MOVING OPERATIONS DAY ONLY, FOR SPEEDS ≥ 45 MPH
- 701311-02 LANE CLOSURE, 2L, 2W, MOVING OPERATIONS - DAY ONLY
- 701901 TRAFFIC CONTROL DEVICES
- 781001-02 TYPICAL APPLICATIONS RAISED REFLECTIVE PAVEMENT MARKERS

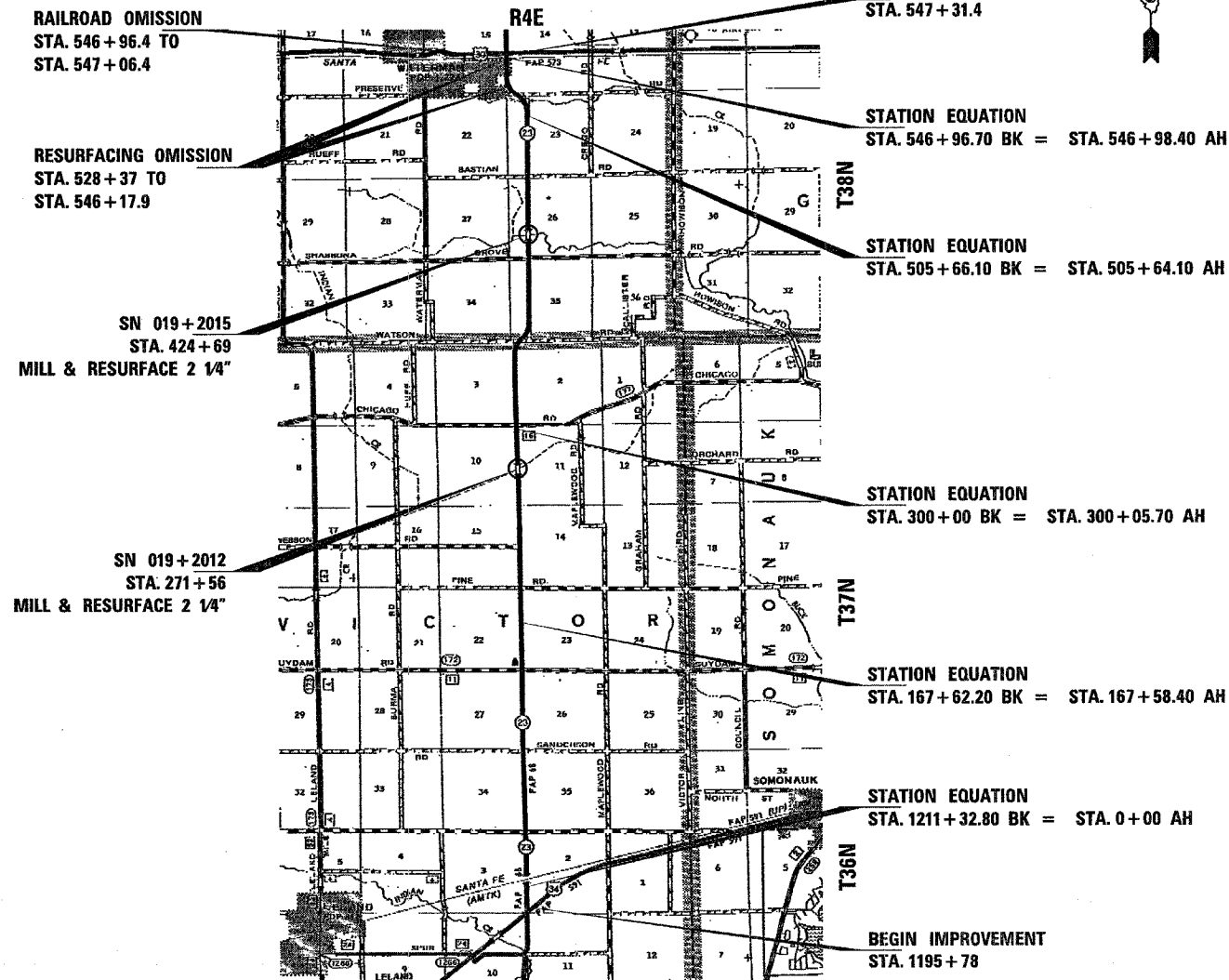
MICROFILMED _____
REEL NUMBER _____
AWARDED _____
RESIDENT ENGINEER _____
AS BUILT CHANGES WERE MADE
ON THE FOLLOWING SHEETS _____



FULL SIZE PLANS HAVE BEEN PREPARED USING STANDARD ENGINEERING SCALES. REDUCED SIZED PLANS WILL NOT CONFORM TO STANDARD SCALES. IN MAKING MEASUREMENTS ON REDUCED PLANS, THE ABOVE SCALES MAY BE USED.

J.U.L.I.E.
JOINT UTILITY LOCATION INFORMATION FOR EXCAVATION
1-800-892-0123
OR 811

PROJECT ENGINEER : D. BROVIAK
UNIT CHIEF : B. DUNCAN
DISTRICT 3 NO. (815) 434-6131
CONTRACT NO. 66749



GROSS LENGTH = 56286.3 FT. = 10.66 MI.
NET LENGTH = 56276.3 FT. = 10.66 MI.

FUNCTION CLASSIFICATION
RURAL MINOR ARTERIAL
2008 ADT = 2300
P.V. = 80.0% S.U. = 6.7% M.U. = 13.3%

STATE OF ILLINOIS
DEPARTMENT OF TRANSPORTATION
DIVISION OF HIGHWAYS

SUBMITTED March 26 20 08

Harry R. ...
DEPUTY DIRECTOR OF HIGHWAYS, REGION ENGINEER

May 9, 20 08
Eric E. Harsh
ENGINEER OF DESIGN AND ENVIRONMENT

May 9, 20 08
Christine M. Reed
DIRECTOR OF HIGHWAYS, CHIEF ENGINEER

**PRINTED BY THE AUTHORITY
OF THE STATE OF ILLINOIS**

PLOT DATE = Mar 26, 2008 - 09:37:18 AM
FILE NAME = c:\projects\ed01508\cover-sh.dgn
PLOT SCALE = 50,0000 / IN.
USER NAME = duncanbd