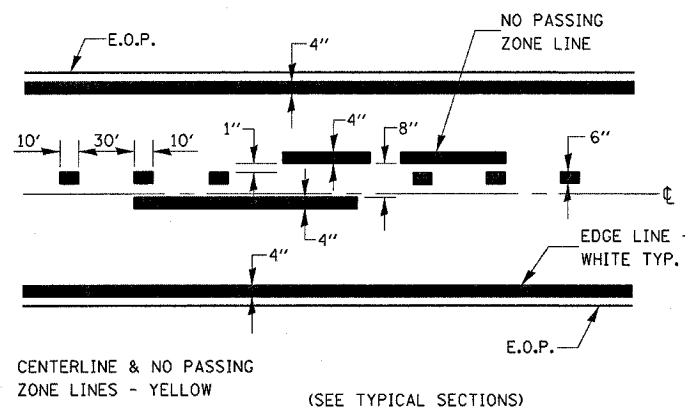


* MINIMUM DISTANCE
400' FOR 55 MPH
250' FOR 45 MPH
100' FOR 35 MPH OR LESS

NOTES:
THE TRANSVERSE SPREAD OF THE "X"
MAY VARY ACCORDING TO LANE WIDTH.

ON MULTI-LANE ROADS, THE STOP LINES
SHALL EXTEND ACROSS ALL APPROACH
LANES AND SEPARATE RXR SYMBOLS SHALL
BE PLACED ADJACENT TO EACH OTHER
IN EACH LANE.

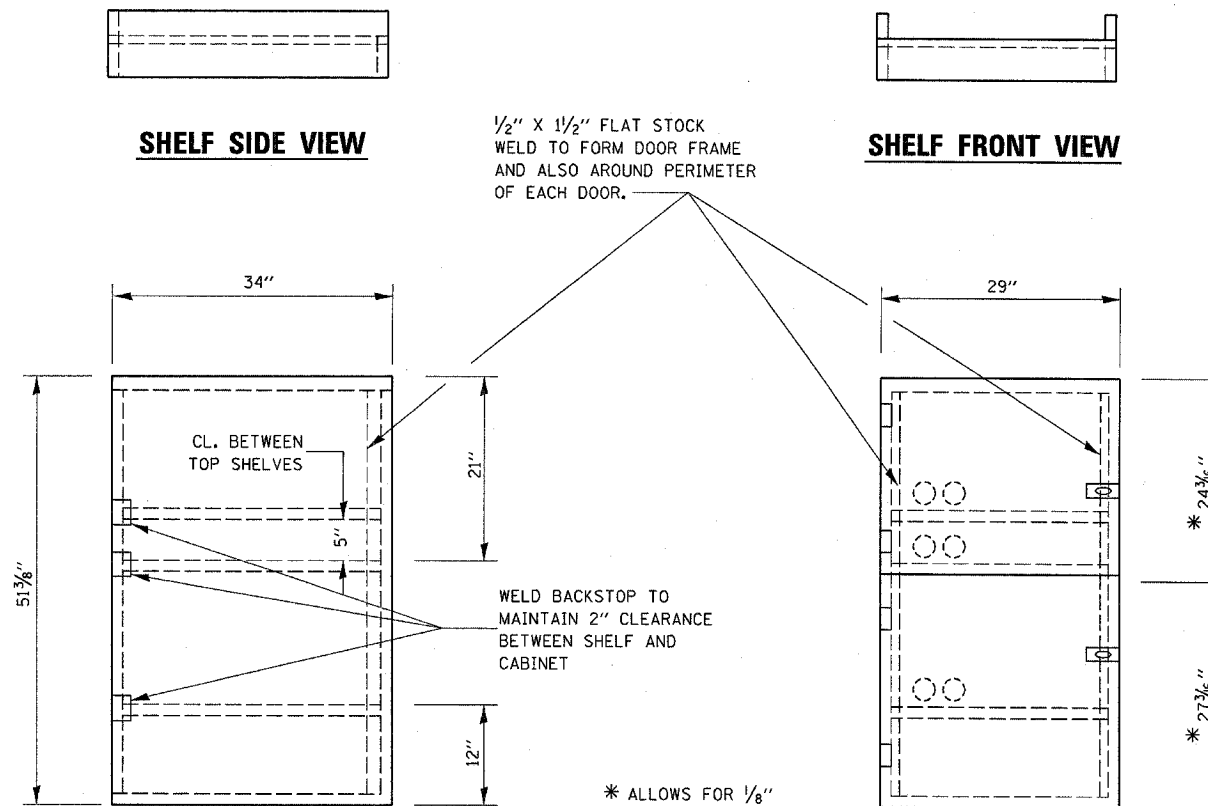
PAVEMENT MARKINGS AT RAILROAD-HIGHWAY GRADE CROSSING



CENTERLINE & NO PASSING
ZONE LINES - YELLOW

(SEE TYPICAL SECTIONS)

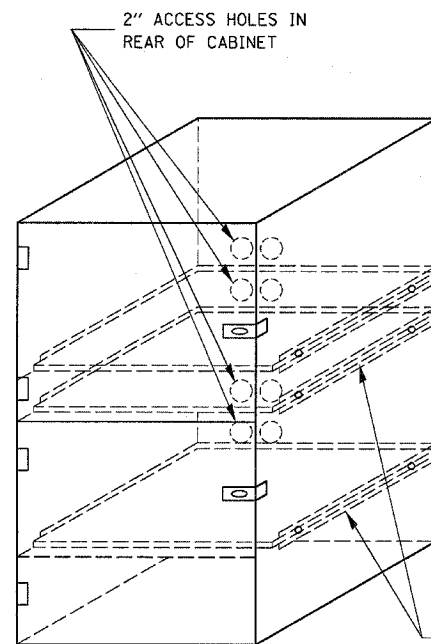
PAVEMENT MARKING



SIDE VIEW

FRONT VIEW

* ALLOWS FOR 1/8" CLEARANCE AT TOP AND BOTTOM OF CABINET AND BETWEEN DOORS.



FLAT STOCK DIMENSIONS VARY
DEPENDING ON TYPE OF
ROLLER ASSEMBLY

NOTES:

1. USE 16 GAUGE STEEL FOR CABINET.
2. THE TOP SHELF SHALL SLIDE IN OR OUT WITH THE TOP DOOR OPEN.
3. ALL HINGES AND HASPS WILL BE WELDED TO THE CABINET.
4. ALL EDGES SHALL BE GROUND SMOOTH.
5. TWO (2" DIA.) ACCESS HOLES WILL BE REQUIRED FOR EACH SHELF.
6. CABINET SHALL BE PAINTED WITH TWO COATS OF FLAT PAINT.
7. 2 EACH MATCHING KEY PADLOCKS, WITH 3 KEYS PROVIDED, MASTER MODEL 3 T OR EQUIVALENT.
8. 4 EACH PLAIN STEEL, NON-REMOVABLE PIN, NO HOLE 4" x 4" SQUARE CORNER HINGES TO BE WELDED ON.
9. 2 EACH EXTRA HEAVY, PLAIN STEEL, FIXED STAPLE, NO HOLE, 7/4" HASPS TO BE WELDED ON.

LOCKABLE COMPUTER CABINET

FILE NAME = ca:\proj\jso\ca\01500\details.dgn	USER NAME = duncenbd	DESIGNED -	REVISED -
		DRAWN -	REVISED -
	PLOT SCALE = 50.0000' / IN.	CHECKED -	REVISED -
	PLOT DATE = Mar 21, 2008 - 01:31:20 PM	DATE -	REVISED -

STATE OF ILLINOIS
DEPARTMENT OF TRANSPORTATION

DETAILS

SCALE: SHEET NO. OF SHEETS STA. TO STA.

*LASALLE & DEKALB				
F.A.P. RTE.	SECTION	COUNTY	TOTAL SHEETS	SHEET NO.
68	(30,31,31X)RS-3	*	30	29
FED. ROAD DIST. NO.			ILLINOIS FED. AID PROJECT	
			CONTRACT NO. 66749	