

F.A.P. RTE.	SECTION	COUNTY	TOTAL SHEETS	SHEET NO.
316	(116)RS-6	BUREAU	8	1
FED. ROAD DIST. NO.	ILLINOIS	CONTRACT NO. 66765		

STATE OF ILLINOIS
DEPARTMENT OF TRANSPORTATION
DIVISION OF HIGHWAYS
**PROPOSED
HIGHWAY PLANS**

FAP 316 ROUTE IL 26
SECTION (116)RS-6
PROJECT F-0316(034)
BUREAU COUNTY

C - 93 - 058 - 08

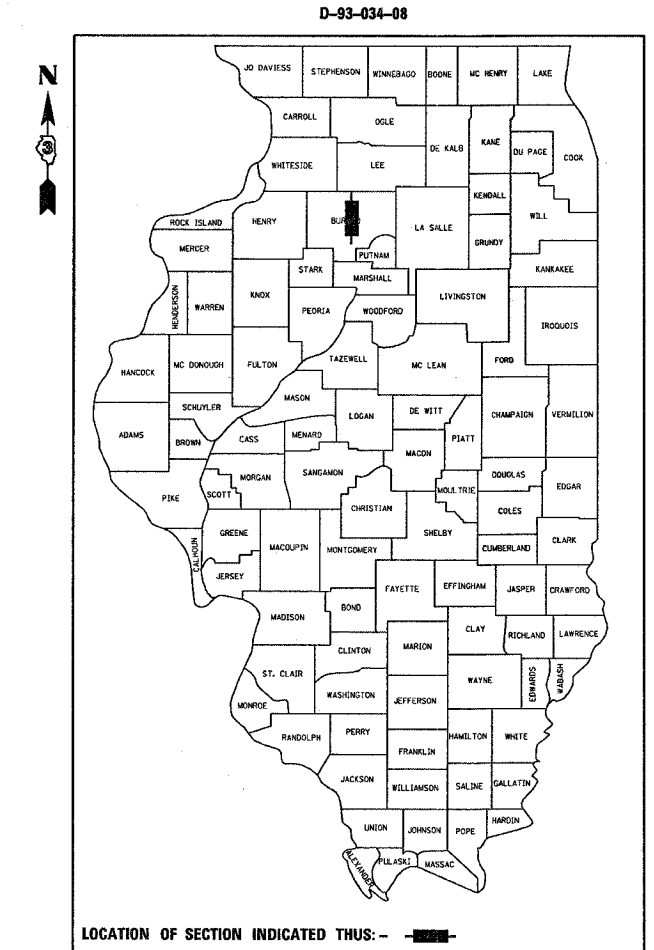
SMART RESURFACING FROM SOUTH OF
RED COVERED BRIDGE ROAD (CR 1990 E)
TO NORTH OF I-80

INDEX OF SHEETS

- 1 COVER SHEET
- 2 GENERAL NOTES
- 3 SUMMARY OF QUANTITIES
- 4 TYPICAL SECTIONS
- 5 SCHEDULES
- 6 TIE POINTS
- 7 PROJECT LAYOUT
- 8 MISC DETAILS

STANDARDS

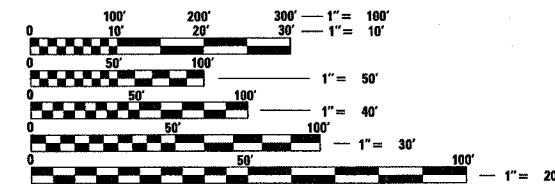
- | | |
|-----------|--|
| 000001-05 | STANDARD SYMBOLS, ABBREVIATIONS AND PATTERNS |
| 701301-02 | LANE CLOSURE, 2L, 2W, SHORT TIME OPERATIONS |
| 701306-01 | LANE CLOSURE, 2L, 2W, SLOW MOVING OPERATIONS DAY ONLY, FOR SPEEDS ≥ 45 MPH |
| 701311-02 | LANE CLOSURE, 2L, 2W, MOVING OPERATIONS - DAY ONLY |
| 701326-02 | LANE CLOSURE, 2L, 2W, PAVEMENT WIDENING, FOR SPEEDS ≥ 45 MPH |
| 701901 | TRAFFIC CONTROL DEVICES |
| 780001-01 | TYPICAL PAVEMENT MARKINGS |
| 781001-02 | TYPICAL APPLICATIONS RAISED REFLECTIVE PAVEMENT MARKERS |



OTHER PRINCIPAL ARTERIAL

2008 ADT = 7,300
P.V. = 79.2% S.U. = 13.2% M.U. = 7.6%

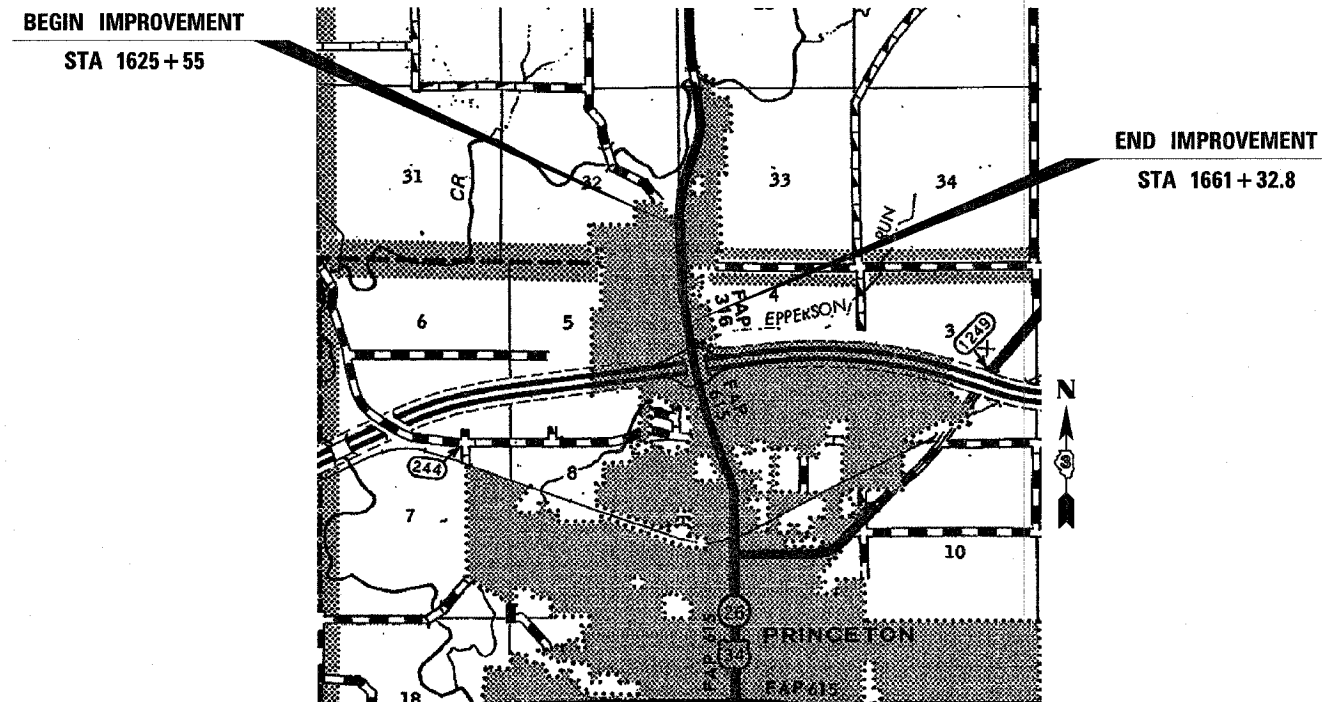
MICROFILMED _____
REEL NUMBER _____
AWARDED _____
RESIDENT ENGINEER _____
AS BUILT CHANGES WERE MADE
ON THE FOLLOWING SHEETS _____



FULL SIZE PLANS HAVE BEEN PREPARED USING STANDARD ENGINEERING SCALES. REDUCED SIZED PLANS WILL NOT CONFORM TO STANDARD SCALES. IN MAKING MEASUREMENTS ON REDUCED PLANS, THE ABOVE SCALES MAY BE USED.

J.U.L.I.E.
JOINT UTILITY LOCATION INFORMATION FOR EXCAVATION
1-800-892-0123
OR 811

PROJECT ENGINEER: JOE KANNEL
PROJECT MANAGER: MICHELE LINDEMANN
DISTRICT 3 NO. (815) 434-6131
CONTRACT NO. 66765



GROSS LENGTH = 3577.8 FT. = .677 MI.
NET LENGTH = 3577.8 FT. = .677 MI.

PLOT DATE = Mar 13, 2008 - 01:25:12 PM
FILE NAME = c:\projects\ved03406\vrshd.dgn
PLOT SCALE = 50.0000 / IN.
USER NAME = carpenterd

STATE OF ILLINOIS
DEPARTMENT OF TRANSPORTATION
DIVISION OF HIGHWAYS

SUBMITTED _____ 20 _____

George Egan
DEPUTY DIRECTOR OF HIGHWAYS, REGION ENGINEER
May 9, 2008

Eric E. Harms
SUPERVISOR ENGINEER OF DESIGN AND ENVIRONMENT
May 9, 2008

Christine M. Reed
DIRECTOR OF HIGHWAYS, CHIEF ENGINEER

PRINTED BY THE AUTHORITY
OF THE STATE OF ILLINOIS

GENERAL NOTES

THE THICKNESS OF HMA SHOWN ON THE PLANS IS THE NOMINAL THICKNESS. DEVIATIONS FROM THE NOMINAL THICKNESS WILL BE PERMITTED WHEN SUCH DEVIATIONS OCCUR DUE TO IRREGULARITIES IN THE EXISTING SURFACE OR BASE ON WHICH THE HMA IS PLACED.

THE ENGINEER WILL BE THE SOLE JUDGE CONCERNING CURING TIME FOR THE VARIOUS HMA LIFTS.

ANY REFERENCE TO A STANDARD IN THESE PLANS SHALL BE INTERPRETED TO MEAN THE EDITION AS INDICATED BY THE SUBNUMBER SHOWN IN THE LIST OF STANDARDS OR THE COPY INCLUDED IN THESE PLANS.

THE FOLLOWING RATES OF APPLICATION HAVE BEEN USED IN CALCULATING PLAN QUANTITIES:

GRANULAR MATERIALS	2.05	TONS / CU YD
BITUMINOUS MAT PRIME COAT	0.08	GAL / SQ YD
AGGREGATE PRIME COAT	0.002	TONS / SQ YD
HMA RESURFACING	112	LBS / SQ YD / IN
SHORT TERM PAVEMENT MARKING	10	FT /100 FT OF APPLICATION
MIX FOR CRACKS, JTS & FLGWYS	0.0003	TONS / SQ YD
LEVEL BINDER (HAND METHOD)	0.0005	TONS / SQ YD

THE CONTRACTOR SHALL CONTACT JULIE AT LEAST 48 HOURS PRIOR TO EXCAVATION TO DETERMINE WHICH UTILITIES ARE IN THE AREA.

STATE OF ILLINOIS
DEPARTMENT OF TRANSPORTATION
DISTRICT THREE

PREPARED BY: *Paul An*
DISTRICT STUDIES & PLANS ENGINEER

DATE: 3-17-08

EXAMINED BY: *Hubert*
DISTRICT CONSTRUCTION ENGINEER

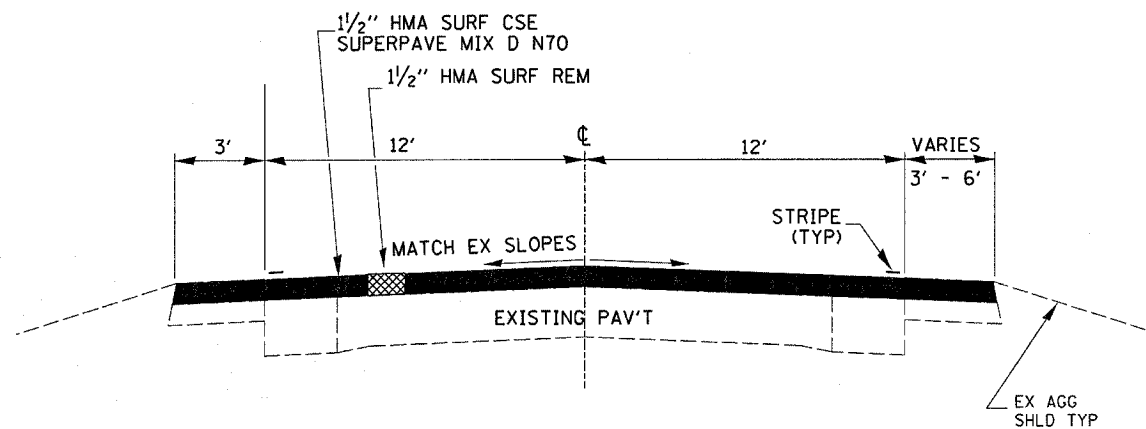
J. J. ...
DISTRICT MATERIALS ENGINEER

James A. ...
DISTRICT OPERATIONS ENGINEER

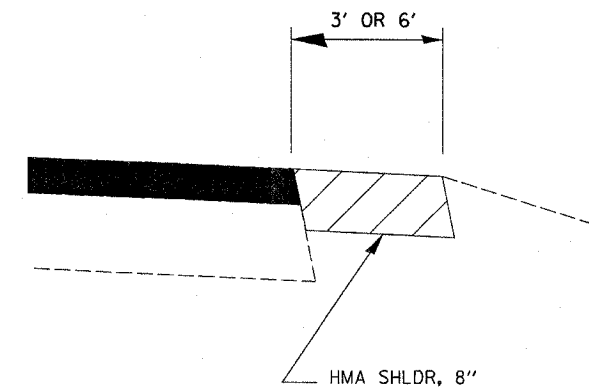
FILE NAME = c:\projects\ed03408\cvrshd.dgn	USER NAME = carpenterd.j	DESIGNED - ---	REVISED - ---	STATE OF ILLINOIS DEPARTMENT OF TRANSPORTATION	GENERAL NOTES	F.A.P. RTE. 316	SECTION (116)RS-6	COUNTY BUREAU	TOTAL SHEETS 8	SHEET NO. 2	
PLOT SCALE = 50.0000' / IN.	CHECKED - ---	REVISED - ---	SCALE: _____			SHEET NO. _____ OF _____ SHEETS	STA. _____ TO STA. _____	FED. ROAD DIST. NO. _____	ILLINOIS FED. AID PROJECT	66765	
PLOT DATE = Mar 13, 2008 - 01:25:33 PM	DATE - _____	REVISED - ---									

SUMMARY OF QUANTITIES			80% FED 20% STATE
CODE	CONSTRUCTION CODE TYPE: ITEM		1000 TOTAL
NO.		UNIT	QUANTITY
40600100	BITUMINOUS MATERIALS (PRIME COAT)	GALLON	970
40600300	AGGREGATE (PRIME COAT)	TON	24
40600400	MIXTURE FOR CRACKS, JOINTS, AND FLANGEWAYS	TON	4
40600535	LEVELING BINDER (HAND METHOD), N70	TON	6
40600990	TEMPORARY RAMP	SQ YD	151
40603340	HOT-MIX ASPHALT SURFACE COURSE, MIX "D", N70	TON	1019
44000155	HOT-MIX ASPHALT SURFACE REMOVAL, 1 1/2"	SQ YD	12126
44004250	PAVED SHOULDER REMOVAL	SQ YD	573
48101200	AGGREGATE SHOULDERS, TYPE B	TON	136
48203029	HOT-MIX ASPHALT SHOULDERS, 8"	SQ YD	573
67100100	MOBILIZATION	L SUM	1
70100460	TRAFFIC CONTROL AND PROTECTION, STANDARD 701306	L SUM	1
70100500	TRAFFIC CONTROL AND PROTECTION, STANDARD 701326	L SUM	1
70300100	SHORT-TERM PAVEMENT MARKING	FOOT	716
70301000	WORK ZONE PAVEMENT MARKING REMOVAL	SQ FT	119
* 78000200	THERMOPLASTIC PAVEMENT MARKING - LINE 4"	FOOT	7539
* 78000400	THERMOPLASTIC PAVEMENT MARKING - LINE 6"	FOOT	894
* 78000500	THERMOPLASTIC PAVEMENT MARKING - LINE 8"	FOOT	180
* 78100100	RAISED REFLECTIVE PAVEMENT MARKER	EACH	51

* SPECIALTY ITEMS



TYPICAL SECTION
STA 1625+55 TO STA 1661+32.8



SHOULDER DETAIL

MIX DESIGN						
MIX	PG GRADE	MAX % RAP ALLOWABLE **	DESIGN AIR VOIDS	MIX COMPOSITION	FRICTION AGG	DENSITY TEST METHOD
HMA SURFACE	PG64-22	10%	4.0% @N70	IL 12.5 OR IL 9.5	MIXTURE D	CORES/NUCLEAR
HMA SHOULDERS (BOTTOM LIFTS)	PG58-22	25%	3.0% @N50***	IL 19.0		NUCLEAR*
HMA SHOULDERS (TOP LIFT)	PG58-22	15%	4.0% @N50	IL 12.5 OR IL 9.5	MIXTURE C	NUCLEAR

- * MATERIAL SHALL BE COMPACTED TO 93.0-97.4 PERCENT OF THE MAXIUM THEORETICAL DENSITY, EXCEPT THAT WHEN PLACED AS FIRST LIFT ON AN UNIMPROVED SUBGRADE THE MINIMUM PERCENT COMPACTION SHALL BE 92.0 PERCENT. THE MAXIMUM THEORETICAL DENSITY SHALL BE DETERMINED FROM THE MOVING AVERAGE AS SPECIFIED IN THE QC/QA SPECIFICATION.
- ** IF THE RAP PERCENTAGE IS DIFFERENT THAN LISTED ABOVE, THE PG GRADE MAY NEED TO BE ADJUSTED. THIS WILL BE DETERMINED BY THE ENGINEER
- *** ADJUSTMENTS TO THE MIX DESIGN TO ACHIEVE 3.0% VOIDS SHALL BE MADE BY INCREASING THE ASPHALT CONTENT OF THE MIX.

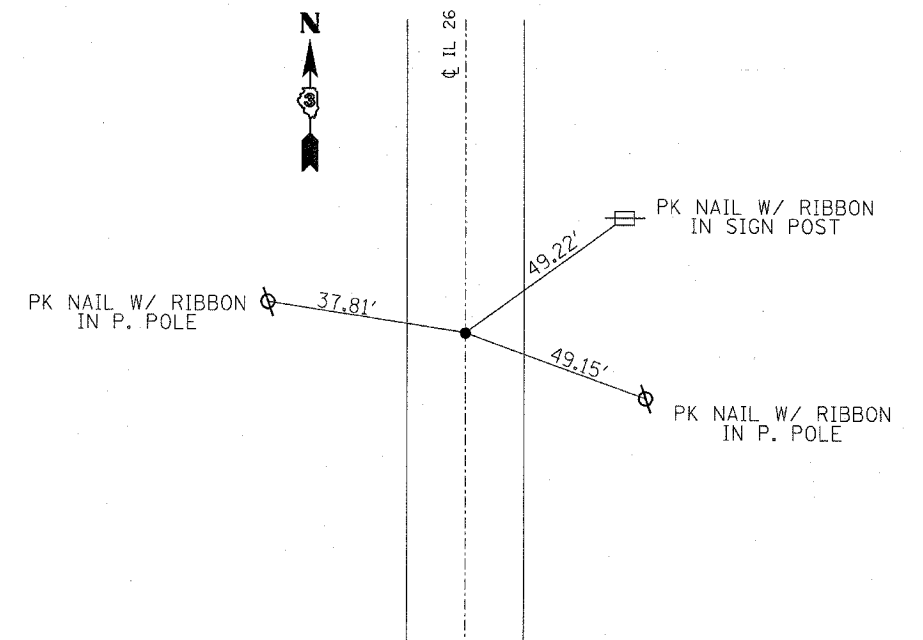
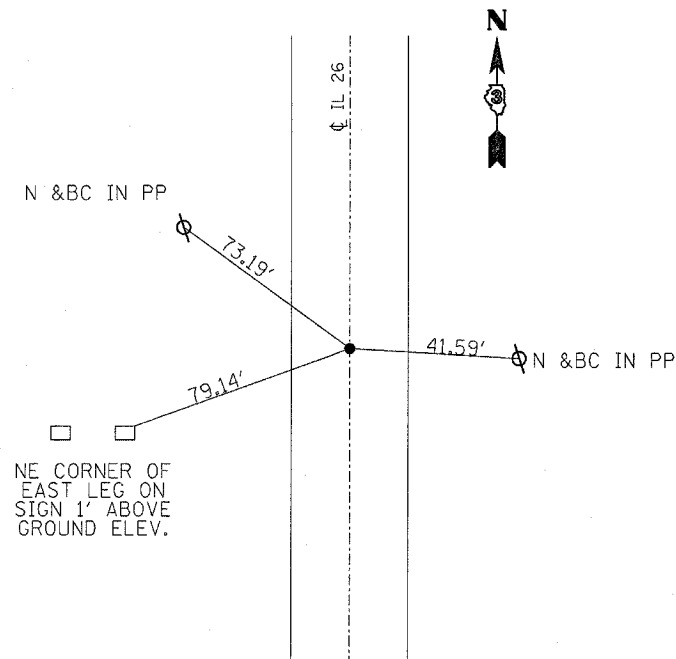
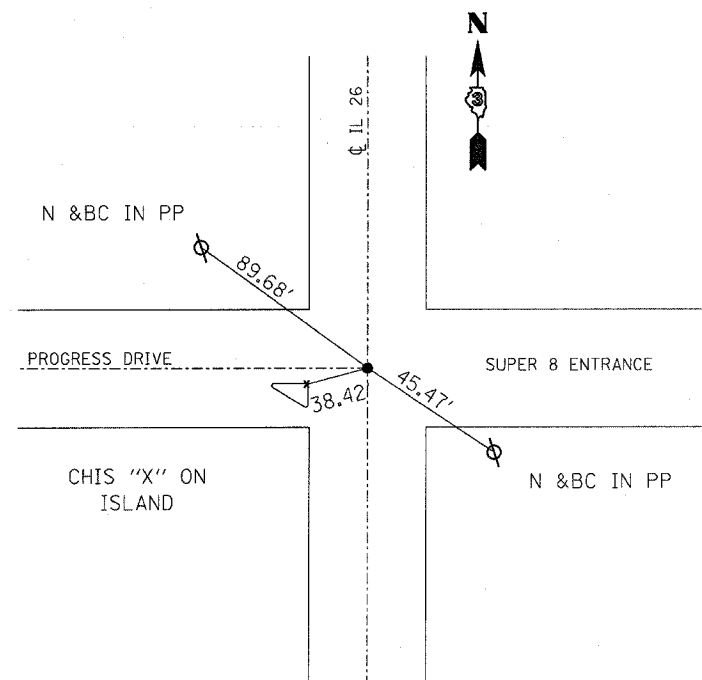
RESURFACING SCHEDULE									
LOCATION	LENGTH	HMA SURF REM 1 1/2"	HMA SURF CSE	TEMP RAMP	BIT MAT (PR CT)	AGG (PR CT)	MIX FOR CRACKS, JTS & FLGWYS	LEVEL BINDER (H.M.)	AGG SHLDR
STA TO STA		SQ YD	TON	SQ YD	GAL	TON	TON	TON	TON
1625+55 TO 1661+32.8	3577.8	12126	1019	151	970	24	4	6	136
TOTAL	3577.8	12126	1019	151	970	24	4	6	136

NOTE: AGG SHOULDER QUANTITY HAS BEEN INCLUDED FOR USE IN AREAS WITH LOW EXISTING SHOULDER

SHOULDER SCHEDULE				
LOCATION	WIDTH	LENGTH	PAVED SHLDR REM	HMA SHLDR 8"
STA TO STA			SQ YD	SQ YD
1629+00 TO 1632+10 LT	3'	310	103	103
1625+55 RT TO 1632+60 RT	6'	705	470	470
TOTAL		1015	573	573

THERMOPLASTIC PAVEMENT MARKING SCHEDULE						
LOCATION	LENGTH	THERMOPLASTIC PAVEMENT MARKING 4 INCH		THERMO PVMT MARK 6 INCH	THERMO PVMT MARK 8 INCH	RAISED REFLECT PVMT MARKER
		WHITE	YELLOW	YELLOW	WHITE	EACH
		FOOT	FOOT	FOOT	FOOT	
1625+55 TO 1661+32.8	3577.8	7156	383	894	180	51
SUBTOTAL		7156	383	894	180	51
TOTAL			7539	894	180	51

SHORT-TERM PAVEMENT MARKING SCHEDULE			
LOCATION	LENGTH	SHORT-TERM PAVEMENT MARKING	WORK ZONE PVMT MARKING REMOVAL
		FOOT	SQ FT
		1625+55 TO 1661+32.8	3577.8
TOTAL		716	119

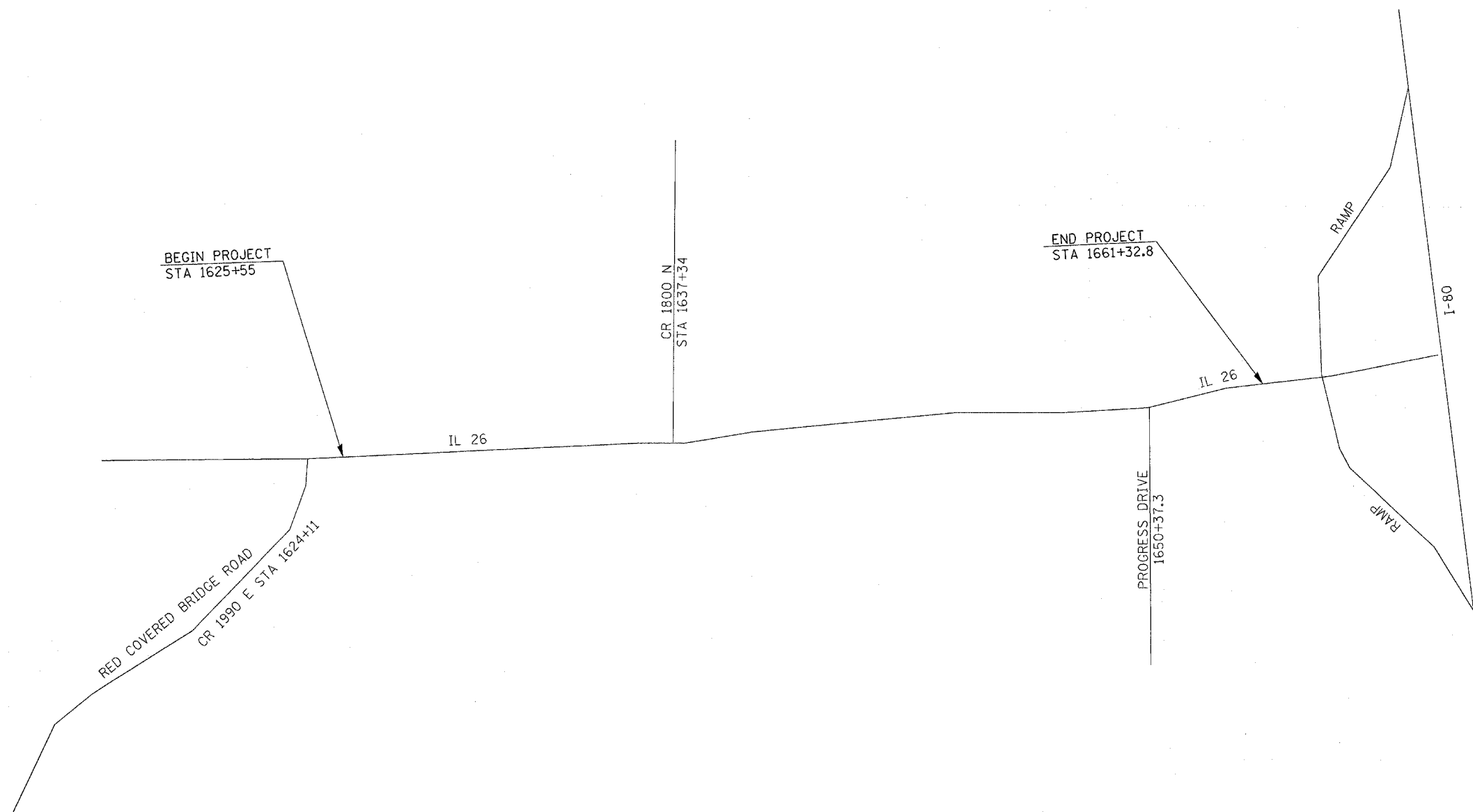


IL 26 P.C OR P.T.

IL 26 ABOUT 300' S OF
W. SIDE RD 1990 E (P.O.T.)

NOTE: THE ENGINEER SHALL REPLACE ALL NAILS WITH SURVEY NAILS. THESE SHOULD BE OBTAINED FROM BOB POUNDSTONE IN THE DISTRICT OFFICE.

FILE NAME = e:\projects\ed03488\detail.s.dgn	USER NAME = carpenterdJ	DESIGNED - ---	REVISED - ---	STATE OF ILLINOIS DEPARTMENT OF TRANSPORTATION	TIE POINTS				F.A.P. RTE. 316	SECTION (116)RS-6	COUNTY BUREAU	TOTAL SHEETS 8	SHEET NO. 6
	PLOT SCALE = 50.0000' / IN.	DRAWN - ---	REVISED - ---		SCALE: -----	SHEET NO. --- OF --- SHEETS	STA. ----- TO STA. -----	CONTRACT NO. 66765		FED. ROAD DIST. NO. --- ILLINOIS FED. AID PROJECT			
	PLOT DATE = Mar 13, 2008 - 01:26:29 PM	CHECKED - ---	REVISED - ---										



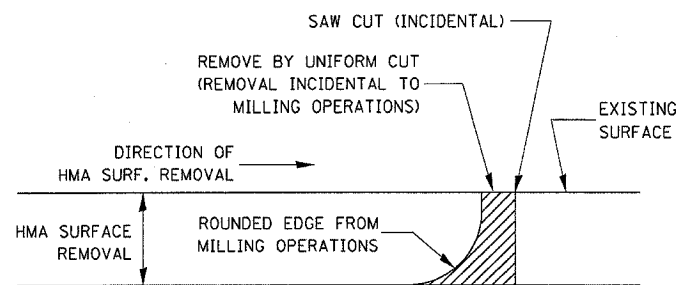
FILE NAME = c:\projects\ed03406\details.dgn	USER NAME = carpenterdj	DESIGNED - ---	REVISED - ---
		DRAWN - ---	REVISED - ---
	PLOT SCALE = 50.0000' / IN.	CHECKED - ---	REVISED - ---
	PLOT DATE = Mar 13, 2008 - 01:26:38 PM	DATE - -----	REVISED - ---

**STATE OF ILLINOIS
DEPARTMENT OF TRANSPORTATION**

PROJECT LAYOUT

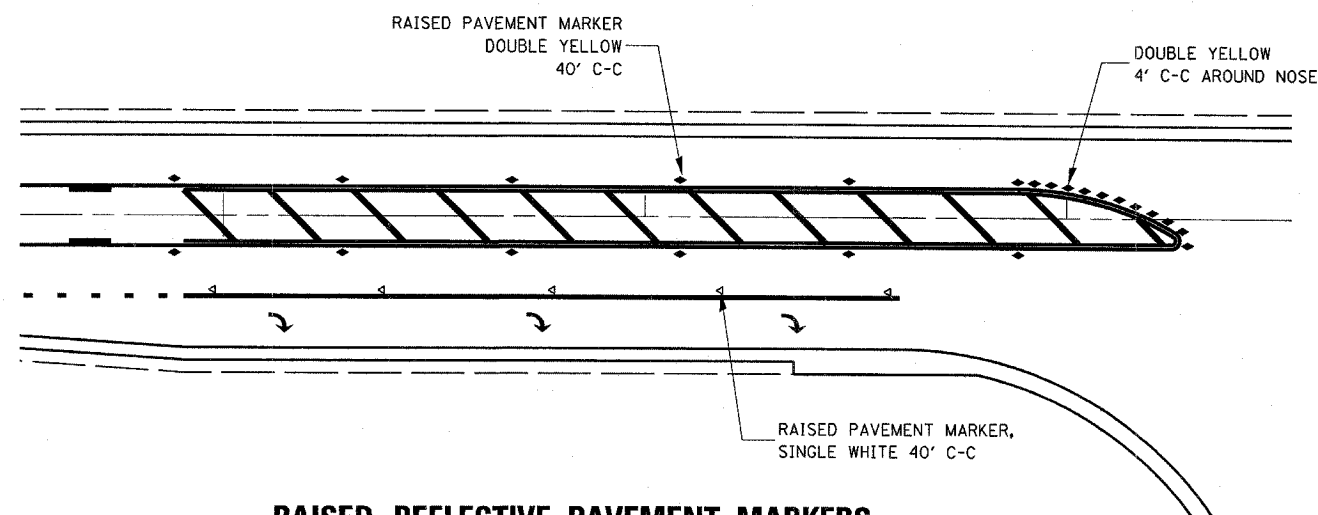
SCALE: _____ SHEET NO. ___ OF ___ SHEETS STA. _____ TO STA. _____

F.A.P. RTE. 316	SECTION (116)RS-6	COUNTY BUREAU	TOTAL SHEETS 8	SHEET NO. 7
FED. ROAD DIST. NO. _____ ILLINOIS			FED. AID PROJECT	
CONTRACT NO. 66765				



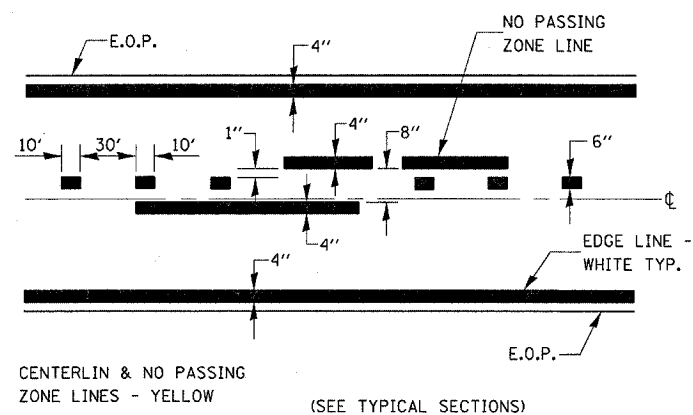
NOTE:
 WHEN MILLING OPERATIONS PRODUCE A ROUNDED EDGE,
 THEN A SAW CUT SHALL BE USED TO MANUFACTURE
 A PERPENDICULAR EDGE AS SHOWN IN THE DETAIL.
 THE ENGINEER SHALL BE THE SOLE JUDGE
 CONCERNING THE USE OF THIS DETAIL

HMA DETAIL AT BUTT JOINTS



RAISED REFLECTIVE PAVEMENT MARKERS @ RIGHT TURN LANE

781-1



PAVEMENT MARKING

FILE NAME = c:\projects\ed03488\details.dgn	USER NAME = carpenterdj	DESIGNED - ---	REVISED - ---	STATE OF ILLINOIS DEPARTMENT OF TRANSPORTATION	DETAILS	F.A.P. RTE.	SECTION	COUNTY	TOTAL SHEETS	SHEET NO.
	PLOT SCALE = 50.0000' / IN.	CHECKED - ---	REVISED - ---			316	(116)RS-6	BUREAU	8	8
PLOT DATE = Mar 13, 2008 - 01:26:44 PM	DATE - ---	REVISED - ---	REVISED - ---	SCALE: -----	SHEET NO. ___ OF ___ SHEETS	STA. ----- TO STA. -----	CONTRACT NO. 66765			
						FED. ROAD DIST. NO. - ILLINOIS FED. AID PROJECT				