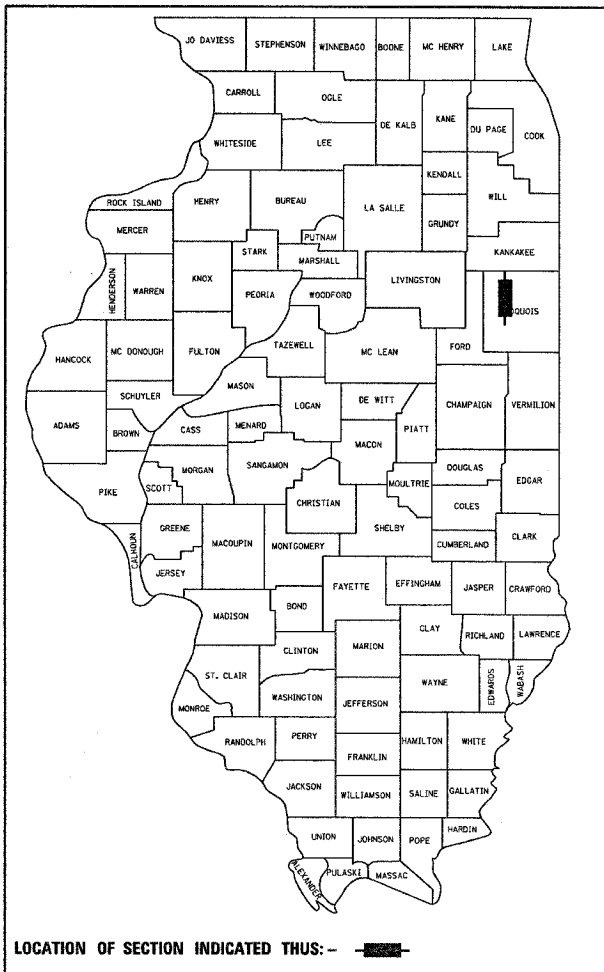


F.A.S. RTE.	SECTION	COUNTY	TOTAL SHEETS	SHEET NO.
1324	(38)RS-5	IROQUOIS	7	1
FED. ROAD DIST. NO.	ILLINOIS	CONTRACT NO. 66777		

C-93-073-08
D-93-046-08



LOCATION OF SECTION INDICATED THUS: - [black box] -

RURAL MAJOR COLLECTOR (STA 417+71 TO 427+06)
2008 ADT = 4,550
P.V. = 95.7% S.U. = 2.6% M.U. = 1.7%

RURAL MAJOR COLLECTOR (STA 427+06 TO 633+78)
2008 ADT = 2,550
P.V. = 91.5% S.U. = 6.8% M.U. = 1.7%

STATE OF ILLINOIS
DEPARTMENT OF TRANSPORTATION
DIVISION OF HIGHWAYS

SUBMITTED _____ 20 _____

Deputy Director
DEPUTY DIRECTOR OF HIGHWAYS, REGION ENGINEER

May 9, 2008
Eric E. [Signature]
ENGINEER OF DESIGN AND ENVIRONMENT

May 9, 2008
Christine M. [Signature]
DIRECTOR OF HIGHWAYS, CHIEF ENGINEER

PRINTED BY THE AUTHORITY OF THE STATE OF ILLINOIS

STATE OF ILLINOIS
DEPARTMENT OF TRANSPORTATION
DIVISION OF HIGHWAYS

**PROPOSED
HIGHWAY PLANS**

FAS 1324 (OLD US 45)
SECTION (38)RS-5

(THE FIRST PA
PAGE COMING)
IROQUOIS COUNTY
C - 93 - 073 - 08
CAPE SEAL RESURFACING FROM
CHEBANSE TO CLIFTON

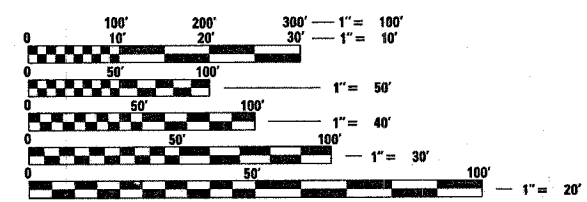
INDEX OF SHEETS

- 1 COVER SHEET
- 2 GENERAL NOTES
- 3 SUMMARY OF QUANTITIES
- 4 TYPICAL SECTIONS
- 5 SCHEDULES
- 6 PROJECT LAYOUT
- 7 MISC DETAILS

STANDARDS

- 000001-05 STANDARD SYMBOLS, ABBREVIATIONS AND PATTERNS
- 667101 PERMANENT SURVEY MARKERS
- 701301-02 LANE CLOSURE, 2L, 2W, SHORT TIME OPERATIONS
- 701306-01 LANE CLOSURE, 2L, 2W, SLOW MOVING OPERATIONS DAY ONLY, FOR SPEEDS ≥ 45 MPH
- 701311-02 LANE CLOSURE, 2L, 2W, MOVING OPERATIONS - DAY ONLY
- 701901 TRAFFIC CONTROL DEVICES
- 780001-01 TYPICAL PAVEMENT MARKINGS
- 781001-02 TYPICAL APPLICATIONS RAISED REFLECTIVE PAVEMENT MARKERS

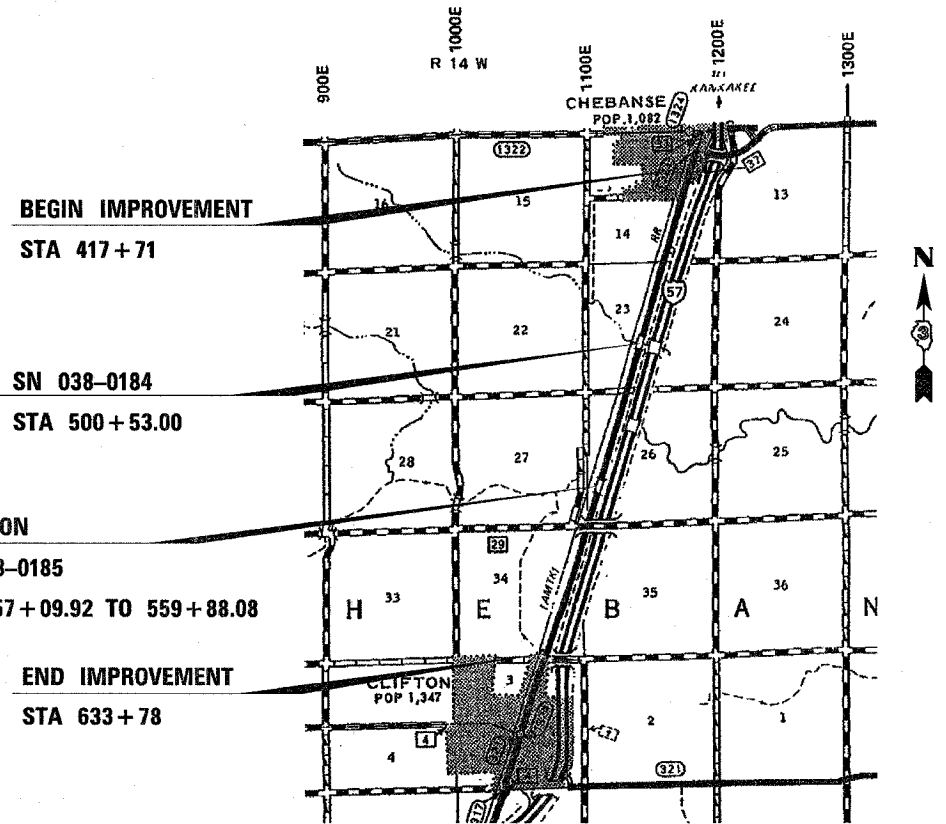
MICROFILMED _____
REEL NUMBER _____
AWARDED _____
RESIDENT ENGINEER _____
AS BUILT CHANGES WERE MADE
ON THE FOLLOWING SHEETS _____



FULL SIZE PLANS HAVE BEEN PREPARED USING STANDARD ENGINEERING SCALES. REDUCED SIZED PLANS WILL NOT CONFORM TO STANDARD SCALES. IN MAKING MEASUREMENTS ON REDUCED PLANS, THE ABOVE SCALES MAY BE USED.

J.U.L.I.E.
JOINT UTILITY LOCATION INFORMATION FOR EXCAVATION
1-800-892-0123
OR 811

PROJECT ENGINEER : JOE KANNEL
UNIT CHIEF : MICHELE LINDEMANN
DISTRICT 3 NO. (815) 434-6131
CONTRACT NO. 66777



BEGIN IMPROVEMENT
STA 417+71

SN 038-0184
STA 500+53.00

OMISSION
SN 038-0185
STA 557+09.92 TO 559+88.08

END IMPROVEMENT
STA 633+78

GROSS LENGTH = 21607 FT. = 4.092 MI.
NET LENGTH = 21329 FT. = 4.040 MI.

PLOT DATE = Mar 17, 2008 - 11:41:37 AM
FILE NAME = c:\projects\ed04608\sheets.dgn
PLOT SCALE = 47.8261' / IN.
USER NAME = oerpenter-dj