

INDEX OF SHEETS

1. COVER SHEET
2. GENERAL NOTES
3. SUMMARY OF QUANTITIES
4. TYPICAL SECTIONS
- 5-7. SCHEDULES - PROJECT 1
- 8-10. SCHEDULES - PROJECT 2
11. TYPE II PATCH DETAILS
12. TYPE III & IV PATCH DETAILS
13. TYPICAL PAVEMENT MARKING

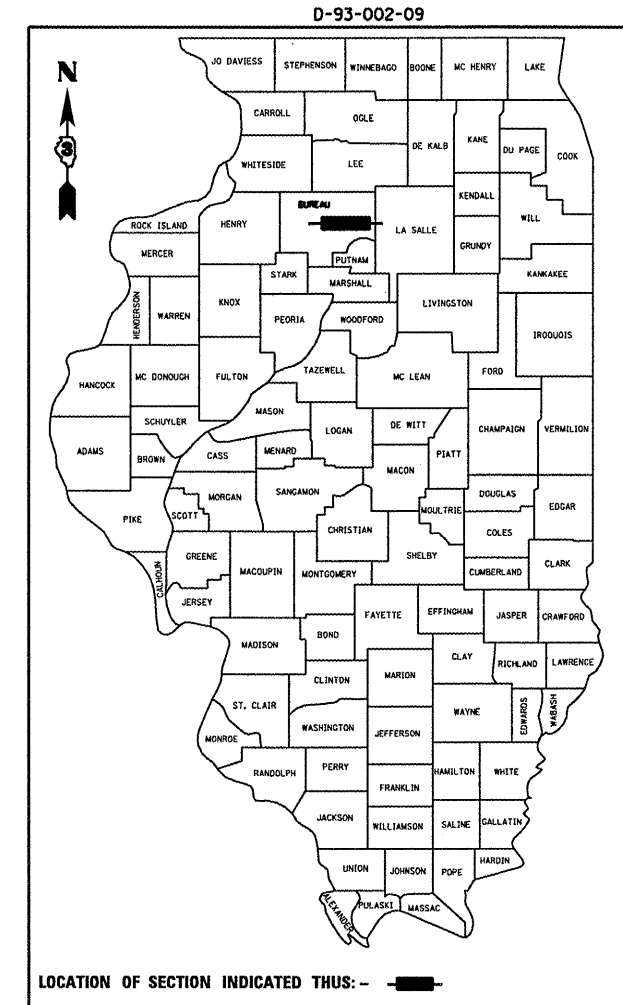
STANDARDS

- 000001-05 STANDARD SYMBOLS, ABBREVIATIONS AND PATTERNS
- 001001-01 AREAS OF REINFORCEMENT BARS
- 001006 DECIMAL OF AN INCH AND OF A FOOT
- 420001-07 PAVEMENT JOINTS
- 420701-02 PAVEMENT FABRIC
- 442101-07 CLASS B PATCHES
- 701101-01 OFF-ROAD OPERATIONS MULTILANE, 4.5 m (15') TO 600 mm (24") FROM PAVEMENT EDGE
- 701106-01 OFF-ROAD OPERATIONS, MULTILANE, MORE THAN 4.5 m (15') AWAY
- 701400-02 APPROACH TO LANE CLOSURE, FREEWAY/EXPRESSWAY
- 701401-04 LANE CLOSURE, FREEWAY/EXPRESSWAY
- 701411-04 LANE CLOSURE, MULTILANE, AT ENTRANCE OR EXIT RAMP FOR SPEEDS ≥ 45 MPH
- 701426-02 LANE CLOSURE, MULTILANE INTERMITTENT OR MOVING OPERATION, FOR SPEEDS ≥ 45 MPH
- 701901 TRAFFIC CONTROL DEVICES

STATE OF ILLINOIS
DEPARTMENT OF TRANSPORTATION
DIVISION OF HIGHWAYS
PROPOSED
HIGHWAY PLANS
FAI ROUTE 80 (I-80)
SECTION D3 PAVEMENT PATCHING 2009-01

BUREAU COUNTY
C-93-074-08
CLASS B PAVEMENT PATCHING

F.A.I. RTE.	SECTION	COUNTY	TOTAL SHEETS	SHEET NO.
80	D3 PAVEMENT PATCHING	BUREAU	13	1
FED. ROAD DIST. NO.	ILLINOIS	CONTRACT NO. 66778		



LOCATION OF SECTION INDICATED THUS: - [black rectangle] -

FUNCTIONAL CLASSIFICATION
RURAL: INTERSTATE
FAI ROUTE 80
2005 ADT = 16500
P.V. = 59.2% M.U. = 36.4% S.U. = 4.4%

STATE OF ILLINOIS
 DEPARTMENT OF TRANSPORTATION
 DIVISION OF HIGHWAYS

SUBMITTED 3/25 2008

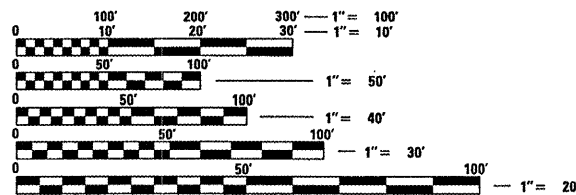
George J. Pappas
 DEPUTY DIRECTOR OF HIGHWAYS, REGION ENGINEER

May 9, 2008
Eric E. Harn
 ENGINEER OF DESIGN AND ENVIRONMENT

May 9, 2008
Christine M. Reed
 DIRECTOR OF HIGHWAYS, CHIEF ENGINEER

PRINTED BY THE AUTHORITY
OF THE STATE OF ILLINOIS

PROJECT 1 BEGINS **PROJECT 1 ENDS** **PROJECT 2 ENDS**
 500' WEST OF CH 19 (M.P.) 63.90 IL ROUTE 89 (70.15) LASALLE/BUREAU COUNTY LINE (M.P. 73.00)

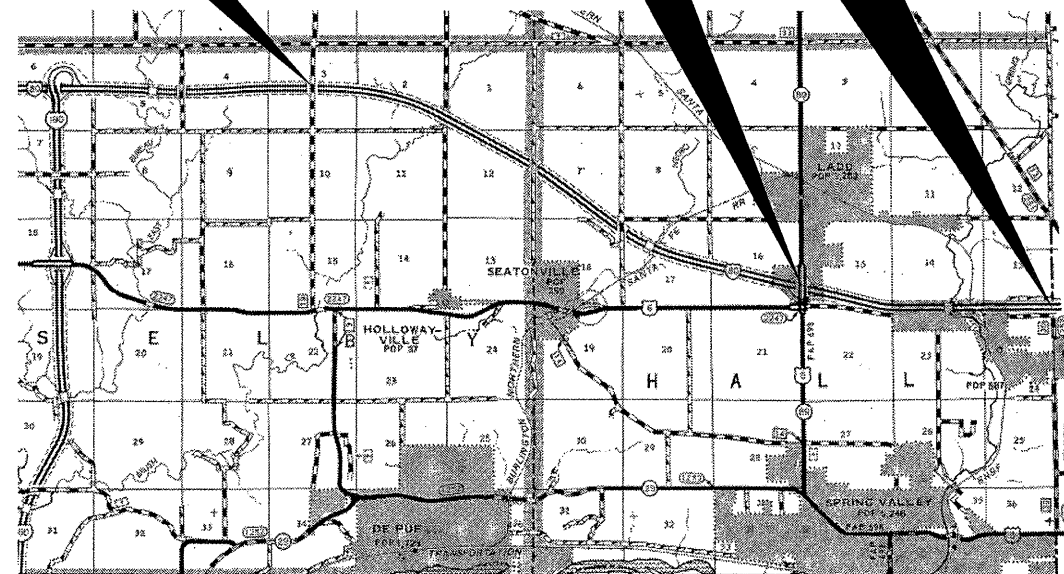


FULL SIZE PLANS HAVE BEEN PREPARED USING STANDARD ENGINEERING SCALES. REDUCED SIZED PLANS WILL NOT CONFORM TO STANDARD SCALES. IN MAKING MEASUREMENTS ON REDUCED PLANS, THE ABOVE SCALES MAY BE USED.

J.U.L.I.E.
 JOINT UTILITY LOCATION INFORMATION FOR EXCAVATION
 1-800-892-0123
 OR 811

PROJECT ENGINEER : JOE KANNEL
UNIT CHIEF : RON WOODSHANK

CONTRACT NO. 66778



LOCATION MAP
 NOT TO SCALE

GROSS LENGTH: 9.0 MILES = 47,520 FEET
 NET LENGTH: 0.17 MILES = 910 FEET