

F.A.P. RTE.	SECTION	COUNTY	TOTAL SHEETS	SHEET NO.
71	(115-BR)I	FORD	11	1
FED. ROAD DIST. NO. _____		ILLINOIS	CONTRACT NO. 66801	

STATE OF ILLINOIS
DEPARTMENT OF TRANSPORTATION
DIVISION OF HIGHWAYS
**PROPOSED
HIGHWAY PLANS**

FAP ROUTE 71 (IL 54)
SECTION (115-BR)I

FORD COUNTY
C-93-078-08
BRIDGE REPAIR

INDEX OF SHEETS

1. COVER SHEET
2. GENERAL NOTES
3. SUMMARY OF QUANTITIES
4. TYPICAL SECTIONS
5. STAGING DETAILS
6. TEMPORARY CONCRETE BARRIER
7. TYPICAL PAVEMENT MARKING
8. PLAN AND ELEVATION
9. BEAM DETAILS
10. REPAIR DETAILS
11. RAIL DETAILS

STANDARDS

- | | |
|-----------|--|
| 000001-05 | STANDARD SYMBOLS, ABBREVIATIONS AND PATTERNS |
| 001006 | DECIMAL OF AN INCH AND OF A FOOT |
| 482011-03 | HMA SHOULDER STRIPS/SHOULDERS WITH RS OR WIDENING & RS PROJECTS |
| 701001-01 | OFF-ROAD OPERATIONS 2L, 2W, MORE THAN 4.5 m (15') AWAY |
| 701006-02 | OFF-ROAD OPERATIONS 2L, 2W, 4.5 m (15') TO 600 mm (24") FROM PAVEMENT EDGE |
| 701011-01 | OFF-ROAD MOVING OPERATIONS 2L, 2W, DAY ONLY |
| 701201-02 | LANE CLOSURE, 2L, 2W, DAY ONLY, FOR SPEEDS ≥ 45 MPH |
| 701206-01 | LANE CLOSURE, 2L, 2W, NIGHT ONLY, FOR SPEEDS ≥ 45 MPH |
| 701301-02 | LANE CLOSURE, 2L, 2W, SHORT TIME OPERATIONS |
| 701311-02 | LANE CLOSURE, 2L, 2W, MOVING OPERATIONS - DAY ONLY |
| 701321-09 | LANE CLOSURE, 2L, 2W, BRIDGE REPAIR WITH BARRIER |
| 701326-02 | LANE CLOSURE, 2L, 2W, PAVEMENT WIDENING, FOR SPEEDS ≥ 45 MPH |
| 701901 | TRAFFIC CONTROL DEVICES |
| 704001-04 | TEMPORARY CONCRETE BARRIER |

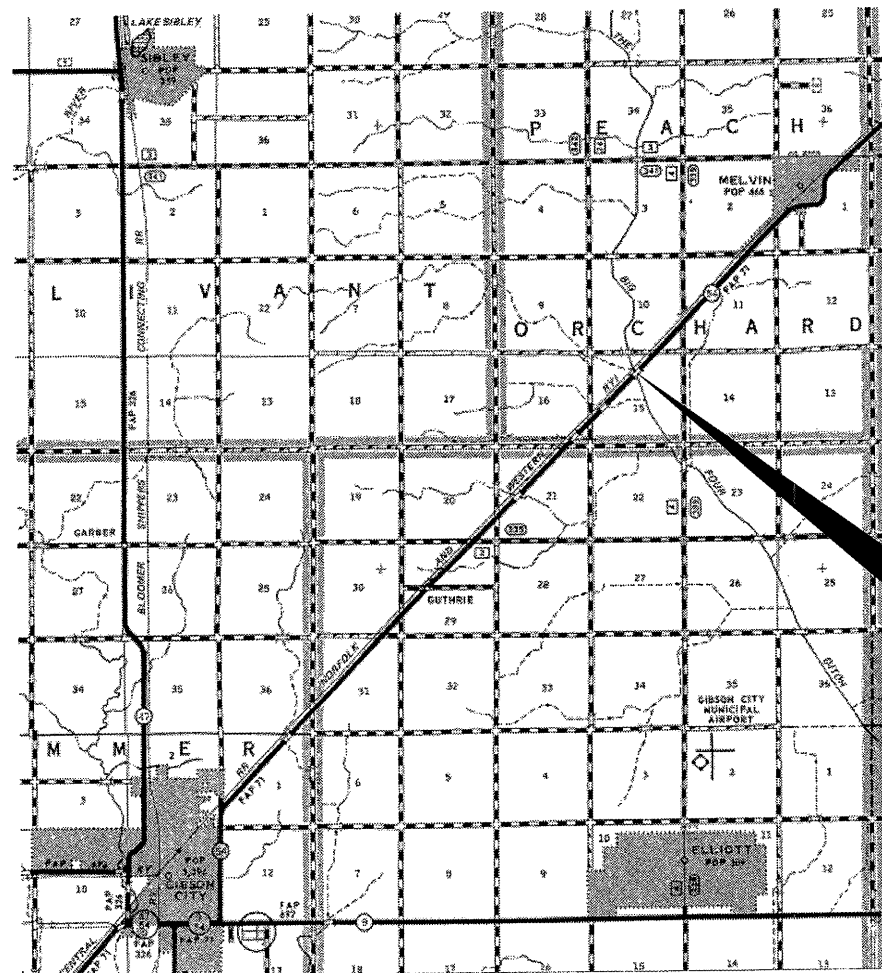
MICROFILMED _____
REEL NUMBER _____
AWARDED _____
RESIDENT ENGINEER _____
AS BUILT CHANGES WERE MADE
ON THE FOLLOWING SHEETS _____

J.U.L.I.E.
JOINT UTILITY LOCATION INFORMATION FOR EXCAVATION
1-800-892-0123

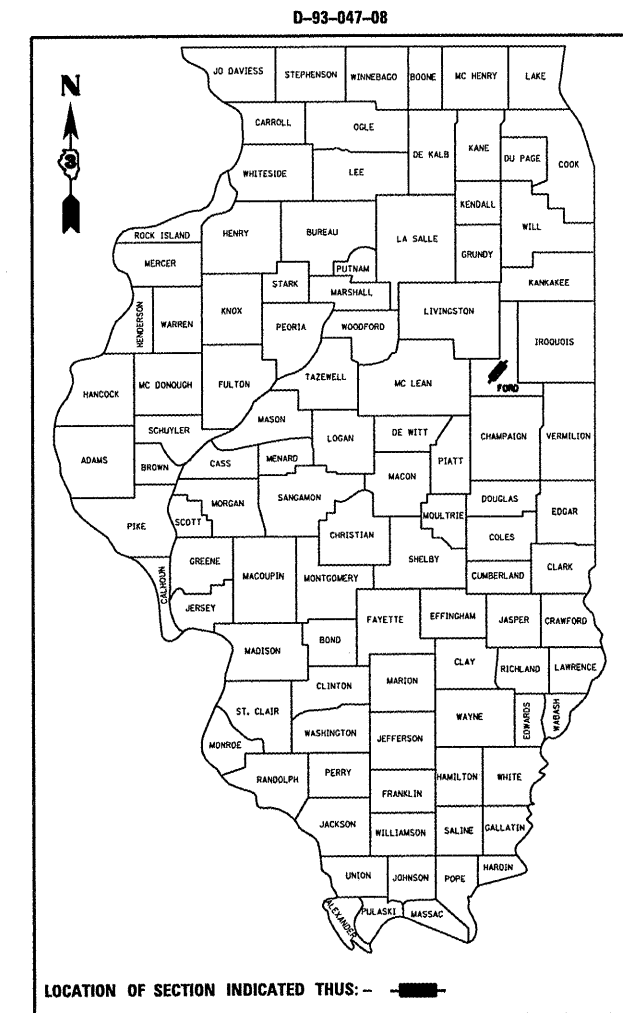
DISTRICT 3 NO. (815) 434-6131

PROJECT ENGINEER: JOE KANNEL
UNIT CHIEF: RON WOODSHANK

CONTRACT NO. 66801



LOCATION MAP
NOT TO SCALE
POINT LOCATION



FUNCTIONAL CLASSIFICATION
RURAL - MINOR ARTERIAL
F.A.P. ROUTE 71 (IL 54)
2005 ADT = 1550
P.V = 83.5% M.U. = 11.3% S.U. = 5.2%

PROJECT LOCATION
SN 027-0077
7.67 MILES NORTH OF IL ROUTE 9

STATE OF ILLINOIS
DEPARTMENT OF TRANSPORTATION
DIVISION OF HIGHWAYS

SUBMITTED 3/25 2008

[Signature]
DEPUTY DIRECTOR OF HIGHWAYS REGION ENGINEER

May 9, 2008
[Signature]
ENGINEER OF DESIGN AND ENVIRONMENT

May 9, 2008
[Signature]
DIRECTOR OF HIGHWAYS, CHIEF ENGINEER

**PRINTED BY THE AUTHORITY
OF THE STATE OF ILLINOIS**