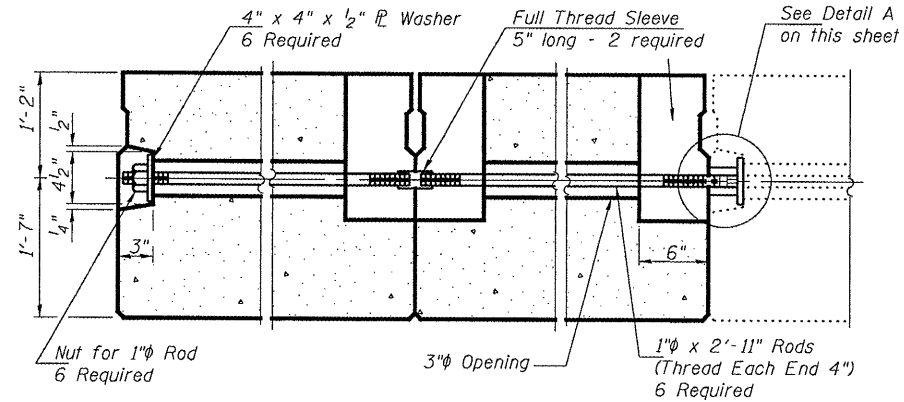
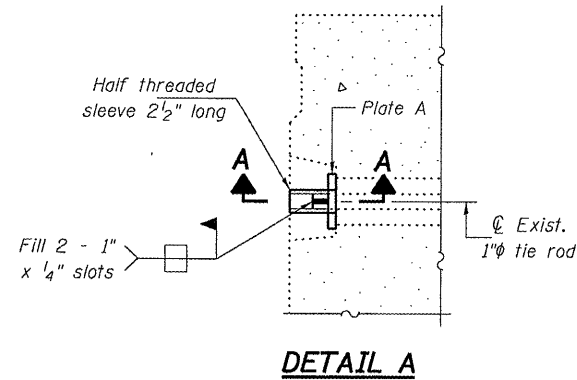
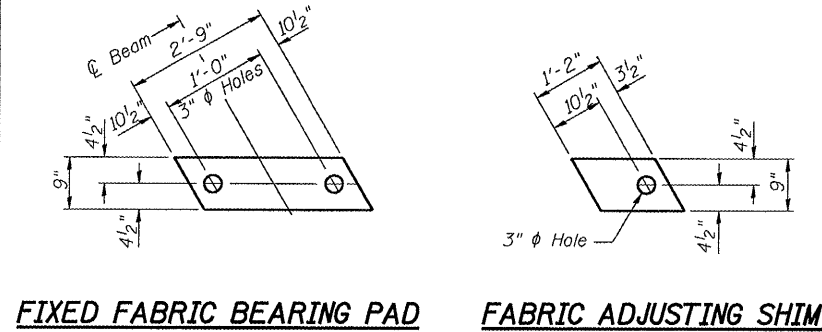


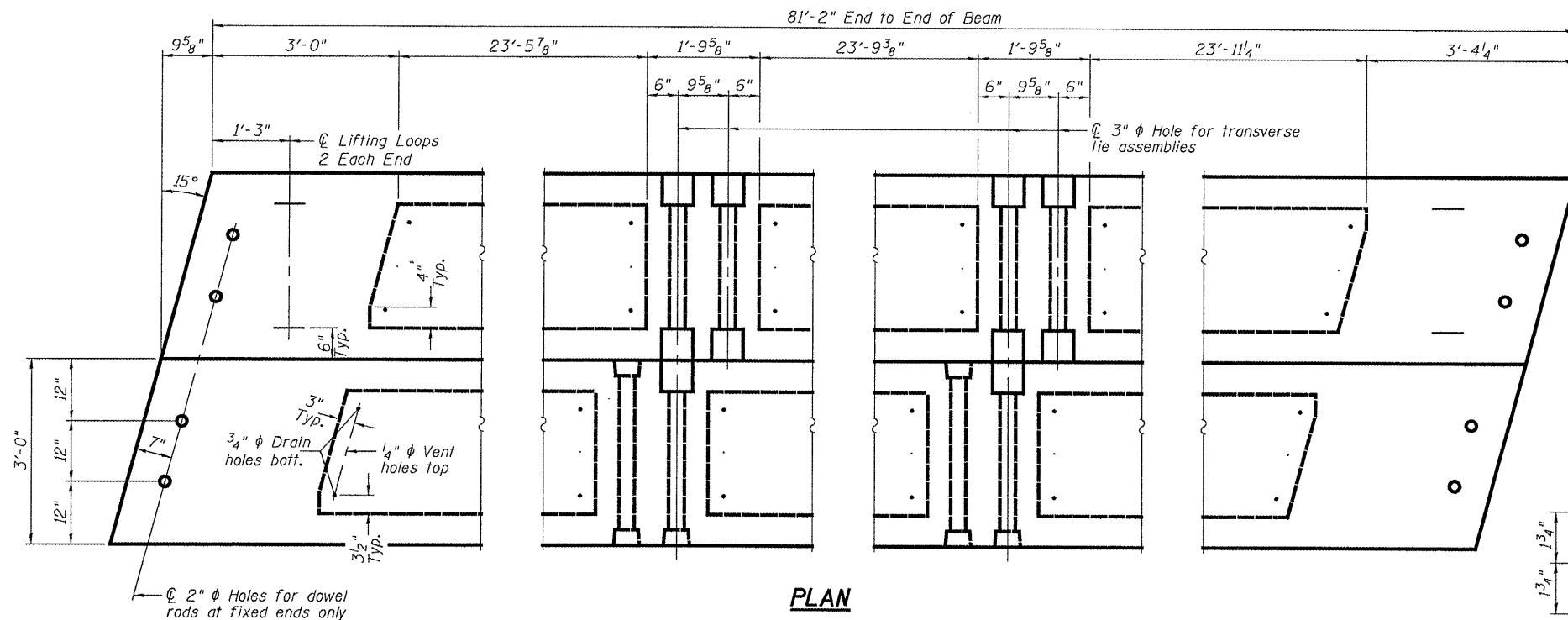
STATE OF ILLINOIS  
DEPARTMENT OF TRANSPORTATION

ROUTE NO.	SECTION	COUNTY	DISTRICT	SHEET NO.	SHEET NO. 3
FAP 71	*	Ford	11	10	4 SHEETS
FED. ROAD DIST. NO. 7	ILLINOIS	FED. AID PROJECT	Contract Number: 66801 * (115-BR)1		

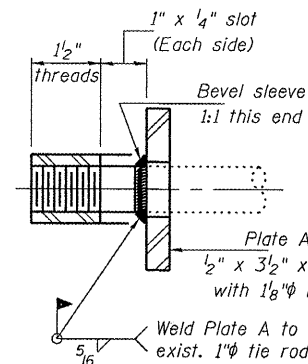
6" x 6" x 16 1/2" Blockout to be filled with Class BS Concrete after Beams have been installed. Cost shall be included in the cost of PPC Deck Beams. Omit on exterior of fascia beam.



TYPICAL TRANSVERSE TIE ASSEMBLY



PLAN



SECTION A-A  
(2 Required)

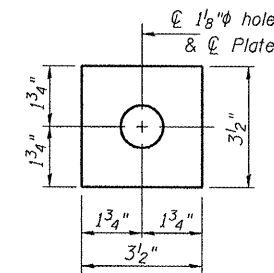
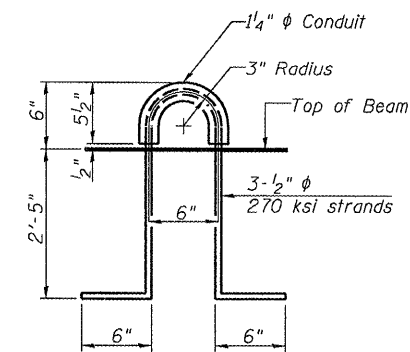
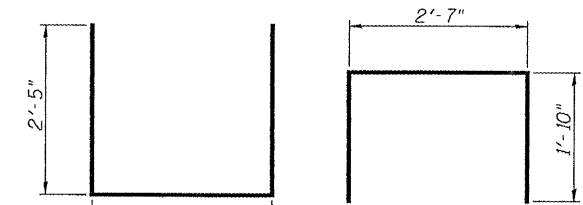


PLATE A  
(2 Required)

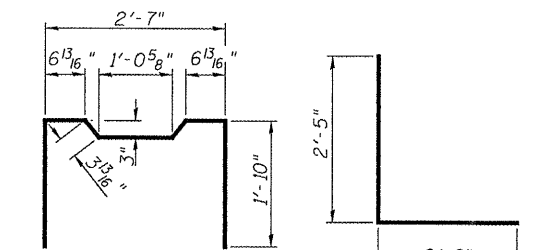


LIFTING LOOP DETAIL



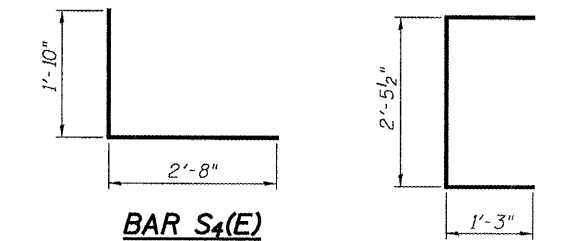
BAR S1(E)

BAR S(E)



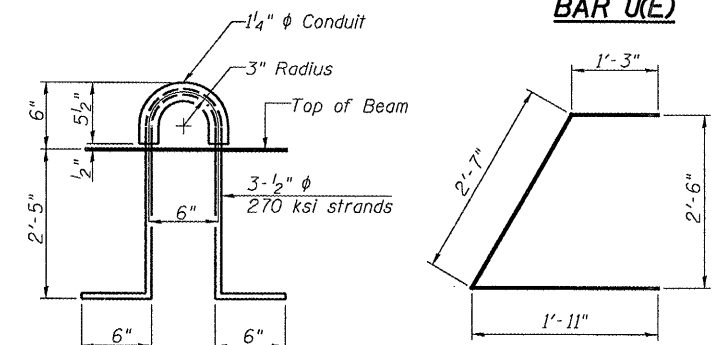
BAR S2(E)

BAR S3(E)



BAR S4(E)

BAR U(E)



BAR U1(E)

NOTES

Prestressing steel shall be uncoated high strength, low relaxation 7-wire strand, Grade 270. The nominal diameter shall be 1/2" and the nominal cross-sectional area shall be 0.153 sq. in. The 1" rods in the transverse tie assembly shall be tightened to a snug fit and the threads set. Pockets on exterior faces of bridge shall be filled with grout after transverse tie assembly is in place. Reinforcement bars shall conform to ASTM A 706 (IL MOD), Grade 60. (See Special Provisions) Two 1/8" fabric adjusting shims of the dimensions shown shall be provided for each bearing pad location. A minimum 2 1/2" lifting pin shall be used to engage the lifting loops during handling. Corrosion Inhibitor, per Article 1020.05(b)(12) and 1021.06 of the Standard Specifications, shall be used in the concrete for precast prestressed concrete deck beams. Compressive strength of prestressed concrete, f'c, shall be 6000 psi. Compressive strength of prestressed concrete at release, f'ci, shall be 5000 psi.

BILL OF MATERIAL

Precast Prestressed Conc. Deck Bms. (33" depth)	Sq. Ft.	487
---	---------	-----

BEAM DETAILS  
F.A.P. RT. 71  
FORD COUNTY  
SN 027-0077

DESIGNED	A.J.B.	EXAMINED	MAY 8, 2008
CHECKED	A.T.H.	PASSED	<i>Ralph E. Anderson</i> ENGINEER OF BRIDGES AND STRUCTURES
DRAWN	Drew Christopher		
CHECKED	A.J.B. A.T.H.		