

F.A.P. RTE.	SECTION	COUNTY	TOTAL SHEETS	SHEET NO.
557	128RS-4	DEKALB	11	1
FED. ROAD DIST. NO.	ILLINOIS	CONTRACT NO.	66802	

INDEX OF SHEETS

- 1 COVER SHEET
- 2 GENERAL NOTES
- 3 SUMMARY OF QUANTITIES
- 4 TYPICAL SECTION
- 5 - 6 SCHEDULE OF QUANTITIES
- 7 SECTION CORNER TIE POINTS
- 8 - 9 PROJECT LAYOUT
- 10 - 11 DETAILS

STANDARDS

- 000001-05 STANDARD SYMBOLS, ABBREVIATIONS AND PATTERNS
- 667101 PERMANENT SURVEY MARKERS
- 701001-01 OFF-ROAD OPERATIONS 2L, 2W, MORE THAN 4.5 m (15') AWAY
- 701006-02 OFF-ROAD OPERATIONS 2L, 2W, 4.5 m (15') TO 600 mm (24") FROM PAVEMENT EDGE
- 701011-01 OFF-ROAD MOVING OPERATIONS 2L, 2W, DAY ONLY
- 701301-02 LANE CLOSURE, 2L, 2W, SHORT TIME OPERATIONS
- 701306-01 LANE CLOSURE, 2L, 2W, SLOW MOVING OPERATIONS DAY ONLY, FOR SPEEDS ≥ 45 MPH
- 701311-02 LANE CLOSURE, 2L, 2W, MOVING OPERATIONS - DAY ONLY
- 701326-02 LANE CLOSURE, 2L, 2W, PAVEMENT WIDENING, FOR SPEEDS ≥ 45 MPH
- 701901 TRAFFIC CONTROL DEVICES
- 781001-02 TYPICAL APPLICATIONS RAISED REFLECTIVE PAVEMENT MARKERS

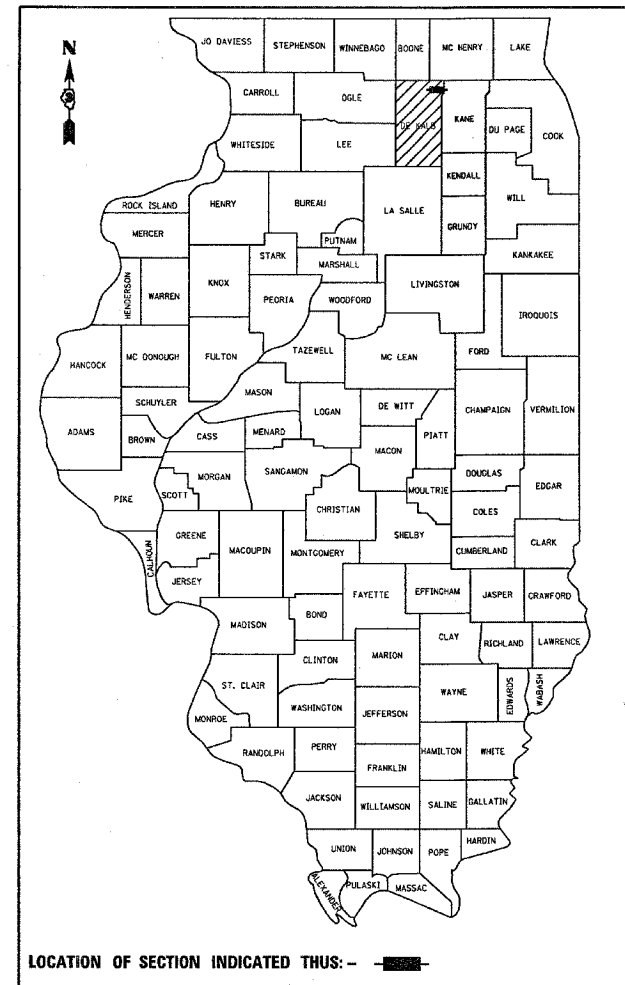
STATE OF ILLINOIS DEPARTMENT OF TRANSPORTATION DIVISION OF HIGHWAYS PROPOSED HIGHWAY PLANS

**FAP ROUTE 557 (IL 72)
SECTION 128RS-4
PROJECT F-0557 (276)
DEKALB COUNTY**

C - 93 - 079 - 08

**2 1/4" MILLING AND RESURFACING
FROM IL 23(N) TO KANE CO LINE**

D-93-048-08



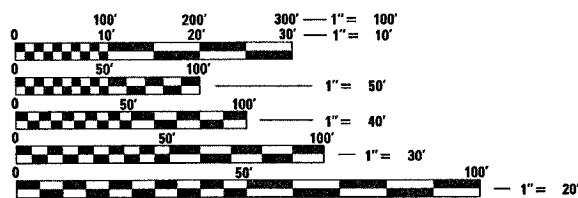
FUNCTION CLASSIFICATION

OTHER PRINCIPAL ARTERIAL (RURAL)

2008 ADT = 6400

P.V. = 86.3% S.U. = 8.1% M.U. = 5.6%

MICROFILMED _____
REEL NUMBER _____
AWARDED _____
RESIDENT ENGINEER _____
AS BUILT CHANGES WERE MADE
ON THE FOLLOWING SHEETS _____

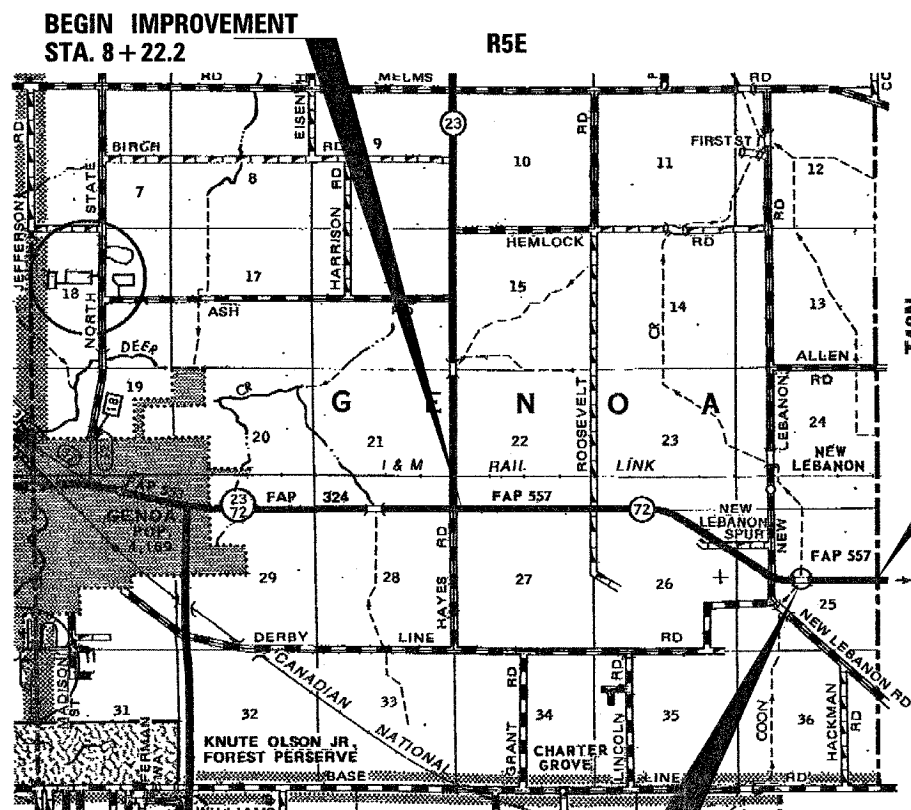


FULL SIZE PLANS HAVE BEEN PREPARED USING STANDARD ENGINEERING SCALES. REDUCED SIZED PLANS WILL NOT CONFORM TO STANDARD SCALES. IN MAKING MEASUREMENTS ON REDUCED PLANS, THE ABOVE SCALES MAY BE USED.

J.U.L.I.E.
JOINT UTILITY LOCATION INFORMATION FOR EXCAVATION
1-800-892-0123
OR 811

**PROJECT ENGINEER : DAVE BROVIK
UNIT CHIEF : BRAD DUNCAN**

DISTRICT 3 NO. (815) 434-6131
CONTRACT NO. 66802



SN 019-0033 OMISSION
STA. 143+66.3 TO STA. 144+91.7

GROSS LENGTH = 16422.8 FT. = 3.11 MI.
NET LENGTH = 16297.4 FT. = 3.09 MI.

STATE OF ILLINOIS
DEPARTMENT OF TRANSPORTATION
DIVISION OF HIGHWAYS

SUBMITTED March 31 20 08

Harry R. ...
DEPUTY DIRECTOR OF HIGHWAYS, REGION ENGINEER

May 9, 2008
Eric E. ...
ENGINEER OF DESIGN AND ENVIRONMENT

May 9, 2008
Christina M. ...
DIRECTOR OF HIGHWAYS, CHIEF ENGINEER

**PRINTED BY THE AUTHORITY
OF THE STATE OF ILLINOIS**

PLOT DATE = Mar 24, 2008 - 02:26:32 PM
FILE NAME = c:\proje\0557\0366802\366802-sht-cover.dgn
PLOT SCALE = 50.0000 / IN.
USER NAME = duncanb