

F.A.P. RTE.	SECTION	COUNTY	TOTAL SHEETS	SHEET NO.
317	26 RS-5	LIVINGSTON	13	1
FED. ROAD DIST. NO. 3	ILLINOIS	CONTRACT NO. 66804		

**STATE OF ILLINOIS**  
**DEPARTMENT OF TRANSPORTATION**  
**DIVISION OF HIGHWAYS**  
**PROPOSED**  
**HIGHWAY PLANS**

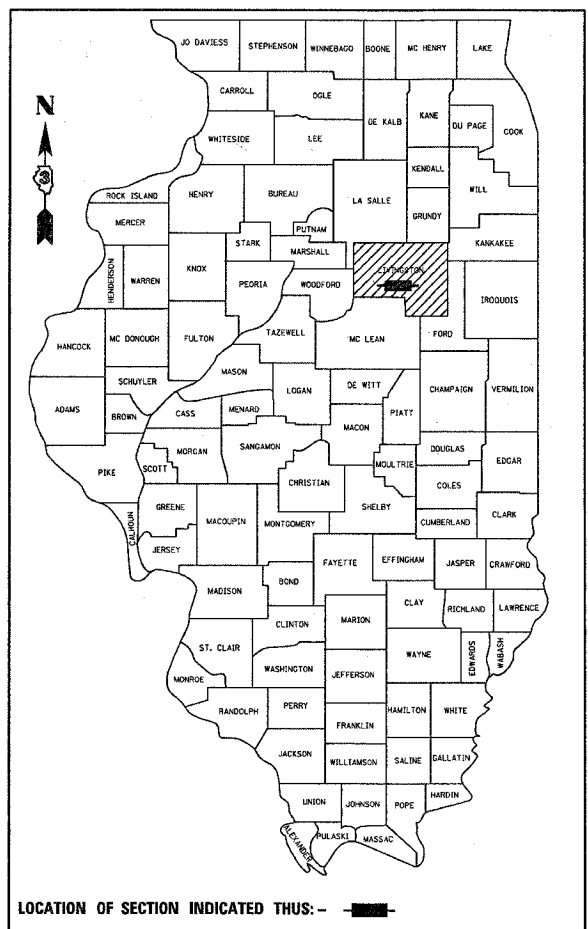
**FAP ROUTE 317 (US 24)**  
**SECTION 26 RS-5**  
**PROJECT NHF-0317 (076)**  
**LIVINGSTON COUNTY**

C - 93 - 081 - 08

**PROJECT DESCRIPTION**  
**PATCHING, MILLING AND RESURFACING OF US 24 THROUGH FAIRBURY**

INDEX OF SHEETS

1	COVER SHEET
2	GENERAL NOTES, STANDARDS, AND SIGNATURE BLOCK
3-4	SUMMARY OF QUANTITIES
5	TYPICAL SECTIONS
6-7	SCHEDULES OF QUANTITIES
8	TIE POINTS
9	PAVEMENT MARKING SHEETS
10	DETECTOR LOOP SHEETS
11-13	DETAILS

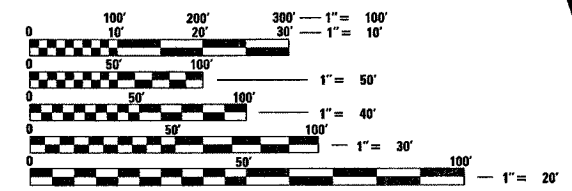


LOCATION OF SECTION INDICATED THUS:

**PROJECT BEGINS STA. 491+67**  
**WEST CORPORATE LIMITS FAIRBURY**

**PROJECT ENDS STA. 591+57**  
**EAST CORPORATE LIMITS FAIRBURY**

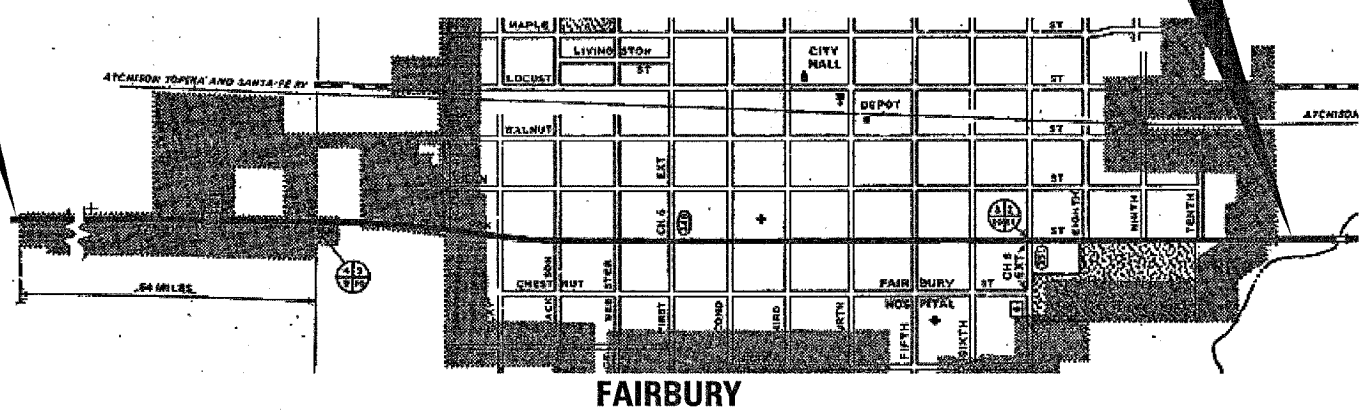
MICROFILMED \_\_\_\_\_  
 REEL NUMBER \_\_\_\_\_  
 AWARDED \_\_\_\_\_  
 RESIDENT ENGINEER \_\_\_\_\_  
 AS BUILT CHANGES WERE MADE  
 ON THE FOLLOWING SHEETS \_\_\_\_\_



FULL SIZE PLANS HAVE BEEN PREPARED USING STANDARD  
 ENGINEERING SCALES. REDUCED SIZED PLANS WILL NOT  
 CONFORM TO STANDARD SCALES. IN MAKING MEASUREMENTS  
 ON REDUCED PLANS, THE ABOVE SCALES MAY BE USED.

**J.U.L.I.E.**  
**JOINT UTILITY LOCATION INFORMATION FOR EXCAVATION**  
**1-800-892-0123**  
**OR 811**

**PROJECT ENGINEER : DAVE BROVIAK**  
**UNIT CHIEF : SCOTT A. FERGUSON**  
  
**DISTRICT 3 NO. (815) 434-6131**  
**CONTRACT NO. 66804**



**FAIRBURY**

GROSS AND NET LENGTH = 9990FT. = 1.89 MI.

**FUNCTION CLASSIFICATION**  
**OTHER PRINCIPAL ARTERIAL**  
**2007 ADT = 8900**  
**P.V. = 90.7%    S.U. = 4.9%    M.U. = 4.4%**

STATE OF ILLINOIS  
 DEPARTMENT OF TRANSPORTATION  
 DIVISION OF HIGHWAYS

SUBMITTED \_\_\_\_\_ 20\_\_\_\_  
*Mark R. ...*  
 DEPUTY DIRECTOR OF HIGHWAYS, REGION ENGINEER  
 May 9, 20 08  
*Eric E. ...*  
 INTERIM ENGINEER OF DESIGN AND ENVIRONMENT  
 May 9, 20 08  
*Christine M. ...*  
 DIRECTOR OF HIGHWAYS, CHIEF ENGINEER

**PRINTED BY THE AUTHORITY**  
**OF THE STATE OF ILLINOIS**

PLOT DATE = Mar 31, 2008 - 11:34:57 AM  
 FILE NAME = c:\projects\366804\366804-shr-cover.dgn  
 PLOT SCALE = 50.00000 / IN.  
 USER NAME = FergusonS

GENERAL NOTES

THE THICKNESS OF HMA SHOWN ON THE PLANS IS THE NOMINAL THICKNESS. DEVIATIONS FROM THE NOMINAL THICKNESS WILL BE PERMITTED WHEN SUCH DEVIATIONS OCCUR DUE TO IRREGULARITIES IN THE EXISTING SURFACE OR BASE ON WHICH THE HMA IS PLACED.

THE HMA SURFACE OF ALL MAILBOX TURNOUTS, PRIVATE ENTRANCES, COMMERCIAL ENTRANCES, AND SIDE ROADS SHALL BE MADE NEATLY, IN A WORKMANLIKE MANNER, AND SHALL ACCURATELY CONFORM TO THE SHAPES AND DIMENSIONS SHOWN ON THE PLAN DETAILS. IF REQUIRED BY THE ENGINEER, THE CONTRACTOR SHALL BE REQUIRED TO SAW CUT THE HMA SURFACE TO CONFORM TO THE SHAPES AND DIMENSIONS SHOWN ON THE PLAN DETAILS. THIS WORK SHALL BE INCLUDED IN THE COST OF THE HMA SURFACE

EXCEPT AS NOTED ON THE PLANS, PAVEMENT GRADES SHOWN ARE AT THE TOP OF PAVEMENT SURFACES.

THE ENGINEER WILL BE THE SOLE JUDGE CONCERNING CURING TIME FOR THE VARIOUS HMA LIFTS.

FOR STABILIZATION, ALL TYPE III BARRICADES SHALL REQUIRE A MINIMUM OF FOUR SAND BAGS PER BARRICADE.

ON EXISTING PAVEMENT WHICH MAY BE SUPERELEVATED, THE NEW HMA PAVEMENT SHALL BE BUILT WITH THE SAME SUPERELEVATION UNLESS NEW SUPERELEVATION RATES ARE GIVEN ON THE PLANS.

ALL ELEVATIONS REFERRING TO U.S.G.S. MEAN SEA LEVEL DATUM.

ANY REFERENCE TO A STANDARD IN THESE PLANS SHALL BE INTERPRETED TO MEAN THE EDITION AS INDICATED BY THE SUBNUMBER SHOWN IN THE LIST OF STANDARDS OR THE COPY INCLUDED IN THESE PLANS.

THE FOLLOWING RATES OF APPLICATION HAVE BEEN USED IN CALCULATING PLAN QUANTITIES:

GRANULAR MATERIALS	2.05	TONS / CU YD
BITUMINOUS MAT PRIME COAT	0.08	GAL / SQ YD OR
	0.375	GAL / SQ YD
AGGREGATE PRIME COAT	0.002	TONS / SQ YD
HMA RESURFACING	112	LBS / SQ YD / IN
SHORT TERM PAVEMENT MARKING	10	FT /100 FT OF APPLICATION
MIX FOR CRACKS, JTS & FLGWYS	0.0003	TONS / SQ YD
LEVEL BINDER (HAND METHOD)	0.0005	TONS / SQ YD
SUPPLEMENTAL WATERING	3	GAL / SQ YD / APPLICATION
CALCIUM CHLORIDE	2	LB / SQ YD / APPLICATION
TEMPORARY DITCH CHECKS	5	TONS AGGREGATE

ALL DAMAGE TO DEPARTMENT OWNED UNDERGROUND FACILITIES, CAUSED BY THE CONTRACTOR SHALL BE REPAIRED TO THE SATISFACTION OF THE DEPARTMENT AT THE CONTRACTOR'S EXPENSE. THIS SHALL INCLUDE ALL TEMPORARY REPAIRS REQUIRED TO KEEP THE FACILITY OPERATIONAL WHILE MATERIAL IS BEING OBTAINED TO MAKE PERMANENT REPAIRS. SPLICING OF ELECTRIC CABLE SHALL NOT BE ALLOWED. ELECTRIC CABLE SHALL BE REPLACED FROM POLE TO POLE OR CONTROLLER.

MEMBERS OF JULIE KNOWN TO BE WITHIN THE LIMITS OF THE IMPROVEMENT ARE:

NON-MEMBERS OF JULIE KNOWN TO BE WITHIN THE LIMITS OF THE IMPROVEMENT ARE:

STANDARDS

- 000001-05 STANDARD SYMBOLS, ABBREVIATIONS AND PATTERNS
- 001006 DECIMAL OF AN INCH AND OF A FOOT
- 406201-01 MAILBOX TURNOUT
  
- 442201-03 CLASS C AND D PATCHES
- 635006-02 REFLECTOR AND TERMINAL MARKER PLACEMENT
- 635011-01 REFLECTOR MARKER AND MOUNTING DETAILS
- 667101 PERMANENT SURVEY MARKERS
  
- 701006-02 OFF-ROAD OPERATIONS 2L, 2W, 4.5 m (15') TO 600 mm (24") FROM PAVEMENT EDGE
- 701201-02 LANE CLOSURE, 2L, 2W, DAY ONLY, FOR SPEEDS ≥ 45 MPH
- 701306-01 LANE CLOSURE, 2L, 2W, SLOW MOVING OPERATIONS DAY ONLY, FOR SPEEDS ≥ 45 MPH
- 701311-02 LANE CLOSURE, 2L, 2W, MOVING OPERATIONS - DAY ONLY
- 701336-04 LANE CLOSURE, 2L, 2W, WORK AREAS IN SERIES, FOR SPEEDS ≥ 45 MPH
- 701501-04 URBAN LANE CLOSURE, 2L, 2W, UNDIVIDED
- 701901 TRAFFIC CONTROL DEVICES
- 780001-01 TYPICAL PAVEMENT MARKINGS
- 781001-02 TYPICAL APPLICATIONS RAISED REFLECTIVE PAVEMENT MARKERS
- 886001 DETECTOR LOOP INSTALLATIONS
- 886006 TYPICAL LAYOUT FOR DETECTION LOOPS

	HMA Level Binder	HMA Surface
PG Grade	PG70-22	PG70-22
Max % RAP Allowable**	25%	15%
Design Air	4.0% @	4.0% @
Voids	N50	N50
Mixture Composition	IL 9.5	IL 12.5 or IL 9.5
Friction		Mixture D
Aggregate		
Density Test Method	Satisfaction of Engineer	Nuclear/cores

\*\* If RAP percentage is different than listed above, the PG grade may need to be adjusted. This will be determined by the Engineer

STATE OF ILLINOIS  
DEPARTMENT OF TRANSPORTATION  
DISTRICT THREE

PREPARED BY: R. P. Rand  
DISTRICT STUDIES & PLANS ENGINEER

DATE: 3.31.08

EXAMINED BY: Herb Jones  
DISTRICT CONSTRUCTION ENGINEER

J. J. Jones  
DISTRICT MATERIALS ENGINEER

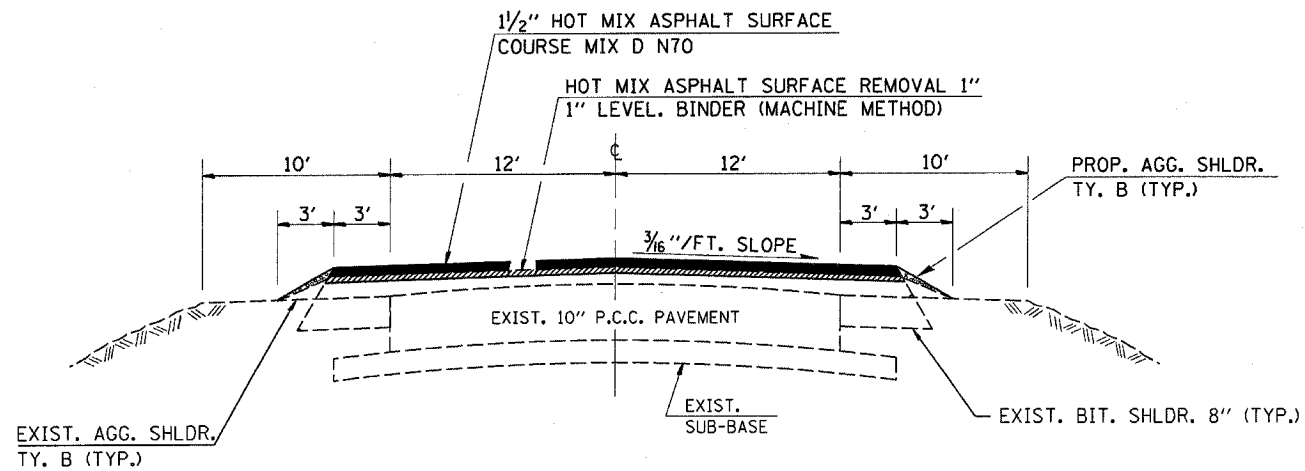
James A. Walker  
DISTRICT OPERATIONS ENGINEER

SUMMARY OF QUANTITIES			80% FED. 20% STATE	
CODE NO.	ITEM	CONSTRUCTION CODE		
		UNIT	I000	TOTAL QUANTITY
20400800	FURNISHED EXCAVATION	CU YD		920
21001000	GEOTECHNICAL FABRIC FOR GROUND STABILIZATION	SQ YD		67
31101810	SUB-BASE GRANULAR MATERIAL, TYPE B 12"	SQ YD		67
40200800	AGGREGATE SURFACE COURSE, TYPE B	TON		6
40600100	BITUMINOUS MATERIALS (PRIME COAT)	GALLON		3061
40600300	AGGREGATE (PRIME COAT)	TON		78
40600535	LEVELING BINDER (HAND METHOD), N70	TON		16.7
40600635	LEVELING BINDER (MACHINE METHOD), N70	TON		858.5
40600895	CONSTRUCTING TEST STRIP	EACH		1
40600982	HOT-MIX ASPHALT SURFACE REMOVAL - BUTT JOINT	SQ YD		474.4
40600985	PORTLAND CEMENT CONCRETE SURFACE REMOVAL - BUTT JOINT	SQ YD		283.6
40600990	TEMPORARY RAMP	SQ YD		16.7
40603340	HOT-MIX ASPHALT SURFACE COURSE, MIX "D", N70	TON		3170.6
40800050	INCIDENTAL HOT-MIX ASPHALT SURFACING	TON		94.8
44000153	HOT-MIX ASPHALT SURFACE REMOVAL, 1"	SQ YD		15330.5
44000155	HOT-MIX ASPHALT SURFACE REMOVAL, 1 1/2"	SQ YD		18052.7
44201827	CLASS D PATCHES, TYPE II, 15 INCH	SQ YD		336.0
48101200	AGGREGATE SHOULDERS, TYPE B	TON		392.8
66700095	PERMANENT SURVEY MARKERS	EACH		10
67000400	ENGINEER'S FIELD OFFICE, TYPE A	CAL MO		3
67100100	MOBILIZATION	L SUM		1
70100450	TRAFFIC CONTROL AND PROTECTION, STANDARD 701201	L SUM		1
70100460	TRAFFIC CONTROL AND PROTECTION, STANDARD 701306	L SUM		1
70100600	TRAFFIC CONTROL AND PROTECTION, STANDARD 701336	L SUM		1
70102620	TRAFFIC CONTROL AND PROTECTION, STANDARD 701501	L SUM		1
70102622	TRAFFIC CONTROL AND PROTECTION, STANDARD 701502	L SUM		1
70300100	SHORT-TERM PAVEMENT MARKING	FOOT		2980

FILE NAME =	USER NAME = Fergusonso	DESIGNED -	REVISED -	<b>STATE OF ILLINOIS DEPARTMENT OF TRANSPORTATION</b>	<b>SUMMARY OF QUANTITIES</b>	F.A.P. RTE.	SECTION	COUNTY	TOTAL SHEETS	SHEET NO.	
c:\projects\66804\66804-shr-cover.dgn		DRAWN -	REVISED -			317	26 RS-5	LIVINGSTON	13	3	
	PLOT SCALE = 50.0000' / IN.	CHECKED -	REVISED -			CONTRACT NO. 66804					
	PLOT DATE = Mar 31, 2008 - 04:57:49 PM	DATE -	REVISED -			SCALE:	SHEET NO. OF	SHEETS	STA.	TO STA.	FED. ROAD DIST. NO.

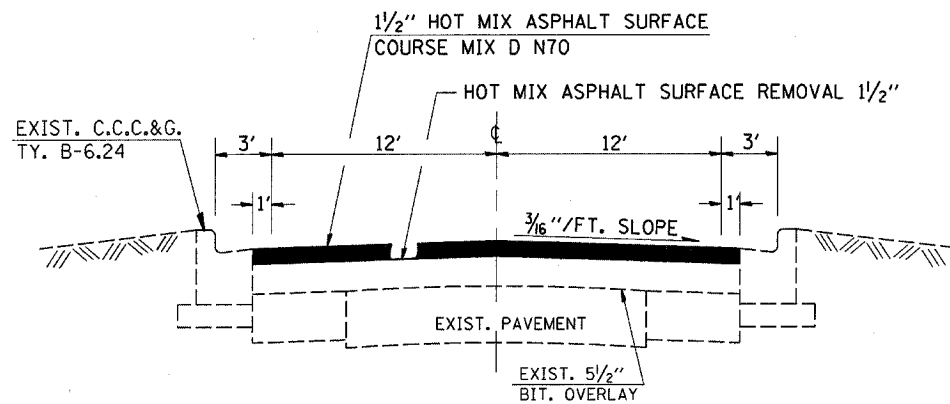
SUMMARY OF QUANTITIES			80% FED. 20% STATE	
CODE NO.	ITEM	UNIT	CONSTRUCTION CODE	
			I000	TOTAL QUANTITY
70300625	TEMPORARY PAINT PAVEMENT MARKING LINE 4"	FOOT		20609
70300635	TEMPORARY PAINT PAVEMENT MARKING LINE 6"	FOOT		2710
70300640	TEMPORARY PAINT PAVEMENT MARKING LINE 8"	FOOT		226
70300645	TEMPORARY PAINT PAVEMENT MARKING LINE 12"	FOOT		410
70300660	TEMPORARY PAINT PAVEMENT MARKING LINE 24"	FOOT		95
70301000	WORK ZONE PAVEMENT MARKING REMOVAL	SQ FT		420
* 78000100	THERMOPLASTIC PAVEMENT MARKING - LETTERS AND SYMBOLS	SQ FT		62
* 78000200	THERMOPLASTIC PAVEMENT MARKING - LINE 4"	FOOT		20609
* 78000400	THERMOPLASTIC PAVEMENT MARKING - LINE 6"	FOOT		2710
* 78000500	THERMOPLASTIC PAVEMENT MARKING - LINE 8"	FOOT		226
* 78000600	THERMOPLASTIC PAVEMENT MARKING - LINE 12"	FOOT		410
* 78000650	THERMOPLASTIC PAVEMENT MARKING - LINE 24"	FOOT		95
* 78100100	RAISED REFLECTIVE PAVEMENT MARKER	EACH		154
78300200	RAISED REFLECTIVE PAVEMENT MARKER REMOVAL	EACH		137
* 88500100	INDUCTIVE LOOP DETECTOR	EACH		12
* 88600100	DETECTOR LOOP, TYPE I	FOOT		1200
* 89502210	MODIFY EXISTING CONTROLLER CABINET	EACH		1
* X8860100	LOOP DETECTOR TESTING	EACH		1

\* SPECIALTY ITEMS



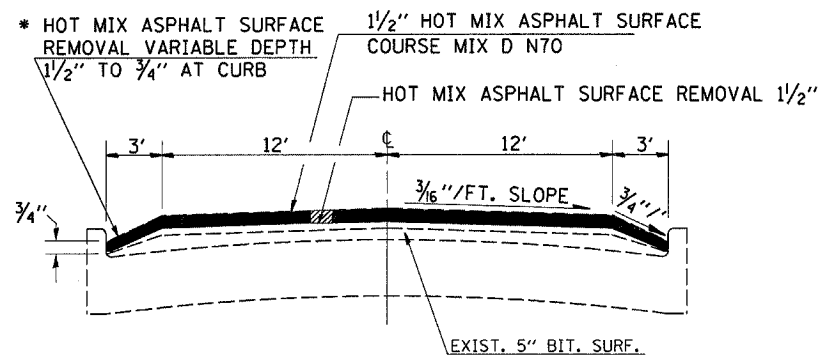
TYPICAL SECTION

STA. 491+67 (WEST CORPORATE CITY LIMITS) TO STA. 537+66.15 (CLAY ST.)



TYPICAL SECTION

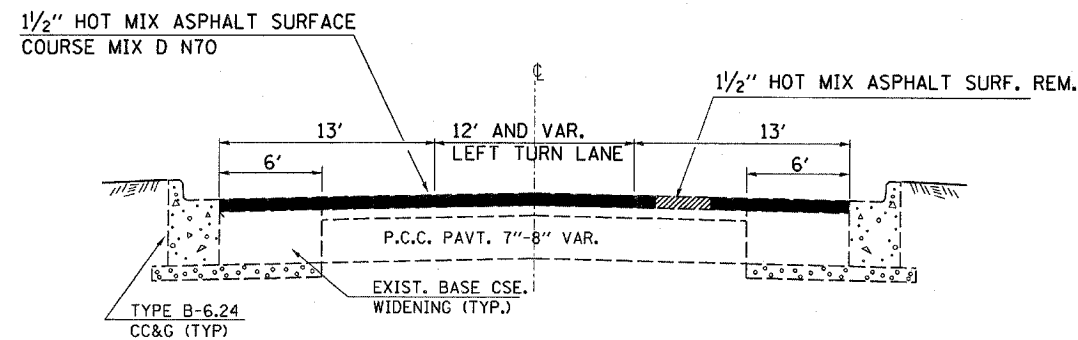
STA. 537+66.15 (CLAY ST.)  
TO  
STA. 541+94.74 NO. (JACKSON ST.)  
STA. 541+95.80 SO.



\* TO BE PAID FOR AS HMA SURF. REM. 1/2"

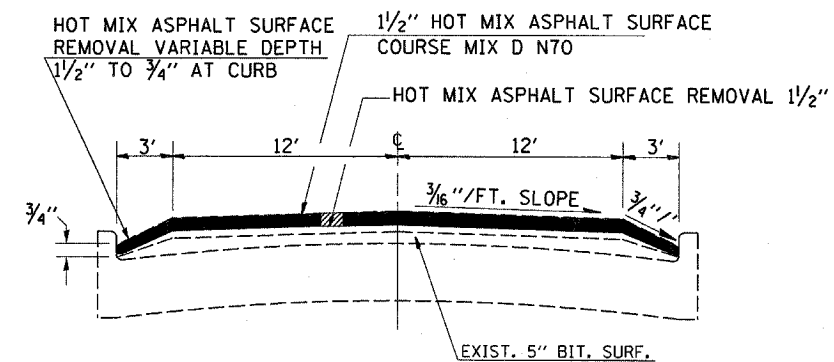
TYPICAL SECTION

STA. 541+94.74 NO. (JACKSON ST.)  
STA. 541+95.80 SO.  
TO  
STA. 547+01 (WEBSTER ST.)



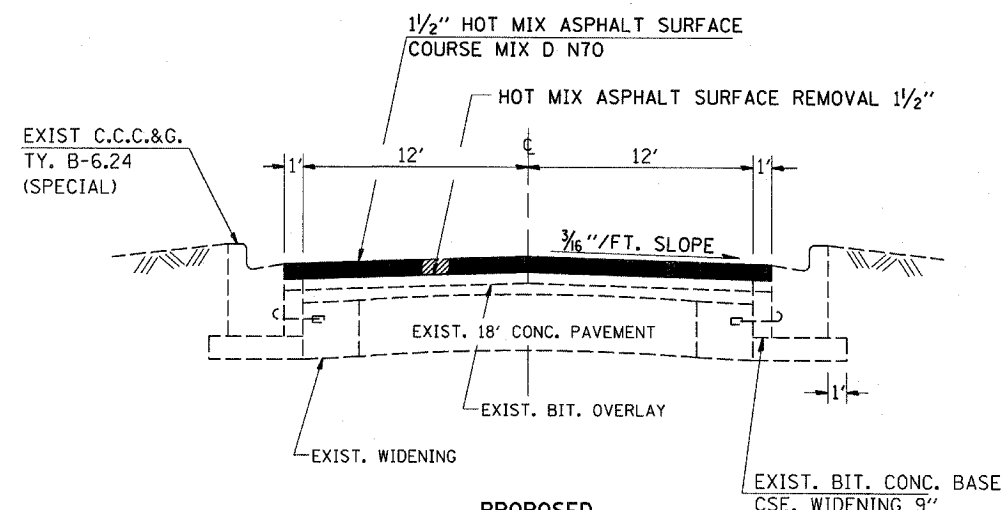
PROPOSED TYPICAL SECTION

U.S. 24 AT FIRST ST.  
STA. 547+01 TO STA. 555+30



TYPICAL SECTION

555+30 SECOND STREET  
TO  
STA. 576+77 (SEVENTH ST.)



PROPOSED TYPICAL SECTION

STA 576+76.96 (SEVENTH ST.) TO STA. 591+57

FILE NAME =	USER NAME = fergusonsa	DESIGNED -	REVISED -	<b>STATE OF ILLINOIS DEPARTMENT OF TRANSPORTATION</b>	<b>TYPICAL SECTIONS</b>	F.A.P. RTE.	SECTION	COUNTY	TOTAL SHEETS	SHEET NO.
en\projects\4366804\4366804-shit-cover.dgn		DRAWN -	REVISED -			317	26 RS-5	LIVINGSTON	13	5
PLOT SCALE = 50.0000' / IN.		CHECKED -	REVISED -			CONTRACT NO. 66804				
PLOT DATE = Mar 31, 2008 - 04:56:44 PM		DATE -	REVISED -			FED. ROAD DIST. NO. ILLINOIS FED. AID PROJECT				
SCALE:						SHEET NO. OF SHEETS		STA. TO STA.		

**SIDEROAD AND ENTRANCE SCHEDULE**

STATION	LOCATION	DESCRIPTION	ROADWAY	AREA	INC. BIT. SURF.	HMA SURFACE CSE. N70	BIT. MAT'L (PR. CT.)	AGG. (PR. CT.)	PCC SURF. REM. BUTT JT.	BIT. SURF. REM. BUTT JT.	FURNISHED EXCAVATION	AGG. SURF. TY. B
					TON	TON	GAL	TON	SQ YD	SQ YD	CU YD	TON
491+67		BEGIN PROJECT WCL										
492+46	RT	CONC.		88	7.4		7	0.2	35.2		10	
494+04	RT	CONC.		88	7.4		7	0.2	35.2		10	
496+53	RT	BIT. & GRAVEL		27.7	2.3		2.2	0.1		6.7	10	0.5
497+38	RT	BIT. & GRAVEL		27.7	2.3		2.2	0.1		6.7	10	0.5
497+75	LT	BIT. & GRAVEL		27.7	2.3		2.2	0.1		6.7	10	0.5
498+85	RT	BIT. & GRAVEL		27.7	2.3		2.2	0.1		6.7	10	0.5
499+65	RT	BIT. & GRAVEL		27.7	2.3		2.2	0.1		6.7	10	0.5
501+25	RT	BIT. & GRAVEL		27.7	2.3		2.2	0.1		6.7	10	0.5
502+63	LT	BIT. & GRAVEL		27.7	2.3		2.2	0.1		6.7	10	0.5
503+90	LT	BIT.		27.7	2.3		2.2	0.1		6.7	10	
505+20	LT	BIT.		27.7	2.3		2.2	0.1		6.7	10	
507+85	LT	BIT.		27.7	2.3		2.2	0.1		6.7	10	
510+65	LT	BIT.		27.7	2.3		2.2	0.1		6.7	10	
512+55	RT	BIT. & GRAVEL		27.7	2.3		2.2	0.1		6.7	10	0.5
515+07	RT	CONC.		27.7	2.3		2.2	0.1		6.7	10	
515+25	LT	BIT.		27.7	2.3		2.2	0.1		6.7	10	
517+05	LT	BIT.	CRYSTAL LN.				0	0.0		53.3	95	
518+20	RT	CONC.	JAN ST.				0	0.0	53.3		95	
518+45	LT	BIT. & GRAVEL		27.7	2.3		2.2	0.1		6.7	10	0.5
518+90	RT	BIT.		27.7	2.3		2.2	0.1		6.7	10	
519+75	RT	BIT.		27.7	2.3		2.2	0.1		6.7	10	
520+35	LT	BIT.		27.7	2.3		2.2	0.1		6.7	10	
522+65	LT	CONC.	WALCREST DR.				0	0.0	53.3		95	
522+90	RT	CONC.	METZ LN.				0	0.0	53.3		95	
523+67	LT	BIT.		27.7	2.3		2.2	0.1		6.7	10	
524+15	RT	BIT.	WITH MBTO	27.7	4		2.2	0.1		6.7	10	
526+90	LT	CONC.		27.7	2.3		2.2	0.1		6.7	10	
527+20	RT	BIT. & GRAVEL		27.7	2.3		2.2	0.1		6.7	10	0.5
528+10	RT	BIT. & GRAVEL		27.7	2.3		2.2	0.1		6.7	10	0.5
529+10	LT	CONC.	ASPEN RD.				0	0.0	53.3		95	
529+90	RT	BIT. & GRAVEL		27.7	2.3		2.2	0.1		6.7	10	0.5
530+10	LT	CONC.		27.7	2.3		2.2	0.1		6.7	10	
531+60	LT	BIT.	C.E.	27.7	2.3		2.2	0.1		6.7	10	
532+80	LT	BIT.	C.E.	27.7	2.3		2.2	0.1		6.7	10	
533+50	LT	BIT.	CALHOUN ST.	107.7			8.6	0.2			95	
533+50	RT	BIT.		27.7	2.3		2.2	0.1		6.7	10	
534+10	RT	CONC.		27.7	2.3		2.2	0.1		6.7	10	
535+60	LT	BIT. & CONC.		27.7	2.3		2.2	0.1		6.7	10	
535+90	RT	BIT. & CONC.		27.7	2.3		2.2	0.1		6.7	10	
536+10	RT	BIT.		27.7	2.3		2.2	0.1		6.7	10	
537+00	RT & LT	BIT AND CONC.		55.4	4.7		4.4	0.1		6.7	10	
537+67	RT & LT	BIT.	CLAY ST	284.8			23.9	0.6				
541+95	RT & LT	BIT.	JACKSON ST.	256.4			21.5	0.5				
547+01	RT & LT	BIT.	WEBSTER ST.	220			18.5	0.4				
550+18	RT & LT	BIT.	FIRST ST.	979			82.2	2.0				
555+30	RT & LT	BIT.	SECOND ST.	226			19	0.5				
559+85	RT & LT	BIT.	THIRD ST.	262			22	0.5				
564+39	RT & LT	BIT.	FOURTH ST.	262			22	0.5				
569+46	RT & LT	BIT.	FIFTH ST.	276			23.2	0.6				
573+52	RT & LT	BIT.	SIXTH ST.	262			22	0.5				
576+77	RT & LT	BIT.	SEVENTH ST.	251			21.1	0.5				
580+97	LT	BIT.	EIGHTH ST.	169			14.2	0.3				
585+16	LT	BIT.	NINTH ST.	109			9.2	0.2				
589+37	LT	BIT.	TENTH ST.	102			8.6	0.2				
591+57		END PROJECT ECL										
<b>TOTAL</b>					<b>94.8</b>	<b>366.4</b>	<b>390.3</b>	<b>11.2</b>	<b>283.6</b>	<b>274.4</b>	<b>920</b>	<b>6</b>

**CLASS D PATCHING SCHEDULE**

STATION	SIDE	SIZE	TYPE II SQ YD
494+15	EB	6' X 12'	8
495+54	EB & WB	6' X 12'	8
497+53	EB & WB	6' X 12'	8
497+79	EB	6' X 12'	8
501+64	EB & WB	6' X 12'	8
502+23	EB & WB	6' X 12'	8
504+39	EB	6' X 12'	8
505+92	EB & WB	6' X 12'	8
506+61	EB & WB	6' X 12'	8
507+14	EB & WB	6' X 12'	8
507+66	EB & WB	6' X 12'	8
509+83	EB & WB	6' X 12'	8
510+83	EB & WB	8' X 12'	11
511+62	EB	6' X 12'	8
512+47	EB & WB	6' X 12'	8
513+21	EB & WB	6' X 12'	8
515+21	EB & WB	6' X 12'	8
515+95	EB & WB	6' X 12'	8
517+33	EB & WB	6' X 12'	8
518+07	EB & WB	6' X 12'	8
518+86	EB & WB	6' X 12'	8
519+12	EB	6' X 12'	8
519+75	EB & WB	6' X 12'	8
520+28	EB & WB	6' X 12'	8
520+81	EB & WB	6' X 12'	8
524+19	EB & WB	6' X 12'	8
524+98	EB & WB	6' X 12'	8
526+20	EB & WB	6' X 12'	8
531+05	EB & WB	6' X 12'	8
531+79	EB & WB	6' X 12'	8
534+59	EB & WB	8' X 12'	11
542+51	EB	10' X 12'	13
	WB	8' X 12'	11
544+04	EB	10' X 12'	13
	WB	8' X 12'	11
545+26	WB	8' X 12'	11
551+59	EB	6' X 12'	8
571+82	EB	6' X 12'	8
576+51	EB	6' X 12'	8
<b>TOTAL</b>			<b>336</b>

**SUBGRADE REPAIR SCHEDULE**

LOCATION AT 1ST STREET	SUB-BASE GRANULAR MATERIAL	GEOTECHNICAL FABRIC FOR GROUND STABILIZATION
	12" SQ YD	SQ YD
542+51 EB	13	13
542+51 WB	11	11
544+04 EB	13	13
544+04 WB	11	11
545+26 WB	11	11
551+59 EB	8	8
<b>TOTAL</b>	<b>67</b>	<b>67</b>

(SEE DETAIL)

**MAINLINE SCHEDULE**

LOCATION	LENGTH FEET	WIDTH FEET	WIDTH WITH PAVED SHLDR	PAVED SHLDR WIDTH	AGG SHLDR WIDTH	AREA	AREA WITH SHLDR	HOT-MIX ASPHALT SURF. CSE. MIX D N 70	LEVEL BIND (MACH.METH) N 70	LEVEL BINDER (HAND METH.)	AGG. PRIME COAT	BIT. PRIME COAT	AGG. SHLDRS. TY B	HOT-MIX ASPHALT SURF.REM BUTT JT	TEMP. RAMP	HOT-MIX ASPHALT SURF.REM 1"	HOT-MIX ASPHALT SURF.REM 1 1/2"
			FEET	FEET	FEET	FEET	FEET	SQ YD	SQ YD	TONS	TONS	TONS	TONS	GAL.	TONS	SQ YD	SQ YD
STA. 491+67 TO 537+66.15	4599.15	24	30	6	6	12264.4	15330.5	1287.76	858.51	7.67	30.66	1226.44	393	200	16.67	15330.5	
STA. 537+66.15 TO STA. 541+94.80	428.65	24	26	2	0	1143.07	1238.32	104.02		0.62	2.48	99.07					1238.32
STA. 541+94.80 TO STA. 547+01	506.2	24	30	6	0	1349.87	1687.33	141.74		0.84	3.37	134.99					1687.33
STA. 547+01 TO STA. 555+30	829	26-38	26-38	0	0	3694.86	3694.86	310.37		1.85	7.39	295.59					3694.86
STA. 555+30 TO 576+77	2147	24	30	6	0	5725.33	7156.67	601.16		3.58	14.31	572.53					7156.67
STA. 576+77 TO STA. 591+57	1480	24	26	2	0	3946.67	4275.56	359.15		2.14	8.55	342.04					4275.56
<b>LINE TOTAL</b>	<b>9990</b>					<b>28124.2</b>	<b>33383</b>	<b>2804.2</b>	<b>858.51</b>	<b>16.7</b>	<b>66.76</b>	<b>2670.66</b>	<b>392.84</b>	<b>200</b>	<b>16.67</b>	<b>15330.5</b>	<b>18052.74</b>

**THERMOPLASTIC PAVEMENT MARKING**

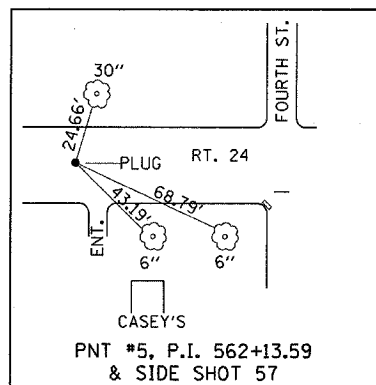
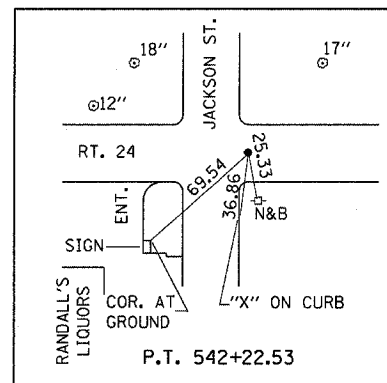
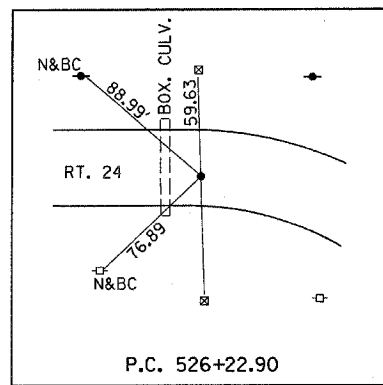
LOCATION		4"		6"		8"	12"	12"	24"	LETTERS & SYMBOLS	SHORT TERM PVMT MK	WORK ZONE PVMT MK REM
		WHITE LIN FT	YELLOW LIN FT	WHITE LIN FT	YELLOW LIN FT	WHITE LIN FT	WHITE LIN FT	YELLOW LIN FT	WHITE LIN FT	SQ FT	LIN FT	SQ FT
		<b>KANKAKEE COUNTY</b>										
STA. 491+67 TO 537+66.15	4599.15	9198.3		1149.8							1380	153.1
STA. 537+66.15 TO STA. 541+94.80	428.65	857.3		107.2							86	14.3
STA. 541+94.80 TO STA. 547+01	506.2	1012.4		126.6							101	16.8
STA. 547+01 TO STA. 555+30	829		2287	420		226	210	200	95	62.4	688	114.5
STA. 555+30 TO 576+77	2147	4294		536.8							429	71.5
STA. 576+77 TO STA. 591+57	1480	2960		370.0							296	49.3
<b>PROJECT TOTAL</b>	<b>9990</b>	<b>18322</b>	<b>2287</b>	<b>420</b>	<b>2290</b>	<b>226</b>	<b>210</b>	<b>200</b>	<b>95</b>	<b>62</b>	<b>2980</b>	<b>420</b>

**TEMPORARY PAVEMENT MARKING**

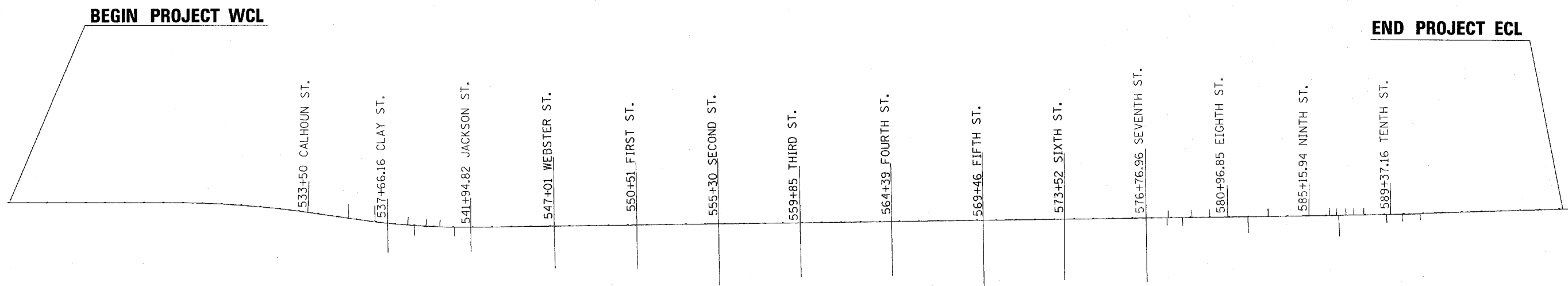
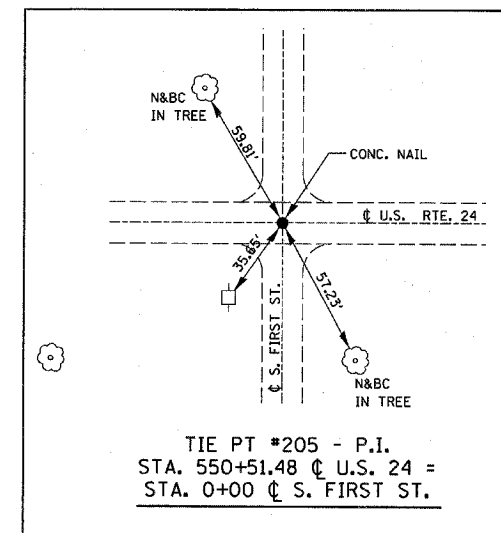
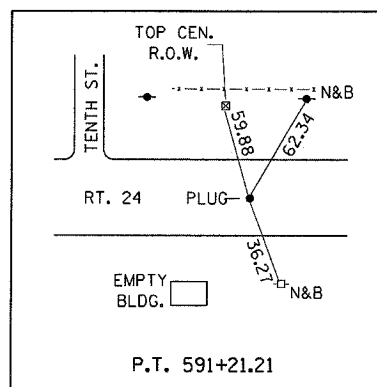
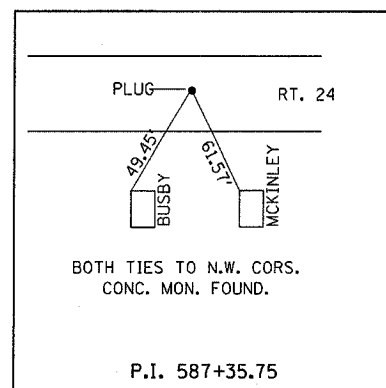
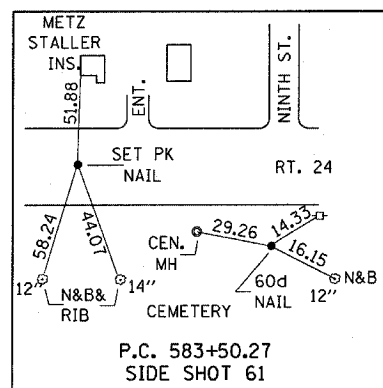
LOCATION		4"		6"		8"	12"	12"	24"
		WHITE LIN FT	YELLOW LIN FT	WHITE LIN FT	YELLOW LIN FT	WHITE LIN FT	WHITE LIN FT	YELLOW LIN FT	WHITE LIN FT
		<b>KANKAKEE COUNTY</b>							
STA. 491+67 TO 537+66.15	4599.15	9198.3		1149.8					
STA. 537+66.15 TO STA. 541+94.80	428.65	857.3		107.2					
STA. 541+94.80 TO STA. 547+01	506.2	1012.4		126.6					
STA. 547+01 TO STA. 555+30	829		2287	420		226	210	200	
STA. 555+30 TO 576+77	2147	4294		536.8					
STA. 576+77 TO STA. 591+57	1480	2960		370.0					
<b>PROJECT TOTAL</b>	<b>9990</b>	<b>18322</b>	<b>2287</b>	<b>420</b>	<b>2290</b>	<b>226</b>	<b>210</b>	<b>200</b>	

**RAISED REFLECTIVE MARKERS**

LOCATION		1 WAY CRYSTAL	1 WAY AMBER	2 WAY AMBER	REMOVAL
		EACH	EACH	EACH	EACH
STA. 491+67 TO 537+66.15	4599.15			57	57
STA. 537+66.15 TO STA. 541+94.80	428.65			5	5
STA. 541+94.80 TO STA. 547+01	506.2			6	6
STA. 547+01 TO STA. 555+30	829	6	26	8	23
STA. 555+30 TO 576+77	2147			27	27
STA. 576+77 TO STA. 591+57	1480			19	19
<b>TOTAL</b>		<b>6</b>	<b>26</b>	<b>122</b>	<b>137</b>



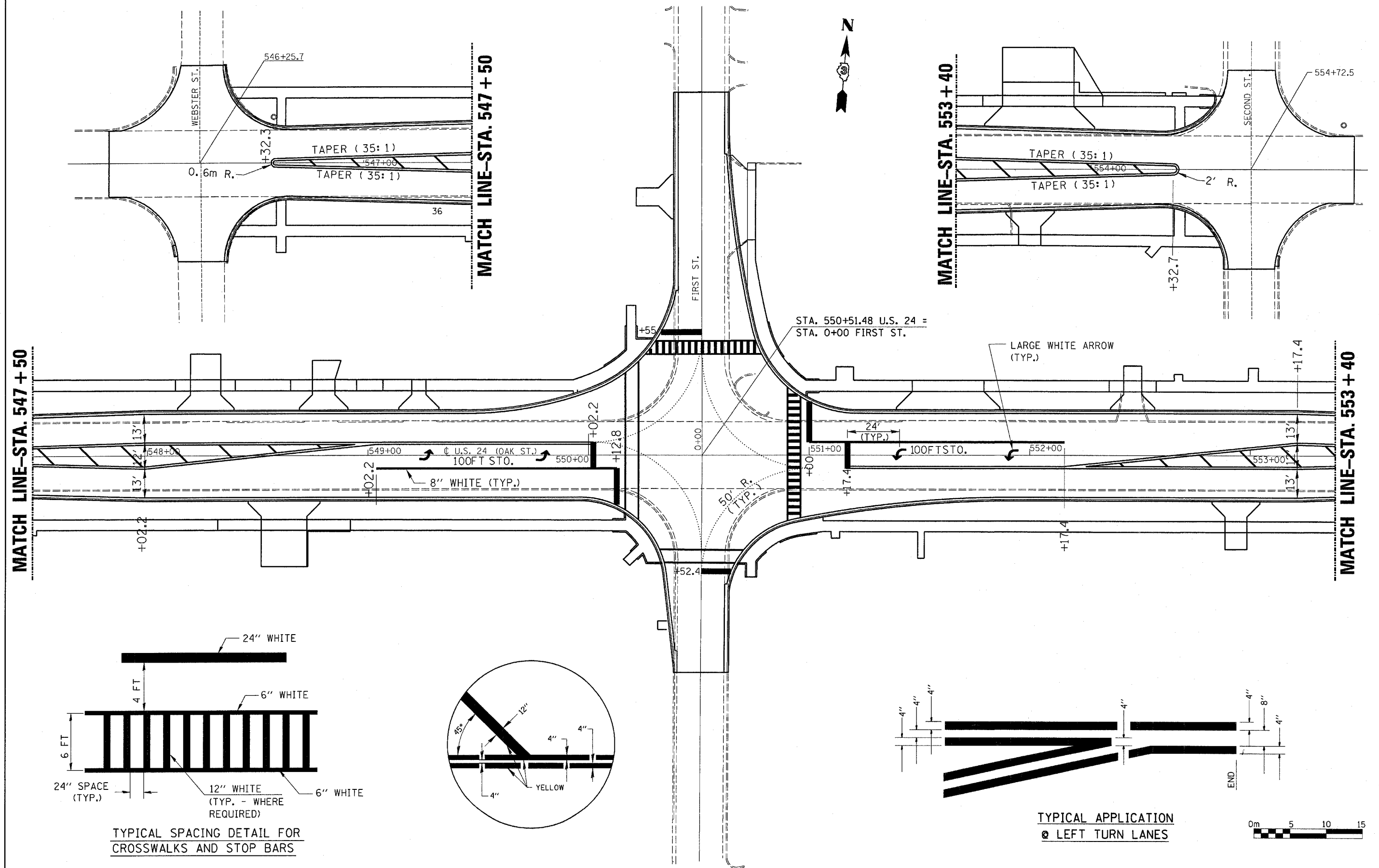
PERMANENT SURVEY MARKERS	
LOCATION (STREET)	QUANTITY EACH
WEST OF FOURTH ST.	1
WEST OF NINTH ST.	1
EAST OF NINTH ST.	1
EAST OF TENTH ST.	1
<b>TOTAL</b>	<b>4</b>



LOCATION MAP

FILE NAME =	USER NAME = Fergusonsa	DESIGNED -	REVISED -	<b>STATE OF ILLINOIS DEPARTMENT OF TRANSPORTATION</b>	<b>TIE POINTS AND PERMANANT SURVEY MARKERS</b>	F.A.P. RTE.	SECTION	COUNTY	TOTAL SHEETS	SHEET NO.	
ca:\projects\4366804\4366804-shr-cover.dgn		DRAWN -	REVISED -			317	26 RS-5	LIVINGSTON	13	8	
PLOT SCALE = 50.0000' / IN.		CHECKED -	REVISED -			CONTRACT NO. 66804					
PLOT DATE = Mar 31, 2008 - 04:56:50 PM		DATE -	REVISED -			FED. ROAD DIST. NO. ILLINOIS FED. AID PROJECT					



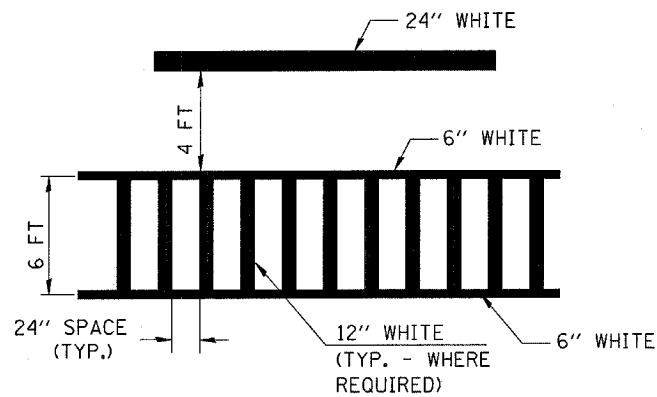


MATCH LINE-STA. 547 + 50

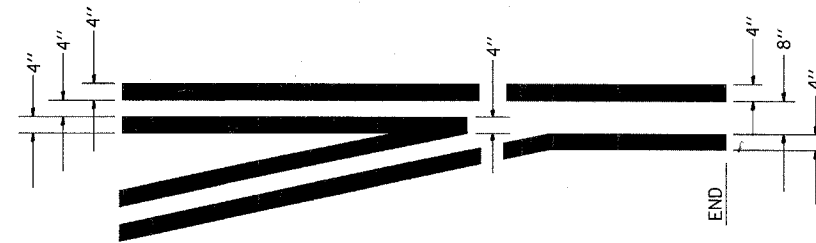
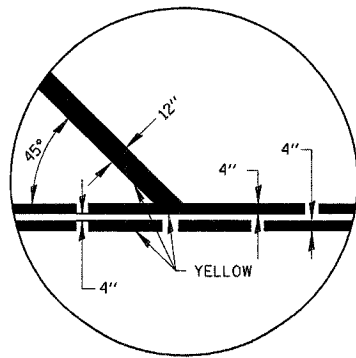
MATCH LINE-STA. 547 + 50

MATCH LINE-STA. 553 + 40

MATCH LINE-STA. 553 + 40



TYPICAL SPACING DETAIL FOR  
CROSSWALKS AND STOP BARS



TYPICAL APPLICATION  
@ LEFT TURN LANES



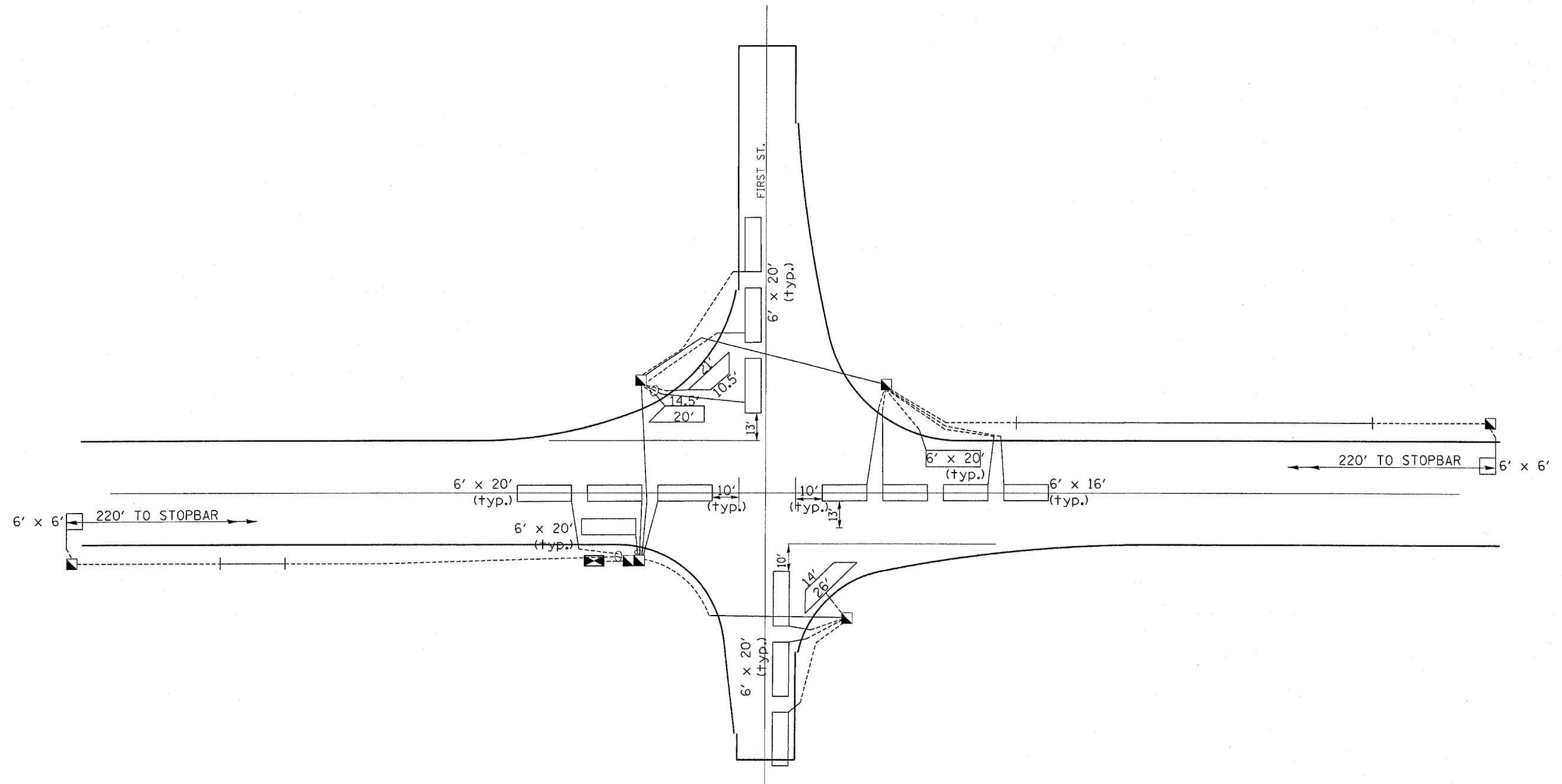
FILE NAME =	USER NAME = fergusonsa	DESIGNED -	REVISED -
ca:\projects\0366804\0366804-sht-coover.dgn		DRAWN -	REVISED -
		CHECKED -	REVISED -
		DATE -	REVISED -

STATE OF ILLINOIS  
DEPARTMENT OF TRANSPORTATION

PAVEMENT MARKING DETAIL (FIRST STREET)

SCALE: SHEET NO. OF SHEETS STA. TO STA.

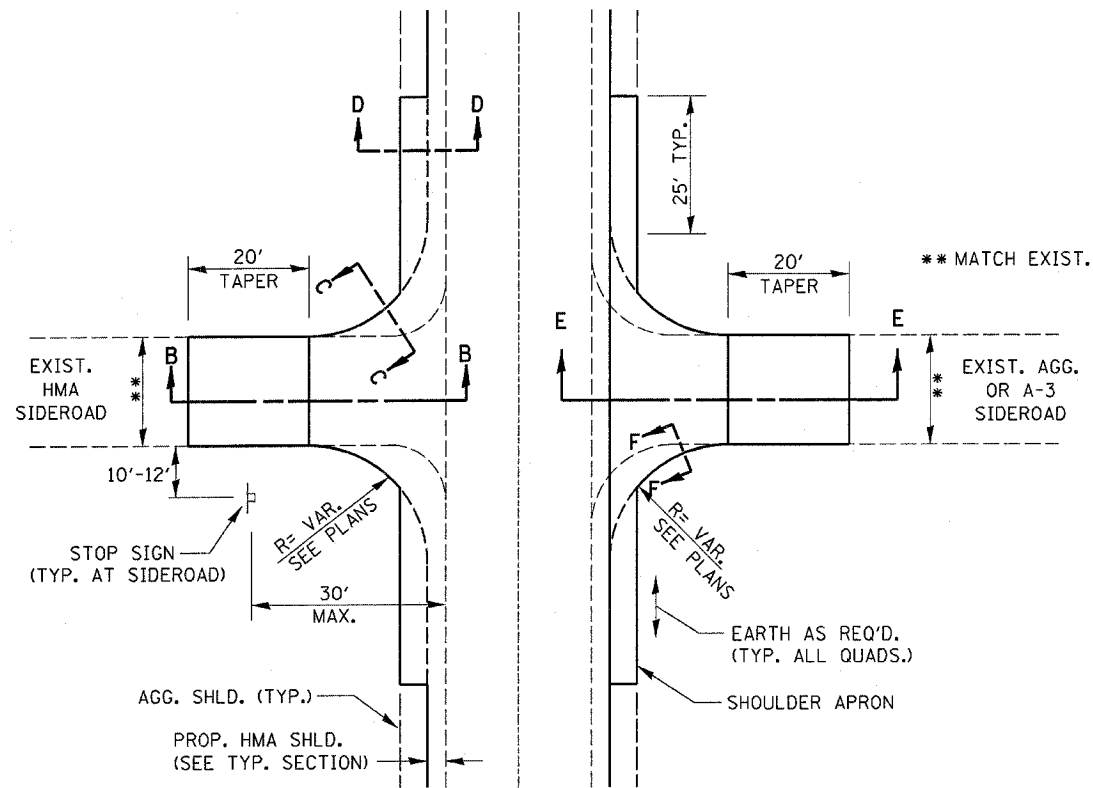
F.A.P. RTE.	SECTION	COUNTY	TOTAL SHEETS	SHEET NO.
317	26 RS-5	LIVINGSTON	13	9
FED. ROAD DIST. NO. ILLINOIS FED. AID PROJECT			CONTRACT NO. 66804	



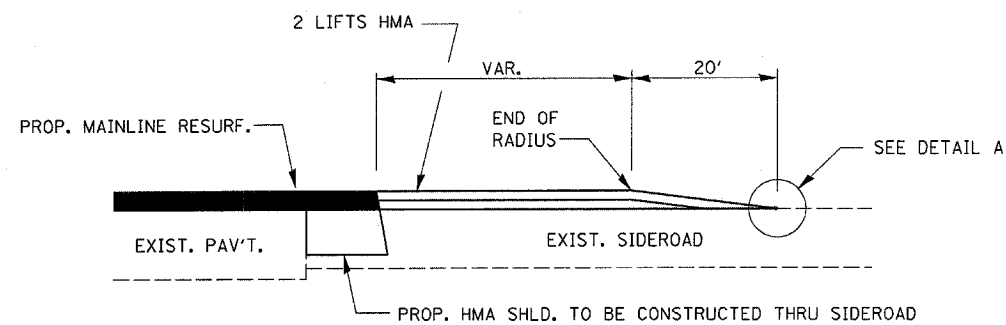
**ELECTRICAL SCHEDULE OF QUANTITIES (FIRST STREET)**

DESCRIPTION	UNIT	QUANTITY
INDUCTIVE LOOP DETECTOR	EACH	12
DETECTOR LOOP, TYPE I	FOOT	1200
LOOP DETECTOR TESTING	EACH	1
MODIFY EXISTING CONTROLLER CABINET	EACH	1

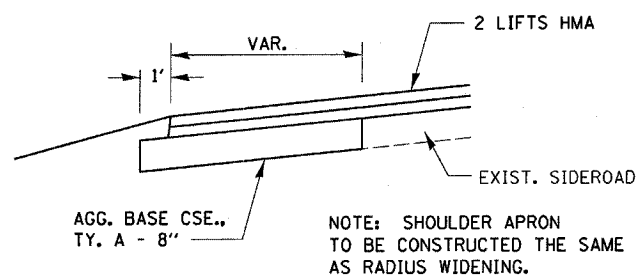
1. SAW CUT EXISTING DETECTOR LOOPS TO BE ABANDONED
2. THE CONTRACTOR SHALL USE THE EXISTING DRILLED HOLE AND CONDUIT WHENEVER PRACTICAL.
3. FOUR (4) TURNS ARE REQUIRED FOR EACH DETECTOR LOOP
4. DETECTOR LOOPS SHALL BE CUT INTO THE PAVEMENT AFTER MILLING HAS BEEN PERFORMED AND BEFORE BINDER AND SURFACE LIFTS HAVE BEEN ADDED.



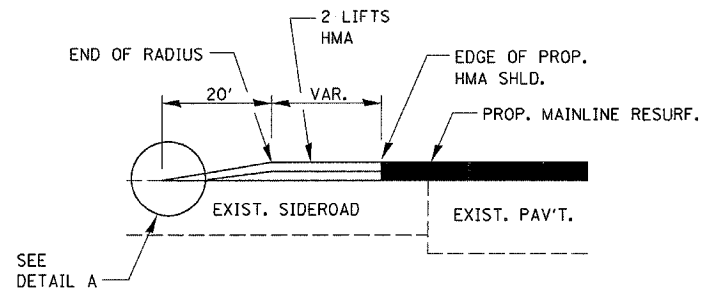
**SIDEROAD DETAIL**



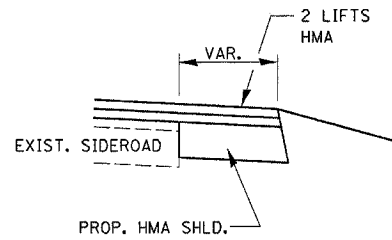
**SECTION E-E**



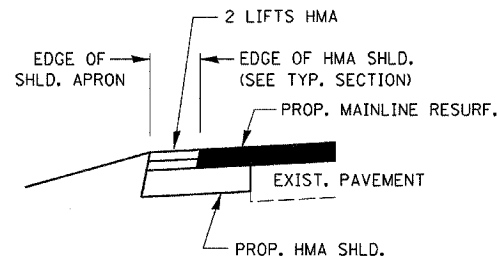
**SECTION F-F**



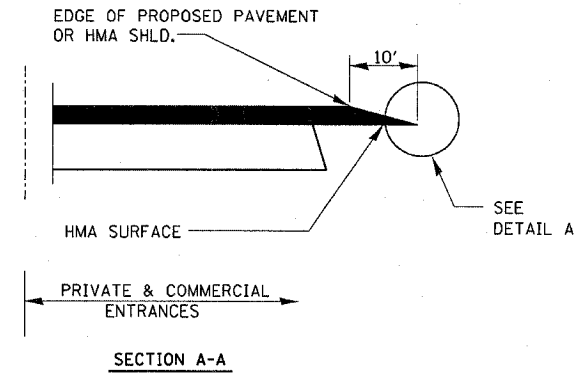
**SECTION B-B**



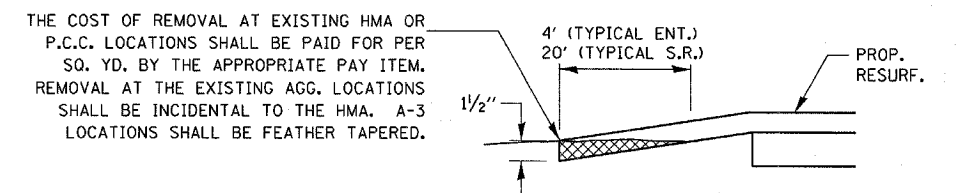
**SECTION C-C**



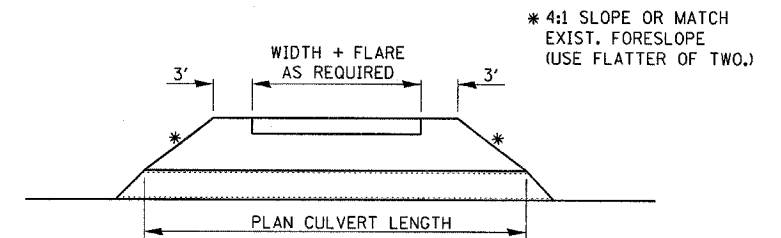
**SECTION D-D**



**DETAILS AT ENTRANCES**



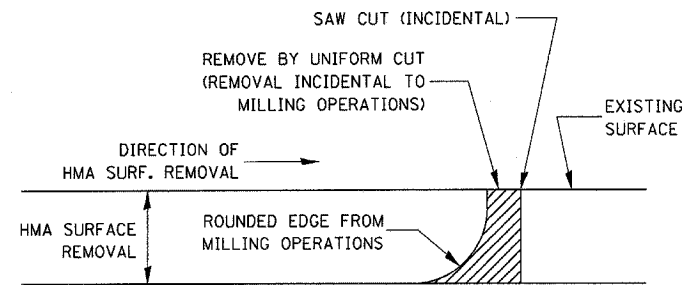
**DETAIL A**



**PLAN AT PRIVATE & COMMERCIAL ENTRANCES**

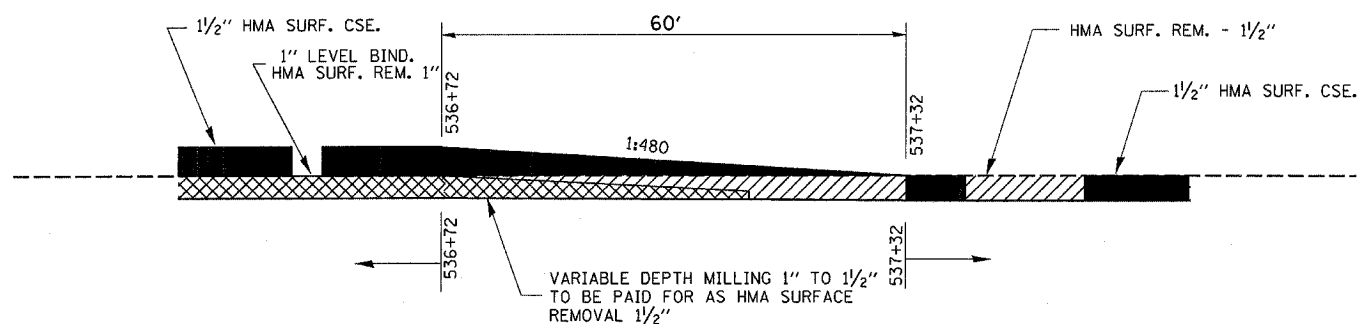
(DO NOT RESURFACE FIELD ENTRANCES)

FILE NAME =	USER NAME = Ferguson	DESIGNED -	REVISED -	<b>STATE OF ILLINOIS DEPARTMENT OF TRANSPORTATION</b>	<b>CADD DETAILS</b>	F.A.P. RTE.	SECTION	COUNTY	TOTAL SHEETS	SHEET NO.	
ca:\projects\4366804\4366804-sht-cover.dgn		DRAWN -	REVISED -			317	26 RS-5	LIVINGSTON	13	11	
PLOT SCALE = 5/8" = 1' / IN.		CHECKED -	REVISED -			CONTRACT NO. 66804					
PLOT DATE = Mar 31, 2008 - 04:57:28 PM		DATE -	REVISED -			FED. ROAD DIST. NO. [ILLINOIS] FED. AID PROJECT					
						SCALE:	SHEET NO. OF SHEETS	STA. TO STA.			

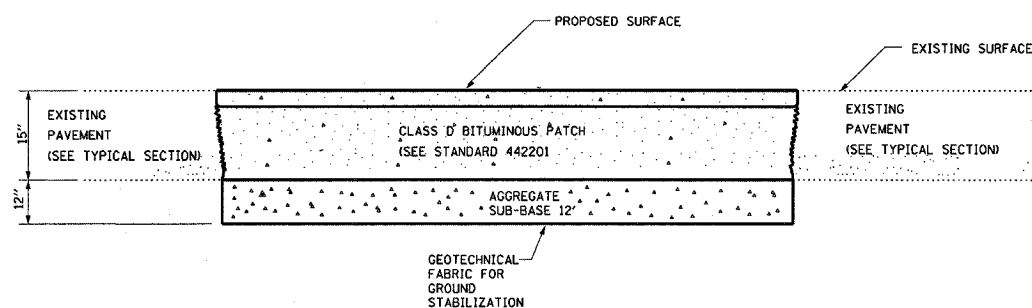


NOTE:  
 WHEN MILLING OPERATIONS PRODUCE A ROUNDED EDGE,  
 THEN A SAW CUT SHALL BE USED TO MANUFACTURE  
 A PERPENDICULAR EDGE AS SHOWN IN THE DETAIL.  
 THE ENGINEER SHALL BE THE SOLE JUDGE  
 CONCERNING THE USE OF THIS DETAIL

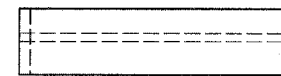
### HMA DETAIL AT BUTT JOINTS



### TAPER DETAIL AT CLAY ST.



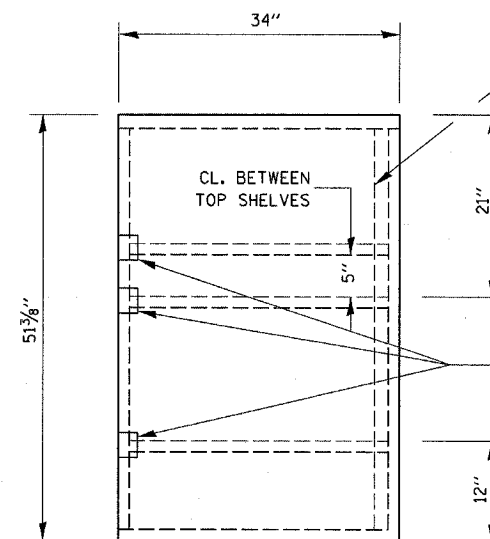
### PROPOSED CLASS D PATCHING DETAIL @ 1ST STREET



SHELF SIDE VIEW

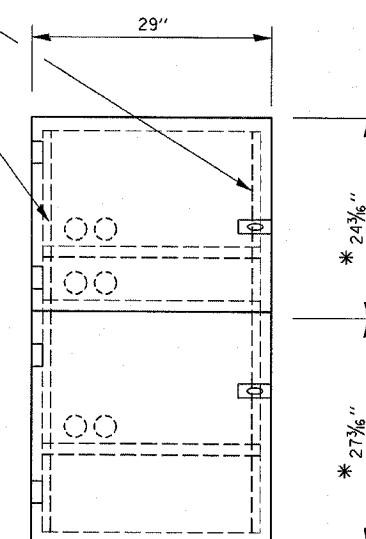


SHELF FRONT VIEW



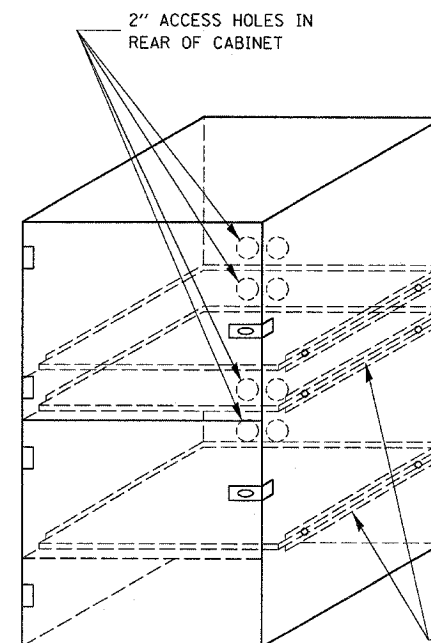
SIDE VIEW

1/2" X 1/2" FLAT STOCK  
 WELD TO FORM DOOR FRAME  
 AND ALSO AROUND PERIMETER  
 OF EACH DOOR.



FRONT VIEW

\* ALLOWS FOR 1/8" CLEARANCE AT TOP AND BOTTOM OF CABINET AND BETWEEN DOORS.

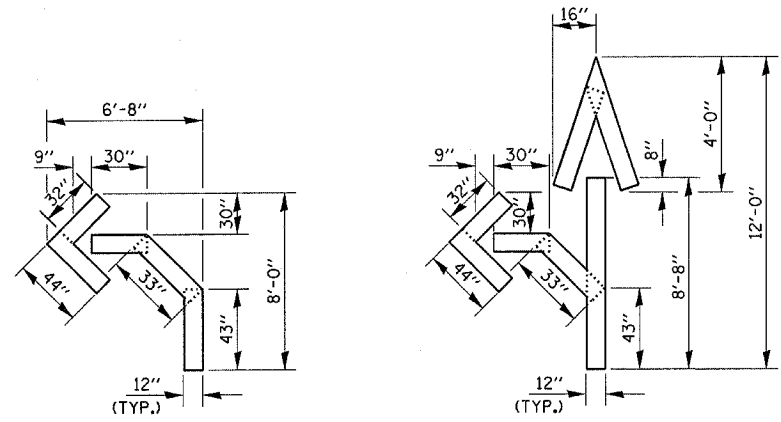


FLAT STOCK DIMENSIONS VARY DEPENDING ON TYPE OF ROLLER ASSEMBLY

- NOTES:
- USE 16 GAUGE STEEL FOR CABINET.
  - THE TOP SHELF SHALL SLIDE IN OR OUT WITH THE TOP DOOR OPEN.
  - ALL HINGES AND HASPS WILL BE WELDED TO THE CABINET.
  - ALL EDGES SHALL BE GROUND SMOOTH.
  - TWO (2" DIA.) ACCESS HOLES WILL BE REQUIRED FOR EACH SHELF.
  - CABINET SHALL BE PAINTED WITH TWO COATS OF FLAT PAINT.
  - 2 EACH MATCHING KEY PADLOCKS, WITH 3 KEYS PROVIDED, MASTER MODEL 3 T OR EQUIVALENT.
  - 4 EACH PLAIN STEEL, NON-REMOVABLE PIN, NO HOLE 4" x 4" SQUARE CORNER HINGES TO BE WELDED ON.
  - 2 EACH EXTRA HEAVY, PLAIN STEEL, FIXED STAPLE, NO HOLE, 7/4" HASPS TO BE WELDED ON.

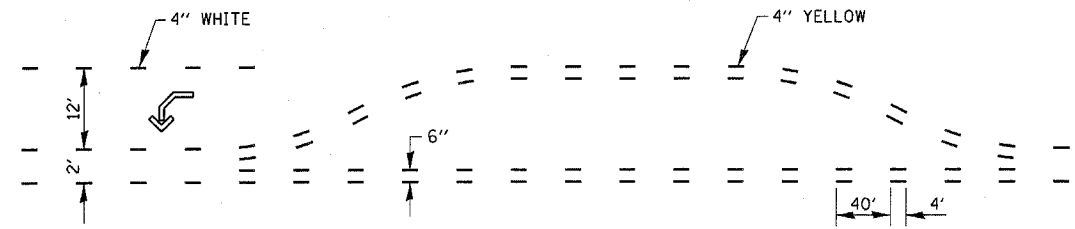
### LOCKABLE COMPUTER CABINET

FILE NAME = ca\projec ts\d366804\d366804-sht-cover.dgn	USER NAME = fergusonse	DESIGNED -	REVISED -	<b>STATE OF ILLINOIS DEPARTMENT OF TRANSPORTATION</b>	<b>CADD DETAILS</b>	F.A.P. RTE. 317	SECTION 26 RS-5	COUNTY LIVINGSTON	TOTAL SHEETS 13	SHEET NO. 12	
PLOT SCALE = 50,0000' / IN.	DRAWN -	REVISED -	SCALE:			SHEET NO. OF SHEETS STA.	TO STA.	CONTRACT NO. 66804			
PLOT DATE = Mar 31, 2008 - 04:57:33 PM	CHECKED -	REVISED -	FED. ROAD DIST. NO. ILLINOIS FED. AID PROJECT								
	DATE -	REVISED -									

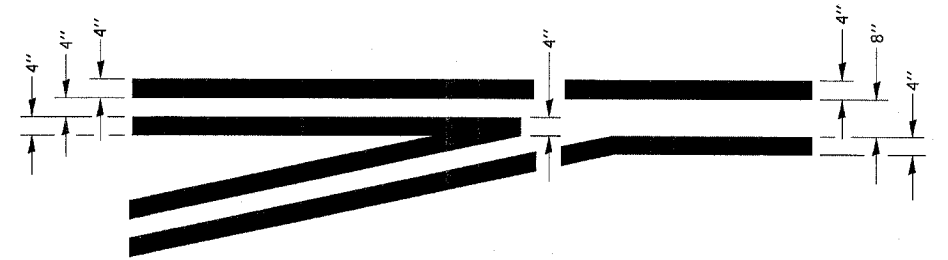


QUANTITY  
12" LINE = 16 LIN. FT.  
OR 4" LINE = 48 LIN. FT.

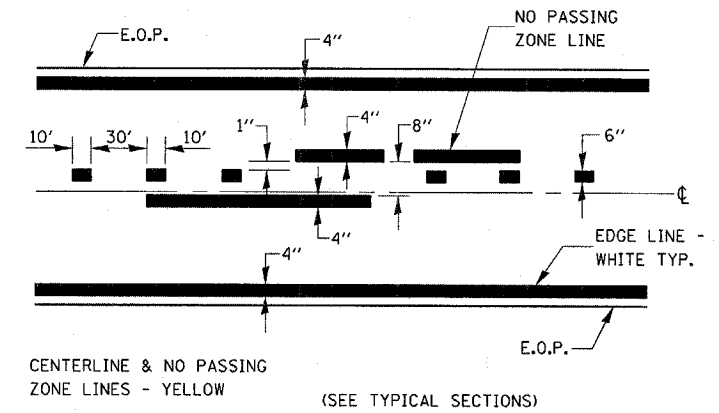
QUANTITY  
12" LINE = 29 LIN. FT.  
OR 4" LINE = 87 LIN. FT.



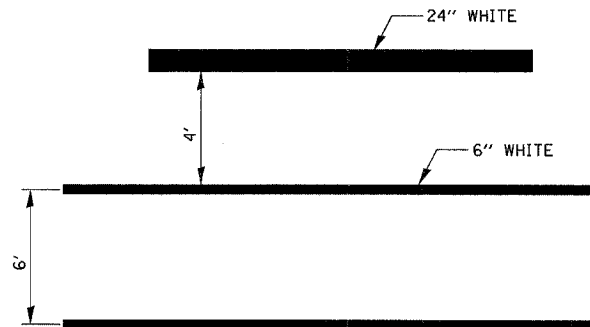
**SHORT-TERM PAVEMENT MARKING  
FOR MEDIANS AND ARROWS**



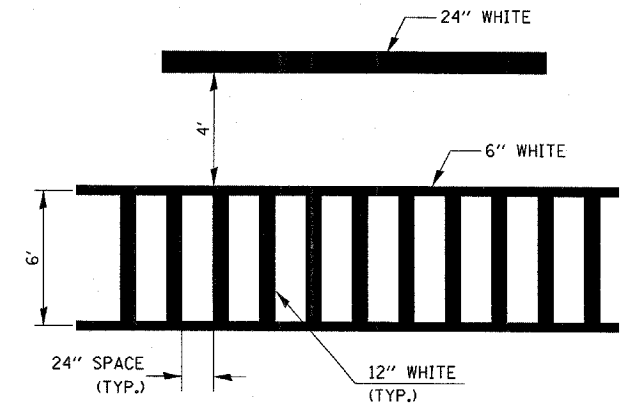
**TYPICAL APPLICATION  
@ LEFT TURN LANES**



**PAVEMENT MARKING**



**TYPICAL SPACING DETAIL FOR  
CROSSWALKS AND STOP BARS**



**TYPICAL SPACING DETAIL FOR  
CROSSWALKS AND STOP BARS**

FILE NAME =	USER NAME = fergusonsa	DESIGNED -	REVISED -	<b>STATE OF ILLINOIS DEPARTMENT OF TRANSPORTATION</b>	<b>CADD DETAILS</b>	F.A.P. RTE.	SECTION	COUNTY	TOTAL SHEETS	SHEET NO.	
en\projects\4366804\4366804-sht-cover.dgn	PLOT SCALE = 50.0000' / IN.	DRAWN -	REVISED -			317	26 RS-5	LIVINGSTON	13	13	
PLOT DATE = Mar 31, 2008 - 04:57:38 PM	DATE -	CHECKED -	REVISED -			SCALE: SHEET NO. OF SHEETS STA. TO STA.		CONTRACT NO. 66804			
								FED. ROAD DIST. NO. ILLINOIS FED. AID PROJECT			