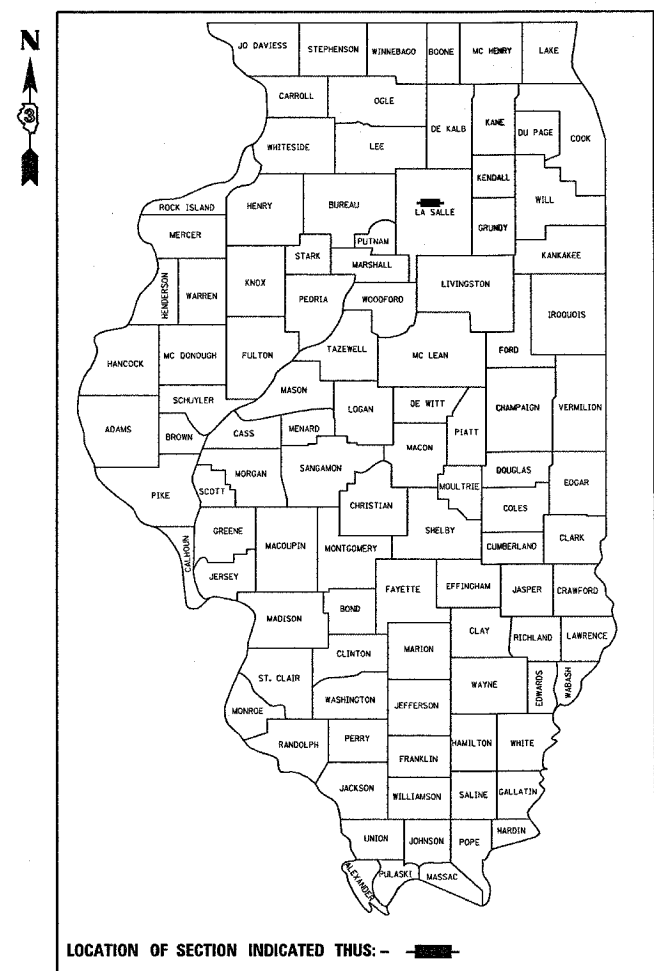


F.A.P. RTE.	SECTION	COUNTY	TOTAL SHEETS	SHEET NO.
623/790	(30,30X-1,2)RS-3&(E)RS-1	LASALLE	24	1
FED. ROAD DIST. NO.	ILLINOIS	CONTRACT NO. 66805		

D-93-051-08



LOCATION OF SECTION INDICATED THUS: - [shaded box] -

**INDEX OF SHEETS**

- 1 COVER SHEET
- 2 GENERAL NOTES
- 3 SUMMARY OF QUANTITIES
- 4-6 TYPICAL SECTIONS
- 7-9 SCHEDULES
- 10 SURVEY TIES
- 11-13 PROJECT LAYOUT
- 14-18 DETECTOR LOOP DETAILS
- 19-21 PAVEMENT MARKING DETAILS
- 22-24 DETAILS

**STATE OF ILLINOIS**  
**DEPARTMENT OF TRANSPORTATION**  
**DIVISION OF HIGHWAYS**

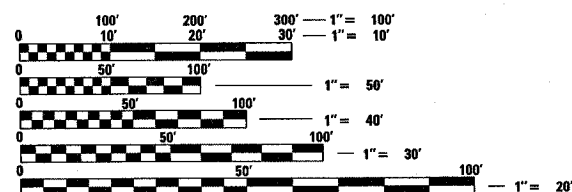
**PROPOSED**  
**HIGHWAY PLANS**

**FAP ROUTE 623 (US 6) & FAP 790 (IL 71)**  
**SECTION (30,30X-1,2)RS-3&(E)RS-1**  
**PROJECT F-0005 (586)**  
**LASALLE COUNTY**

C - 93 - 082 - 08

**WEST CORPORATE LIMIT OF OTTAWA TO 0.3 MILES NORTH OF US 6 (E)**  
**3P MILLING & RESURFACING**

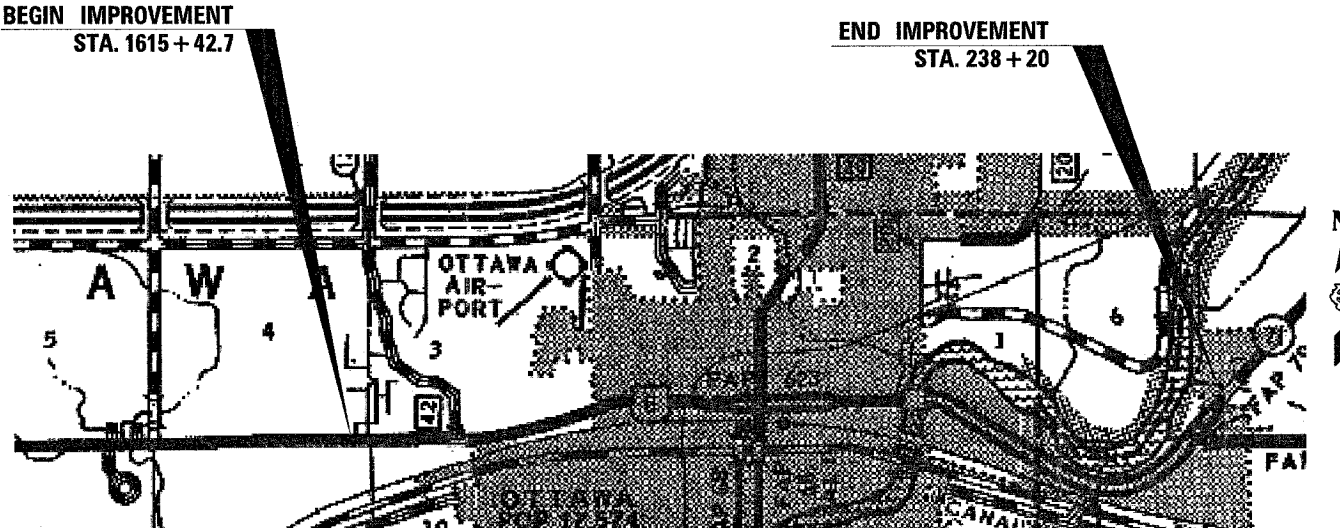
MICROFILMED \_\_\_\_\_  
REEL NUMBER \_\_\_\_\_  
AWARDED \_\_\_\_\_  
RESIDENT ENGINEER \_\_\_\_\_  
AS BUILT CHANGES WERE MADE  
ON THE FOLLOWING SHEETS \_\_\_\_\_



FULL SIZE PLANS HAVE BEEN PREPARED USING STANDARD ENGINEERING SCALES. REDUCED SIZED PLANS WILL NOT CONFORM TO STANDARD SCALES. IN MAKING MEASUREMENTS ON REDUCED PLANS, THE ABOVE SCALES MAY BE USED.

J.U.L.I.E.  
JOINT UTILITY LOCATION INFORMATION FOR EXCAVATION  
1-800-892-0123  
OR 811

**PROJECT ENGINEER : JOE KANNEL**  
**UNIT CHIEF : MICHELE LINDEMANN**  
  
DISTRICT 3 NO. (815) 434-6131  
**CONTRACT NO. 66805**



RR OMISSION: STA. 1648+97.87 TO 1649+06.33  
RR OMISSION: STA. 57+42.9 TO 57+63.2  
SN 050-0033 OMISSION 146+24.63 TO 150+02.79

**STATION EQUATIONS**  
1649+06.33 BK = 0+99 AH  
67+18 BK TO 103+41 AH  
113+35 BK = 113+74 AH  
145+75.5 BK = 145+75 AH

GROSS LENGTH = 23,422.23 FT. = 4.436 MI.  
NET LENGTH = 23,015.31 FT. = 4.359 MI.

**URBAN OTHER PRINCIPAL ARTERIAL**

2008 ADT = 18,400  
P.V. = 89.6% S.U. = 8.6% M.U. = 1.8%

STATE OF ILLINOIS  
DEPARTMENT OF TRANSPORTATION  
DIVISION OF HIGHWAYS

SUBMITTED \_\_\_\_\_ 20 \_\_\_\_\_

*George Ryan*  
DEPUTY DIRECTOR OF HIGHWAYS, REGION ENGINEER

*May 9, 2008*  
*Eric E. Harnett*  
ENGINEER OF DESIGN AND ENVIRONMENT

*May 9, 2008*  
*Christine M. Reed*  
DIRECTOR OF HIGHWAYS, CHIEF ENGINEER

**PRINTED BY THE AUTHORITY**  
**OF THE STATE OF ILLINOIS**

PLOT DATE = Mar 21, 2008 - 01:16:05 PM  
FILE NAME = c:\projects\66805\66805-sht-cover.dgn  
PLOT SCALE = 47.8261 / IN.  
USER NAME = carpenterd

## GENERAL NOTES

THE THICKNESS OF HMA SHOWN ON THE PLANS IS THE NOMINAL THICKNESS. DEVIATIONS FROM THE NOMINAL THICKNESS WILL BE PERMITTED WHEN SUCH DEVIATIONS OCCUR DUE TO IRREGULARITIES IN THE EXISTING SURFACE OR BASE ON WHICH THE HMA IS PLACED.

THE HMA SURFACE OF ALL MAILBOX TURNOUTS, PRIVATE ENTRANCES, COMMERCIAL ENTRANCES, AND SIDE ROADS SHALL BE MADE NEATLY, IN A WORKMANLIKE MANNER, AND SHALL ACCURATELY CONFORM TO THE SHAPES AND DIMENSIONS SHOWN ON THE PLAN DETAILS. IF REQUIRED BY THE ENGINEER, THE CONTRACTOR SHALL BE REQUIRED TO SAW CUT THE HMA SURFACE TO CONFORM TO THE SHAPES AND DIMENSIONS SHOWN ON THE PLAN DETAILS. THIS WORK SHALL BE INCLUDED IN THE COST OF THE HMA SURFACE.

THE ENGINEER WILL BE THE SOLE JUDGE CONCERNING CURING TIME FOR THE VARIOUS HMA LIFTS.

ON EXISTING PAVEMENT WHICH MAY BE SUPERELEVATED, THE NEW HMA PAVEMENT SHALL BE BUILT WITH THE SAME SUPERELEVATION UNLESS NEW SUPERELEVATION RATES ARE GIVEN ON THE PLANS.

ANY REFERENCE TO A STANDARD IN THESE PLANS SHALL BE INTERPRETED TO MEAN THE EDITION AS INDICATED BY THE SUBNUMBER SHOWN IN THE LIST OF STANDARDS OR THE COPY INCLUDED IN THESE PLANS.

THE FOLLOWING RATES OF APPLICATION HAVE BEEN USED IN CALCULATING PLAN QUANTITIES:

GRANULAR MATERIALS	2.05	TONS / CU YD
BITUMINOUS MAT PRIME COAT	0.08	GAL / SQ YD OR
	0.375	GAL / SQ YD
AGGREGATE PRIME COAT	0.002	TONS / SQ YD
HMA RESURFACING	112	LBS / SQ YD / IN
SHORT TERM PAVEMENT MARKING	10	FT /100 FT OF APPLICATION
MIX FOR CRACKS, JTS & FLGWYS	0.0003	TONS / SQ YD
LEVEL BINDER (HAND METHOD)	0.0005	TONS / SQ YD

ALL DAMAGE TO DEPARTMENT OWNED UNDERGROUND FACILITIES, CAUSED BY THE CONTRACTOR SHALL BE REPAIRED TO THE SATISFACTION OF THE DEPARTMENT AT THE CONTRACTOR'S EXPENSE. THIS SHALL INCLUDE ALL TEMPORARY REPAIRS REQUIRED TO KEEP THE FACILITY OPERATIONAL WHILE MATERIAL IS BEING OBTAINED TO MAKE PERMANENT REPAIRS. SPLICING OF ELECTRIC CABLE SHALL NOT BE ALLOWED. ELECTRIC CABLE SHALL BE REPLACED FROM POLE TO POLE OR CONTROLLER.

TEMPORARY PAVEMENT MARKING PAINT SHALL BE APPLIED TO ALL MILLED AND LEVELING BINDER SURFACES.

## STANDARDS

000001-05	STANDARD SYMBOLS, ABBREVIATIONS AND PATTERNS
001006	DECIMAL OF AN INCH AND OF A FOOT
635006-02	REFLECTOR AND TERMINAL MARKER PLACEMENT
667101	PERMANENT SURVEY MARKERS
701006-02	OFF-ROAD OPERATIONS 2L, 2W, 4.5 m (15') TO 600 mm (24") FROM PAVEMENT EDGE
701301-02	LANE CLOSURE, 2L, 2W, SHORT TIME OPERATIONS
701306-01	LANE CLOSURE, 2L, 2W, SLOW MOVING OPERATIONS DAY ONLY, FOR SPEEDS $\geq$ 45 MPH
701311-02	LANE CLOSURE, 2L, 2W, MOVING OPERATIONS - DAY ONLY
701426-02	LANE CLOSURE, MULTILANE INTERMITTENT OR MOVING OPERATION, FOR SPEEDS $\geq$ 45 MPH
701601-05	URBAN LANE CLOSURE, MULTILANE, 1W OR 2W WITH NONTRAVERSABLE MEDIAN
701602-03	URBAN LANE CLOSURE, MULTILANE, 2W WITH BIDIRECTIONAL LEFT TURN LANE
701606-05	URBAN LANE CLOSURE, MULTILANE, 2W WITH MOUNTABLE MEDIAN
701701-05	URBAN LANE CLOSURE, MULTILANE INTERSECTION
701901	TRAFFIC CONTROL DEVICES
780001-01	TYPICAL PAVEMENT MARKINGS
781001-02	TYPICAL APPLICATIONS RAISED REFLECTIVE PAVEMENT MARKERS
857001	STANDARD PHASE DESIGNATION DIAGRAMS AND PHASE SEQUENCES
886001	DETECTOR LOOP INSTALLATIONS
886006	TYPICAL LAYOUT FOR DETECTION LOOPS

STATE OF ILLINOIS  
DEPARTMENT OF TRANSPORTATION  
DISTRICT THREE

PREPARED BY: *Paul Parrell*  
DISTRICT STUDIES & PLANS ENGINEER

DATE: 3/21/08

EXAMINED BY: *Harb Jung*  
DISTRICT CONSTRUCTION ENGINEER

*Jung*  
DISTRICT MATERIALS ENGINEER

*Bruce Tucker*  
DISTRICT OPERATIONS ENGINEER

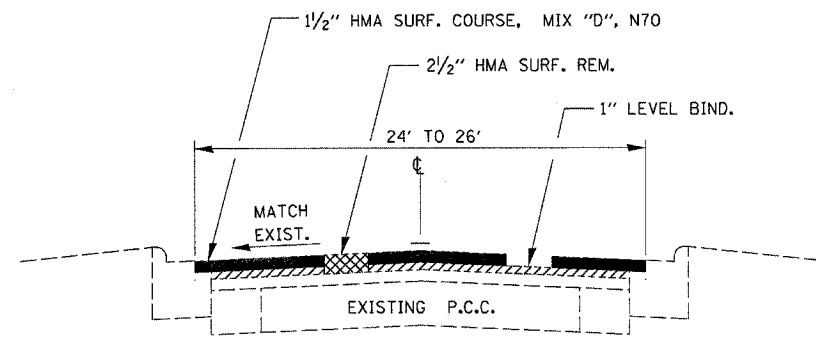
FILE NAME =	USER NAME = carpentardj	DESIGNED -	REVISED -	<b>STATE OF ILLINOIS DEPARTMENT OF TRANSPORTATION</b>	<b>GENERAL NOTES</b>	F.A.P. RTE:	SECTION	COUNTY	TOTAL SHEETS	SHEET NO.
ci:\projects\4366805\4366805-sht-cover.dgn		DRAWN -	REVISED -			623/790	(30,30X-1,2)RS-3&E)RS-1	LASALLE	24	2
		CHECKED -	REVISED -			SCALE:	SHEET NO. OF SHEETS STA.	FED. ROAD DIST. NO.	ILLINOIS FED. AID PROJECT	CONTRACT NO. 66805
		DATE -	REVISED -							

SUMMARY OF QUANTITIES			URBAN 80% FED. 20% ST.
CODE NO.	CONSTRUCTION CODE TYPE: ITEM	UNIT	I000 TOTAL QUANTITY
40600115	POLYMERIZED BITUMINOUS MATERIALS (PRIME COAT)	GALLON	21380
40600300	AGGREGATE (PRIME COAT)	TON	535
40600400	MIXTURE FOR CRACKS, JOINTS, AND FLANGEWAYS	TON	40
40600535	LEVELING BINDER (HAND METHOD), N70	TON	134
40600635	LEVELING BINDER (MACHINE METHOD), N70	TON	7483
40600895	CONSTRUCTING TEST STRIP	EACH	1
40600990	TEMPORARY RAMP	SQ YD	2154
40603340	HOT-MIX ASPHALT SURFACE COURSE, MIX "D", N70	TON	11225
44000159	HOT-MIX ASPHALT SURFACE REMOVAL, 2 1/2"	SQ YD	133625
48101200	AGGREGATE SHOULDERS, TYPE B	TON	452
56109210	WATER VALVES TO BE ADJUSTED	EACH	5
60255500	MANHOLES TO BE ADJUSTED	EACH	3
60255800	MANHOLES TO BE ADJUSTED WITH NEW TYPE 1 FRAME, CLOSED LID	EACH	3
60403800	LIDS, TYPE 1, CLOSED LID	EACH	6
66700095	PERMANENT SURVEY MARKERS	EACH	2
67000400	ENGINEER'S FIELD OFFICE, TYPE A	CAL MO	4
67100100	MOBILIZATION	L SUM	1
70100460	TRAFFIC CONTROL AND PROTECTION, STANDARD 701306	L SUM	1
70102625	TRAFFIC CONTROL AND PROTECTION, STANDARD 701606	L SUM	1
70102630	TRAFFIC CONTROL AND PROTECTION, STANDARD 701601	L SUM	1
70102632	TRAFFIC CONTROL AND PROTECTION, STANDARD 701602	L SUM	1
70102635	TRAFFIC CONTROL AND PROTECTION, STANDARD 701701	L SUM	1

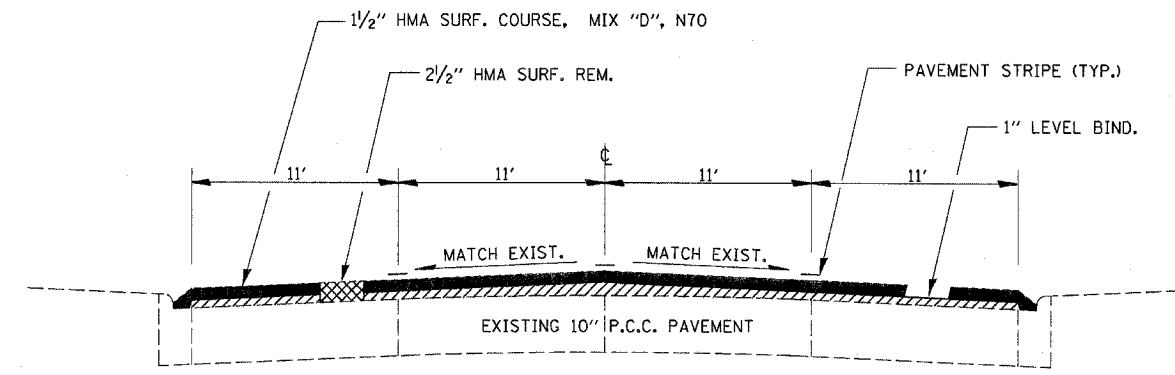
SUMMARY OF QUANTITIES (CONTINUED)			URBAN 80% FED. 20% ST.
CODE NO.	CONSTRUCTION CODE TYPE: ITEM	UNIT	I000 TOTAL QUANTITY
70300100	SHORT-TERM PAVEMENT MARKING	FOOT	10123
70300210	TEMPORARY PAVEMENT MARKING - LETTERS AND SYMBOLS	SQ FT	5411
70300220	TEMPORARY PAVEMENT MARKING - LINE 4"	FOOT	190752
70300240	TEMPORARY PAVEMENT MARKING - LINE 6"	FOOT	34434
70300250	TEMPORARY PAVEMENT MARKING - LINE 8"	FOOT	14895
70300260	TEMPORARY PAVEMENT MARKING - LINE 12"	FOOT	2007
70300280	TEMPORARY PAVEMENT MARKING - LINE 24"	FOOT	2115
70301000	WORK ZONE PAVEMENT MARKING REMOVAL	SQ FT	1125
78000100	THERMOPLASTIC PAVEMENT MARKING - LETTERS AND SYMBOLS	SQ FT	1804
78000200	THERMOPLASTIC PAVEMENT MARKING - LINE 4"	FOOT	63584
78000400	THERMOPLASTIC PAVEMENT MARKING - LINE 6"	FOOT	2314
78000500	THERMOPLASTIC PAVEMENT MARKING - LINE 8"	FOOT	4965
78000600	THERMOPLASTIC PAVEMENT MARKING - LINE 12"	FOOT	669
78000650	THERMOPLASTIC PAVEMENT MARKING - LINE 24"	FOOT	705
78004230	PREFORMED PLASTIC PAVEMENT MARKING, TYPE B - INLAID - LINE 6"	FOOT	9164
78100100	RAISED REFLECTIVE PAVEMENT MARKER	EACH	904
78200300	PRISMATIC CURB REFLECTOR	EACH	53
78300200	RAISED REFLECTIVE PAVEMENT MARKER REMOVAL	EACH	904
88600100	DETECTOR LOOP, TYPE I	FOOT	4698
X0325702	NIGHTTIME WORK ZONE LIGHTING	L SUM	1
X8860100	LOOP DETECTOR TESTING	EACH	5
Z0024430	FLAGGER	HOURL	100
Z0048665	RAILROAD PROTECTIVE LIABILITY INSURANCE	L SUM	1
Z0076600	TRAINNEES	HOURL	1000

† Y080  
• SPECIALTY ITEMS

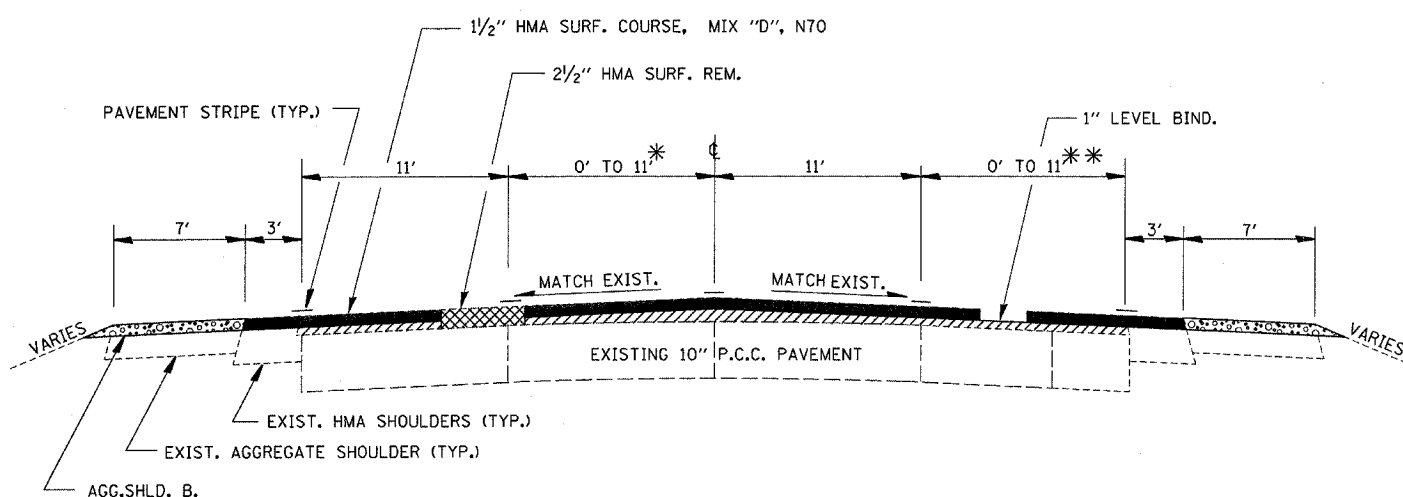
FILE NAME =	USER NAME = aarpenterdj	DESIGNED -	REVISED -	<b>STATE OF ILLINOIS DEPARTMENT OF TRANSPORTATION</b>	<b>SUMMARY OF QUANTITIES</b>			F.A.P. RTE.	SECTION	COUNTY	TOTAL SHEETS	SHEET NO.			
o:\projects\43668805\43668805 - sht-soq.dwg		DRAWN -	REVISED -		SCALE:	SHEET NO.	OF	SHEETS	STA.	TO STA.	623/790	(30,30X-1,2)RS-3&E)RS-1	LASALLE	24	3
		CHECKED -	REVISED -												
		DATE -	REVISED -												
		PLOT SCALE = 1/8" = 1' / IN.													
		PLOT DATE = Mar 21, 2009 - 02:35:51 PM													
											CONTRACT NO. 66805				
											FED. ROAD DIST. NO. ILLINOIS FED. AID PROJECT				



STATION 1615+42.7 TO STATION 1648+97.87

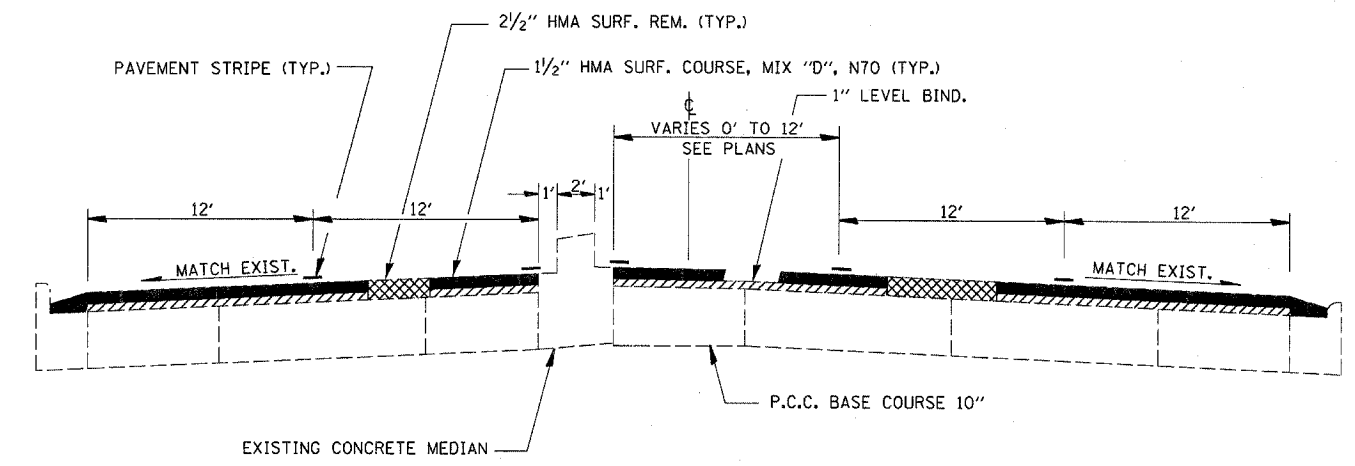


STATION 35+00 TO STATION 113+74



STATION 0+99 TO STATION 35+00

\* VARIES STA. 2+27 TO 6+17  
 \*\* VARIES STA. 2+27 TO 4+37



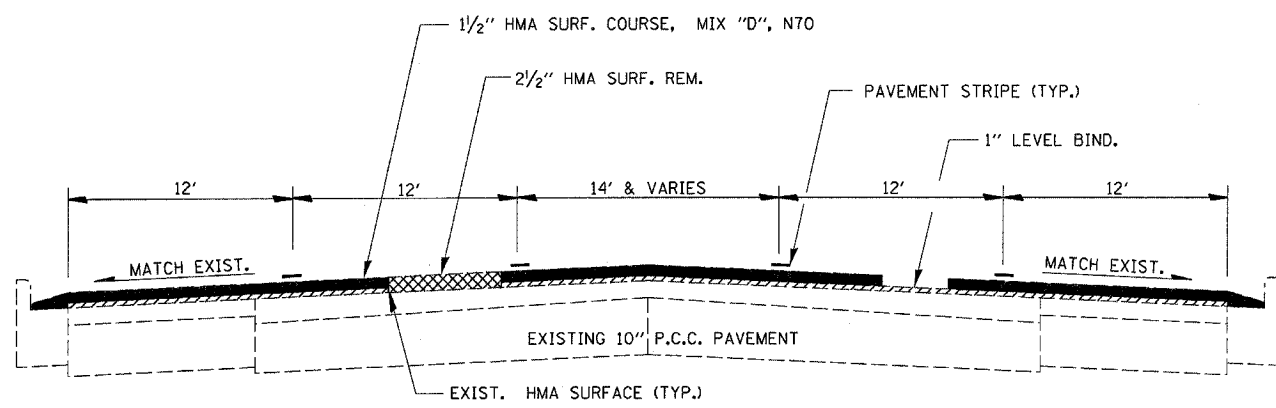
STATION 113+74 TO STATION 136+40

MIX DESIGN						
MIX	PG GRADE	MAX % RAP ALLOWABLE*	DESIGN AIR VOIDS	MIX COMPOSITION	FRICITION AGG	DENSITY CONTROL
HOT-MIX ASPHALT SURFACE COURSE	PG 64-22	10%	4.0% @N70	IL 12.5 OR IL 9.5	MIXTURE D	CORRELATION
LEVELING BINDER	PG 64-22	15%	4.0% @N70	IL 9.5		SATISFACTION OF ENGINEER

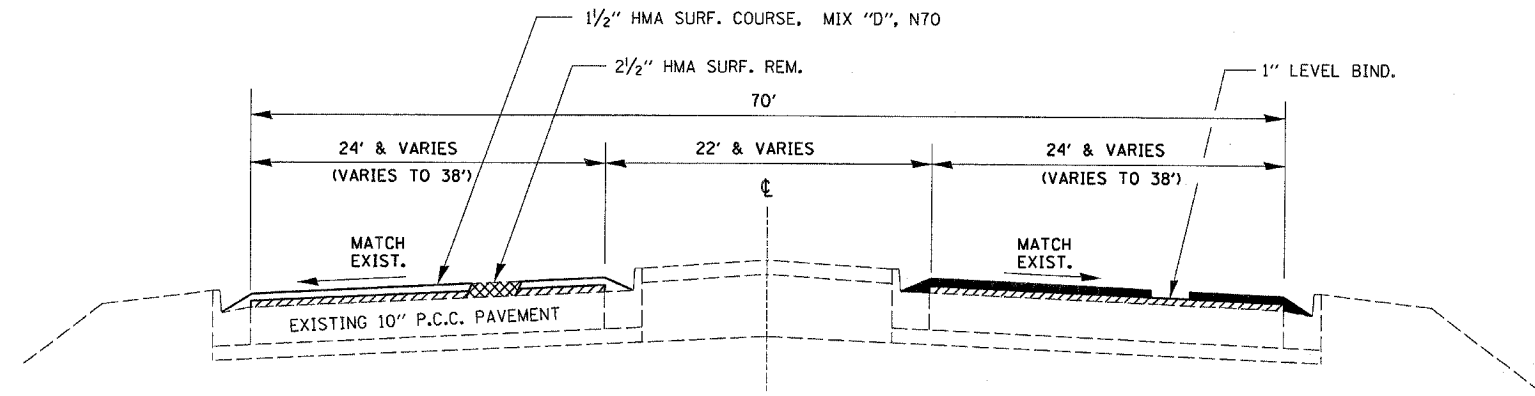
\* IF RAP PERCENTAGE IS DIFFERENT THAN LISTED ABOVE, THE PG GRADE MAY NEED TO BE ADJUSTED. THIS WILL BE DETERMINED BY THE ENGINEER.

OMISSIONS  
 RR - STA. 57+42.9 TO STA. 57+63.2  
 RR - STA. 1648+97.87 TO 1649+06.33  
 SN 050-0033 - 146+24.63 TO STA. 150+02.79

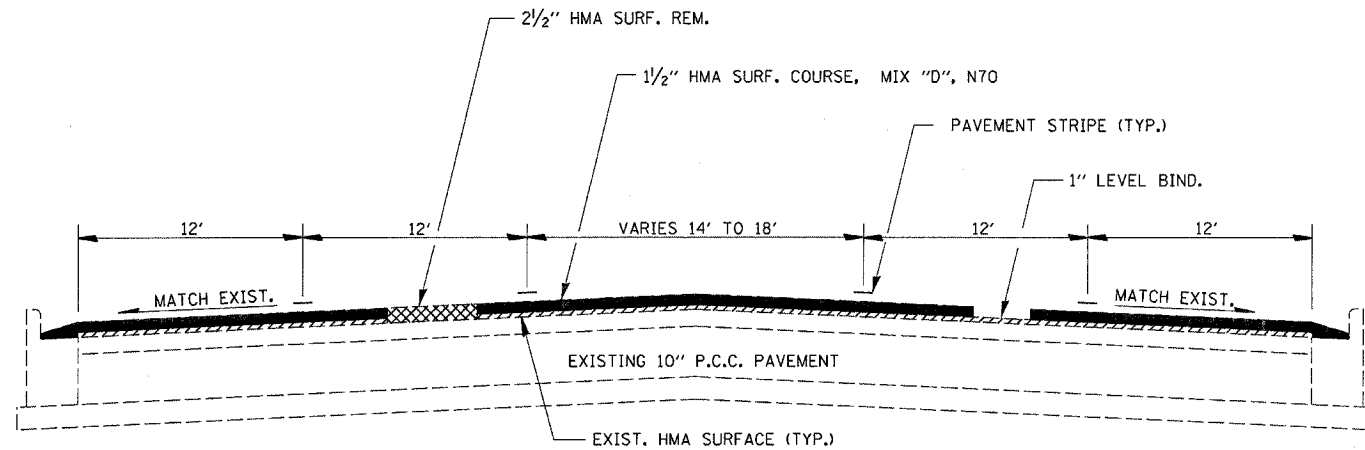
STATION EQUATIONS  
 1649+06.33 BK = 0+99 AH  
 67+18 BK = 103+41 AH  
 113+35 BK = 113+74 AH  
 145+75.5 = 145+75 AH



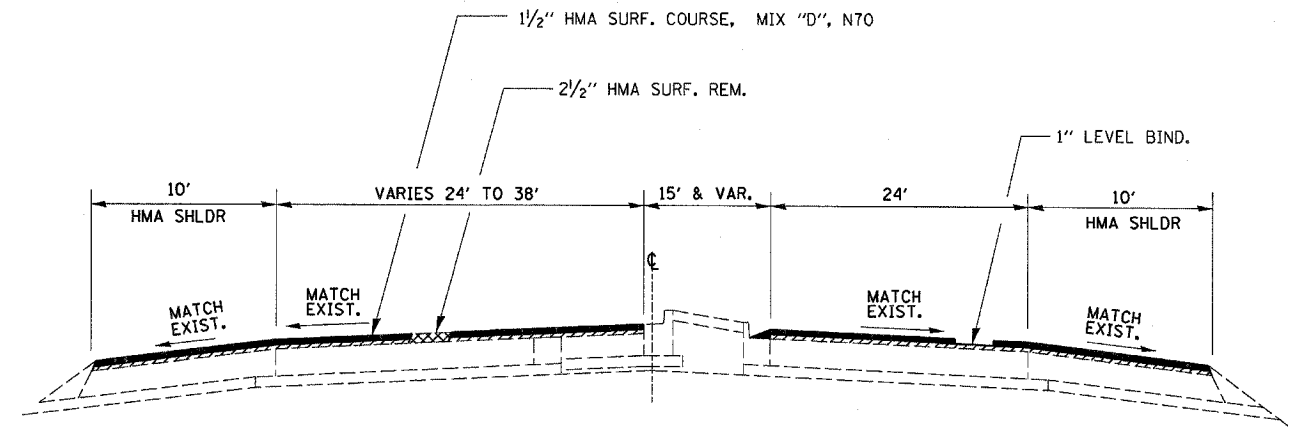
STATION 136+40 TO STATION 142+00



STATION 150+02.79 TO STATION 226+74



STATION 142+00 TO STATION 146+25.33



STATION 226+74 TO STATION 231+45

**OMISSIONS**  
 RR - STA. 57+42.9 TO STA. 57+63.2  
 RR - STA. 1648+97.87 TO 1649+06.33  
 SN 050-0033 - 146+24.63 TO STA. 150+02.79

**STATION EQUATIONS**  
 1649+06.33 BK = 0+99 AH  
 67+18 BK = 103+41 AH  
 113+35 BK = 113+74 AH  
 145+75.5 = 145+75 AH

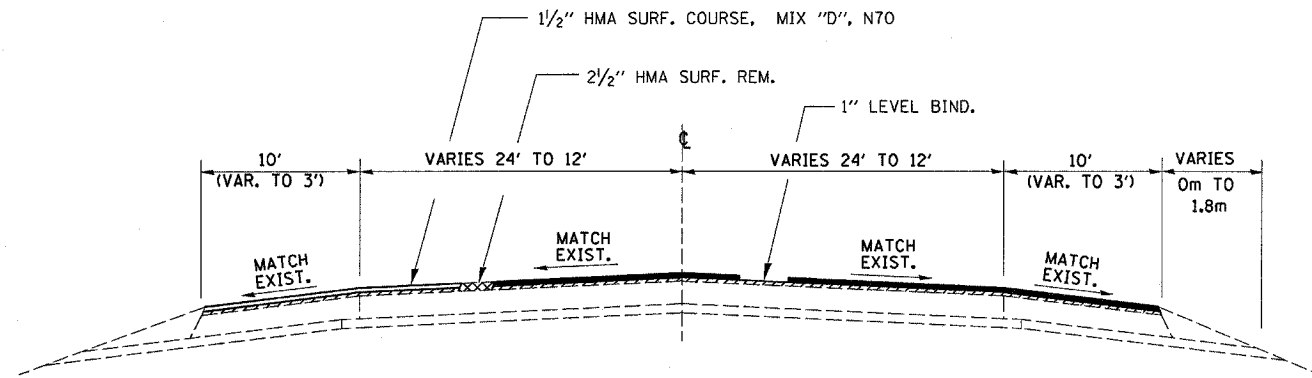
FILE NAME =	USER NAME = carpenterdj	DESIGNED -	REVISED -
ci\projects\1366805\1366805-sht-details.dgn		DRAWN -	REVISED -
PLOT SCALE = 20,0000' / IN.		CHECKED -	REVISED -
PLOT DATE = Mar 21, 2008 - 02:35:14 PM		DATE -	REVISED -

STATE OF ILLINOIS  
 DEPARTMENT OF TRANSPORTATION

TYPICAL SECTIONS

SCALE:	SHEET NO.	OF SHEETS	STA.	TO STA.
--------	-----------	-----------	------	---------

F.A.P. RTE.	SECTION	COUNTY	TOTAL SHEETS	SHEET NO.
623/190	(30,30X1,2)RS-3&(E)RS-1	LASALLE	24	5
FED. ROAD DIST. NO.			ILLINOIS FED. AID PROJECT	
CONTRACT NO. 66805				



STATION 231+45 TO STATION 238+20

**OMISSIONS**  
 RR - STA. 57+42.9 TO STA. 57+63.2  
 RR - STA. 1648+97.87 TO 1649+06.33  
 SN 050-0033 - 146+24.63 TO STA. 150+02.79

**STATION EQUATIONS**  
 1649+06.33 BK = 0+99 AH  
 67+18 BK = 103+41 AH  
 113+35 BK = 113+74 AH  
 145+75.5 = 145+75 AH

FILE NAME =	USER NAME = carpenterdj	DESIGNED -	REVISED -	<b>STATE OF ILLINOIS DEPARTMENT OF TRANSPORTATION</b>	<b>TYPICAL SECTIONS</b>	F.A.P. RTE.	SECTION	COUNTY	TOTAL SHEETS	SHEET NO.
c:\projects\4366805\4366805-sht-details.dgn	DRAWN -	REVISED -	623/790			(30,30X1,2)RS-3&(E)RS-1	LASALLE	24	6	
PLOT SCALE = 20.0000' / IN.	CHECKED -	REVISED -	CONTRACT NO. 66805							
PLOT DATE = Mar 21, 2008 - 02:35:06 PM	DATE -	REVISED -	SCALE: SHEET NO. OF SHEETS STA. TO STA. FED. ROAD DIST. NO. ILLINOIS FED. AID PROJECT							

**PAVING SCHEDULE**

LOCATION	LENGTH	AVG PVMT WIDTH	HMA PVMT AREA	HMA SURF CSE 1 1/2"	HMA LEVEL BIND 1"	HMA SURF REM 2 1/2"	AGG SHLDR TY B	TEMP RAMPS	POLY BIT MAT (PR CT)	AGG (PR CT)	MIX FOR CRACKS, JOINTS & FLANGEWAYS	LEVEL BINDER (H.M.)
	FOOT	FOOT	SQ YD	TON	TON	SQ YD	TON	SQ YD	GALLON	TON	TON	TON
<b>US 6 &amp; IL 71:</b>												
1615+42.7 TO 1648+97.87	3355.17	25	9320	782.9	521.9	9320		123.9	1491.2	37.3	2.8	9.3
RR OMISSION -STA 1648+97.87 TO 1649+06.33												
0+99 TO 2+27	128	28	398	33.4	22.3	398	17	12.2	63.7	1.6	0.1	0.4
2+27 TO 4+37	210	56	1307	109.8	73.2	1307	28		209.1	5.2	0.4	1.3
4+37 TO 6+17	180	47.5	950	79.8	53.2	950	24		152.0	3.8	0.3	1.0
6+17 TO 35+00	2883	50	16017	1345.4	896.9	16017	383	75.0	2562.7	64.1	4.8	16.0
35+00 TO 57+42	2242	46	11459	962.6	641.7	11459		411.4	1833.4	45.8	3.4	11.5
RR OMISSION -STA 57+42.9 TO 57+63.2												
57+63.2 TO 67+18	954.8	46	4880	409.9	273.3	4880		178.2	780.8	19.5	1.5	4.9
103+41 TO 105+78	237		1463	122.9	81.9	1463		58.6	234.1	5.9	0.4	1.5
105+78 TO 110+00	422	61	2860	240.2	160.1	2860		129.4	457.6	11.4	0.9	2.9
110+00 TO 112+45	245		1838	154.4	102.9	1838		70.8	294.1	7.4	0.6	1.8
112+45 TO 113+35	90	64	546	45.9	30.6	546			87.4	2.2	0.2	0.5
113+74 TO 113+96	22	65	64	5.4	3.6	64			10.2	0.3	0.0	0.1
113+96 TO 127+58	1362	64	9231	775.4	516.9	9231		280.1	1477.0	36.9	2.8	9.2
127+58 TO 142+00	1442	64	9766	820.3	546.9	9766		193.5	1562.6	39.1	2.9	9.8
142+00 TO 145+75.5	375.5	66	2754	231.3	154.2	2754		124.0	440.6	11.0	0.8	2.8
145+75 TO 146+24.63	49.63	66	364	30.6	20.4	364		124.0	58.2	1.5	0.1	0.4
SN 050-0033 - OMISSION STA 146+24.63 TO 150+02.79												
150+02.79 TO 238+20	8817.21		56057	4708.8	3139.2	56057		340.0	8969.1	224.2	16.8	56.1
<b>COLUMBUS ST:</b>												
NORRIS DR. SOUTH TO CSX RR			4351	365.5	243.7	4351		33.3	696.2	17.4	1.3	4.4
<b>TOTAL</b>				11224.5	7482.9	133625	452	2154.4	21380	534.6	40.1	133.9

**REFLECTOR SCHEDULE**

LOCATION	RAISED REFLECTIVE PAVEMENT MARKERS			RAISED REFLECTIVE PVMT MARK REM	PRISMATIC CURB REFLECTORS
	ONE-WAY AMBER	TWO-WAY AMBER	ONE-WAY CRYSTAL		
	EACH	EACH	EACH		
<b>US 6 &amp; IL 71</b>					
STA. 1615+42.7 TO STA. 1648+97.87		42		42	
STA. 0+99 TO STA. 6+95.47	20	2	7	29	
STA. 6+95.47 TO STA. 15+00		38	43	81	
STA. 15+00 TO STA. 51+00		165	180	345	
STA. 51+00 TO STA. 55+00		16	16	32	
STA. 55+00 TO STA. 65+54.60		45	45	90	
STA. 65+54.60 TO STA. 105+78.20	10	5	16	31	
STA. 105+78.20 TO STA. 110+00	13		23	36	2
STA. 110+00 TO STA. 113+96			25	25	9
STA. 113+96 TO STA. 118+24			20	20	8
STA. 118+24 TO STA. 122+28			20	20	8
STA. 122+28 TO STA. 127+57.50			30	30	10
STA. 127.57.50 TO STA. 131+71			21	21	9
STA. 131+71 TO STA. 135+73			19	19	7
STA. 135+73 TO STA. 141+84.70		22	22	44	
STA. 141+84.70 TO STA. 146+24.63	6	11	22	39	
SN 050-0033 - OMISSION					
150+02.79 TO 238+20	4	24	558	586	
<b>COLUMBUS ST.</b>					
NORRIS DR. SOUTH TO CSX RR			30	30	14
<b>SUBTOTAL</b>	49	346	509	904	53

**PAVEMENT MARKING SCHEDULE**

LOCATION	THERMOPLASTIC PVMT MARKING		THERMOPLASTIC PVMT MARKING		PREFORMED PLASTIC PVMT MARK TY B, INLAID 6"	THERMO PVMT MARK WHITE 8"	THERMOPLASTIC PVMT MARKING		THERMO PVMT MARK WHITE 24"	THERMO PVMT MARK LETTERS & SYMBOLS SQ FT
	WHITE 4"	YELLOW 4"	WHITE 6"	YELLOW 6"			WHITE 12"	YELLOW 12"		
	FOOT	FOOT	FOOT	FOOT			FOOT	FOOT		
US 6 & IL 71										
▪ STA. 1615+42.7 TO STA. 1648+97.87		3475		684					36	61.2
STA. 0+99 TO STA. 6+95.47	1133	1866				350	13	100	33	142.5
STA. 6+95.47 TO STA. 15+00	1555	1530			291	241				81.3
STA. 15+00 TO STA. 51+00	3900	6610			1800					
STA. 51+00 TO STA. 55+00		628			157				44	
STA. 55+00 TO STA. 65+54.60		1812	453		453				132	244.8
STA. 65+54.60 TO 67+18 & STA. 103+41 TO 105+78.20		904	135		148	62		45	38	15.6
STA. 105+78.20 TO STA. 110+00		880	297		165	285			69	137.4
STA. 110+00 TO 113+35 & STA. 113+74 TO 113+96		614	185		165	373	170		47	78.0
STA. 113+96 TO STA. 118+24		580			145	245				62.4
STA. 118+24 TO STA. 122+28		610			153	253				62.4
STA. 122+28 TO STA. 127+57.50		854			214	382				62.4
STA. 127.57.50 TO STA. 131+71		702			173	200				31.2
STA. 131+71 TO STA. 135+73		558			140	240				62.4
STA. 135+73 TO STA. 141+84.70		925			231					109.2
STA. 141+84.70 TO 145+75 & STA. 145+75 TO 146+24.63		1335	275		166	283			72	62.4
SN 050-0033 - OMISSION 150+02.79 TO 238+20	17667	15446		105	4488	1516	33	128	105	265.2
COLUMBUS ST. NORRIS DR. SOUTH TO CSX RR										
			180		275	535	180		129	325.2
<b>SUBTOTAL</b>	<b>24255</b>	<b>39329</b>	<b>1525</b>	<b>789</b>	<b>9164</b>	<b>4965</b>	<b>396</b>	<b>273</b>	<b>705</b>	<b>1803.6</b>
<b>TOTAL</b>	<b>63584</b>		<b>2314</b>		<b>9164</b>	<b>4965</b>	<b>669</b>		<b>705</b>	<b>1803.6</b>

▪ PROPOSED NO PASSING ZONES SHALL BE STRIPED AS EXISTING.

MANHOLE TO BE ADJUSTED	
LOCATION	EACH
TO BE DETERMINED BY ENGINEER IN FIELD	3
<b>TOTAL</b>	<b>3</b>

LIDS, TYPE 1, CLOSED LID	
LOCATION	EACH
TO BE DETERMINED BY ENGINEER IN FIELD	6
<b>TOTAL</b>	<b>6</b>

MANHOLES TO BE ADJUSTED WITH NEW TYPE 1 FRAME, CLOSED LID	
LOCATION	EACH
TO BE DETERMINED BY ENGINEER IN FIELD	3
<b>TOTAL</b>	<b>3</b>

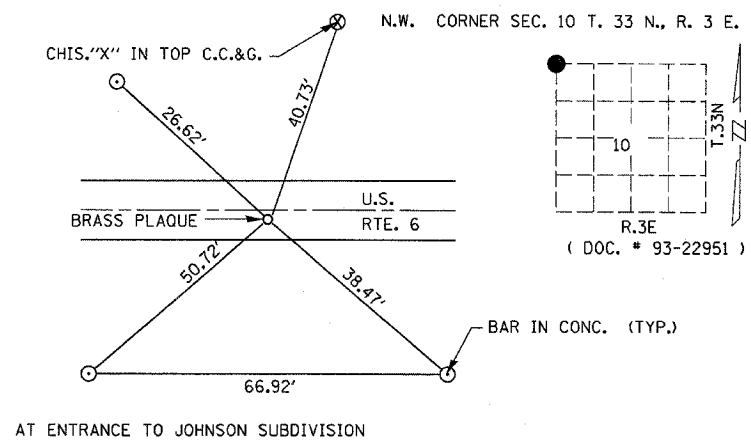
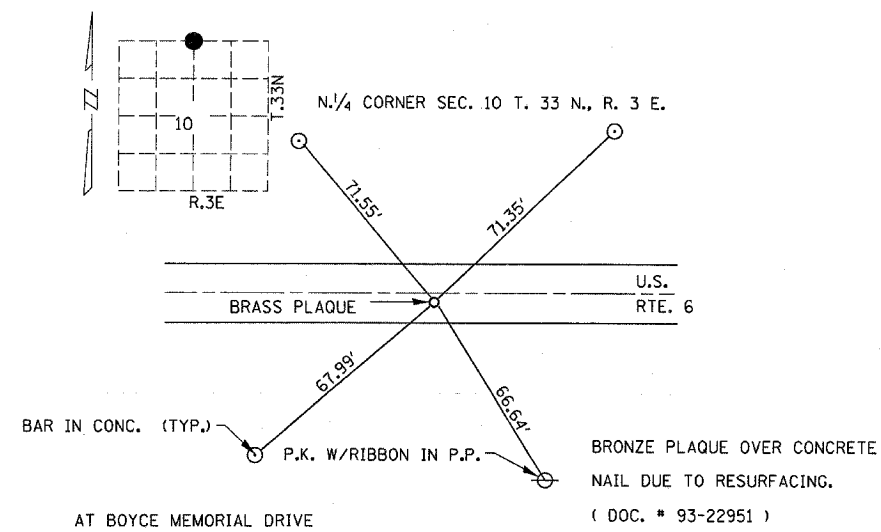
WATER VALVES TO BE ADJUSTED	
LOCATION	EACH
TO BE DETERMINED BY ENGINEER IN FIELD	5
<b>TOTAL</b>	<b>5</b>



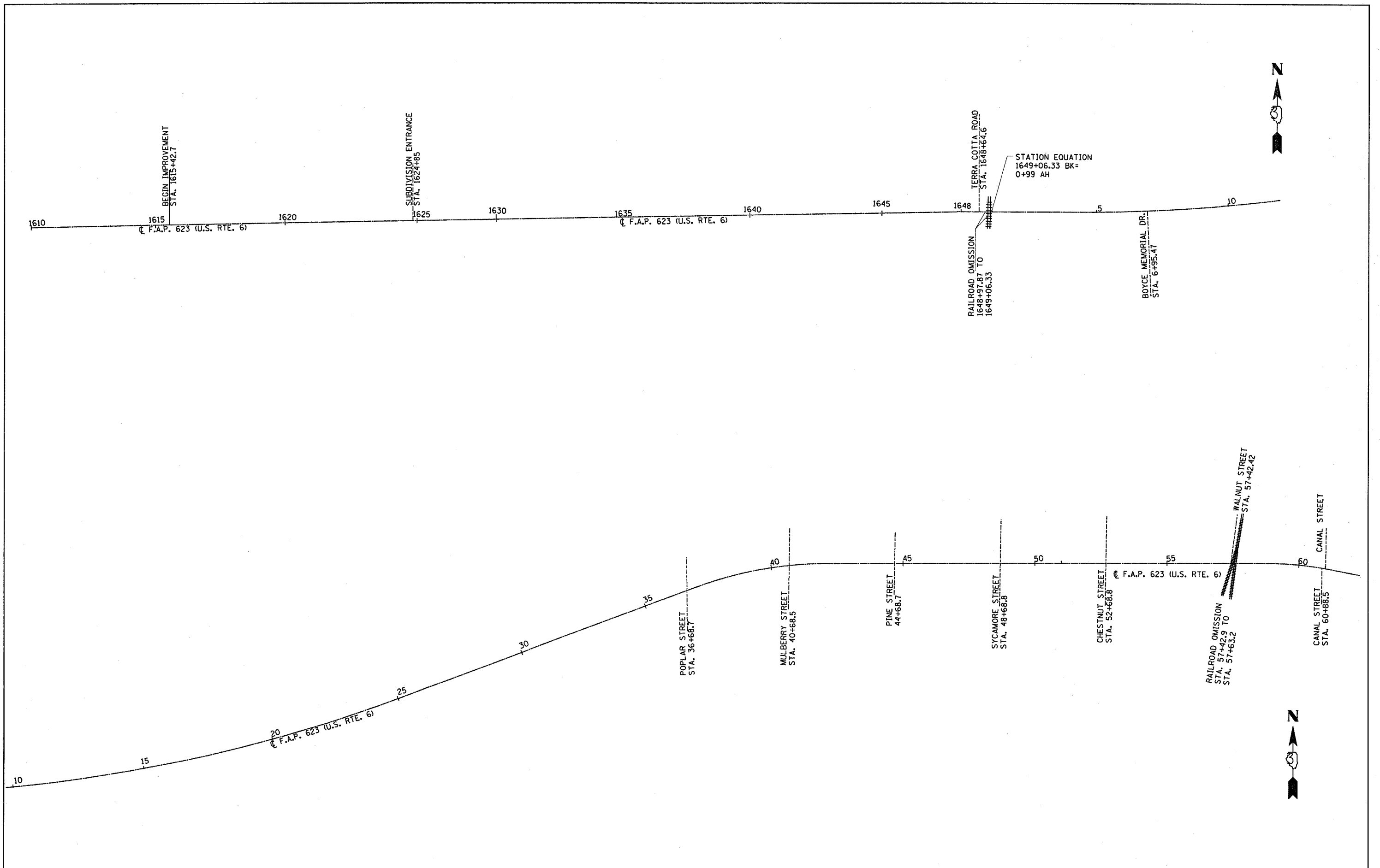
TEMPORARY PAVEMENT MARKING SCHEDULE									
LOCATION	TEMPORARY PVMT MARKING		TEMPORARY PVMT MARKING		TEMPORARY PVMT MARKING	TEMPORARY PVMT MARKING		TEMPORARY PVMT MARKING	TEMPORARY PVMT MARKING
	WHITE 4"	YELLOW 4"	WHITE 6"	YELLOW 6"	WHITE 8"	WHITE 12"	YELLOW 12"	WHITE 24"	TEMPORARY PVMT MARKING LETTERS & SYMBOLS
	FOOT	FOOT	FOOT	FOOT	FOOT	FOOT	FOOT	FOOT	SQ FT
US 6 & IL 71									
• STA. 1615+42.7 TO STA. 1648+97.87		10425	0	2052				108	183.6
STA. 0+99 TO STA. 6+95.47	3399	5598	0		1050	39	300	99	427.5
STA. 6+95.47 TO STA. 15+00	4665	4590	873		723				243.9
STA. 15+00 TO STA. 51+00	11700	19830	5400						
STA. 51+00 TO STA. 55+00		1884	471					132	
STA. 55+00 TO STA. 65+54.60		5436	2718					396	734.4
STA. 65+54.60 TO 67+18 & STA. 103+41 TO 105+78.20		2712	849		186		135	114	46.8
STA. 105+78.20 TO STA. 110+00		2640	1386		855			207	412.2
STA. 110+00 TO 113+35 & STA. 113+74 TO 113+96		1842	1050		1119	510		141	234
STA. 113+96 TO STA. 118+24		1740	435		735				187.2
STA. 118+24 TO STA. 122+28		1830	459		759				187.2
STA. 122+28 TO STA. 127+57.50		2562	642		1146				187.2
STA. 127.57.50 TO STA. 131+71		2106	519		600				93.6
STA. 131+71 TO STA. 135+73		1674	420		720				187.2
STA. 135+73 TO STA. 141+84.70		2775	693						327.6
STA. 141+84.70 TO 145+75 & STA. 145+75 TO 146+24.63		4005	1323		849			216	187.2
SN 050-0033 - OMISSION 150+02.79 TO 238+20	53001	46338	13464	315	4548	99	384	315	795.6
COLUMBUS ST. NORRIS DR. SOUTH TO CSX RR									
			1365		1605	540		387	975.6
SUBTOTAL	72765	117987	32067	2367	14895	1188	819	2115	5410.8
TOTAL	190752		34434		14895	2007		2115	5410.8

• PROPOSED NO PASSING ZONES SHALL BE STRIPED AS EXISTING.

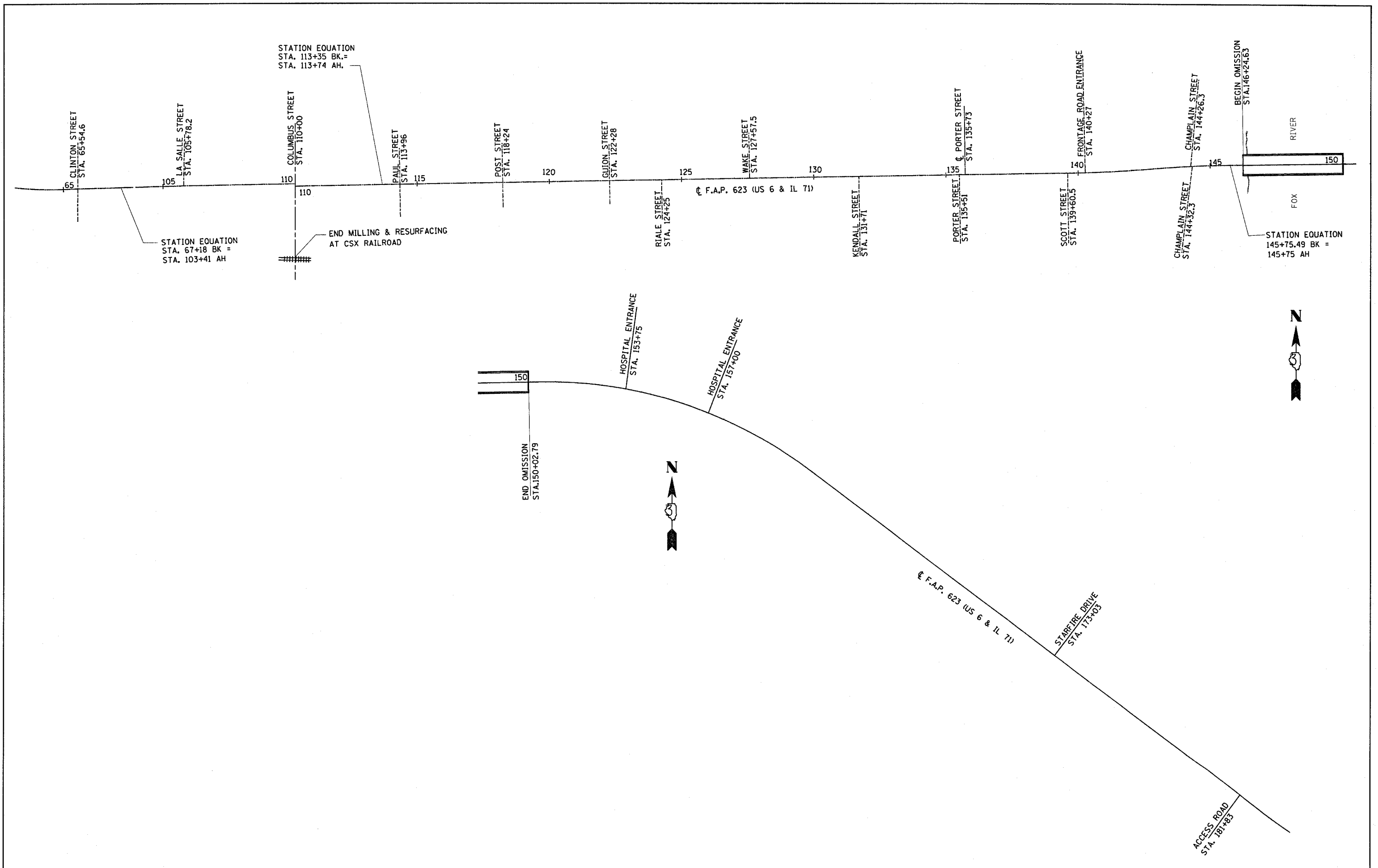
SHORT-TERM PAVEMENT MARKING SCHEDULE			
LOCATION	SHORT-TERM PAVEMENT MARKING		WORK ZONE PVMT MARKING REMOVAL
	WHITE	YELLOW	SQ FT
	FOOT	FOOT	
US 6 & IL 71			
STA. 1615+42.7 TO STA. 1648+97.87		335.5	37.3
STA. 0+99 TO STA. 6+95.47	467.7	768.3	137.3
STA. 6+95.47 TO STA. 15+00	611.0	76.5	76.4
STA. 15+00 TO STA. 51+00	720.0	330.5	116.7
STA. 51+00 TO STA. 55+00	62.8	31.4	10.5
STA. 55+00 TO STA. 65+54.60	181.1	90.6	30.2
STA. 65+54.60 TO STA. 105+78.20	117.1	81.1	22.0
STA. 105+78.20 TO STA. 110+00	557.0	78.0	70.6
STA. 110+00 TO STA. 113+96	541.0		60.1
STA. 113+96 TO STA. 118+24	270.0		30.0
STA. 118+24 TO STA. 122+28	273.0		30.3
STA. 122+28 TO STA. 127+57.50	311.1		34.6
STA. 127.57.50 TO STA. 131+71	180.2		20.0
STA. 131+71 TO STA. 135+73	267.8		29.8
STA. 135+73 TO STA. 141+84.70	92.5	428.5	57.9
STA. 141+84.70 TO STA. 146+24.63	280.9	53.4	37.1
SN 050-0033 - OMISSION 150+02.79 TO 238+20	1917.5	243.0	240.1
COLUMBUS ST. NORRIS DR. SOUTH TO CSX RR			
	755.6		84.0
SUBTOTAL	7606.3	2516.8	1124.9
TOTAL	10123.1		1124.9



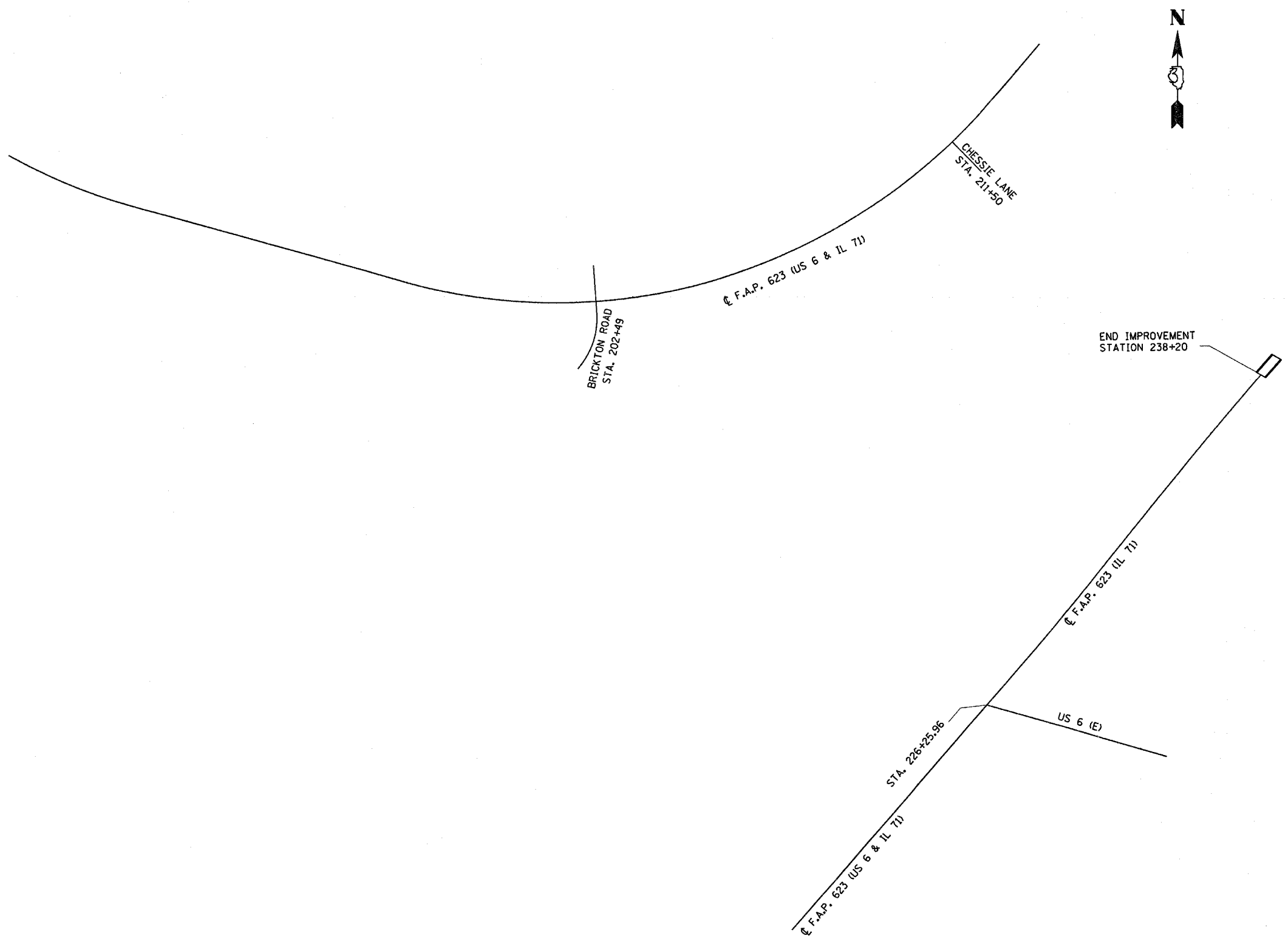
FILE NAME =	USER NAME = carpenterdj	DESIGNED -	REVISED -	<b>STATE OF ILLINOIS DEPARTMENT OF TRANSPORTATION</b>	<b>SURVEY TIES</b>				F.A.P. RTE.	SECTION	COUNTY	TOTAL SHEETS	SHEET NO.
c:\projects\j366805\j366805-sht-details.dgn		DRAWN -	REVISED -						623/790	(30,30X1,2)RS-3&(E)RS-1	LASALLE	24	10
PLOT SCALE = 20,0000' / 1".		CHECKED -	REVISED -		SCALE: SHEET NO. OF SHEETS STA. TO STA.				CONTRACT NO. 66805				
PLOT DATE = Mar 21, 2008 - 02:32:52 PM		DATE -	REVISED -		FED. ROAD DIST. NO. [ILLINOIS] FED. AID PROJECT								



FILE NAME = c:\projects\d366805\d366805-ahd-details.dgn	USER NAME = carpenterdj	DESIGNED -	REVISED -	<b>STATE OF ILLINOIS DEPARTMENT OF TRANSPORTATION</b>	<b>PROJECT LAYOUT</b>			F.A. RTE.	SECTION	COUNTY	TOTAL SHEETS	SHEET NO.
	PLOT SCALE = 50.0000' / IN.	DRAWN -	REVISED -					623/790	(30,30x-1,2RS-3&IERS-1	LASALLE	24	11
	PLOT DATE = Mar 21, 2008 - 02:32:43 PM	CHECKED -	REVISED -					CONTRACT NO.				
				SCALE:		SHEET NO. OF SHEETS	STA. TO STA.	FED. ROAD DIST. NO. ILLINOIS FED. AID PROJECT				



FILE NAME = c:\projects\366805\366805-sht-details.dgn	USER NAME = carpenterdj	DESIGNED -	REVISED -	<b>STATE OF ILLINOIS DEPARTMENT OF TRANSPORTATION</b>	<b>PROJECT LAYOUT</b>			F.A. RTE. 623/790	SECTION 130,30x-1,2/RS-3&E/RS-1	COUNTY LASALLE	TOTAL SHEETS 24	SHEET NO. 12	
PLDT SCALE = 50,0000' / IN.	CHECKED -	REVISED -	REVISED -		SCALE:	SHEET NO.	OF	SHEETS	STA.	TO	STA.	FED. ROAD DIST. NO.	ILLINOIS FED. AID PROJECT
PLDT DATE = Mar 21, 2008 - 02:32:36 PM	DATE -	REVISED -	REVISED -									CONTRACT NO.	



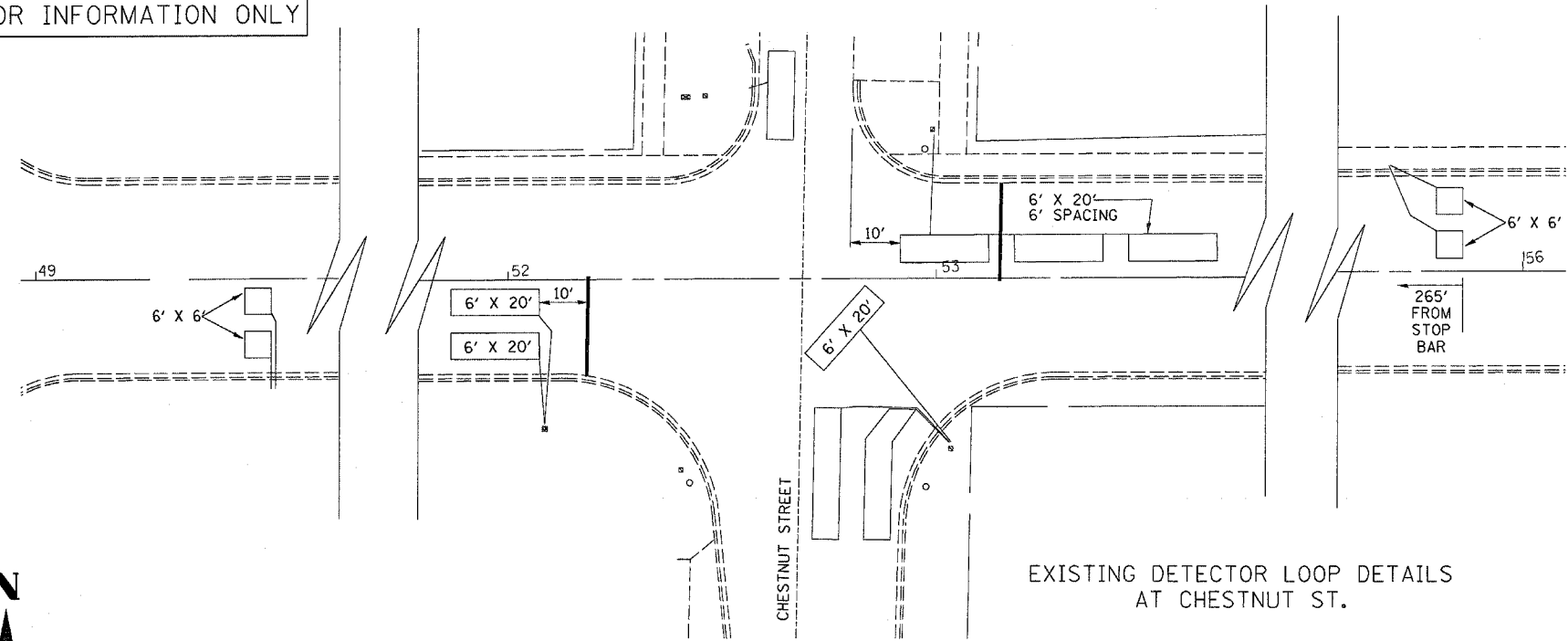
FILE NAME = c:\projects\d366885\d366885-sht-detail.dgn	USER NAME = carpenterdj	DESIGNED -	REVISED -
		DRAWN -	REVISED -
		CHECKED -	REVISED -
		DATE -	REVISED -
	PLOT SCALE = 50.0000' / IN.		
	PLOT DATE = Mar 21, 2008 - 02:32:22 PM		

**STATE OF ILLINOIS  
DEPARTMENT OF TRANSPORTATION**

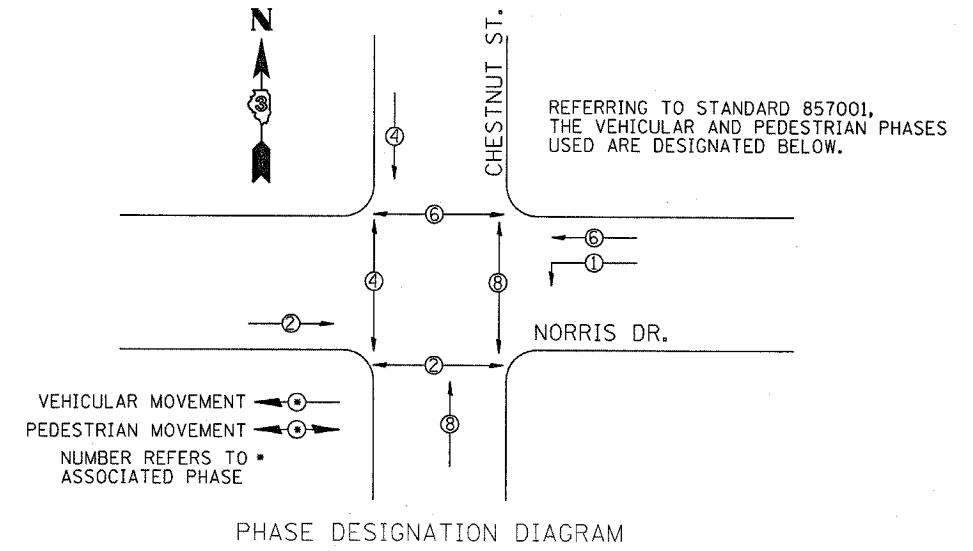
<b>PROJECT LAYOUT</b>			
SCALE:	SHEET NO.	OF SHEETS	STA. TO STA.

F.A. RTE. 623/790	SECTION (30,30x-1,2RS-3&EHS-1)	COUNTY LASALLE	TOTAL SHEETS 24	SHEET NO. 13
FED. ROAD DIST. NO.		ILLINOIS FED. AID PROJECT		
CONTRACT NO.				

FOR INFORMATION ONLY



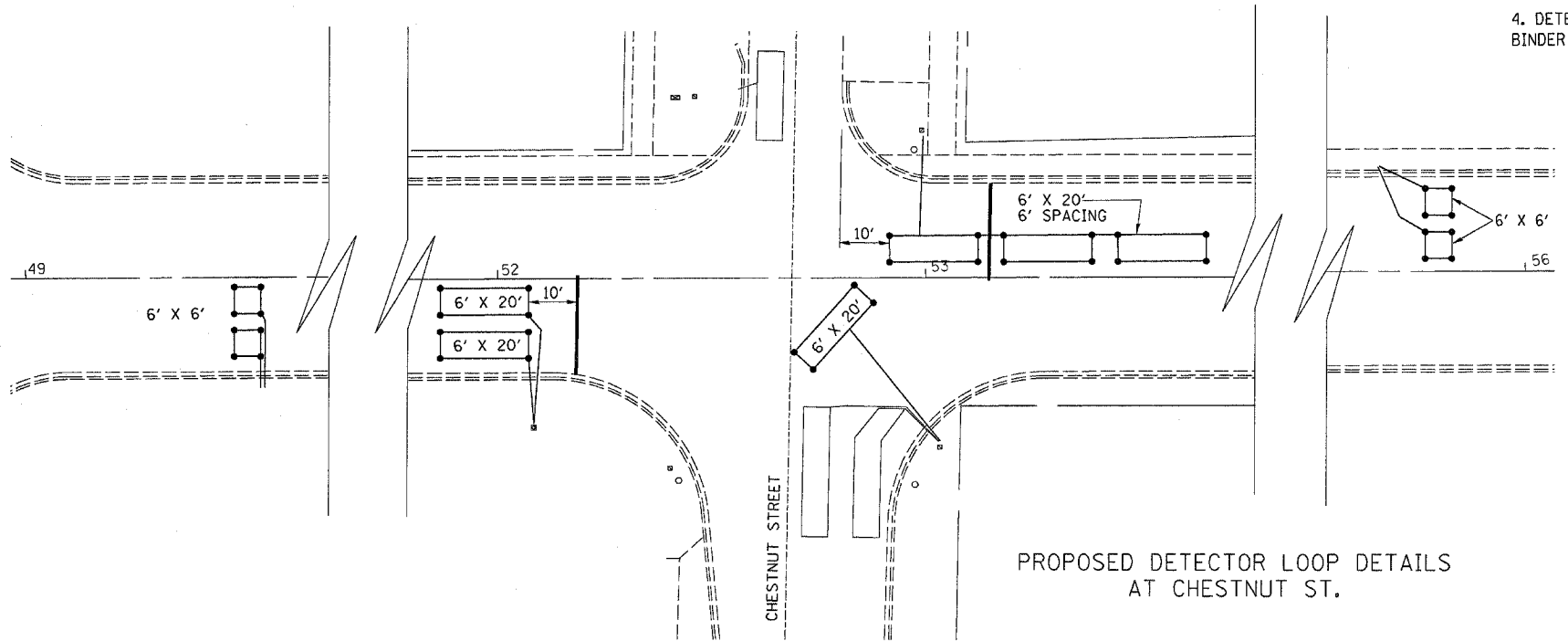
EXISTING DETECTOR LOOP DETAILS AT CHESTNUT ST.



PHASE DESIGNATION DIAGRAM

- NOTES:
- PLEASE CONTACT TRAFFIC SIGNAL SECTION FOR PROPOSED DETECTOR LOOP DESIGN AT 815-434-8505 IF ANY OTHER LOOPS ARE DAMAGED.
  - 6' X 20' TYPICAL DETECTOR LOOPS WITH 6' SPACING 10' FROM PROJECTED EDGE LINE OR STOP BAR AS NOTED.
  - 4 TURNS REQUIRED ON ALL DETECTOR LOOPS.
  - DETECTOR LOOPS SHALL BE INSTALLED IN THE LEVEL BINDER PRIOR TO PLACING SURFACE COURSE.

DETECTOR LOOP REPLACEMENT US 6 / CHESTNUT ST.		
	DETECTOR LOOP TYPE I	DETECTOR LOOP TESTING
	FOOT	EACH
SOUTH LEG	82	
EAST LEG	258	
WEST LEG	192	
TOTAL	532	1

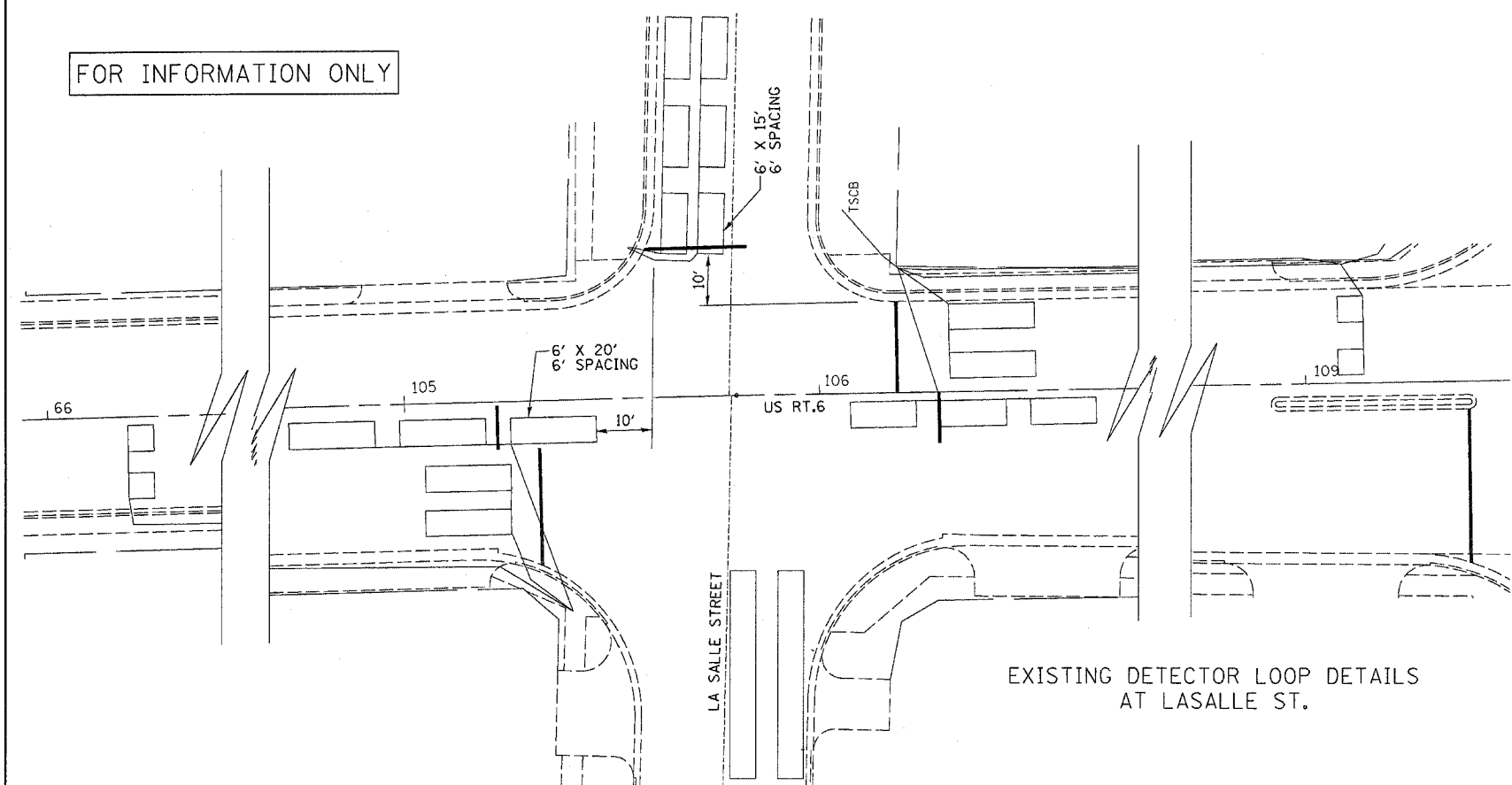


PROPOSED DETECTOR LOOP DETAILS AT CHESTNUT ST.

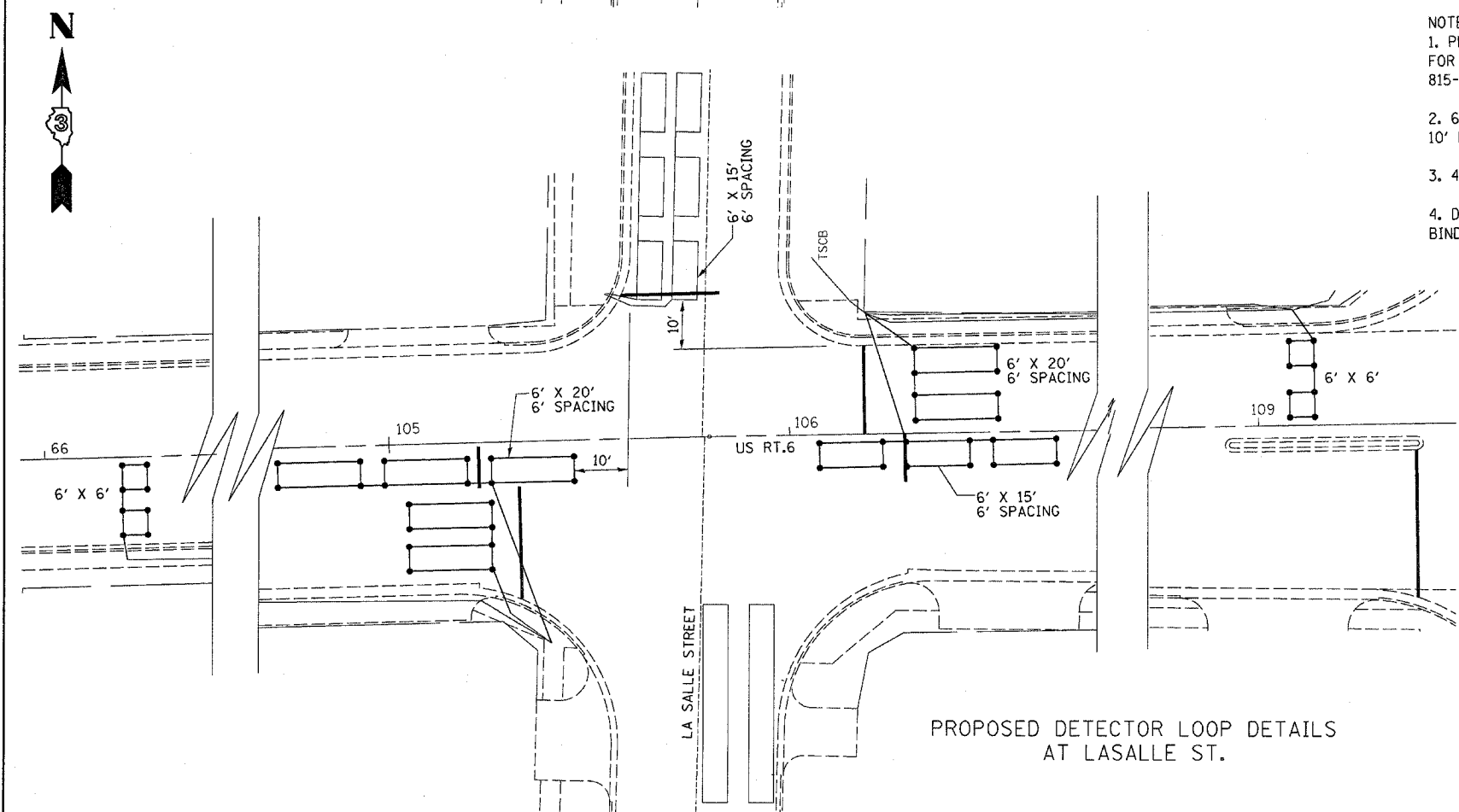
TRAFFIC SIGNAL LEGEND

EXISTING	PROPOSED	
		CONTROLLER
		SIGNAL POST
		HANDHOLE
		DOUBLE HANDHOLE
		IMC, G.S. OR P.V.C. CONDUIT IN TRENCH OR PUSHED
		CONDUIT LENGTH AND SIZE (TRENCHED AND/OR PUSHED AS INDICATED)
		LUMINAIRE
		PROPOSED DETECTOR LOOP
		SERVICE INSTALLATION

FOR INFORMATION ONLY

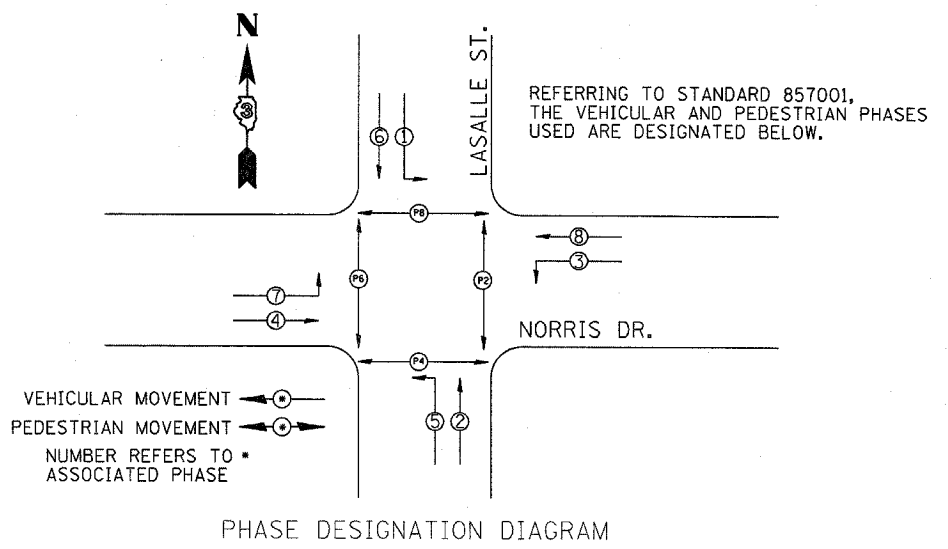


EXISTING DETECTOR LOOP DETAILS AT LASALLE ST.



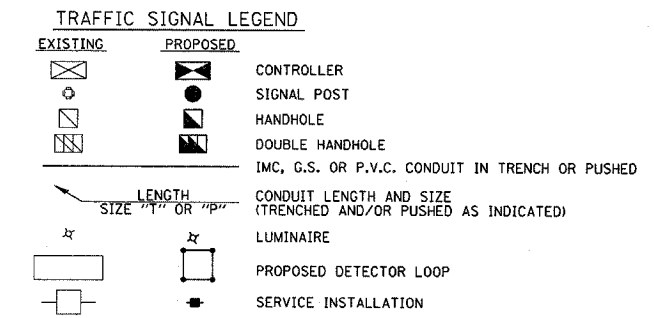
PROPOSED DETECTOR LOOP DETAILS AT LASALLE ST.

- NOTES:
- PLEASE CONTACT TRAFFIC SIGNAL SECTION FOR PROPOSED DETECTOR LOOP DESIGN AT 815-434-8505 IF ANY OTHER LOOPS ARE DAMAGED.
  - 6' X 20' TYPICAL DETECTOR LOOPS WITH 6' SPACING 10' FROM PROJECTED EDGE LINE OR STOP BAR AS NOTED.
  - 4 TURNS REQUIRED ON ALL DETECTOR LOOPS.
  - DETECTOR LOOPS SHALL BE INSTALLED IN THE LEVEL BINDER PRIOR TO PLACING SURFACE COURSE.



PHASE DESIGNATION DIAGRAM

DETECTOR LOOP REPLACEMENT US 6 / LASALLE ST.		
	DETECTOR LOOP TYPE I	DETECTOR LOOP TESTING
	FOOT	EACH
WEST LEG	310	
EAST LEG	292	
TOTAL	602	1



FILE NAME =	USER NAME = carpenterdj	DESIGNED -	REVISED -
ca\projects\366805\366805-shl-detail.dgn		DRAWN -	REVISED -
PLOT SCALE = 20.0000' / IN.		CHECKED -	REVISED -
PLOT DATE = Mar 21, 2008 - 02:32:05 PM		DATE -	REVISED -

STATE OF ILLINOIS  
DEPARTMENT OF TRANSPORTATION

DETECTOR LOOP DETAILS

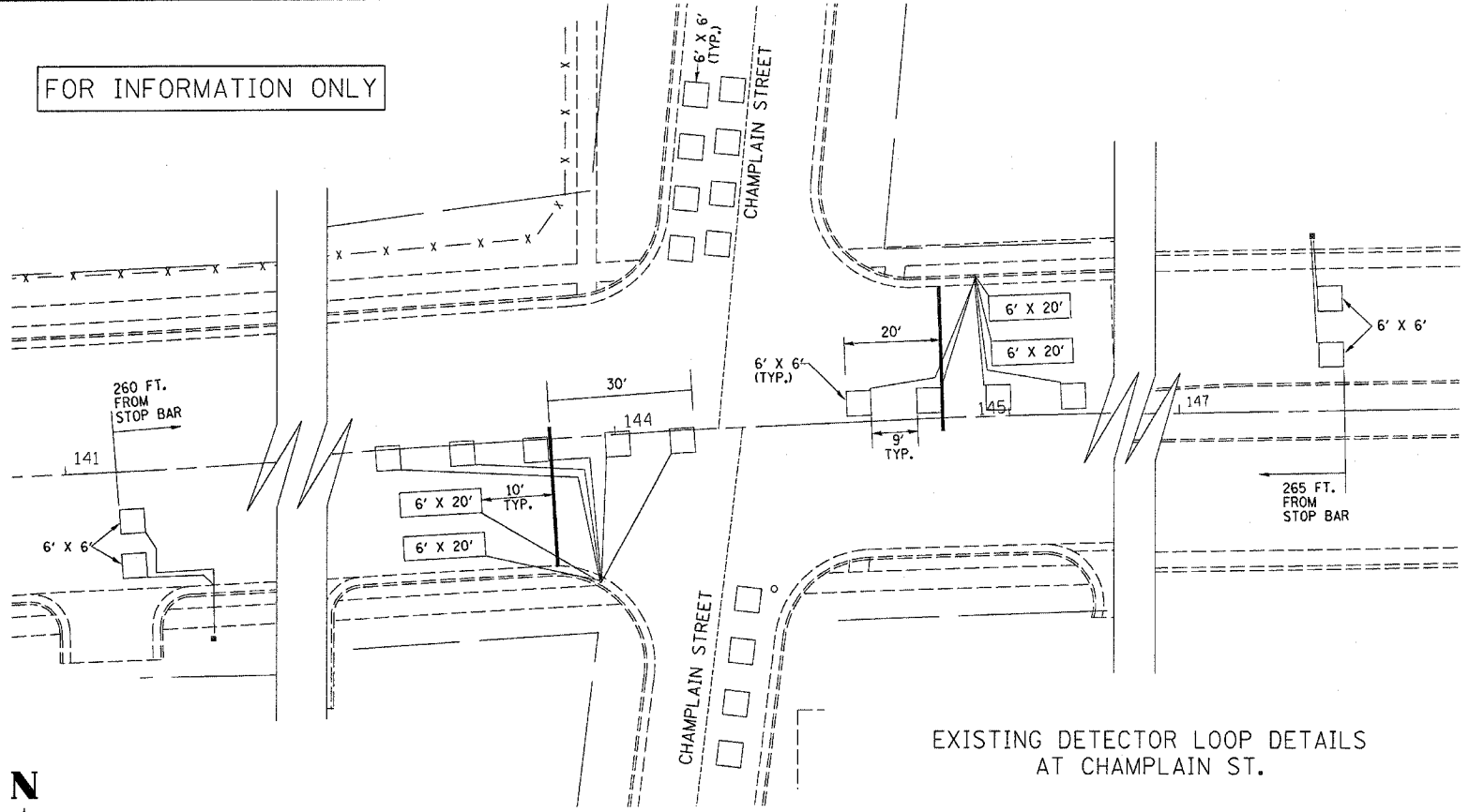
SCALE: SHEET NO. OF SHEETS STA. TO STA.

F.A.P. RTE.	SECTION	COUNTY	TOTAL SHEETS	SHEET NO.
623/790	(30,30X1,2)RS-3&(E)RS-1	LASALLE	24	15
CONTRACT NO. 66805				
FED. ROAD DIST. NO. ILLINOIS FED. AID PROJECT				



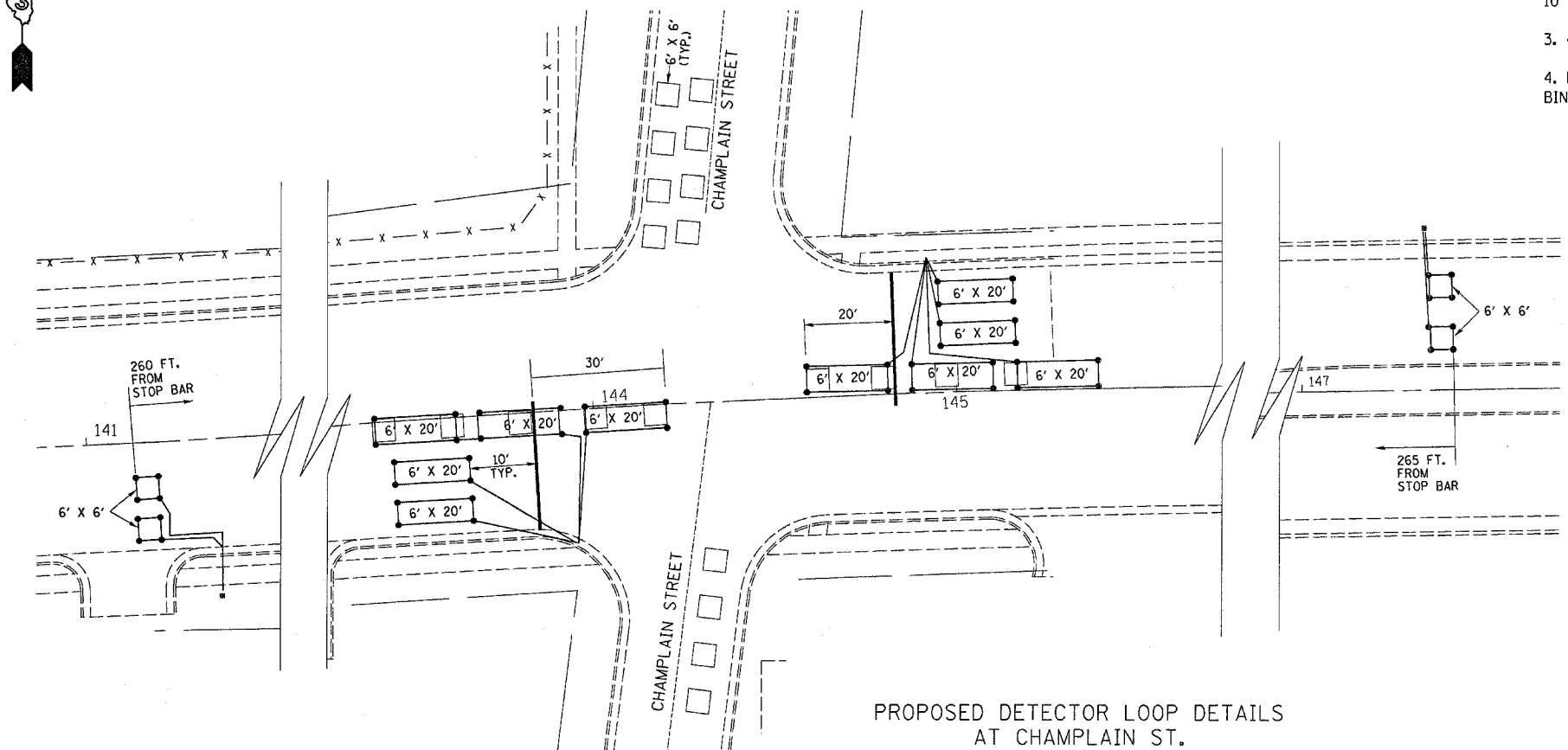


FOR INFORMATION ONLY



EXISTING DETECTOR LOOP DETAILS AT CHAMPLAIN ST.

- NOTES:
- PLEASE CONTACT TRAFFIC SIGNAL SECTION FOR PROPOSED DETECTOR LOOP DESIGN AT 815-434-8505 IF ANY OTHER LOOPS ARE DAMAGED.
  - 6' X 20' TYPICAL DETECTOR LOOPS WITH 6' SPACING 10' FROM PROJECTED EDGE LINE OR STOP BAR AS NOTED.
  - 4 TURNS REQUIRED ON ALL DETECTOR LOOPS.
  - DETECTOR LOOPS SHALL BE INSTALLED IN THE LEVEL BINDER PRIOR TO PLACING SURFACE COURSE.

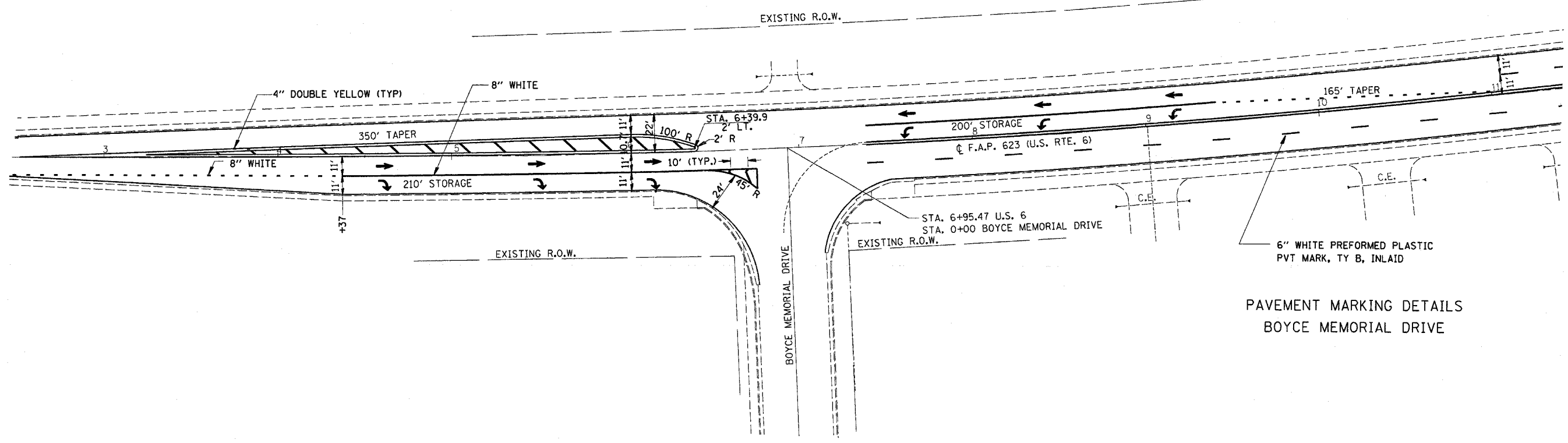


PROPOSED DETECTOR LOOP DETAILS AT CHAMPLAIN ST.

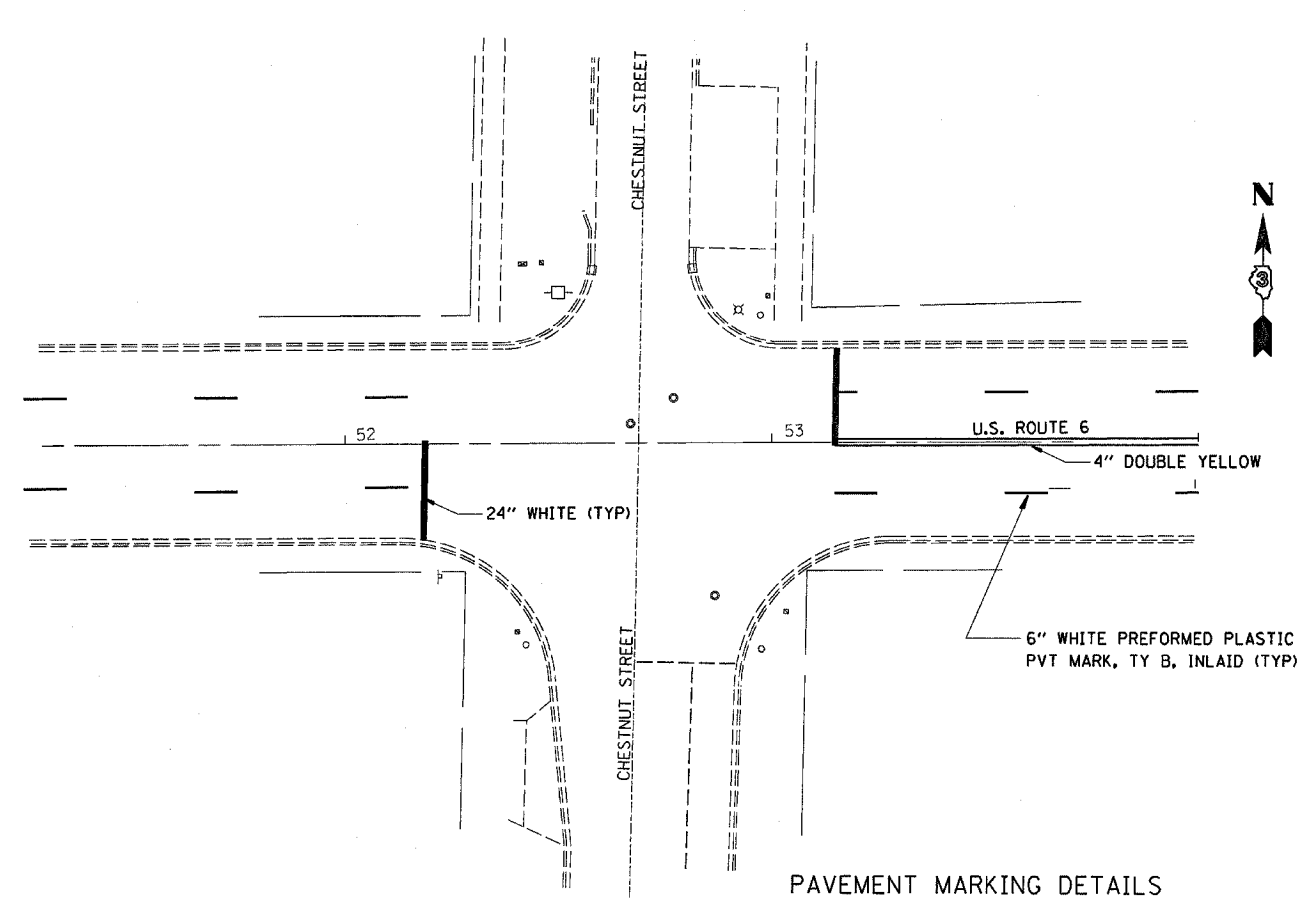
DETECTOR LOOP REPLACEMENT US 6 / CHAMPLAIN ST.		
	DETECTOR LOOP TYPE I	DETECTOR LOOP TESTING
	FOOT	EACH
WEST LEG	462	
EAST LEG	450	
TOTAL	912	1

TRAFFIC SIGNAL LEGEND		
EXISTING	PROPOSED	
		CONTROLLER
		SIGNAL POST
		HANDHOLE
		DOUBLE HANDHOLE
		IMC, G.S. OR P.V.C. CONDUIT IN TRENCH OR PUSHED
		CONDUIT LENGTH AND SIZE (TRENCHED AND/OR PUSHED AS INDICATED)
		LUMINAIRE
		PROPOSED DETECTOR LOOP
		SERVICE INSTALLATION

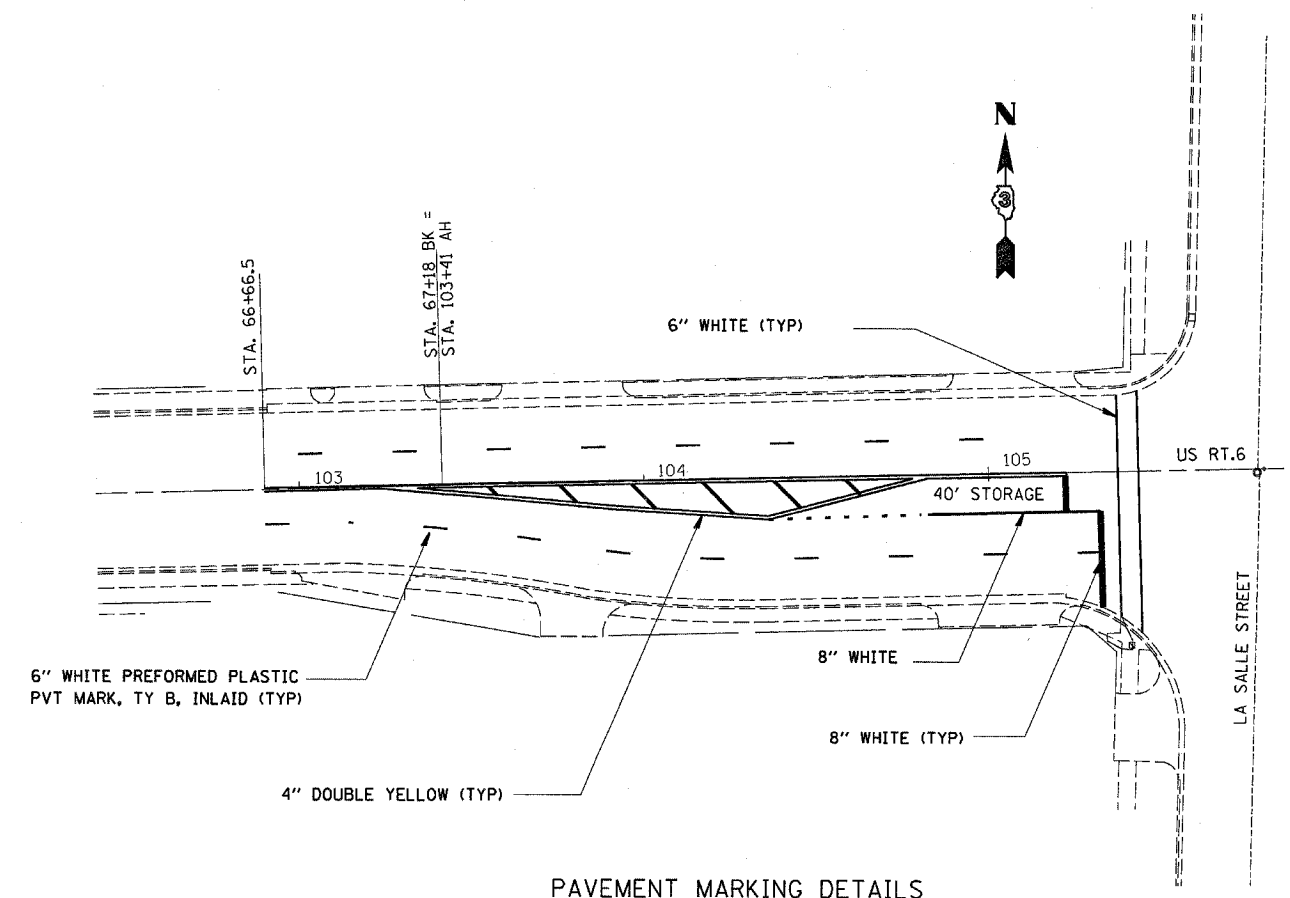




PAVEMENT MARKING DETAILS  
BOYCE MEMORIAL DRIVE

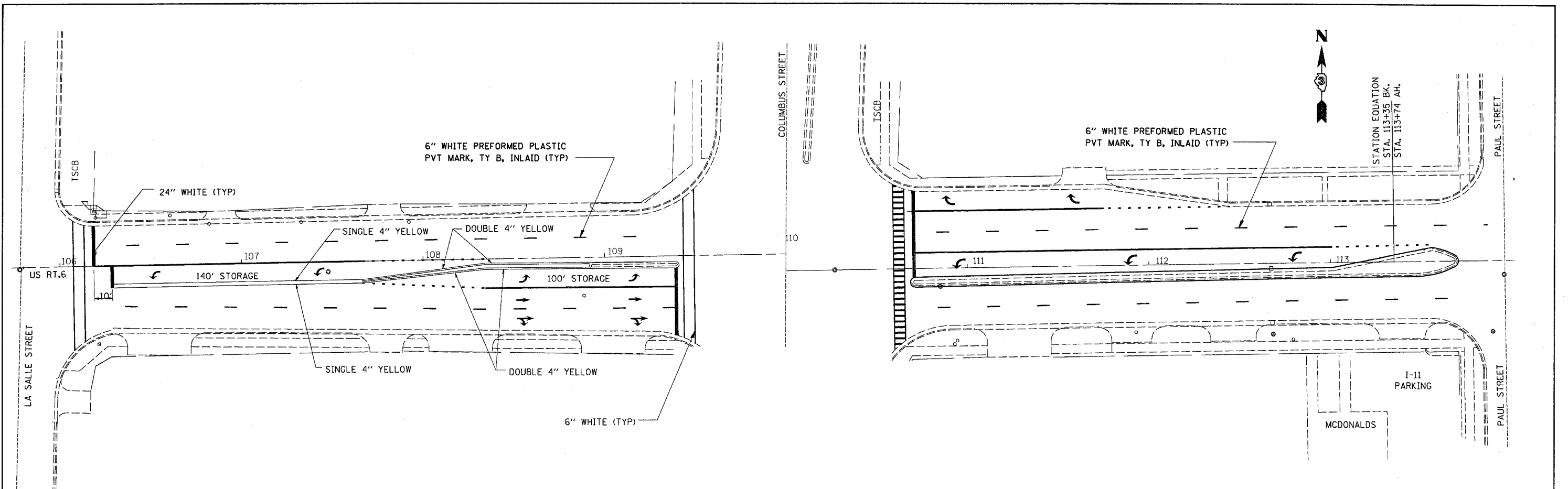


PAVEMENT MARKING DETAILS  
CHESTNUT STREET

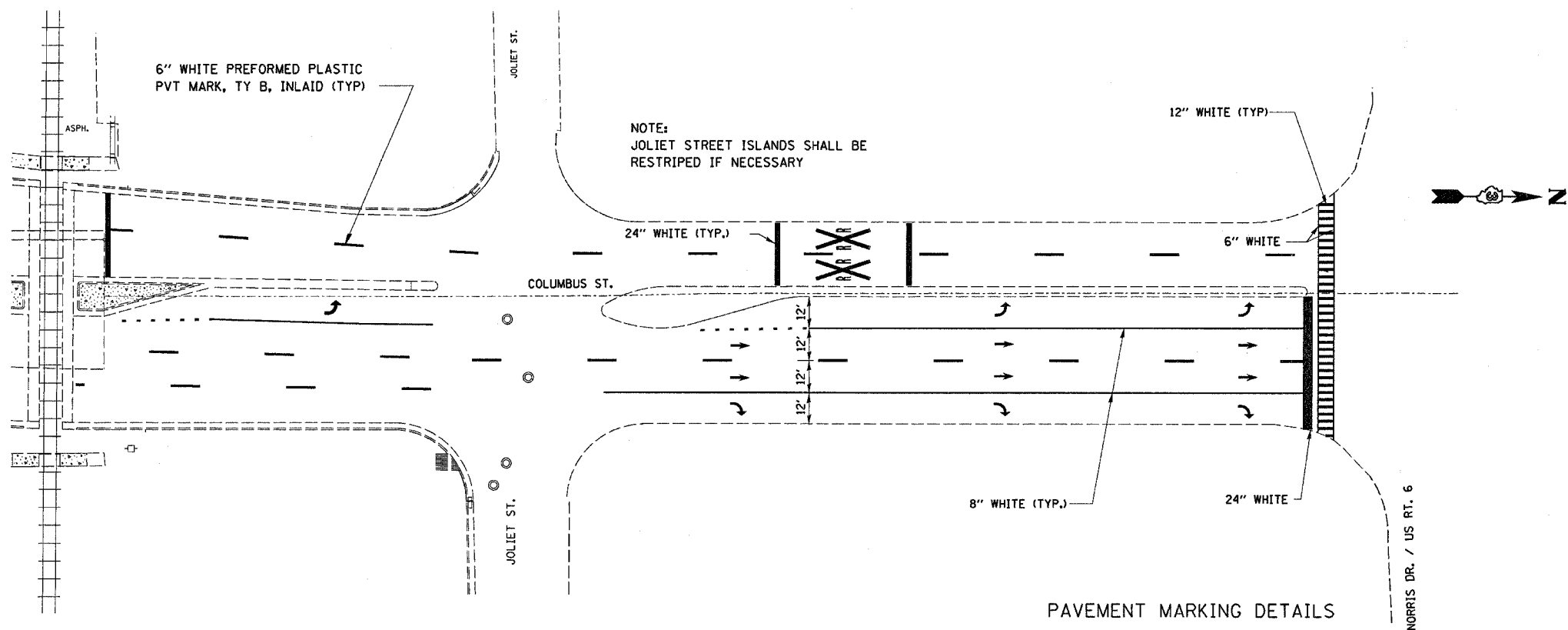


PAVEMENT MARKING DETAILS  
LASALLE STREET - WEST LEG

FILE NAME =	USER NAME = carpenterdj	DESIGNED -	REVISED -	<b>STATE OF ILLINOIS DEPARTMENT OF TRANSPORTATION</b>	<b>PAVEMENT MARKINGS</b>			F.A.P. RTE.	SECTION	COUNTY	TOTAL SHEETS	SHEET NO.
cr\projects\366805\366805-sht-details.dgn		DRAWN -	REVISED -					623/190	(30,30X1,2)RS-3&(E)RS-1	LASALLE	24	19
		PLLOT SCALE = 20,000' / IN.	CHECKED -		REVISED -	SCALE:	SHEET NO.	OF SHEETS	STA.	TO STA.	CONTRACT NO. 66805	
		PLLOT DATE = Mar 21, 2008 - 02:31:41 PM	DATE -		REVISED -							

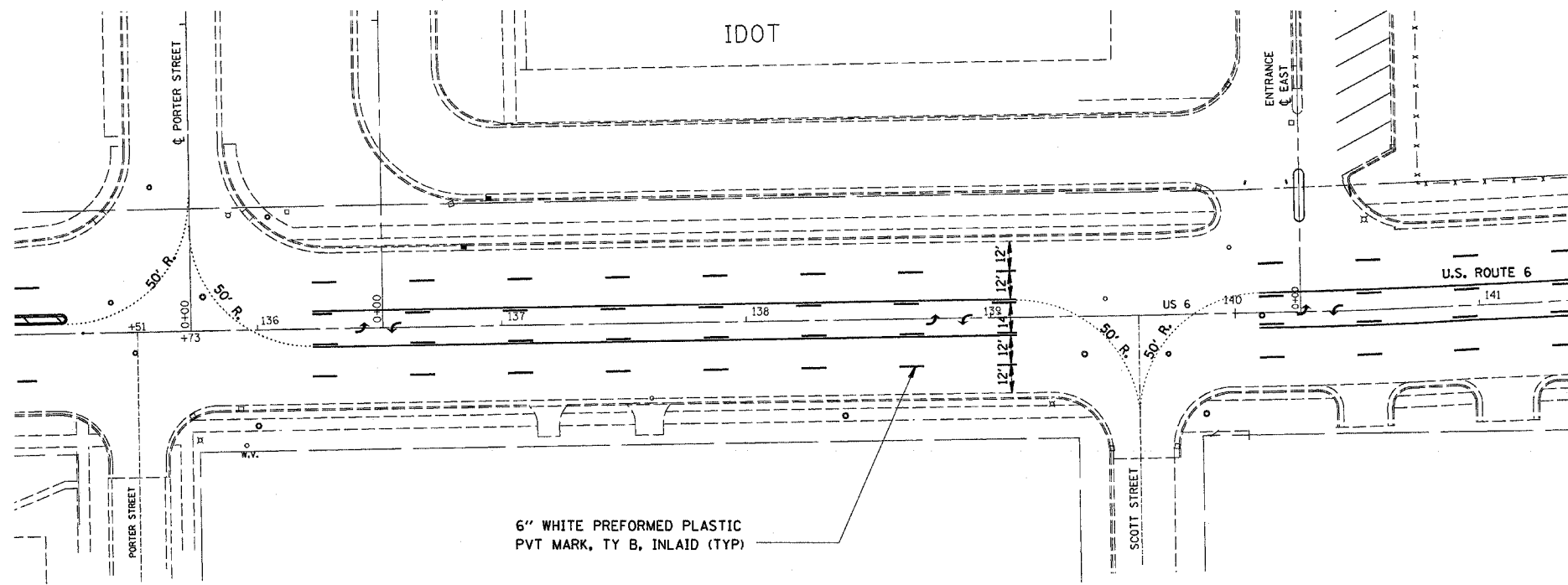


PAVEMENT MARKING DETAILS  
EAST LEG LASALLE & COLUMBUS

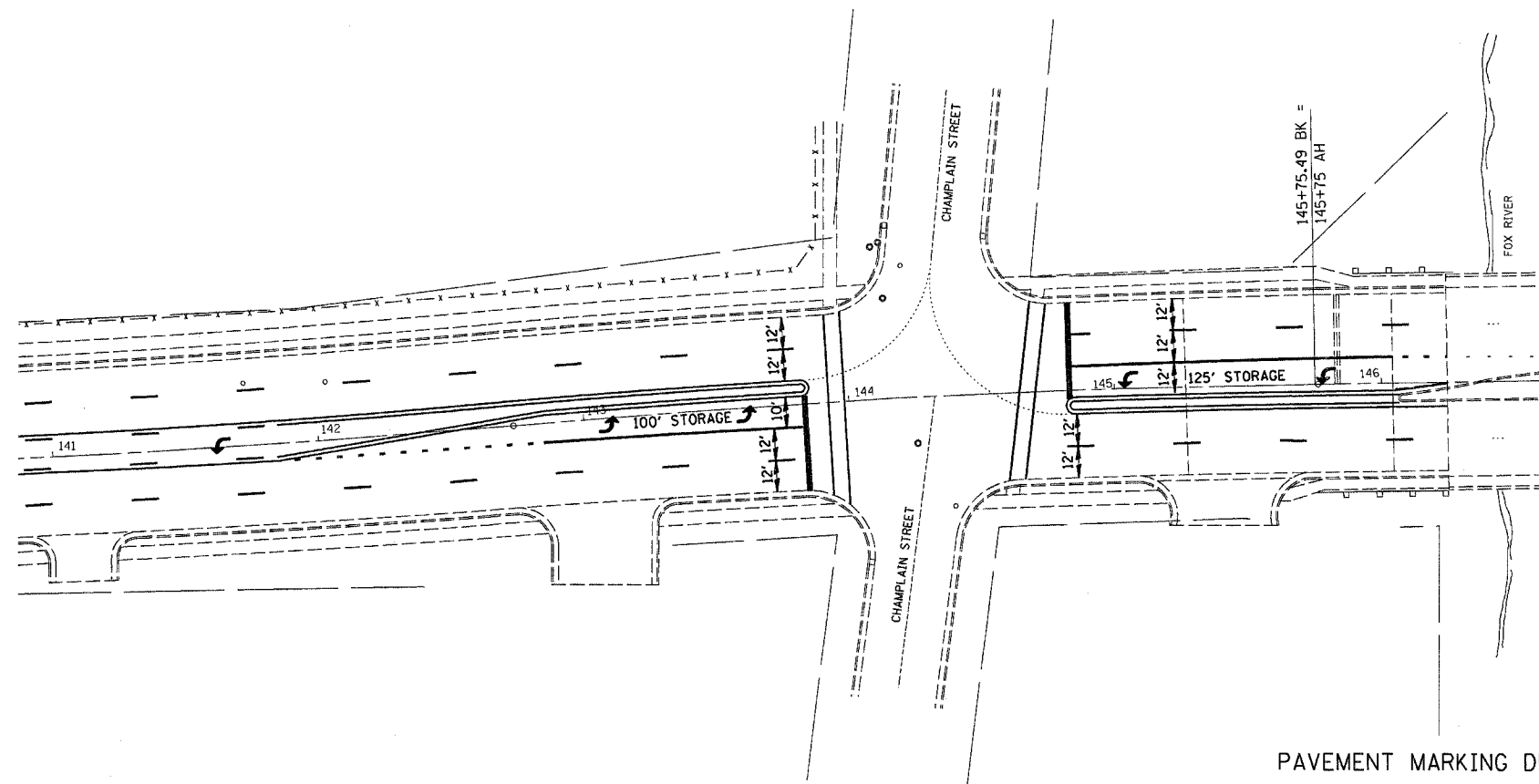


PAVEMENT MARKING DETAILS  
SOUTH LEG OF COLUMBUS ST

FILE NAME =	USER NAME = carpenterd.j	DESIGNED -	REVISED -	<b>STATE OF ILLINOIS DEPARTMENT OF TRANSPORTATION</b>	<b>PAVEMENT MARKINGS</b>			F.A.P. RTE.	SECTION	COUNTY	TOTAL SHEETS	SHEET NO.
c:\projects\366805\366805-sht-details.dgn		DRAWN -	REVISED -					623/790	(30,30X1,2)RS-3&(ERS-1	LASALLE	24	20
PLOT SCALE = 28.0000' / IN.		CHECKED -	REVISED -		SCALE: SHEET NO. OF SHEETS STA. TO STA.			CONTRACT NO. 66805				
PLOT DATE = Mar 21, 2009 - 02:31:34 PM		DATE -	REVISED -		FED. ROAD DIST. NO. ILLINOIS FED. AID PROJECT							

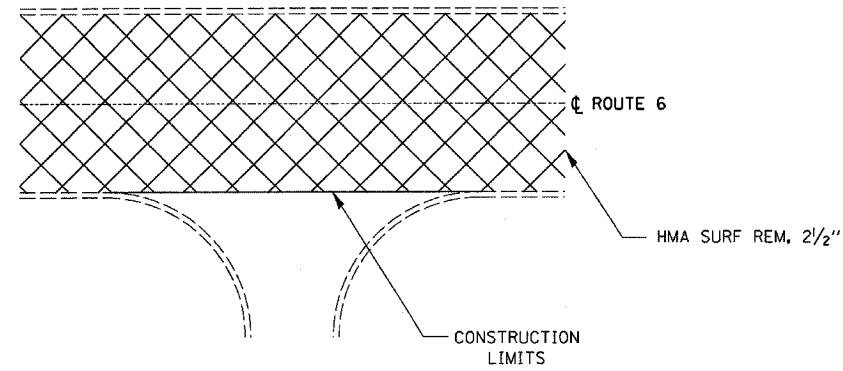


PAVEMENT MARKING DETAILS  
PORTER ST.



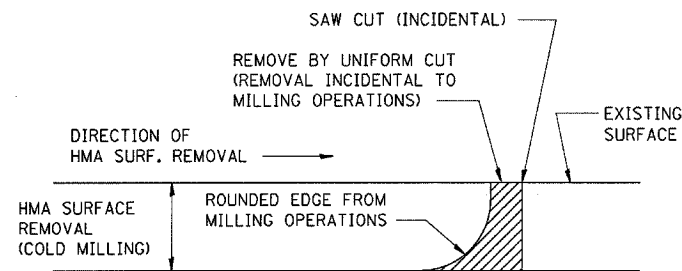
PAVEMENT MARKING DETAILS  
CHAMPLAIN ST.

FILE NAME = c:\projects\66805\66805-sht-details.dgn	USER NAME = carpenterdj	DESIGNED -	REVISED -	<b>STATE OF ILLINOIS DEPARTMENT OF TRANSPORTATION</b>	<b>PAVEMENT MARKINGS</b>			F.A.P. RTE.	SECTION	COUNTY	TOTAL SHEETS	SHEET NO.
	PLOT SCALE = 20.0000' / IN.	DRAWN -	REVISED -					623/190	(30,30X1,2)RS-3&(E)RS-1	LASALLE	24	21
	PLOT DATE = Mar 21, 2008 - 02:31:24 PM	CHECKED -	REVISED -					CONTRACT NO. 66805				
	DATE -	REVISED -		SCALE:	SHEET NO.	OF	SHEETS	STA.	TO STA.	FED. ROAD DIST. NO. ILLINOIS FED. AID PROJECT		



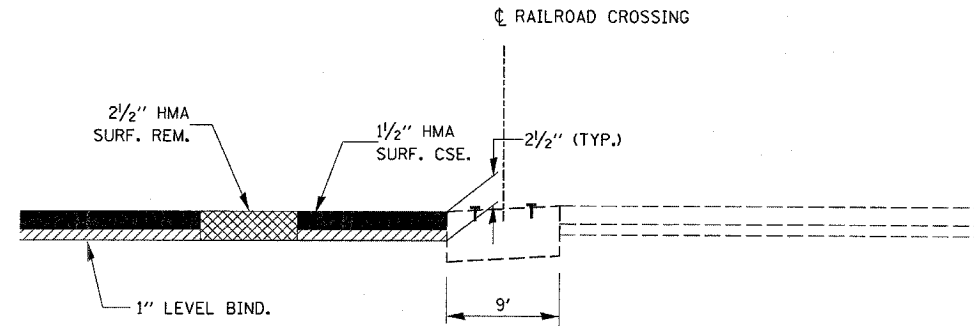
NOTE: THE SOUTH LEG OF COLUMBUS ST. SHALL BE MILLED TO CSX RAILROAD TRACKS.  
NO OTHER SIDEROADS SHALL BE MILLED OR RESURFACED.

### MILLING AT SIDE STREETS



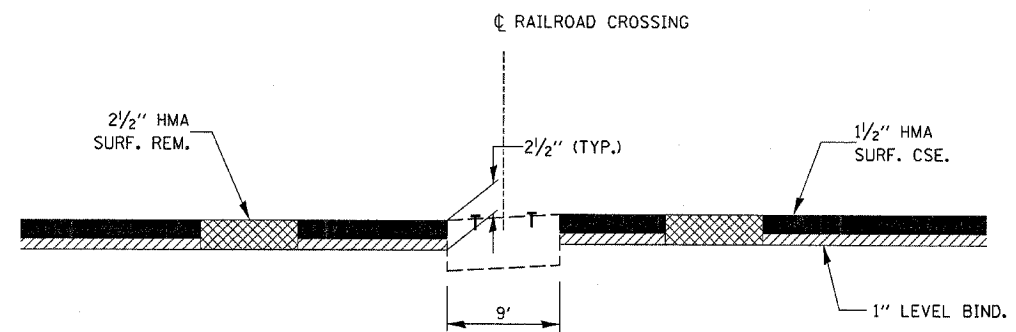
NOTE: WHEN MILLING OPERATIONS PRODUCE A ROUNDED EDGE, THEN A SAW CUT SHALL BE USED TO MANUFACTURE A PERPENDICULAR EDGE AS SHOWN IN THE DETAIL. THE ENGINEER SHALL BE THE SOLE JUDGE CONCERNING THE USE OF THIS DETAIL.

### BITUMINOUS DETAIL AT MILLING TERMINI



### HMA SURFACE REMOVAL AT RAILROAD CROSSING

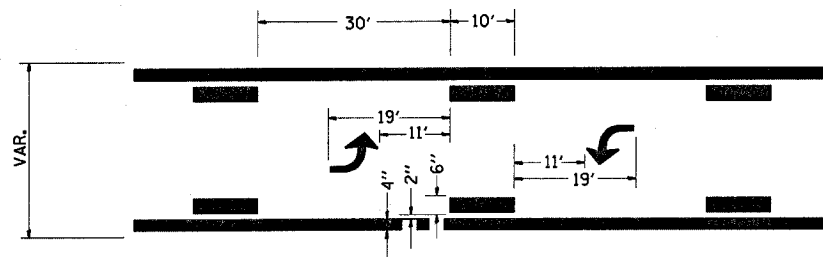
IL. 23/IL 71 - CSX TRANSPORTATION, INC (DOT/AAR 603 805 M)



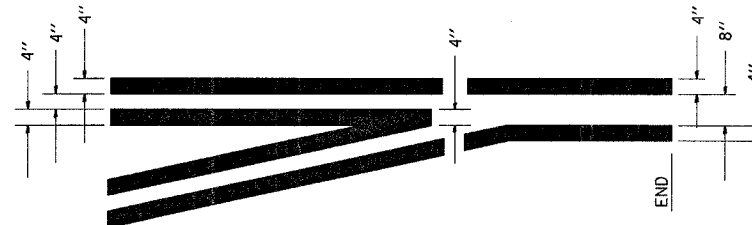
### HMA SURFACE REMOVAL AT RAILROAD CROSSING

US 6 - ILLINOIS RAILWAY (DOT/AAR NO. 065 106B)  
US 6 - CRO PROPERTIES, INC. (DOT/AAR NO. 603 811 R)

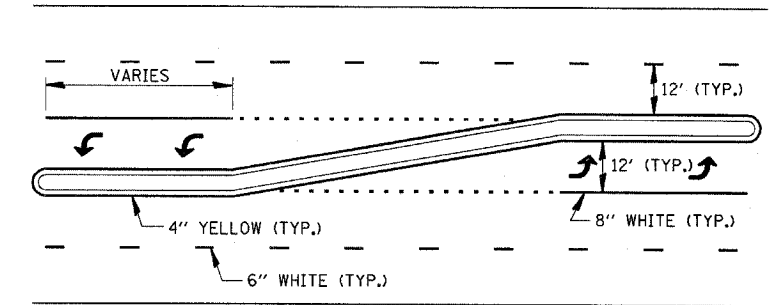
FILE NAME =	USER NAME = carpenterd	DESIGNED -	REVISED -	<b>STATE OF ILLINOIS DEPARTMENT OF TRANSPORTATION</b>	<b>DETAILS</b>	F.A.P. RTE.	SECTION	COUNTY	TOTAL SHEETS	SHEET NO.
c:\projects\4366805\4366805-shc-details.dgn		DRAWN -	REVISED -			623/790	(30,30X1,2)RS-3&(E)RS-1	LASALLE	24	22
PLOT SCALE = 20,0000' / IN.		CHECKED -	REVISED -			CONTRACT NO. 66805				
PLOT DATE = Mar 21, 2008 - 02:31:18 PM		DATE -	REVISED -			SCALE:	SHEET NO. OF SHEETS	STA. TO STA.	FED. ROAD DIST. NO.	ILLINOIS FED. AID PROJECT



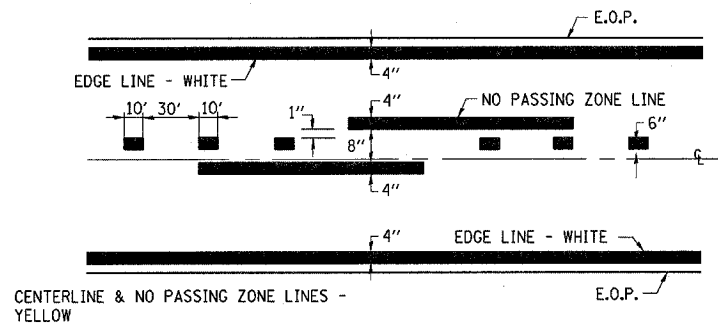
**TYPICAL APPLICATION @  
BI-DIRECTIONAL TURN LANE**



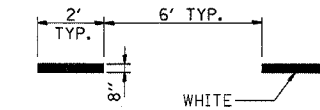
**TYPICAL APPLICATION  
@ LEFT TURN LANES**



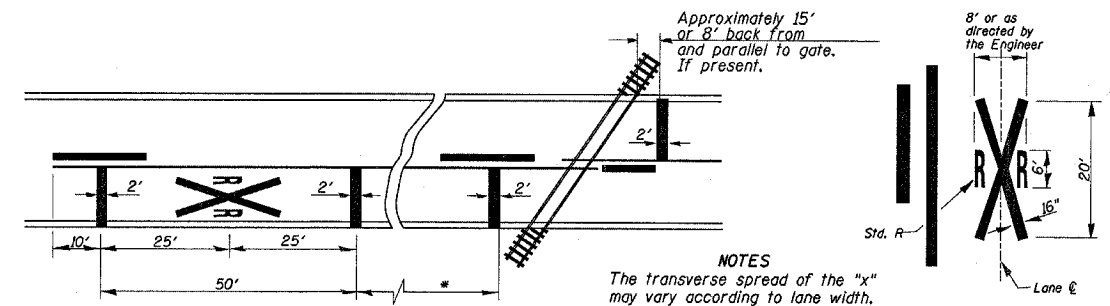
**PAVEMENT MARKINGS STA. 113+35 TO STA. 135+74.61**



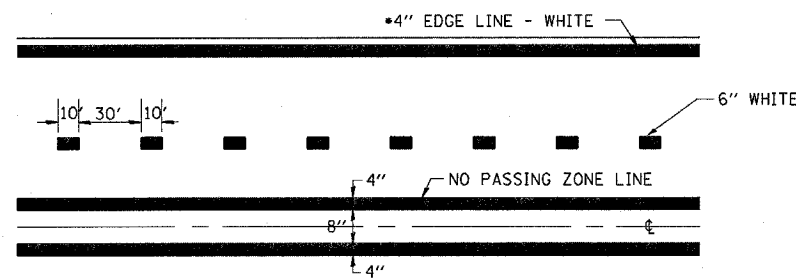
**PAVEMENT MARKING**



**LEFT TURN SKIP DASH**

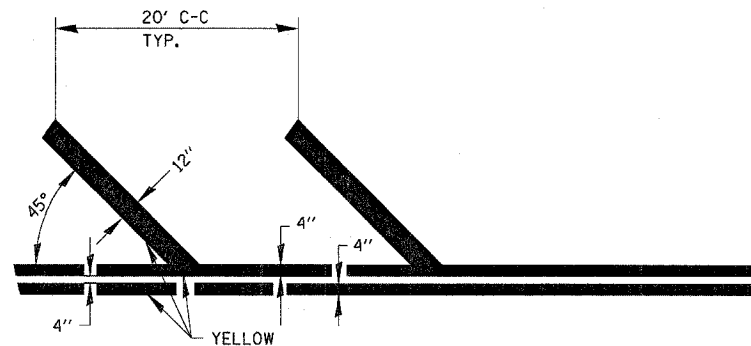


**PAVEMENT MARKINGS AT  
RAILROAD-HIGHWAY GRADE CROSSING**

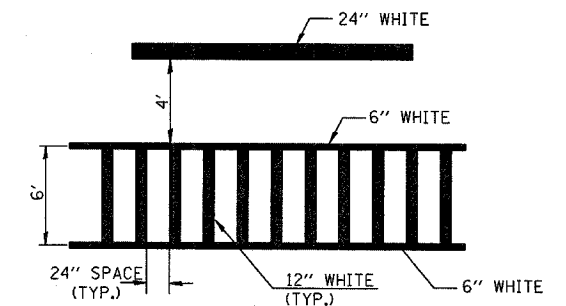


**4-LANE PAVEMENT MARKING**

- NOTES:  
1. 11' LANE WIDTH STA. 0+99 TO STA. 67+18  
12' LANE WIDTH STA. 113+35 TO STA. 135+57



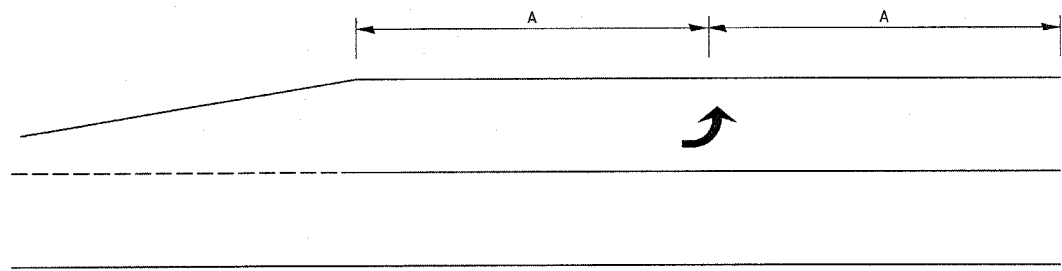
**MEDIAN PAVEMENT MARKING DETAILS**



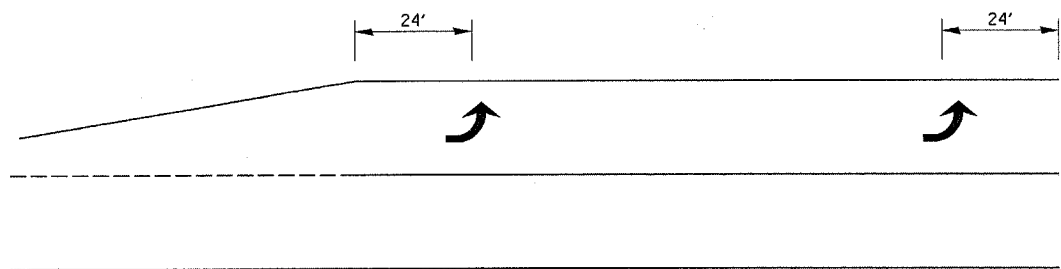
**TYPICAL SPACING DETAIL FOR  
CROSSWALKS AND STOP BARS**

NOTE: 12" WHITE ONLY AT SCHOOL CROSSINGS  
WITH CROSSING GUARD

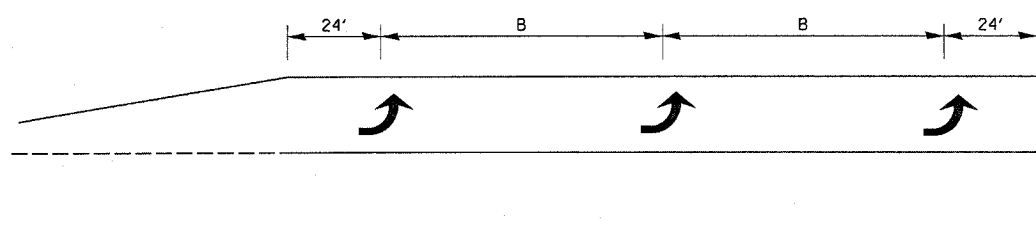
FILE NAME =	USER NAME = carpenrdj	DESIGNED -	REVISED -	<b>STATE OF ILLINOIS DEPARTMENT OF TRANSPORTATION</b>	<b>DETAILS</b>	F.A.P. RTE.	SECTION	COUNTY	TOTAL SHEETS	SHEET NO.	
cr\projects\366805\366805-sht-details.dgn	PLOT SCALE = 20,000' / IN.	DRAWN -	REVISED -			623/790	(30,30X1,2)RS-3&(ERS-1	LASALLE	24	23	
PLOT DATE = Mar 21, 2008 - 02:31:12 PM	DATE -	CHECKED -	REVISED -			CONTRACT NO. 66805					
		DATE -	REVISED -			ILLINOIS FED. AID PROJECT					
				SCALE:	SHEET NO. OF SHEETS	STA. TO STA.					



**99' AND UNDER**

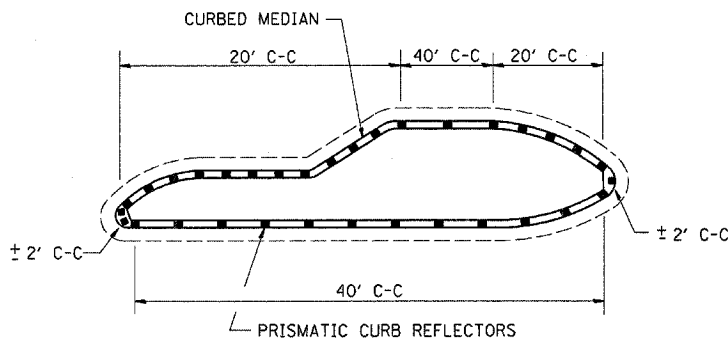


**100' TO 149'**



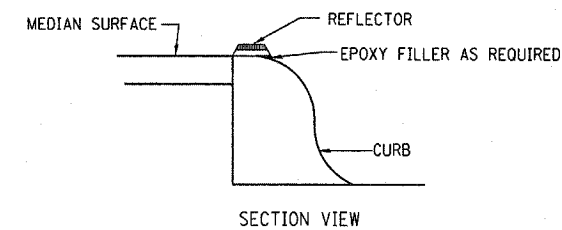
**150' AND LONGER**

**TYPICAL PLACEMENT OF ARROWS  
IN TURN LANES**

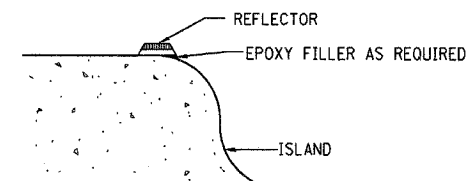


1. PRISMATIC REFLECTORS SHALL BE BI-DIRECTIONAL.
2. PRISMATIC REFLECTORS SHALL BE SECURED IN PLACE WITH AN EPOXY ADHESIVE.
3. PRISMATIC REFLECTORS SHALL BE AMBER IN COLOR.

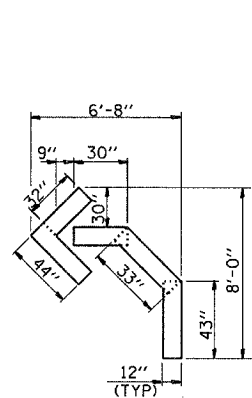
**PRISMATIC CURB REFLECTORS  
AT CURB MEDIANS**



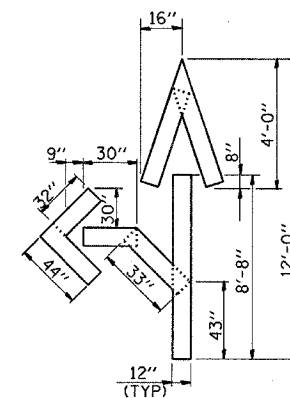
**SECTION VIEW**



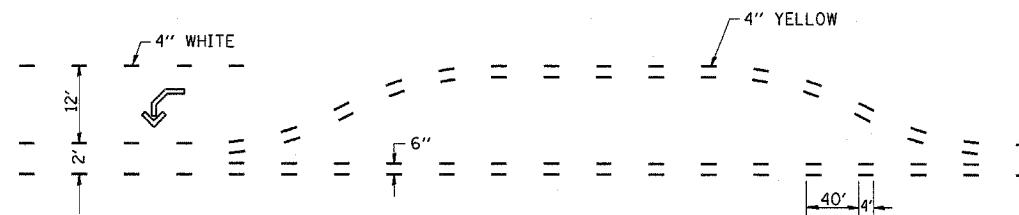
**SECTION VIEW**



**QUANTITY**  
12" LINE = 16 LIN. FT.  
OR 4" LINE = 48 LIN. FT.



**QUANTITY**  
12" LINE = 29 LIN. FT.  
OR 4" LINE = 87 LIN. FT.



FILE NAME =	USER NAME = carpenterd.j	DESIGNED -	REVISED -
es:\projects\1366805\1366805-shit-details.dgn		DRAWN -	REVISED -
	PLOT SCALE = 20.0000' / IN.	CHECKED -	REVISED -
	PLOT DATE = Mar 24, 2008 - 07:42:25 AM	DATE -	REVISED -

**STATE OF ILLINOIS  
DEPARTMENT OF TRANSPORTATION**

**DETAILS**

SCALE: SHEET NO. OF SHEETS STA. TO STA.

F.A.P. RTE.	SECTION	COUNTY	TOTAL SHEETS	SHEET NO.
623/790	(30,30X1,2)RS-3&(E)RS-1	LASALLE	24	24
CONTRACT NO. 66805				
FED. ROAD DIST. NO. ILLINOIS FED. AID PROJECT				