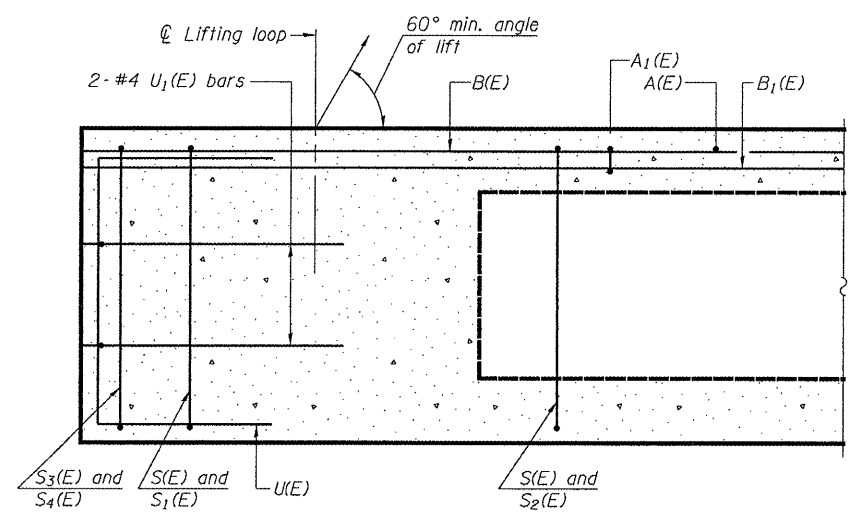


STATE OF ILLINOIS
DEPARTMENT OF TRANSPORTATION

ROUTE NO.	SECTION	COUNTY	LISTED SHEETS	SHEET NO.
FAP 317	*	LIVINGSTON	16	12
FED. ROAD DIST. NO. 7	ILLINOIS	FED. AID PROJECT		

Contract Number: 66809
* (25-B-1)1-1

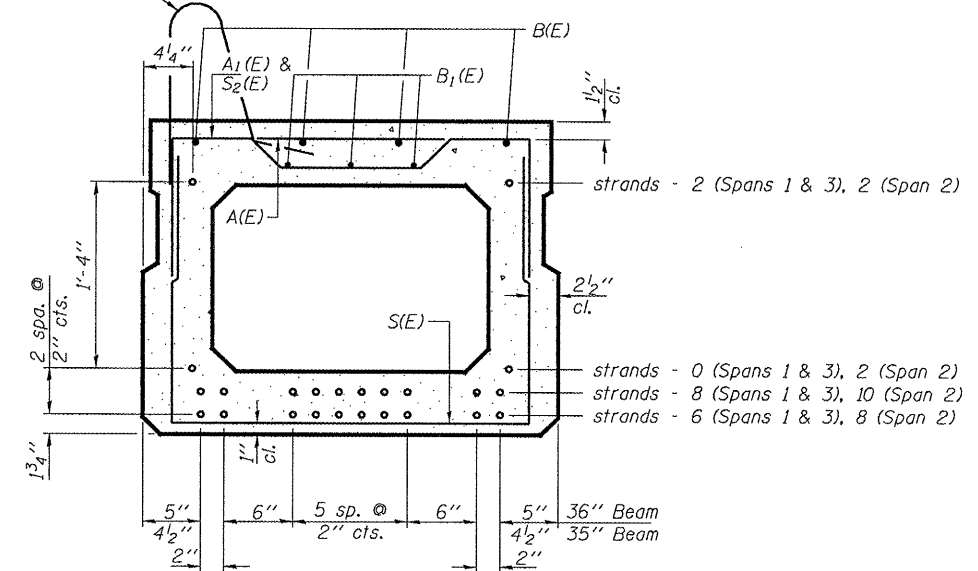
SHEET NO. 2
6 SHEETS



SECTION C-C

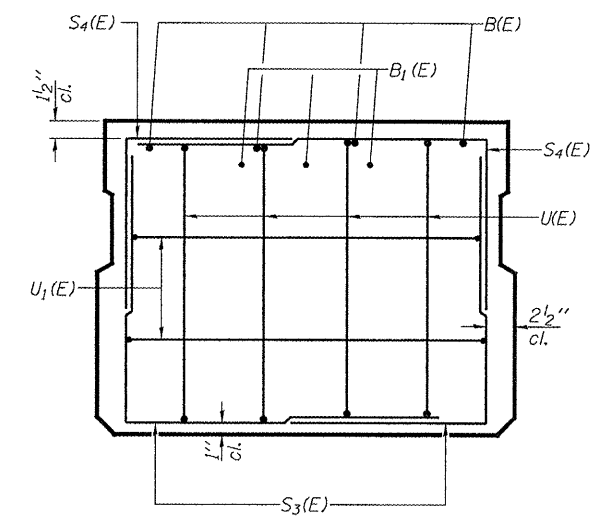
- * 34 (Spans 1 & 3)
41 (Span 2)
- ** 17 (Spans 1 & 3)
20 (Span 2)
- *** 9 (Spans 1 & 3)
10 (Span 2)

#5 D(E) bars at 12" cts.
(Exterior face of outside beam only)



SECTION A-A

(Showing reinforcement and permissible strand locations)
Note: Place the number of strands specified in each row symmetrically about the centerline of beam in the permissible strand locations shown.



VIEW B-B

SPANS 1 & 3 BAR LIST
ONE 35" BEAM ONLY
(For information only)

Bar	No.	Size	Length	Shape
A(E)	18	#4	2'-6"	—
A1(E)	34	#4	2'-9"	—
B(E)	12	#5	21'-0"	—
B1(E)	9	#4	20'-6"	—
S(E)	76	#4	6'-4"	┌
S1(E)	8	#4	5'-10"	┌
S2(E)	68	#4	6'-1"	┌
S3(E)	8	#4	4'-7"	┌
S4(E)	8	#4	4'-6"	┌
U(E)	8	#5	4'-6"	┌
U1(E)	4	#4	5'-9"	┌

SPANS 1 & 3 BAR LIST
ONE 36" BEAM ONLY
(For information only)

Bar	No.	Size	Length	Shape
A(E)	18	#4	2'-7"	—
A1(E)	34	#4	2'-10"	—
B(E)	12	#5	21'-0"	—
B1(E)	9	#4	20'-6"	—
S(E)	76	#4	6'-5"	┌
S1(E)	8	#4	5'-11"	┌
S2(E)	68	#4	6'-2"	┌
S3(E)	8	#4	4'-7"	┌
S4(E)	8	#4	4'-6"	┌
U(E)	8	#5	4'-6"	┌
U1(E)	4	#4	5'-10"	┌

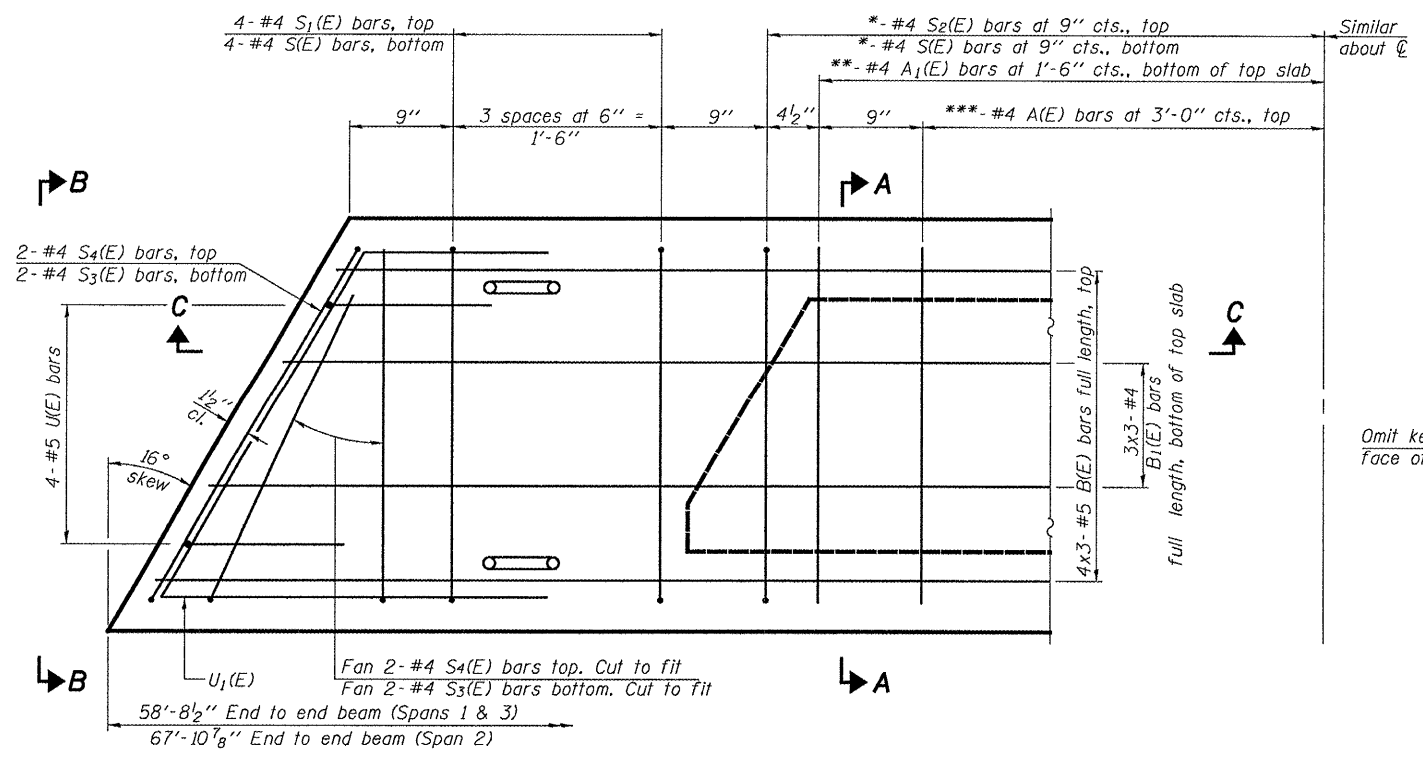
SPAN 2 BAR LIST
ONE 35" BEAM ONLY
(For information only)

Bar	No.	Size	Length	Shape
A(E)	20	#4	2'-6"	—
A1(E)	40	#4	2'-9"	—
B(E)	12	#5	24'-0"	—
B1(E)	9	#4	23'-8"	—
S(E)	90	#4	6'-4"	┌
S1(E)	8	#4	5'-10"	┌
S2(E)	82	#4	6'-1"	┌
S3(E)	8	#4	4'-7"	┌
S4(E)	8	#4	4'-6"	┌
U(E)	8	#5	4'-6"	┌
U1(E)	4	#4	5'-9"	┌

SPAN 2 BAR LIST
ONE 36" BEAM ONLY
(For information only)

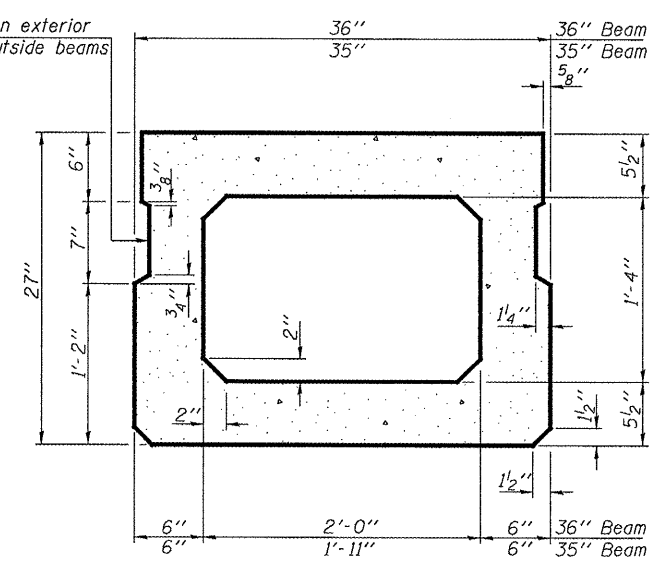
Bar	No.	Size	Length	Shape
A(E)	20	#4	2'-7"	—
A1(E)	40	#4	2'-10"	—
B(E)	12	#5	24'-0"	—
B1(E)	9	#4	23'-8"	—
Δ D(E)	68	#5	3'-9"	┌
S(E)	90	#4	6'-5"	┌
S1(E)	8	#4	5'-11"	┌
S2(E)	82	#4	6'-2"	┌
S3(E)	8	#4	4'-7"	┌
S4(E)	8	#4	4'-6"	┌
U(E)	8	#5	4'-6"	┌
U1(E)	4	#4	5'-10"	┌

Δ Fascia Beam Only



PLAN VIEW

Omit key on exterior face of outside beams



SECTION A-A
(Showing dimensions)

Notes:
Spacing of S(E) and S2(E) bars may be adjusted up to 4" in the immediate area of the transverse tie diaphragms to miss the block outs for the transverse ties.
Bars indicated thus 4 x 3-#5 etc. indicates 4 lines of bars with 3 lengths per line.
See sheet 3 of 6 for additional details and Bill of Material.

DESIGNED	ATH
CHECKED	AJB
DRAWN	Steffen
CHECKED	ATH AJB

MAY 12, 2008
EXAMINED *Carl Perry*
ENGINEER OF STRUCTURAL SERVICES
PASSED *Ralph E. Anderson*
ENGINEER OF BRIDGES AND STRUCTURES

BEAM DETAILS
FAP 317 OVER SOUTH FORK
VERMILION RIVER
LIVINGSTON COUNTY
SN 053-0152