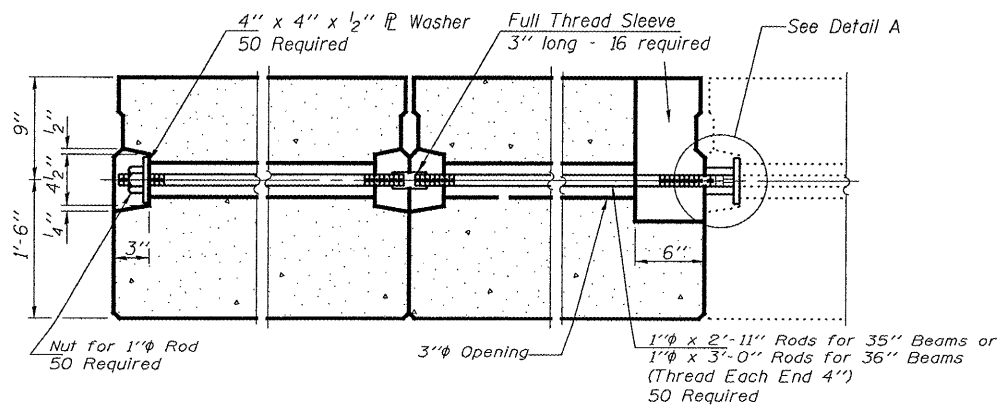


STATE OF ILLINOIS
DEPARTMENT OF TRANSPORTATION

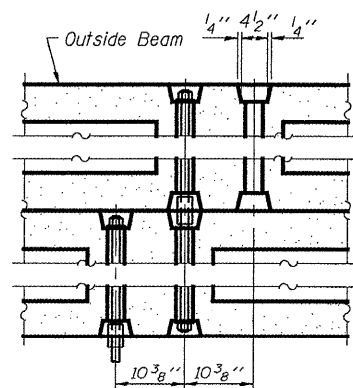
ROUTE NO.	SECTION	COUNTY	TOTAL SHEETS	SHEET NO.	SHEET NO. 4 6 SHEETS
FAP 317	*	LIVINGSTON	16	14	
FED. ROAD DIST. NO. 7	ILLINOIS	FED. AID PROJECT			

Contract Number: 66809
* (25-B-1)-1

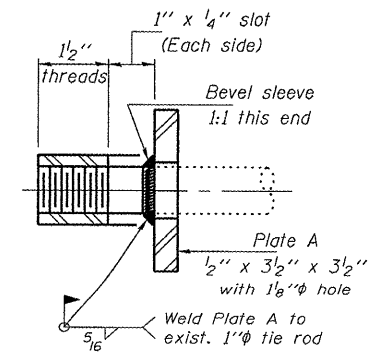
6" x 6" x 11 1/2" Blockout to be filled with Class BS Concrete after Beams have been installed. Cost shall be included in the cost of "Concrete Superstructure".



TYPICAL TRANSVERSE TIE ASSEMBLY



DETAIL A



SECTION A-A
(18 Required)

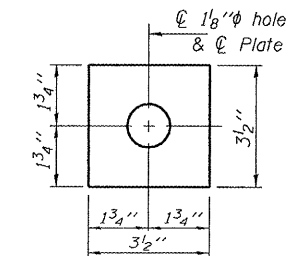
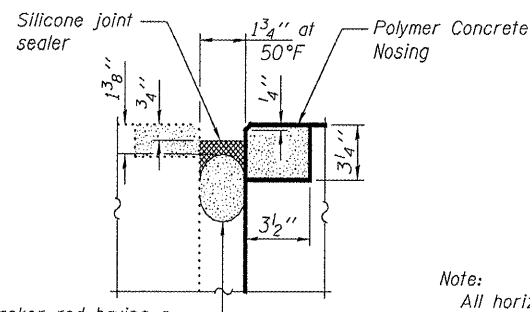
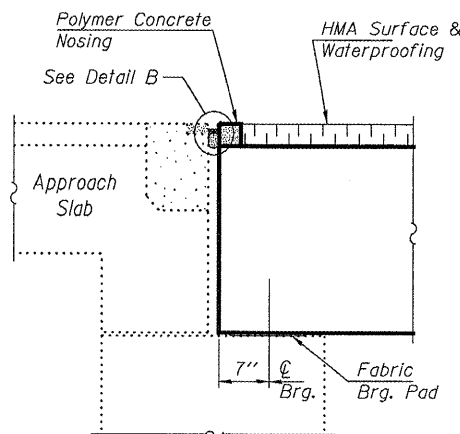


PLATE A
(18 Required)

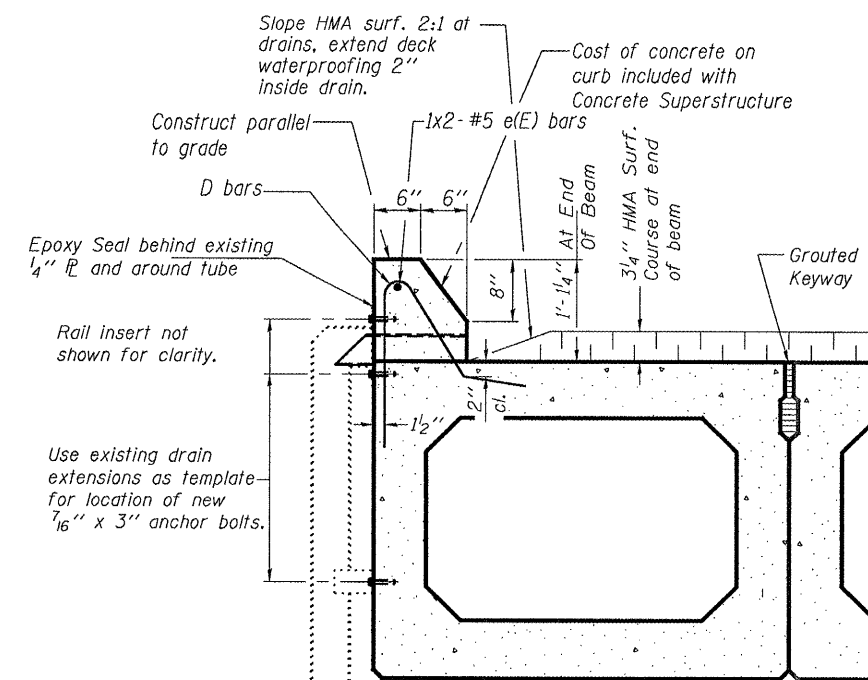


DETAIL B

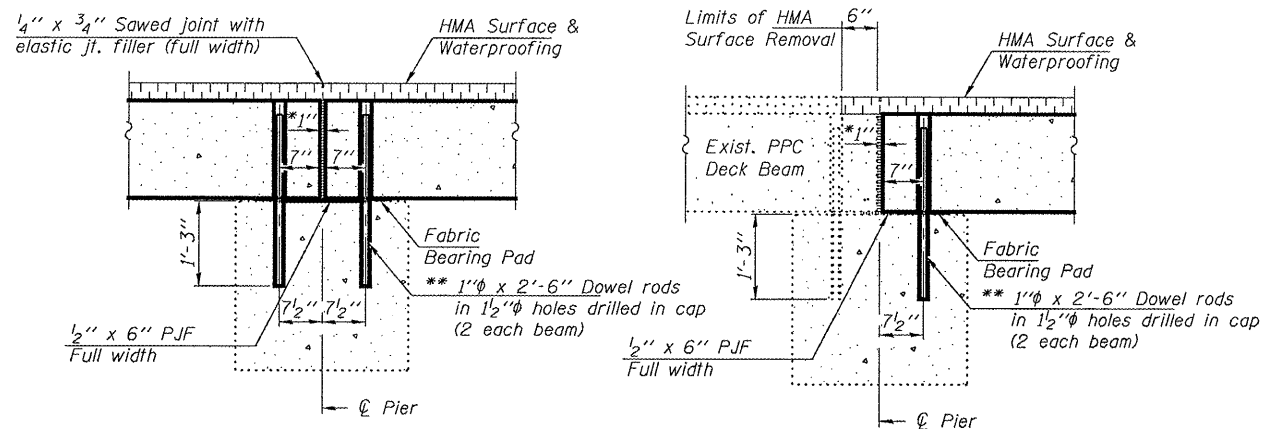
Note:
All horizontal dimensions are at right angles to beam ends.



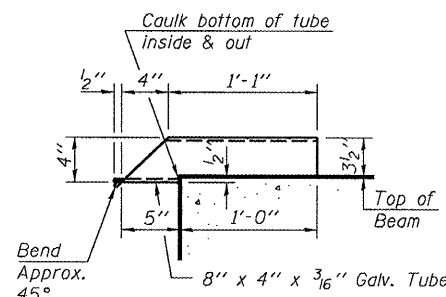
SECTION THRU ABUTMENT



TYPICAL SECTION THRU CURB



SECTIONS THRU FIXED PIERS



DRAIN DETAIL

Cost included with Concrete Superstructure

Mn. Bar Lap
#5 = 2'-2"

BILL OF MATERIAL

Bar	No.	Size	Length	Shape
e(E)	2	#5	35'-0"	
Reinforcement Bars, Epoxy Coated			Pounds	70

Bars indicated thus 1 x 2-#5 etc. indicates 1 line of bars with 2 lengths per line.

REPAIR DETAILS
FAP 317 OVER SOUTH FORK
VERMILION RIVER
LIVINGSTON COUNTY
SN 053-0152

DESIGNED	ATH
CHECKED	AJB
DRAWN	Steffen
CHECKED	ATH AJB

MAY 12, 2008
EXAMINED *Carl Perry*
ENGINEER OF STRUCTURAL SERVICES
PASSED *Ralph E. Anderson*
ENGINEER OF BRIDGES AND STRUCTURES

* 1" Jt. shall be filled with non-shrink grout. 1" dimension may vary to accommodate tolerance in beam lengths.
** Existing dowel rods are to be burned off, ground flush, and sealed with epoxy prior to placement of new beams. Cost included in Removal of Existing PPC Deck Beams. After beams have been erected holes shall be drilled in cap and dowel rods placed. Dowel holes shall be filled with non-shrink grout to top of beam and allowed to cure a minimum of 24 hours prior to grouting the shear keys.