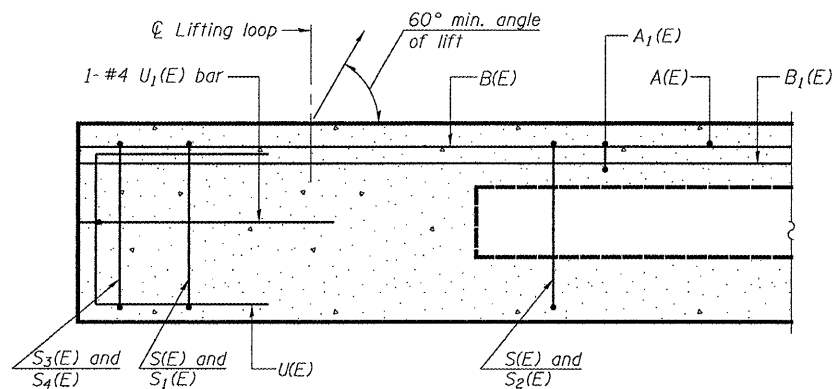


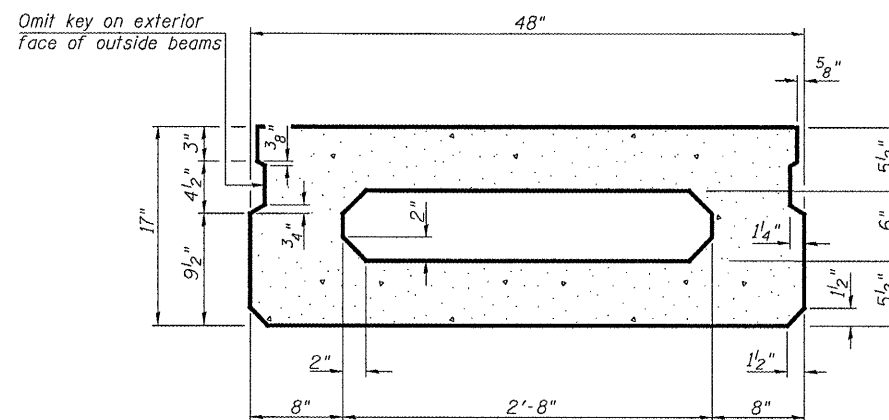
STATE OF ILLINOIS  
DEPARTMENT OF TRANSPORTATION

ROUTE NO.	SECTION	COUNTY	JOB SHEETS	SHEET NO.	SHEET NO. 2
FAS 370	102 BRJ	Livingston	13	11	4 SHEETS
FED. ROAD DIST. NO. 7	ILLINOIS	FED. AID PROJECT			

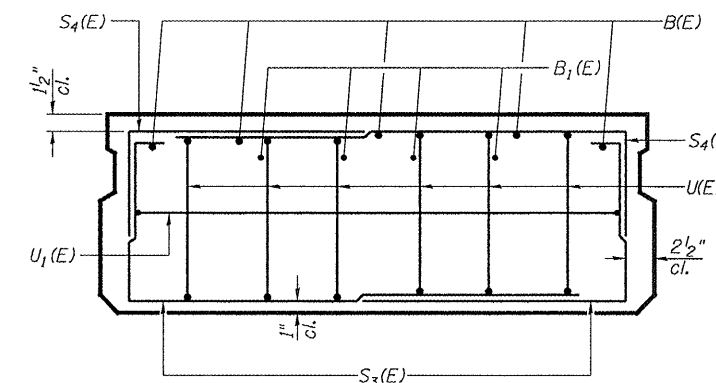
Contract Number: --- 66814



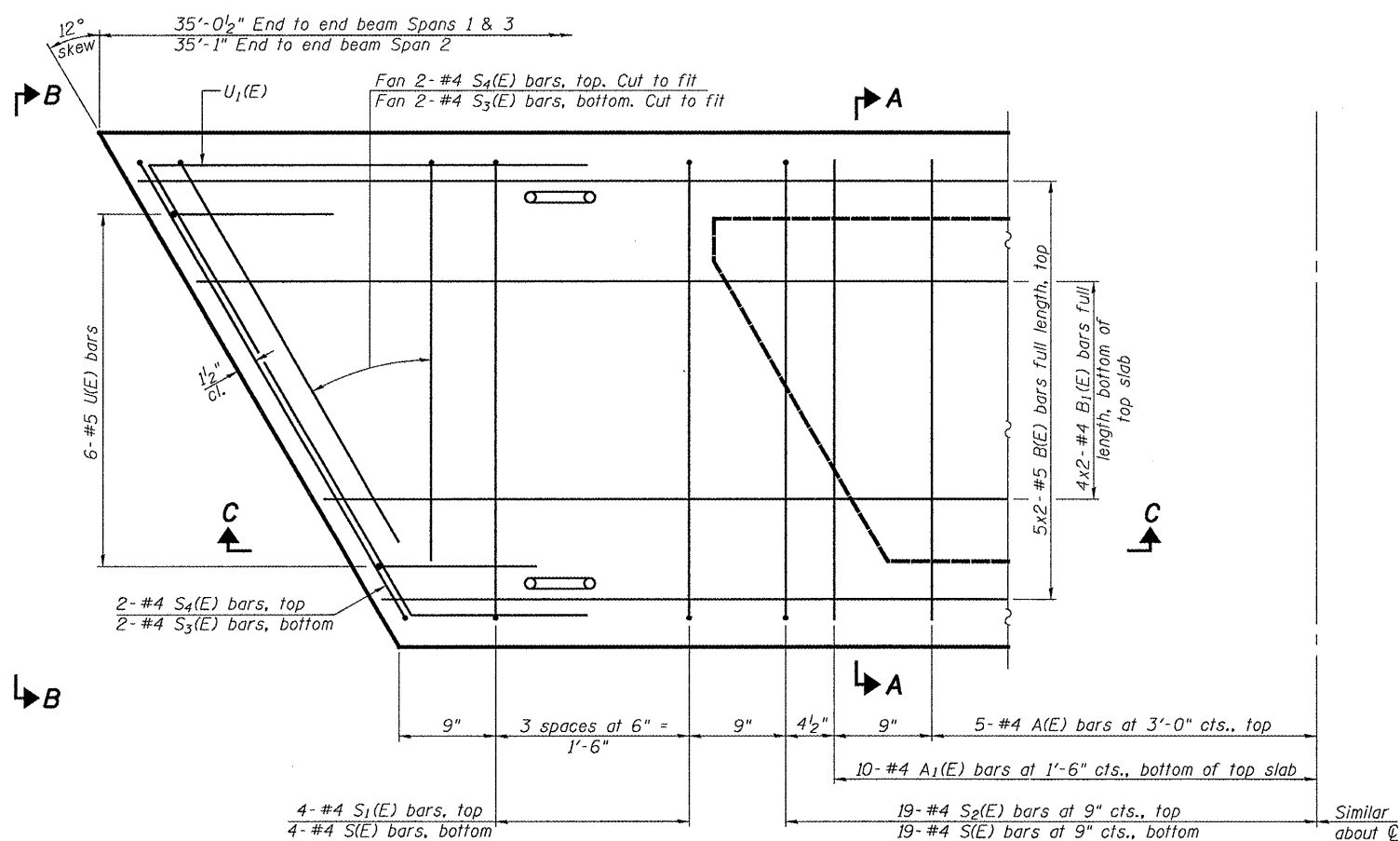
SECTION C-C



TYPICAL ABUTMENT SECTION

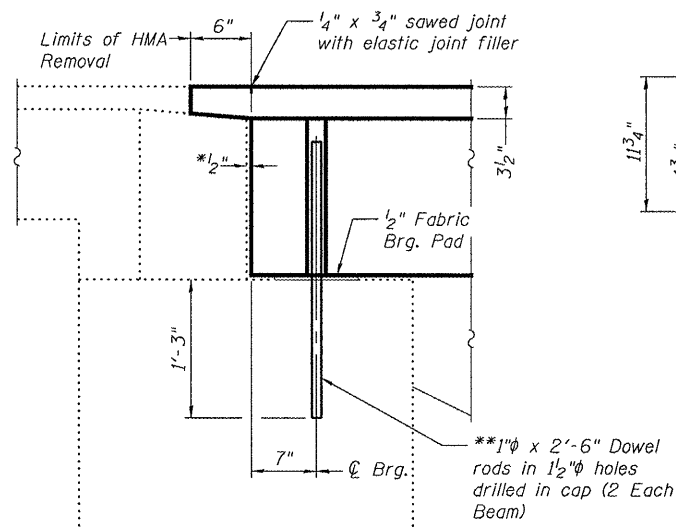


VIEW B-B



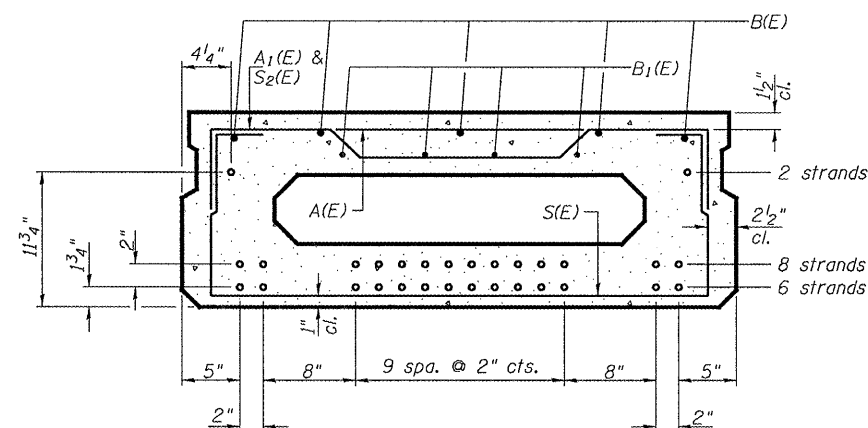
PLAN VIEW

SECTION A-A  
(Showing dimensions)



Min. Bar Lap

#4 = 1'-8"  
#5 = 2'-2"



SECTION A-A

(Showing reinforcement and permissible strand locations)

Note: Place the number of strands specified in each row symmetrically about the centerline of beam in the permissible strand locations shown.

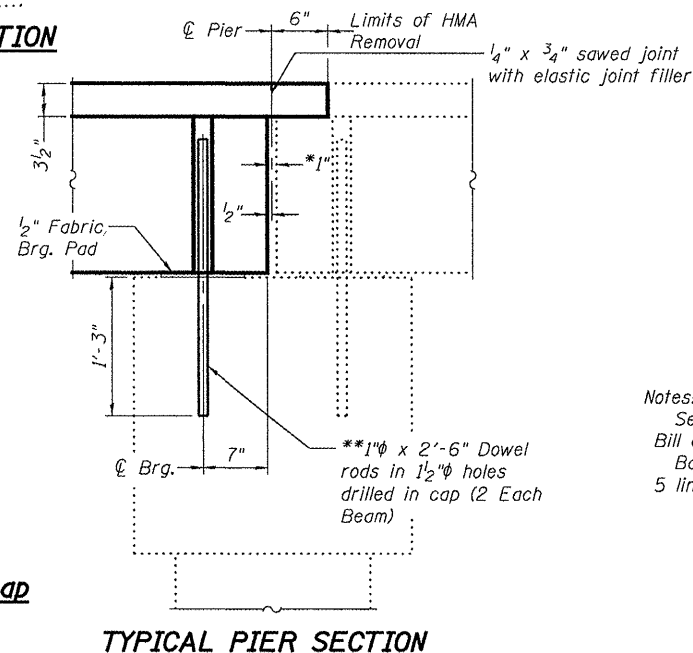
BAR LIST  
ONE BEAM ONLY  
(For information only)

Bar	No.	Size	Length	Shape
A(E)	10	#4	3'-7"	—
A1(E)	20	#4	3'-10"	—
B(E)	10	#5	18'-6"	—
B1(E)	8	#4	18'-3"	—
S(E)	46	#4	6'-9"	┌┐
S1(E)	8	#4	5'-3"	┌┐
S2(E)	38	#4	5'-6"	┌┐
S3(E)	8	#4	5'-3"	┌┐
S4(E)	8	#4	4'-10"	┌┐
U(E)	12	#5	3'-8"	┌┐
U1(E)	2	#4	6'-10"	┌┐

Notes:  
See sheet 3 of 4 for additional details and Bill of Material.

Bars indicated thus 5 x 2-#5 etc. indicates 5 lines of bars with 2 lengths per line.

BEAM DETAILS  
F.A.S. RT. 370  
LIVINGSTON COUNTY  
SN 053-0157



TYPICAL PIER SECTION

DESIGNED	A.J.B.
CHECKED	V.H.V.
DRAWN	Drew Christopher
CHECKED	A.J.B. V.H.V.

May 9, 2008
EXAMINED <i>Carl P... ENGINEER OF STRUCTURAL SERVICES</i>
PASSED <i>Ralph E. Anderson ENGINEER OF BRIDGES AND STRUCTURES</i>

PD-1748-R 8-29-07

\*Joint shall be filled with non-shrink grout. Dimension may vary to accommodate tolerance in beam lengths.  
\*\*Existing dowel rods are to be burned off, ground flush, and sealed with epoxy prior to placement of new beams. Cost included in Removal of Existing PPC Deck Beams. After beams have been erected holes shall be drilled into cap and dowel rods placed. Dowel holes shall be filled with non-shrink grout to top of beam and allowed to cure a minimum of 24 hours prior to grouting the shear keys.