

F.A.P. RTE.	SECTION	COUNTY	TOTAL SHEETS	SHEET NO.
681	(117BR)	IROQUOIS	13	1
FED. ROAD DIST. NO.	ILLINOIS	CONTRACT NO.66817		

STATE OF ILLINOIS
DEPARTMENT OF TRANSPORTATION
DIVISION OF HIGHWAYS

**PROPOSED
HIGHWAY PLANS**

FAP ROUTE 681 (IL 116)
SECTION (117BR)

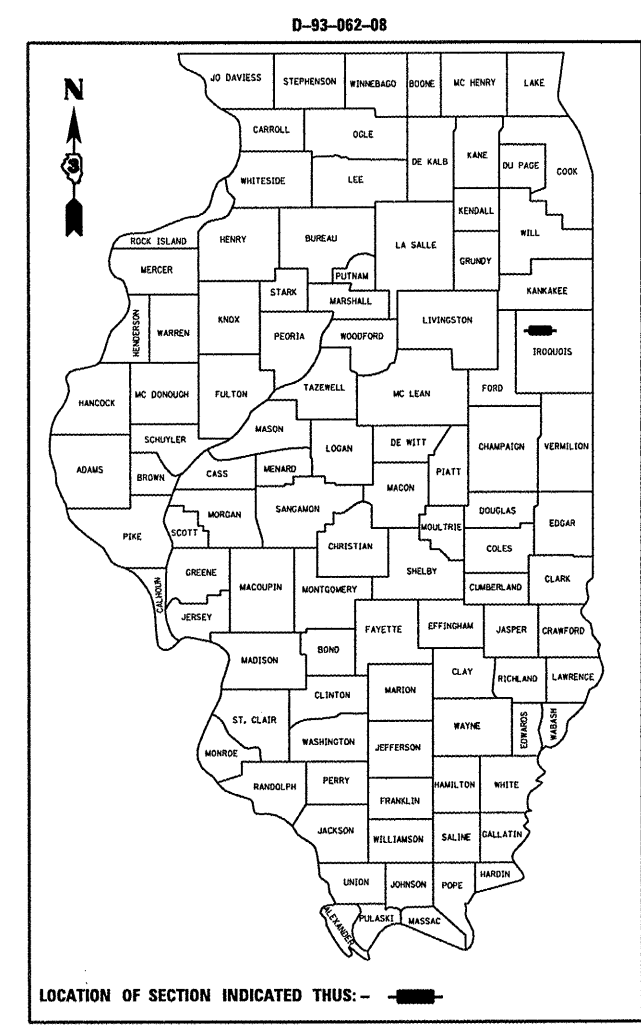
C-93-095-08
IROQUOIS COUNTY
DECK BEAM REPLACEMENT

INDEX OF SHEETS

1. COVER SHEET
2. GENERAL NOTES
3. SUMMARY OF QUANTITIES
4. TYPICAL SECTIONS
- 5 - 6. STAGING DETAILS
7. TEMPORARY CONCRETE BARRIER
8. WIDTH RESTRICTION SIGNING
9. PAVEMENT MARKING
10. PLAN AND ELEVATION
- 11 - 13. REPAIR DETAILS

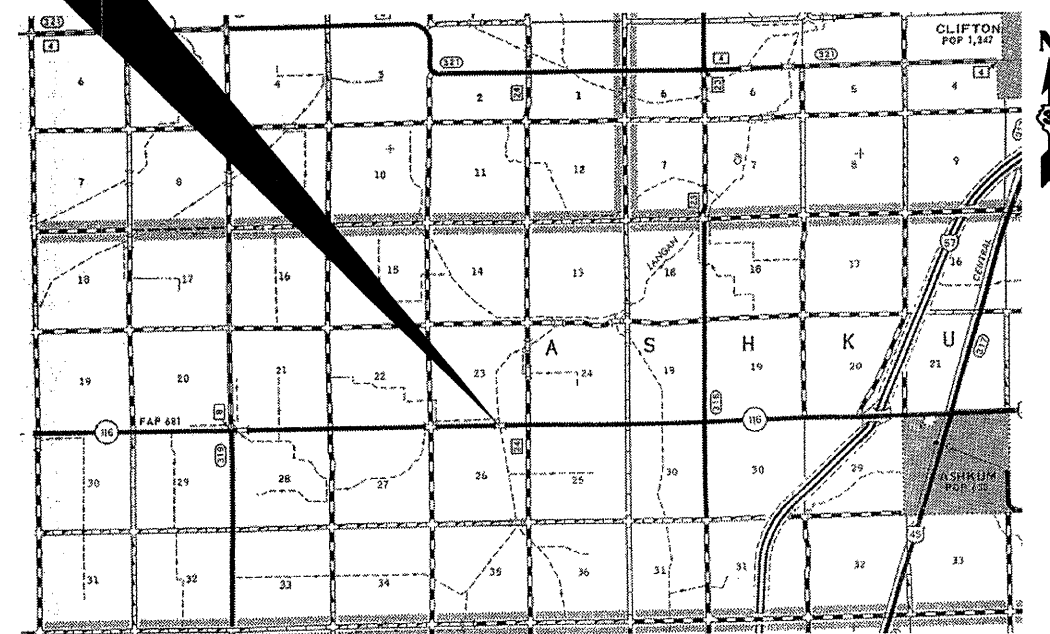
STANDARDS

- | | |
|-----------|--|
| 000001-05 | STANDARD SYMBOLS, ABBREVIATIONS AND PATTERNS |
| 001006 | DECIMAL OF AN INCH AND OF A FOOT |
| 482011-03 | HMA SHOULDER STRIPS/SHOULDERS WITH RS OR WIDENING & RS PROJECTS |
| 701001-01 | OFF-ROAD OPERATIONS 2L, 2W, MORE THAN 4.5 m (15') AWAY |
| 701006-02 | OFF-ROAD OPERATIONS 2L, 2W, 4.5 m (15') TO 600 mm (24") FROM PAVEMENT EDGE |
| 701011-01 | OFF-ROAD MOVING OPERATIONS 2L, 2W, DAY ONLY |
| 701201-02 | LANE CLOSURE, 2L, 2W, DAY ONLY, FOR SPEEDS ≥ 45 MPH |
| 701206-01 | LANE CLOSURE, 2L, 2W, NIGHT ONLY, FOR SPEEDS ≥ 45 MPH |
| 701301-02 | LANE CLOSURE, 2L, 2W, SHORT TIME OPERATIONS |
| 701311-02 | LANE CLOSURE, 2L, 2W, MOVING OPERATIONS - DAY ONLY |
| 701321-09 | LANE CLOSURE, 2L, 2W, BRIDGE REPAIR WITH BARRIER |
| 701326-02 | LANE CLOSURE, 2L, 2W, PAVEMENT WIDENING, FOR SPEEDS ≥ 45 MPH |
| 701901 | TRAFFIC CONTROL DEVICES |
| 704001-04 | TEMPORARY CONCRETE BARRIER |



LOCATION OF SECTION INDICATED THUS: - [black rectangle] -

PROJECT LOCATION
SN 038-0122
FAP 681 (IL 116)
3.81 MILES WEST OF I-57



LOCATION MAP
NOT TO SCALE
POINT LOCATION

FUNCTIONAL CLASSIFICATION
RURAL - MINOR ARTERIAL
F.A.P. ROUTE 681 (IL I16)
2007 ADT = 1050
P.V = 71.4% M.U. = 19.1% S.U. = 9.5%

STATE OF ILLINOIS
DEPARTMENT OF TRANSPORTATION
DIVISION OF HIGHWAYS

SUBMITTED 3/25/08 20 08

Henry F. Ryan
DEPUTY DIRECTOR OF HIGHWAYS, REGION ENGINEER

May 9, 20 08
Eric E. Haral
INTERIM ENGINEER OF DESIGN AND ENVIRONMENT

May 9, 20 08
Christine M. Reed
DIRECTOR OF HIGHWAYS, CHIEF ENGINEER

**PRINTED BY THE AUTHORITY
OF THE STATE OF ILLINOIS**

MICROFILMED _____
REEL NUMBER _____
AWARDED _____
RESIDENT ENGINEER _____
AS BUILT CHANGES WERE MADE
ON THE FOLLOWING SHEETS _____

J.U.L.I.E.
JOINT UTILITY LOCATION INFORMATION FOR EXCAVATION
1-800-892-0123

DISTRICT 3 NO. (815) 434-6131
PROJECT ENGINEER: JOE KANNEL
UNIT CHIEF: RON WOODSHANK

CONTRACT NO. 66817