

F.A.P. RTE.	SECTION	COUNTY	TOTAL SHEETS	SHEET NO.
681	(116-BR-1)	FORD	6	1
FED. ROAD DIST. NO. _____		ILLINOIS	CONTRACT NO. 66818	

STATE OF ILLINOIS  
DEPARTMENT OF TRANSPORTATION  
DIVISION OF HIGHWAYS  
**PROPOSED  
HIGHWAY PLANS**

FAP ROUTE 681 (IL 116)  
SECTION (116-BR-1)

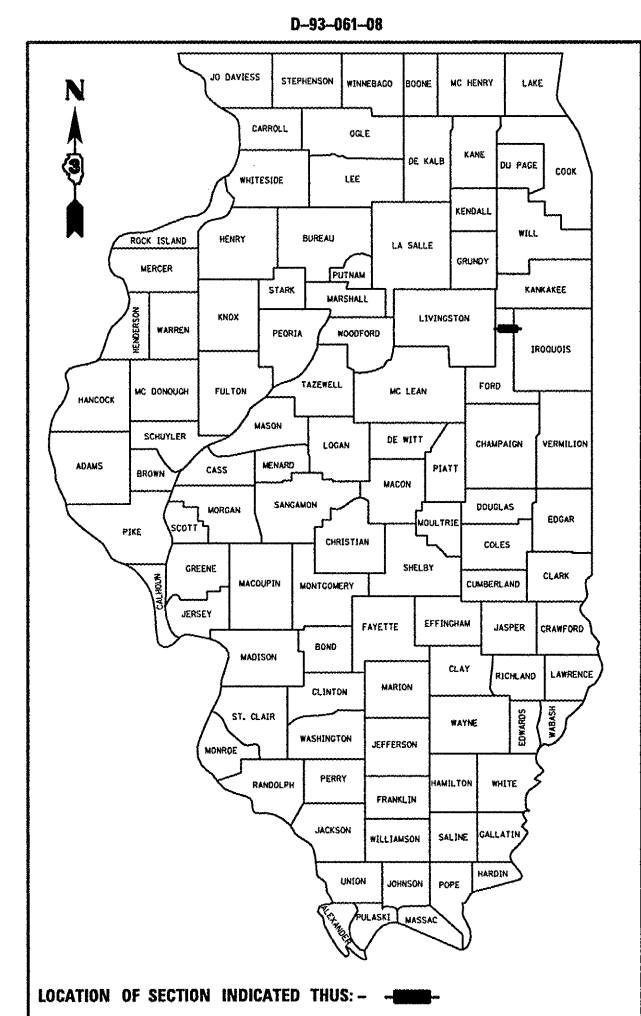
FORD COUNTY  
C-93-094-08  
**DECK SLAB SUPPORT**

INDEX OF SHEETS

1. COVER SHEET
2. GENERAL NOTES
3. SUMMARY OF QUANTITIES
4. TYPICAL SECTION
5. PLAN AND ELEVATION - SN 053-0050
6. REPAIR DETAILS

STANDARDS

- |           |  |
|-----------|--|
| 001006    | DECIMAL OF AN INCH AND OF A FOOT   |
| 701001-01 | OFF-ROAD OPERATIONS 2L, 2W, MORE THAN 4.5 m (15') AWAY                     |
| 701006-02 | OFF-ROAD OPERATIONS 2L, 2W, 4.5 m (15') TO 600 mm (24") FROM PAVEMENT EDGE |
| 701201-02 | LANE CLOSURE, 2L, 2W, DAY ONLY, FOR SPEEDS ≥ 45 MPH                        |
| 701301-02 | LANE CLOSURE, 2L, 2W, SHORT TIME OPERATIONS                                |
| 701901    | TRAFFIC CONTROL DEVICES  |



**PROJECT LOCATION**  
SN 027-0045  
2.67 MILES EAST OF IL ROUTE 115

FUNCTIONAL CLASSIFICATION  
RURAL - MINOR ARTERIAL  
F.A.P. ROUTE 681 (IL 116)  
2005 ADT = 900  
P.V = 81.1% M.U. = 11.1% S.U. = 7.8%

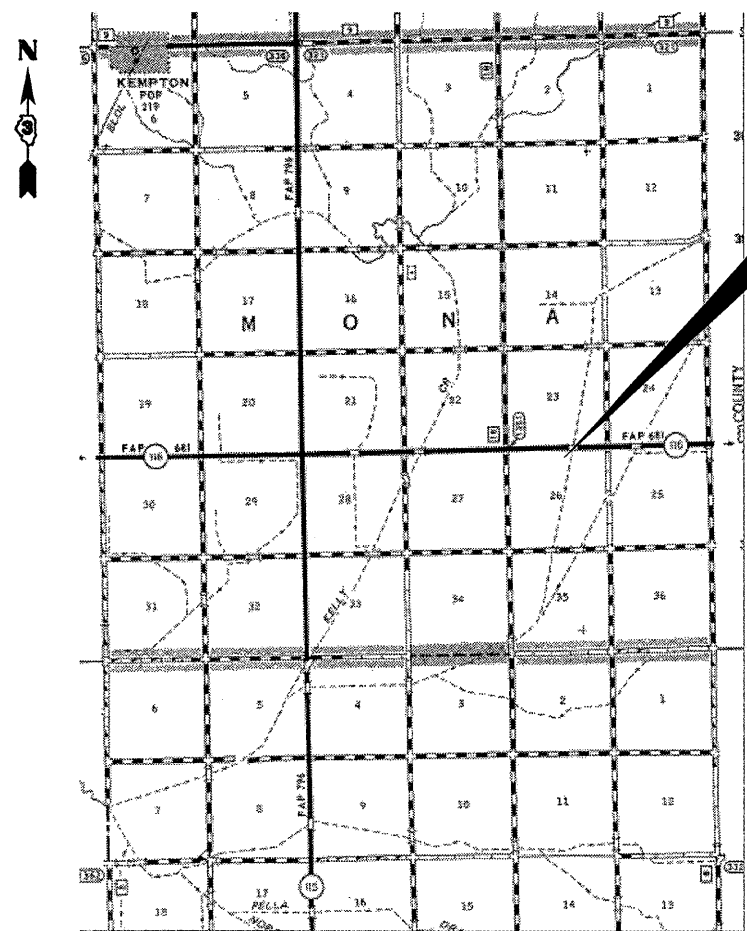
STATE OF ILLINOIS  
DEPARTMENT OF TRANSPORTATION  
DIVISION OF HIGHWAYS

SUBMITTED 3/25 2008

*Henry J. Ryan*  
DEPUTY DIRECTOR OF HIGHWAYS, REGION ENGINEER

May 9, 2008  
*Eric E. Harn*  
INTERIM ENGINEER OF DESIGN AND ENVIRONMENT

May 9, 2008  
*Christine M. Reed*  
DIRECTOR OF HIGHWAYS, CHIEF ENGINEER



**LOCATION MAP**  
NOT TO SCALE  
POINT LOCATION

MICROFILMED \_\_\_\_\_  
REEL NUMBER \_\_\_\_\_  
AWARDED \_\_\_\_\_  
RESIDENT ENGINEER \_\_\_\_\_  
AS BUILT CHANGES WERE MADE  
ON THE FOLLOWING SHEETS \_\_\_\_\_

J.U.L.I.E.  
JOINT UTILITY LOCATION INFORMATION FOR EXCAVATION  
1-800-892-0123

PROJECT ENGINEER : JOE KANNEL  
UNIT CHIEF : RON WOODSHANK

CONTRACT NO. 66818

**PRINTED BY THE AUTHORITY  
OF THE STATE OF ILLINOIS**