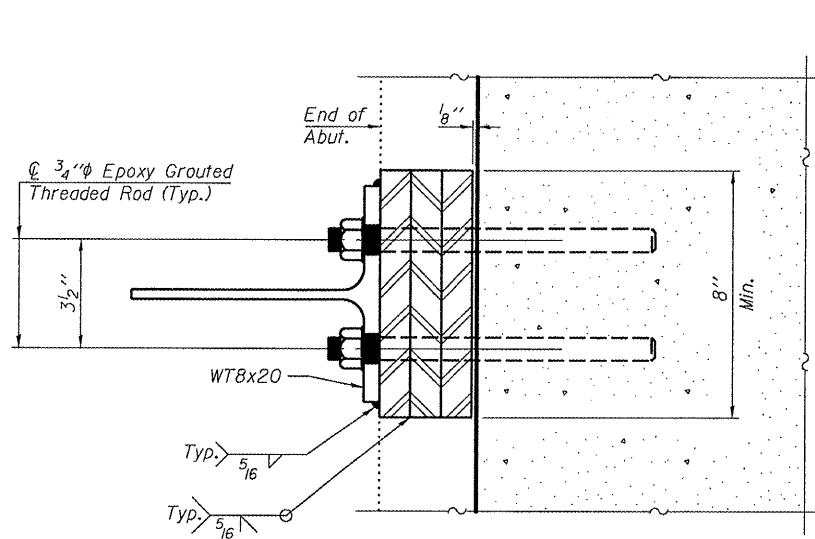


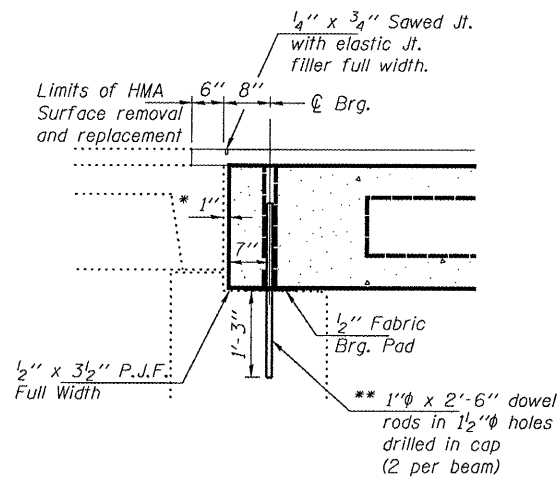
STATE OF ILLINOIS
DEPARTMENT OF TRANSPORTATION

ROUTE NO.	SECTION	COUNTY	TOTAL SHEETS	SHEET NO.	SHEET NO. 4
FA 693		FORD	15	14	5 SHEETS
FED. ROAD DIST. NO. 7	ILLINOIS	FED. AID PROJECT			

Contract Number: 66819



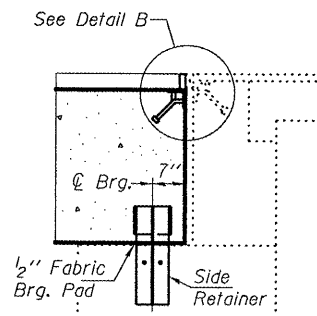
SECTION H-H



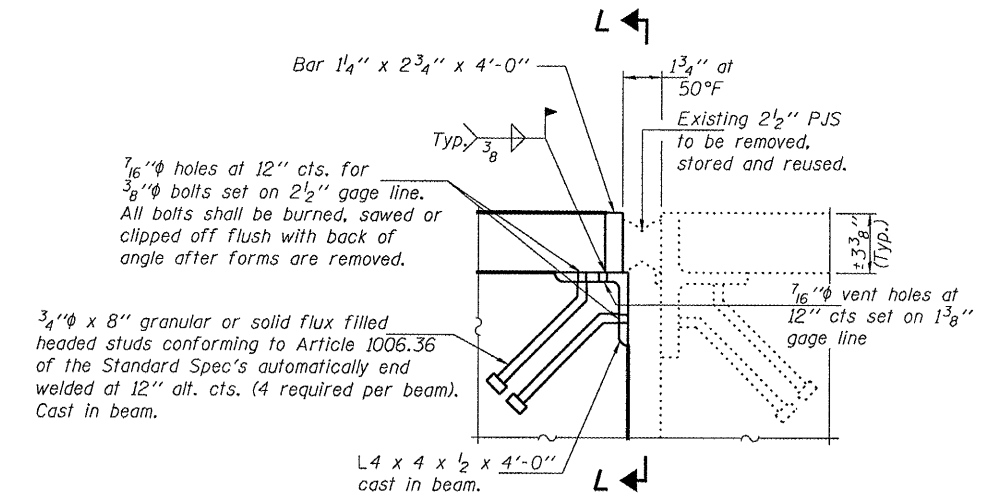
TYPICAL SECTION AT EAST ABUTMENT

* 1" Joint shall be filled with non-shrink grout. Dimension may vary to accommodate tolerance in beam lengths.

** Existing dowel rods are to be burned off, ground flush, and sealed with epoxy prior to placement of new beams. Cost included in Removal of Existing PPC Deck Beams. After beams have been erected holes shall be drilled into cap and dowel rods placed. Dowel holes shall be filled with non-shrink grout to top of beam and allowed to cure a minimum of 24 hours prior to grouting the shear keys.

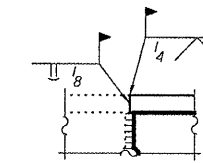


TYPICAL SECTION AT WEST ABUTMENT

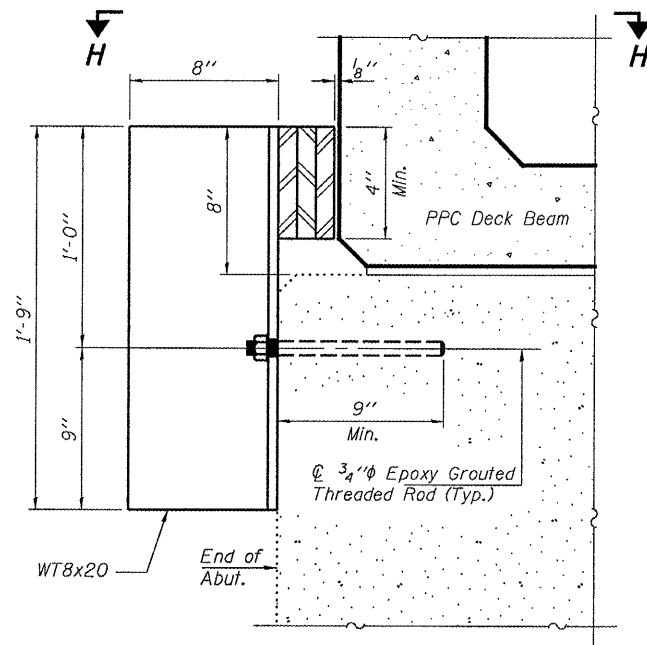


DETAIL B

(Cost included with PPC Deck Beams)

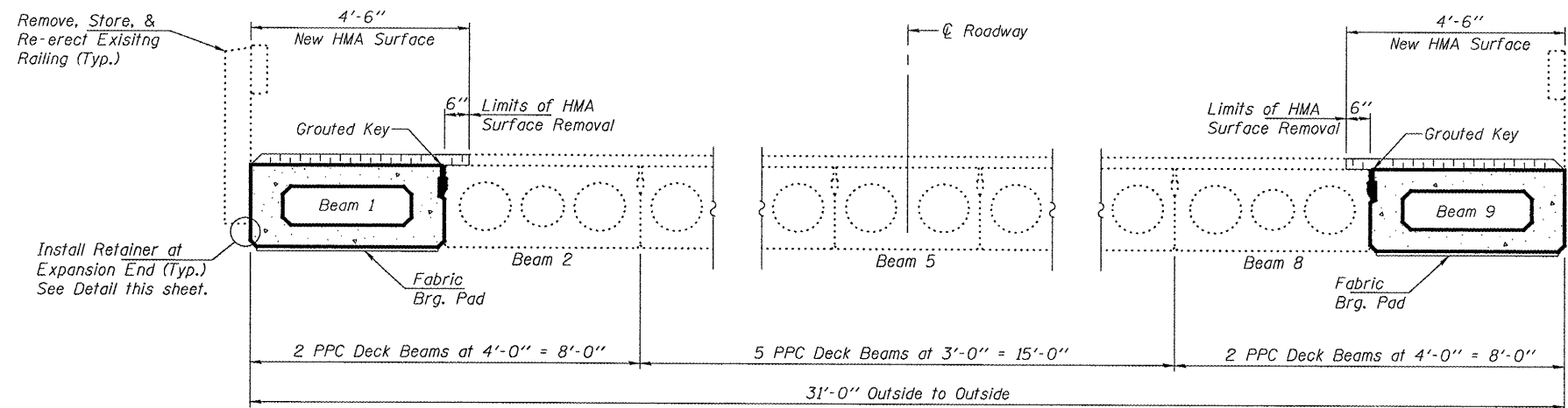


SECTION L-L



EXPANSION JOINT RETAINER DETAILS

(Cost included with PPC Deck Beams)



PARTIAL CROSS SECTION

(Looking West)

DESIGNED	AJB
CHECKED	ATH
DRAWN	Steffen
CHECKED	AJB ATH

MAY 2, 2008
EXAMINED *A. Carl Hoyer*
ENGINEER OF STRUCTURAL SERVICES
PASSED *Ralph E. Anderson*
ENGINEER OF BRIDGES AND STRUCTURES

REPAIR DETAILS
FAP 693 OVER W. BR. DRUMMER CREEK
FORD COUNTY
SN 027-0005