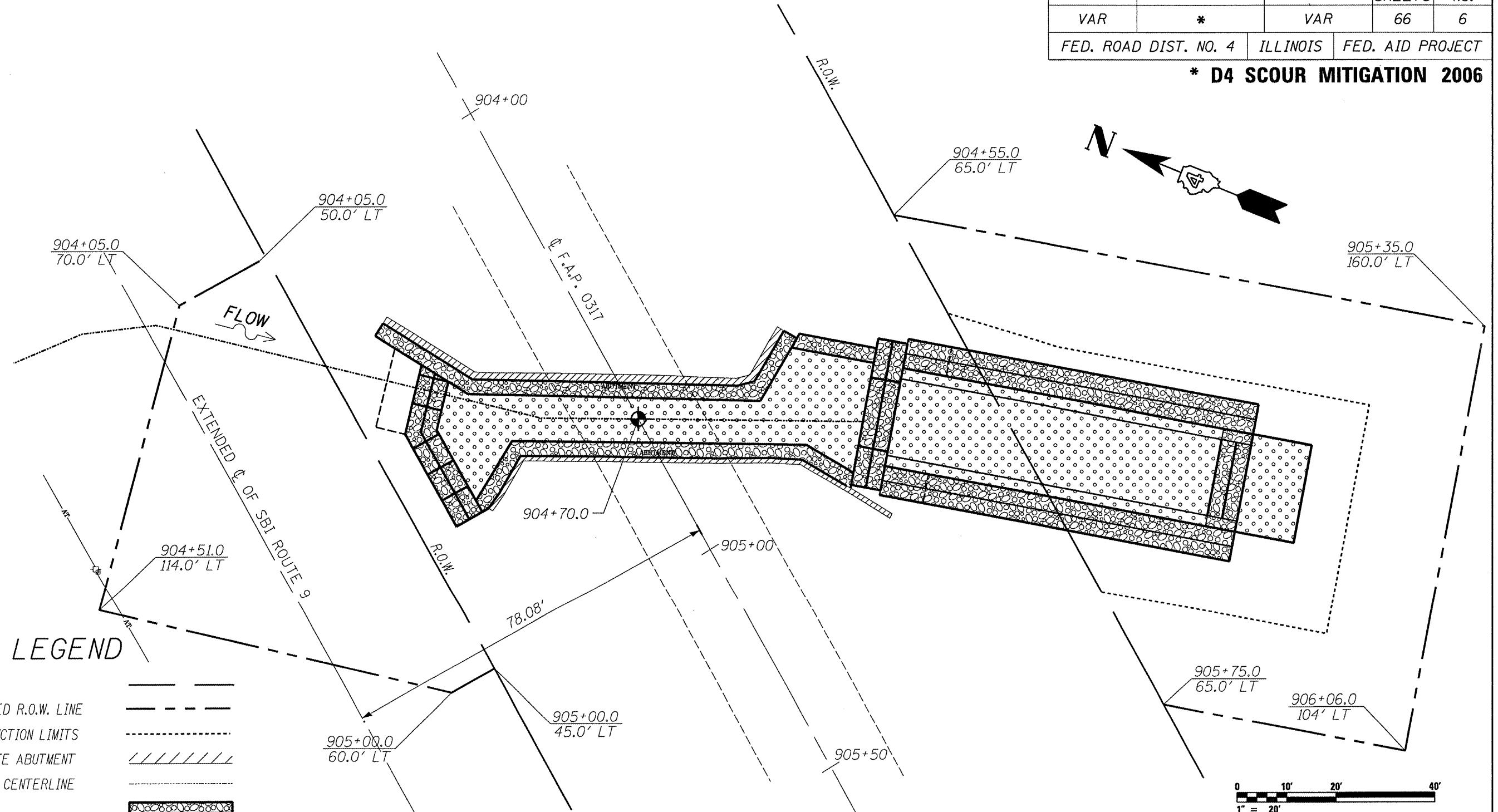


ROUTE NO.	SECTION	COUNTY	TOTAL SHEETS	SHEET NO.
VAR	*	VAR	66	6
FED. ROAD DIST. NO. 4		ILLINOIS	FED. AID PROJECT	

*** D4 SCOUR MITIGATION 2006**



LEGEND

- R.O.W.
- PROPOSED R.O.W. LINE
- CONSTRUCTION LIMITS
- CONCRETE ABUTMENT
- STREAM CENTERLINE
- GABION
- SLOPE MATTRESS
- AERIAL TELEPHONE
- TELEPHONE POLE
- TELEPHONE RISER

= INTERSECTION OF C. OF EXISTING STRUCTURE AND C. OF F.A.P. 0317

0 10' 20' 40'
1" = 20'

ILLINOIS DEPARTMENT OF TRANSPORTATION
 PROPOSED R.O.W. PLAN
 S.N. 029-0002
 F.A.P. 0317 (U.S. RTE. 24)
 OVER DRY RUN CREEK
 FULTON COUNTY
 SHEET 2 OF 11