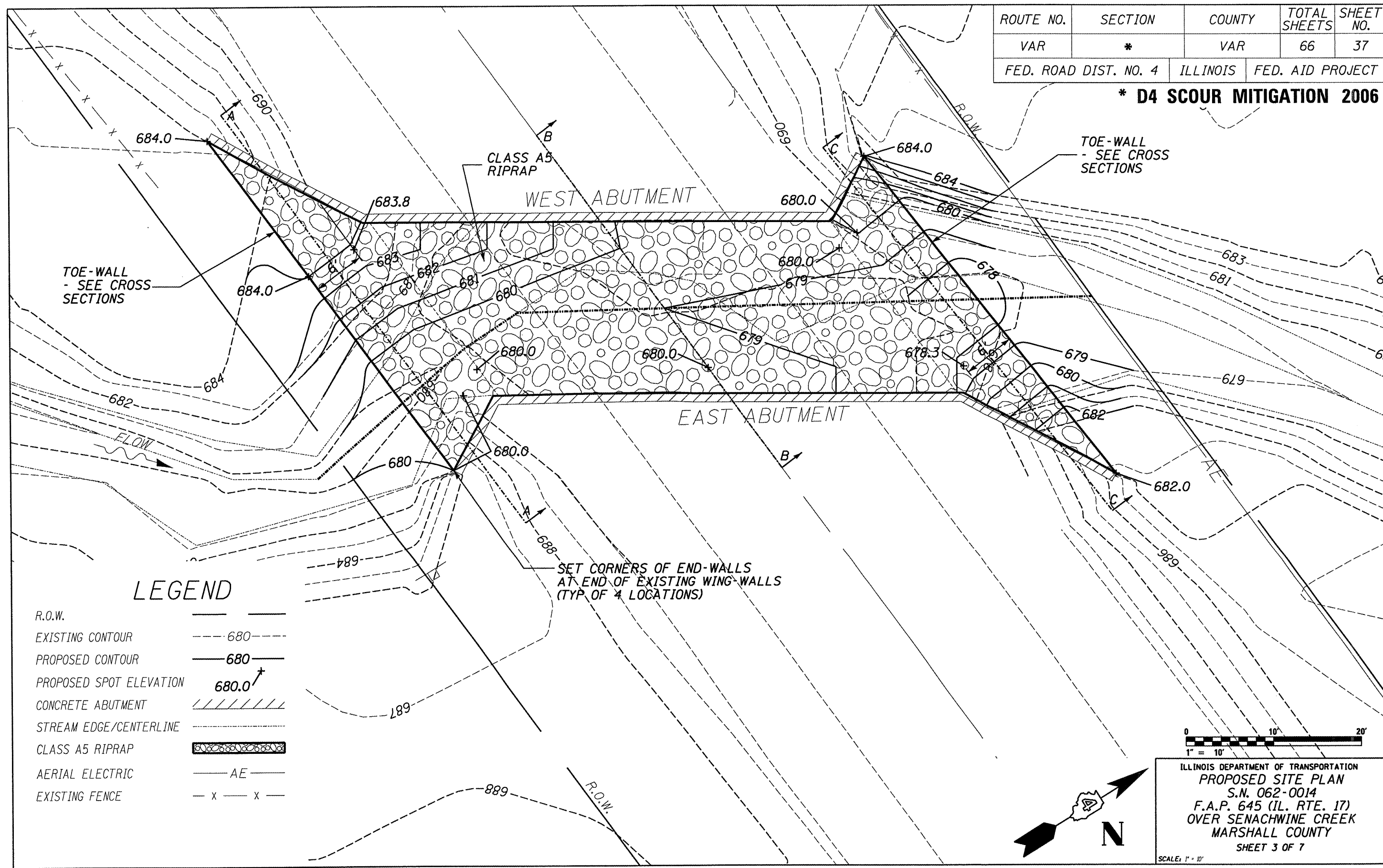


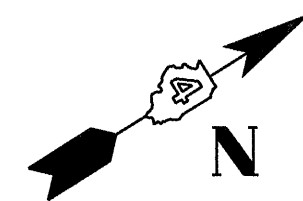
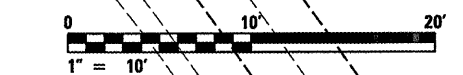
ROUTE NO.	SECTION	COUNTY	TOTAL SHEETS	SHEET NO.
VAR	*	VAR	66	37
FED. ROAD DIST. NO. 4		ILLINOIS	FED. AID PROJECT	

**\* D4 SCOUR MITIGATION 2006**



**LEGEND**

- R.O.W. ————
- EXISTING CONTOUR - - - - - 680
- PROPOSED CONTOUR ———— 680
- PROPOSED SPOT ELEVATION 680.0 ↗
- CONCRETE ABUTMENT // // //
- STREAM EDGE/CENTERLINE - - - - -
- CLASS A5 RIPRAP [Pattern]
- AERIAL ELECTRIC ———— AE ————
- EXISTING FENCE - x - x -



ILLINOIS DEPARTMENT OF TRANSPORTATION  
**PROPOSED SITE PLAN**  
 S.N. 062-0014  
 F.A.P. 645 (IL. RTE. 17)  
 OVER SENACHWINE CREEK  
 MARSHALL COUNTY  
 SHEET 3 OF 7  
 SCALE: 1" = 10'