

BENCHMARK: TOP 3RD. STEP BRACKET ON TELEGRAPH POLE BTWN. TRACKS NORTH OF BRIDGE (2ND. BRACKET EAST SIDE OF POLE, 4' OFF GROUND) ELEV.= 475.62 FT.

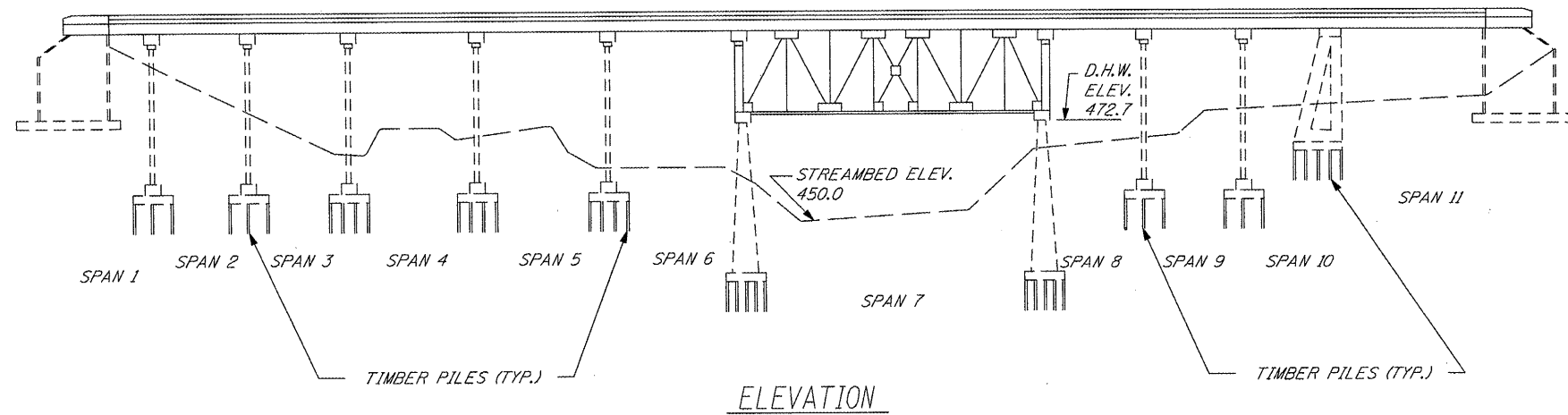
EXISTING STRUCTURE: SN 072-0037 IS AN 11 SPAN R.C. DECK ON STRUCTURAL STEEL 637'-10 1/4" BY 62'-0" SUPERSTRUCTURE WITH R.C. CLOSED ABUTMENTS AND PIERS.

ROUTE NO.	SECTION	COUNTY	TOTAL SHEETS	SHEET NO.
VAR	*	VAR	66	42
FED. ROAD DIST. NO. 4		ILLINOIS	FED. AID PROJECT	

**\* D4 SCOUR MITIGATION 2006**

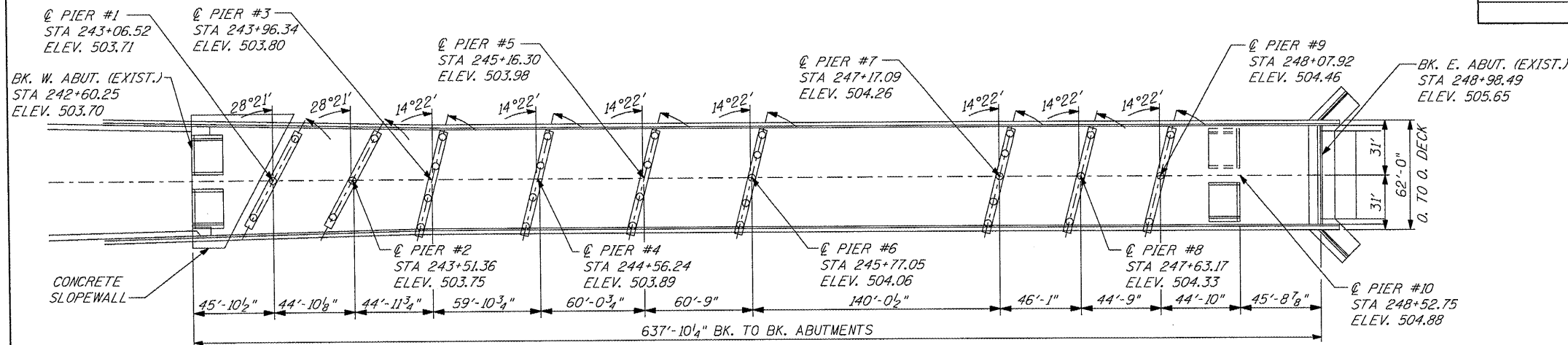
INDEX OF SHEETS

SHEET NUMBER	DESCRIPTION
1	GENERAL PLAN AND PROFILE, SUMMARY OF QUANTITIES, LOCATION MAP
2	SITE PLAN
3-4	SITE DETAILS
5-15	CROSS SECTIONS



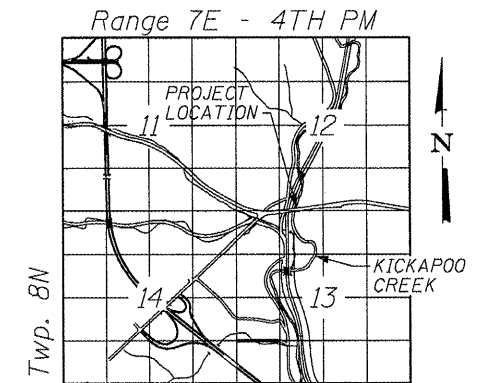
BILL OF MATERIALS

ITEM	UNIT	TOTAL
CHANNEL EXCAVATION	CU YD	1403
PERIMETER EROSION CONTROL BARRIER	FOOT	422
FILTER FABRIC	SQ YD	3717
STONE RIP-RAP, CLASS A3, 12"	TONS	341
STONE RIPRAP, CLASS A5	SQ YD	2850
DEWATERING STRUCTURE NO. 5	EACH	1
RAILROAD PROT. LIABILITY INSURANCE	L SUM	1

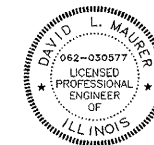


PLAN

EXISTING BRIDGE



LOCATION SKETCH



David L. Maurer, P.E.  
Exp. Date 11/2009  
P.E. No.: 062-030577

WATERWAY/SCOUR INFORMATION

DESIGN FLOOD	100 YRS
DRAINAGE AREA	295.2 SQ MI
FLOW	5,600 CFS
FLOW DEPTH	26 FT
CONTRACTION SCOUR DEPTH	38 FT

ILLINOIS DEPARTMENT OF TRANSPORTATION  
GENERAL PLAN & ELEVATION  
S.N. 072-0037  
F.A.P. 669 (IL RTE. 116) OVER  
BN & CNW R.R., KICKAPOO CREEK  
& CH 77 F.A. RTE. 669  
PEORIA COUNTY  
SHEET 1 OF 15