

BENCHMARK: CHISLED "□" ON WINGWALL CORNER
ELEVATION = 502.38

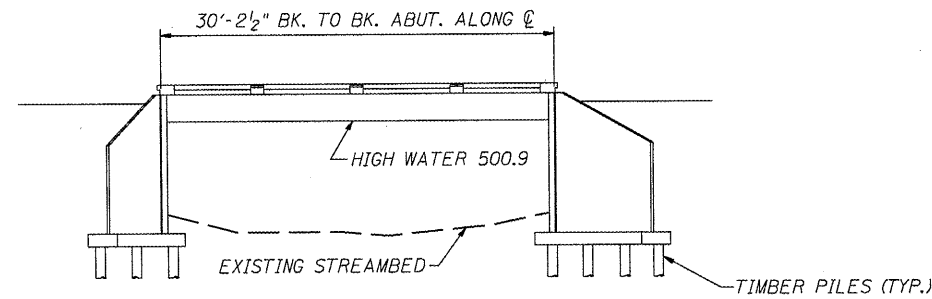
EXISTING STRUCTURE: SN 078-0005 IS A 44'-4" WIDE BY 30'-2½" LONG SUPERSTRUCTURE WITH A TWO-WAY REINFORCED CONCRETE SLAB ON R.C. CLOSED ABUTMENTS.

ROUTE NO.	SECTION	COUNTY	TOTAL SHEETS	SHEET NO.
VAR	*	VAR	66	57
FED. ROAD DIST. NO. 4		ILLINOIS	FED. AID PROJECT	

*** D4 SCOUR MITIGATION 2006**

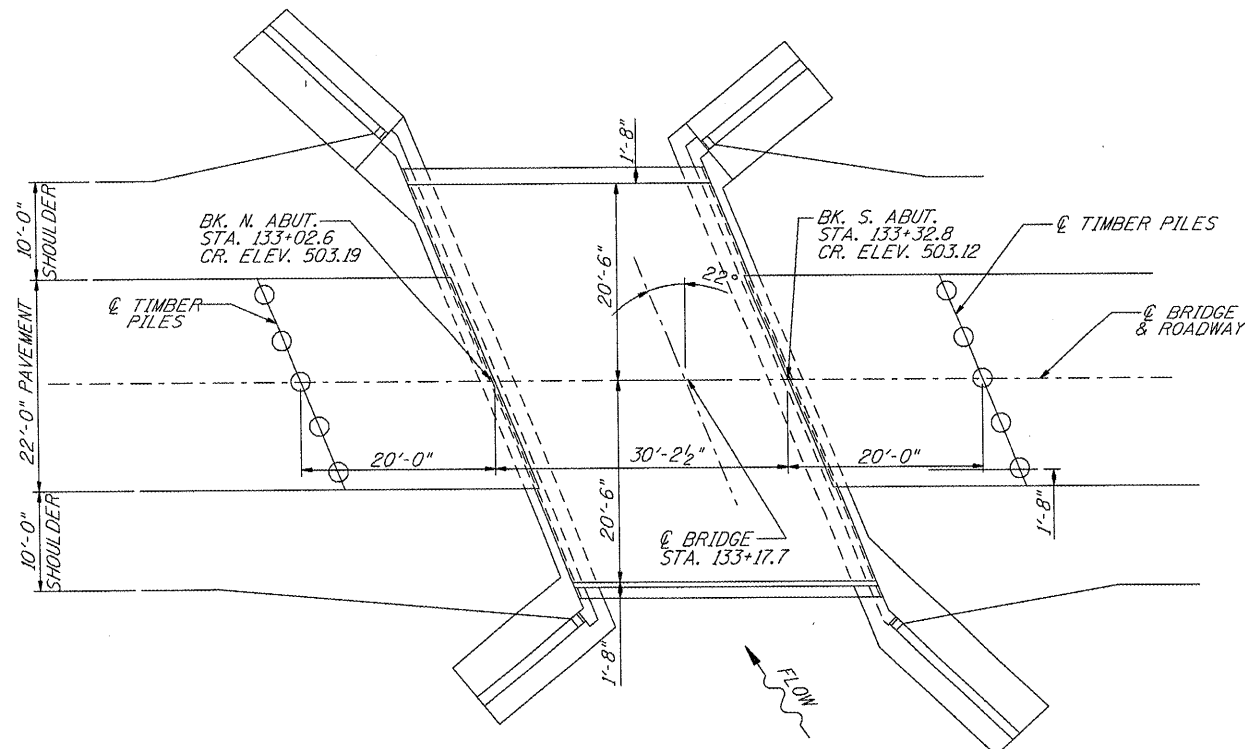
INDEX OF SHEETS

SHEET NUMBER	DESCRIPTION
1	GENERAL PLAN AND ELEVATION, SUMMARY OF QUANTITIES, LOCATION MAP
2	R.O.W. PLAN
3	SITE PLAN
4	SITE PROFILE
5-7	SITE CROSS SECTIONS

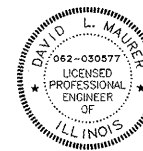


ELEVATION

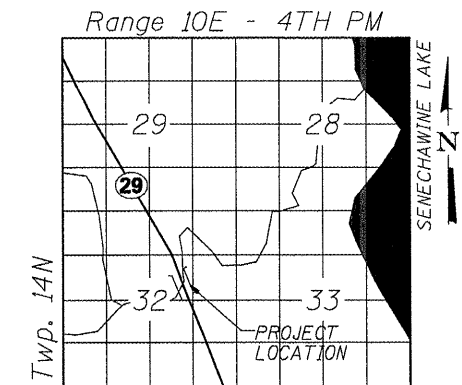
BILL OF MATERIALS		
ITEM	UNIT	TOTAL
CHANNEL EXCAVATION	CU YD	20
STONE RIP-RAP, CLASS A5	TONS	867
FILTER FABRIC	SQ YD	700
DEWATERING STRUCTURE NO. 6	EACH	1



PLAN
EXISTING BRIDGE



David L. Maurer, P.E.
Exp. Date 11/2009
P.E. No.: 062-030577



LOCATION SKETCH

WATERWAY/SCOUR INFORMATION

DESIGN FLOOD	100 YRS
DRAINAGE AREA	5.5 SQ MI
FLOW	2,520 CFS
FLOW DEPTH	12.9 FT
REQUIRED OPENING	229 SQ FT
PROVIDED OPENING	300 SQ FT
CONTRACTION SCOUR DEPTH	96 FT

ILLINOIS DEPARTMENT OF TRANSPORTATION
GENERAL PLAN & ELEVATION
S.N. 078-0005
F.A.P. 318 (IL 29)
OVER ILL. RIVER TRIBUTARY
PUTNAM COUNTY
SHEET 1 OF 7