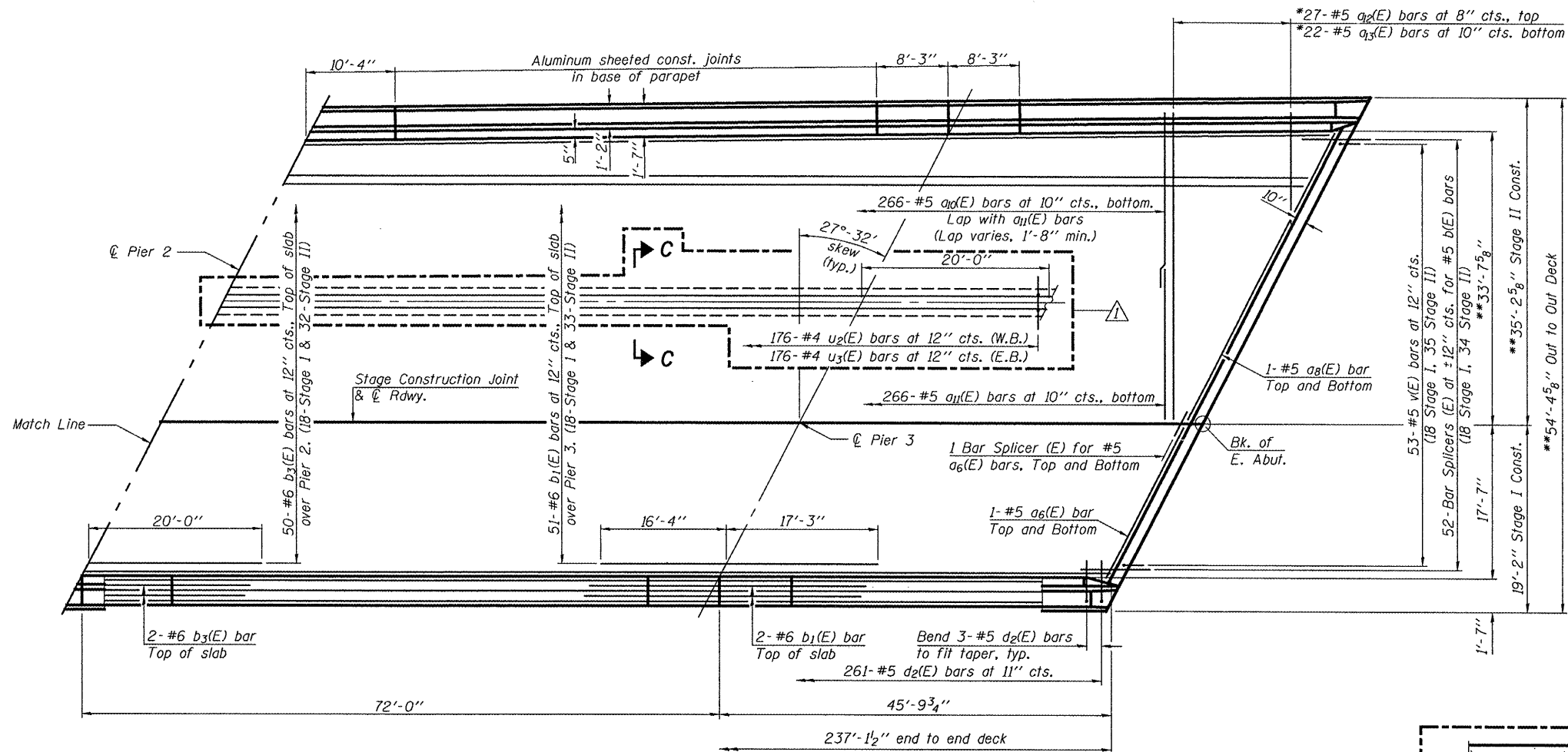


STATE OF ILLINOIS  
DEPARTMENT OF TRANSPORTATION

ROUTE NO.	SECTION	COUNTY	DATE	SHEET	SHEET NO.
F.A.P. 313	(21-HB-1)	KNOX	SS	35	18
FED. ROAD DIST. NO. 7	ILLINOIS	FED. AID PROJECT			35 SHEETS

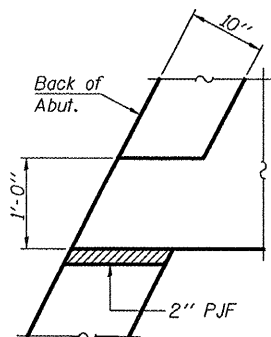
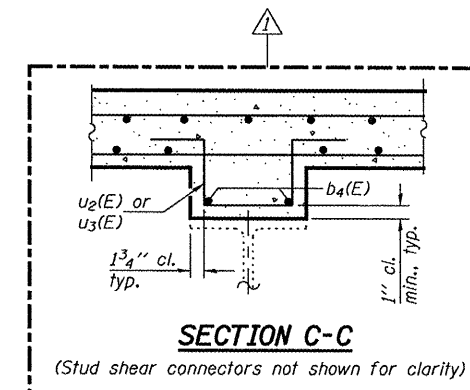
Contract #68216



Notes: See sheet 19 of 35 for superstructure details and Bill of Material.  
See sheets 20 & 21 of 35 for Parapet reinforcement  
See sheet 22 of 35 for diaphragm details.

**PLAN-W.B. STRUCTURE**  
(East Bound Structure similar by rotation 180°)

**MINIMUM BAR LAP**  
#5 bar = 1'-8"



**DETAIL A**  
Parapet and approach not shown.  
Detail shown at South West corner of the West Bound Bridge, and the North East corner of the East Bound Bridge. The rest of the corners are similar.

\*Order  $a_2(E)$  and  $a_3(E)$  bar full length.  
Cut to fit skew.  
\*\*Measured at back of Abutment

DESIGNED	FT
CHECKED	DPN
DRAWN	Gregory D. Farmer
CHECKED	FT/DPN

April 28 2008  
EXAMINED *Thomas J. Demagali*  
PASSED *Ralph E. Anderson*  
ENGINEER OF BRIDGES AND STRUCTURES

**SUPERSTRUCTURE DETAILS**  
F.A.P. ROUTE 313 - SECTION (21-HB-1)  
KNOX COUNTY  
STA. 495+98.72  
STRUCTURE NO. 048-0021  
STRUCTURE NO. 048-0022

Revised 5/21/2008, FT