

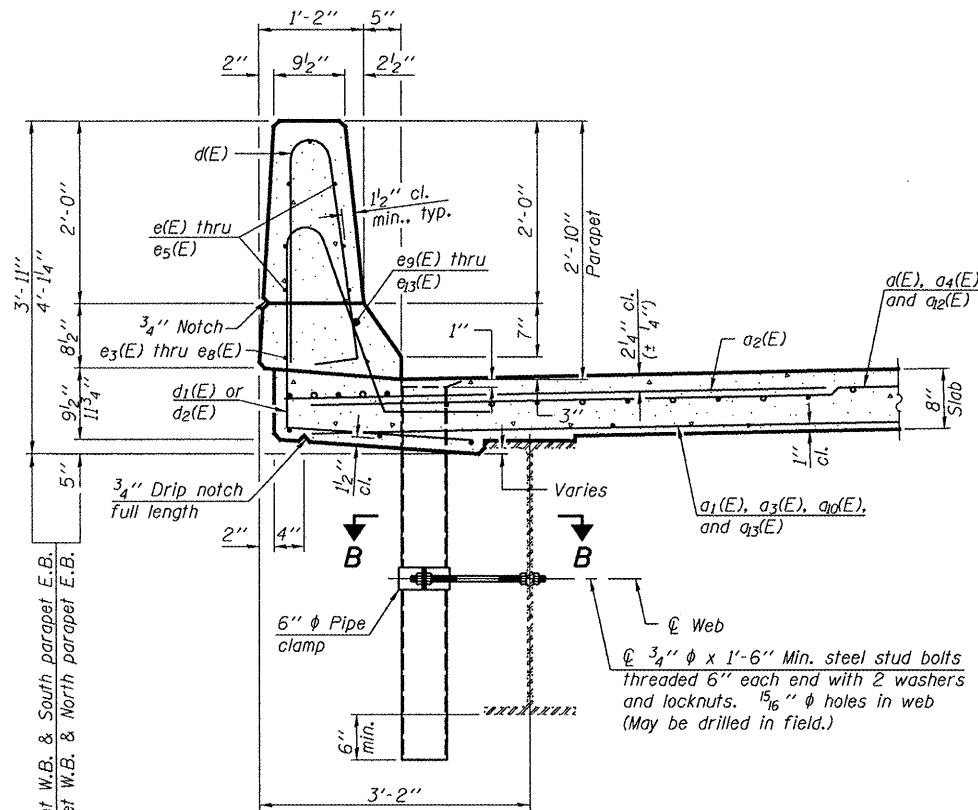
STATE OF ILLINOIS
DEPARTMENT OF TRANSPORTATION

ROUTE NO.	SECTION	COUNTY	SHEET	SHEET NO.
F.A.P. 313	(21-HB-11)	KNOX	5536	19
FED. ROAD DIST. NO. 7	ILLINOIS	FED. AID PROJECT		35 SHEETS

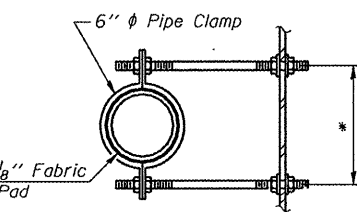
Contract #68216

TWO SUPERSTRUCTURES
BILL OF MATERIAL

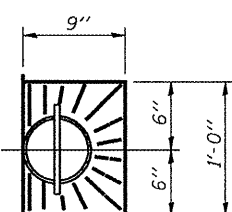
Bar	No.	Size	Length	Shape
a(E)	1376	#5	18'-8"	
a1(E)	570	#5	18'-5"	
a2(E)	712	#6	6'-0"	
a3(E)	40	#5	30'-9"	
a4(E)	48	#5	31'-0"	
a5(E)	32	#5	2'-0"	
a6(E)	8	#5	21'-1"	
a7(E)	4	#5	35'-11"	
a8(E)	4	#5	39'-2"	
a9(E)	664	#5	18'-1"	
a10(E)	532	#5	21'-3"	
a11(E)	532	#5	16'-8"	
a2(E)	54	#5	33'-10"	
a3(E)	44	#5	33'-7"	
b(E)	1044	#5	28'-0"	
b1(E)	216	#6	33'-7"	
b2(E)	832	#5	31'-3"	
b3(E)	108	#6	39'-3"	
b4(E)	144	#5	30'-9"	
c(E)	1040	#5	5'-7"	
d1(E)	526	#5	7'-10"	
d2(E)	522	#5	8'-0"	
e(E)	84	#4	18'-10"	
e1(E)	84	#4	18'-1"	
e2(E)	84	#4	17'-6"	
e3(E)	64	#4	10'-1"	
e4(E)	128	#4	8'-0"	
e5(E)	28	#4	19'-1"	
e6(E)	16	#4	19'-9"	
e7(E)	8	#4	27'-5"	
e8(E)	8	#4	28'-4"	
e9(E)	16	#8	20'-10"	
e10(E)	16	#8	8'-0"	
e11(E)	8	#8	28'-6"	
e12(E)	8	#8	10'-1"	
e13(E)	8	#8	29'-4"	
m(E)	24	#6	10'-3"	
m1(E)	20	#6	21'-0"	
m2(E)	12	#6	7'-2"	
m3(E)	16	#6	3'-0"	
m4(E)	4	#6	4'-2"	
m5(E)	10	#6	35'-11"	
m6(E)	10	#6	39'-2"	
m7(E)	12	#6	9'-9"	
m8(E)	4	#6	6'-6"	
m9(E)	2	#6	3'-4"	
m10(E)	2	#6	6'-8"	
m11(E)	8	#6	11'-0"	
m12(E)	10	#6	35'-0"	
m13(E)	10	#6	38'-3"	
m14(E)	20	#6	20'-2"	
m15(E)	8	#6	13'-5"	
s(E)	226	#5	7'-4"	
s1(E)	198	#4	9'-4"	
u(E)	218	#5	3'-2"	
u2(E)	1056	#4	3'-0"	
u3(E)	1056	#4	3'-2"	
v(E)	206	#5	3'-4"	
Reinforcement Bars, Epoxy Coated	Pound	199820		
Concrete Superstructure	Cu. Yds.	907.5		



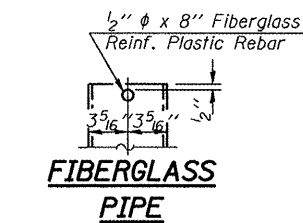
SECTION THRU PARAPET



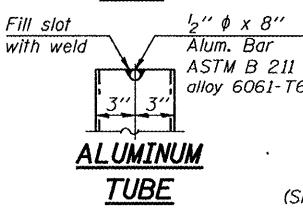
SECTION B-B
* Dimension as required by Pipe Clamp



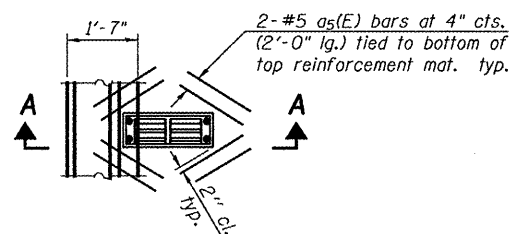
TOP PLAN



FIBERGLASS PIPE

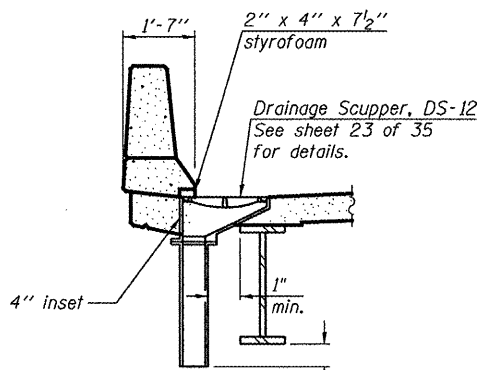


ALUMINUM TUBE



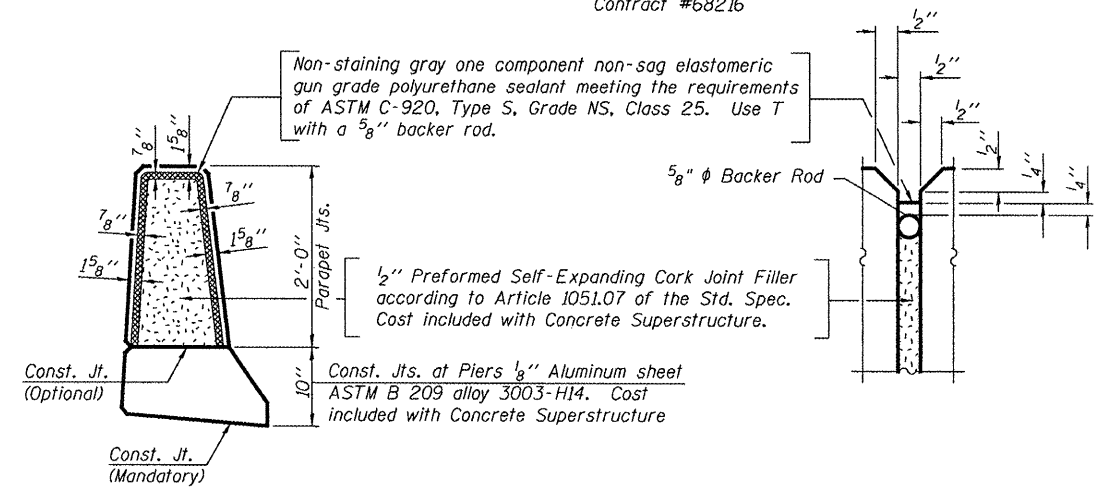
PLAN

Note:
Cut longitudinal reinforcement to clear drainage scuppers.



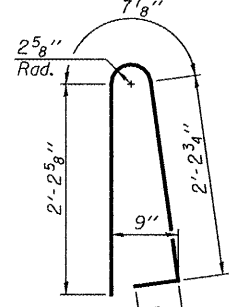
SECTION A-A

DESIGNED FT	April 28 2008
CHECKED DPN	EXAMINED <i>Thomas J. Demas</i>
DRAWN Gregory D. Farmer	PASSED <i>Robert C. Anderson</i>
CHECKED FT/DPN	ENGINEER OF BRIDGES AND STRUCTURES

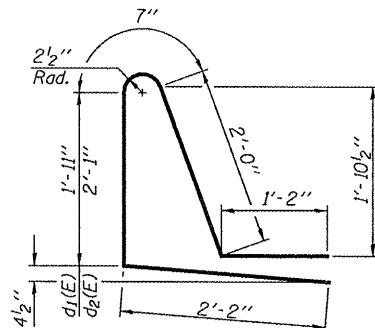


PARAPET JOINT DETAILS

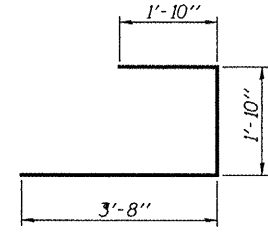
Notes:
The exterior surfaces of the floor drains shall be painted with the finish coat as specified in the special provisions for Cleaning and Painting Existing Steel Structures. The exterior surfaces of the drains shall be cleaned according to Steel Structures Painting Council's Spec. SSPC-SP1 prior to painting.
Fiberglass pipe shall conform to ASTM D 2996, with short-time rupture strength hoop tensile stress of 30,000 p.s.i. minimum.



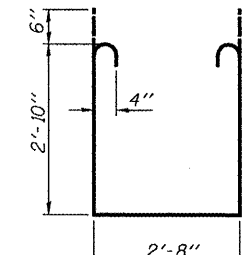
BAR d(E)



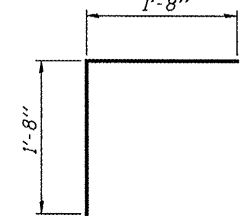
BAR d1(E) and d2(E)



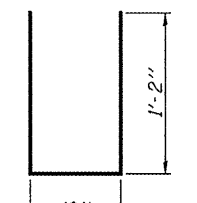
BAR s(E)



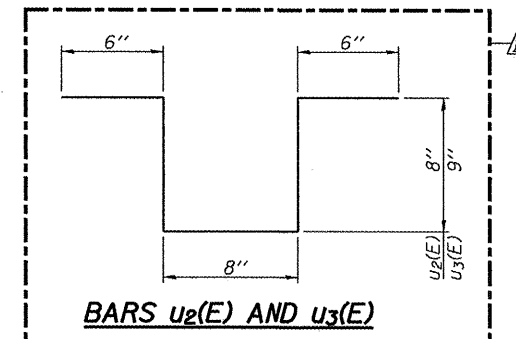
BAR s1(E)



BAR v(E)



u(E) BAR



BARS u2(E) AND u3(E)

SUPERSTRUCTURE DETAILS
F.A.P. ROUTE 313 - SECTION (21-HB-11)
KNOX COUNTY
STA. 495+98.72
STRUCTURE NO. 048-0021
STRUCTURE NO. 048-0022

Revised 5/21/2008 FT