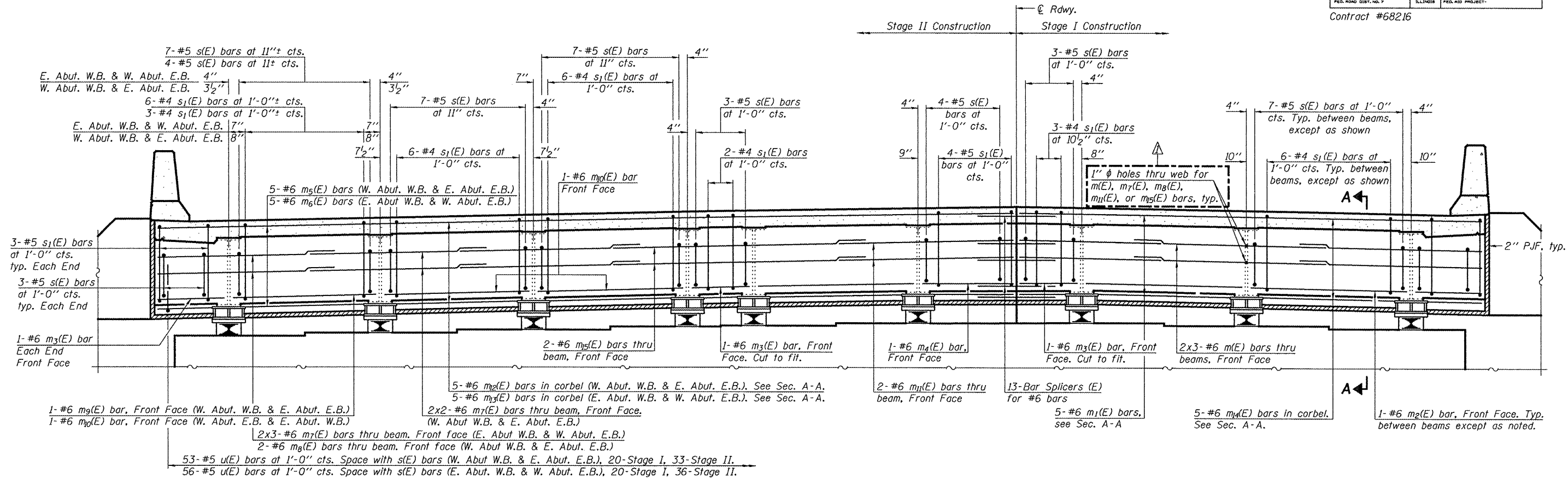


STATE OF ILLINOIS
DEPARTMENT OF TRANSPORTATION

ROUTE NO.	SECTION	COUNTY	DATE	SHEET	SHEET NO. 22
F.A.P. 313	(21-HB-11)	KNOX	55	39	35 SHEETS
FED. ROAD DIST. NO. 7		ILLINOIS	FED. AID PROJECT		

Contract #68216

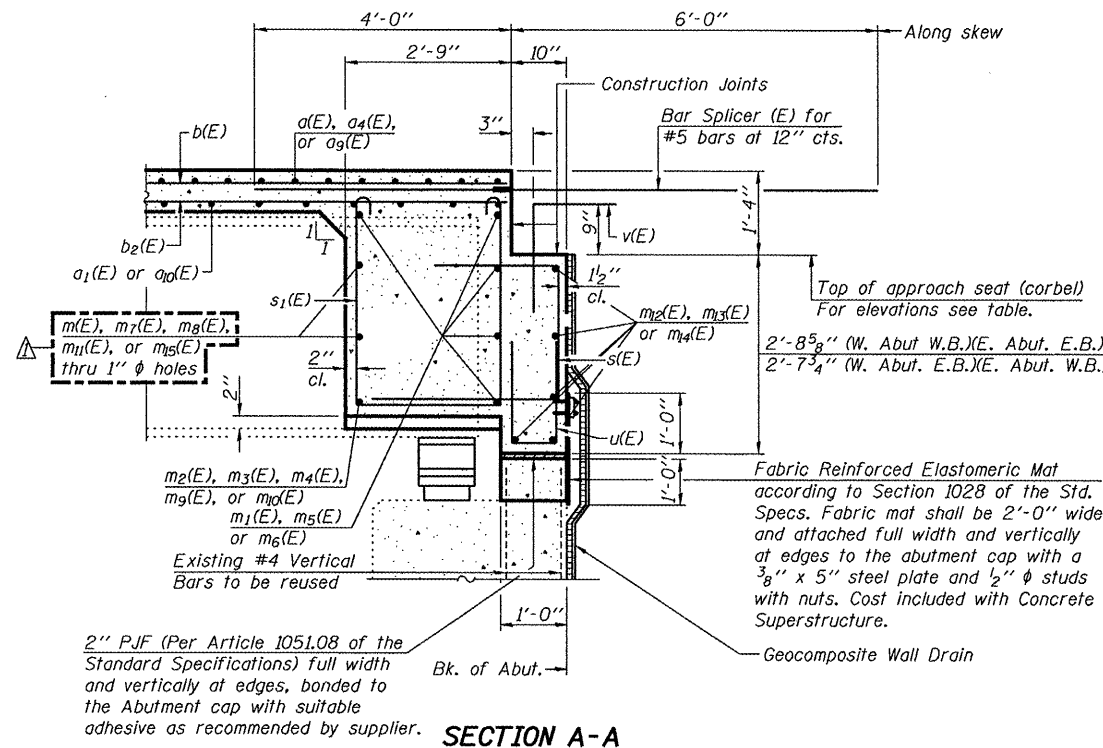


DIAPHRAGM ELEVATION AT ABUTMENTS

(Looking East at East Abutment W.B. shown, other locations similar, except as noted)
(Side retainers adjacent to bearings not shown for clarity)

TOP OF CORBEL ELEVATION AT BACK OF ABUTMENT

Location	W.B. Structure	E.B. Structure
West Abutment		
North Edge of Parapet	804.15	804.26
Center Roadway & P.G.	804.66	804.51
South Edge of Parapet	804.32	803.77
East Abutment		
North Edge of Parapet	803.77	804.32
Center Roadway & P.G.	804.51	804.66
South Edge of Parapet	804.26	804.15



MINIMUM BAR LAP

#6 Bar = 2'-9"

Notes: Reinforcement bars in diaphragm are billed with superstructure on sheet 19 of 35.
Concrete in diaphragm is included with Concrete Superstructure on sheet 19 of 35.
For details of s(E), s1(E), v(E), and u(E) see sheet 19 of 35.
The s(E), s1(E) and u(E) bars shall be placed parallel to the beams. Spacing for these bars shall be at right angles to the beams.
See sheet 34 of 35 for Bar Splicer Details.

DIAPHRAGM DETAILS
F.A.P. ROUTE 313 - SECTION (21-HB-11)
KNOX COUNTY
STA. 495+98.72
STRUCTURE NO. 048-0021
STRUCTURE NO. 048-0022

DESIGNED FT	April 28 2008
CHECKED DPN	EXAMINED <i>Thomas J. Demasalle</i>
DRAWN Gregory D. Farmer	PASSED <i>Ralph E. Anderson</i>
CHECKED FT/DPN	ENGINEER OF BRIDGES AND STRUCTURES

SECTION A-A

(Existing steel diaphragm not shown for clarity.)
(Dimensions at Rt. L's unless otherwise shown.)