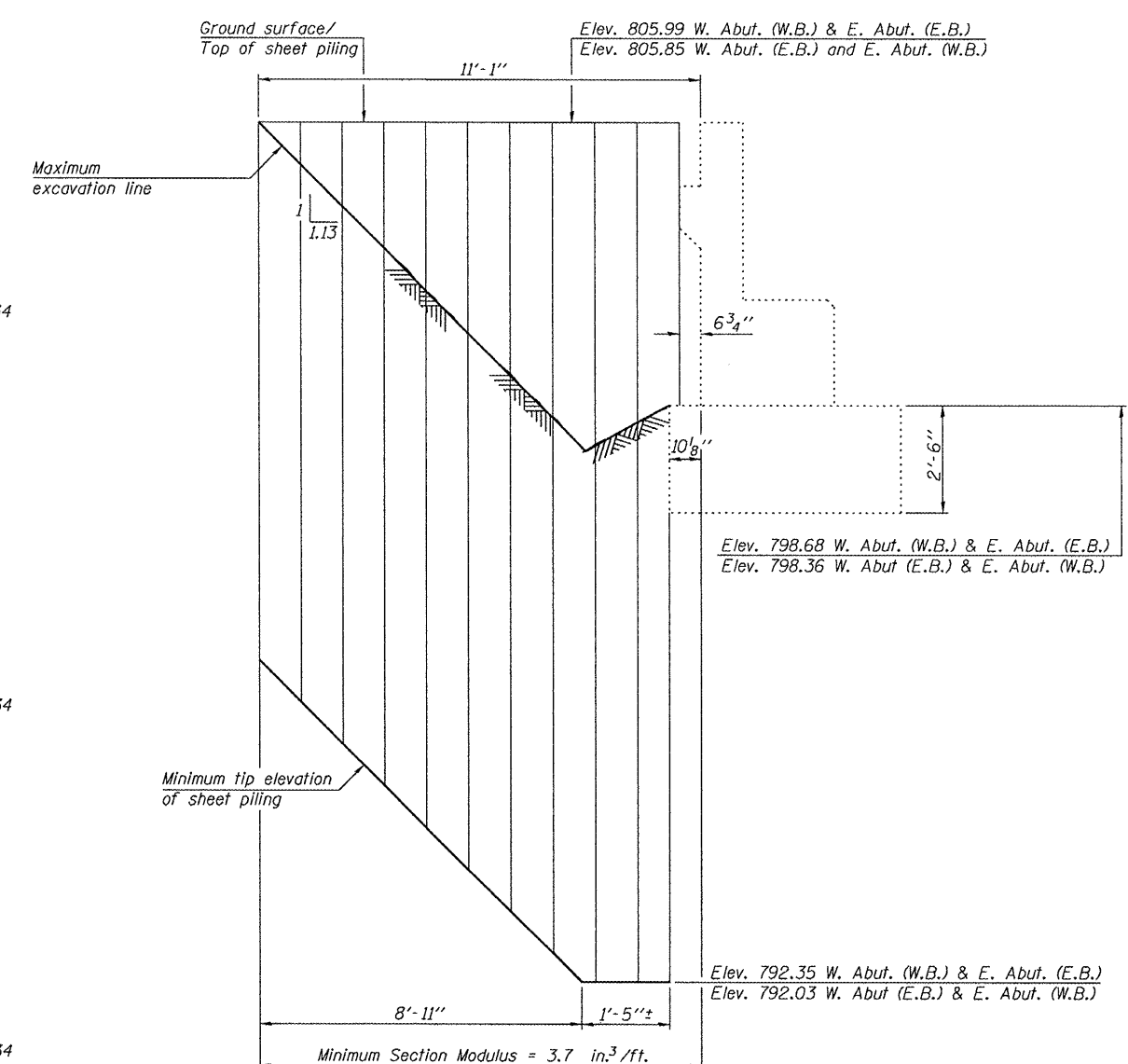
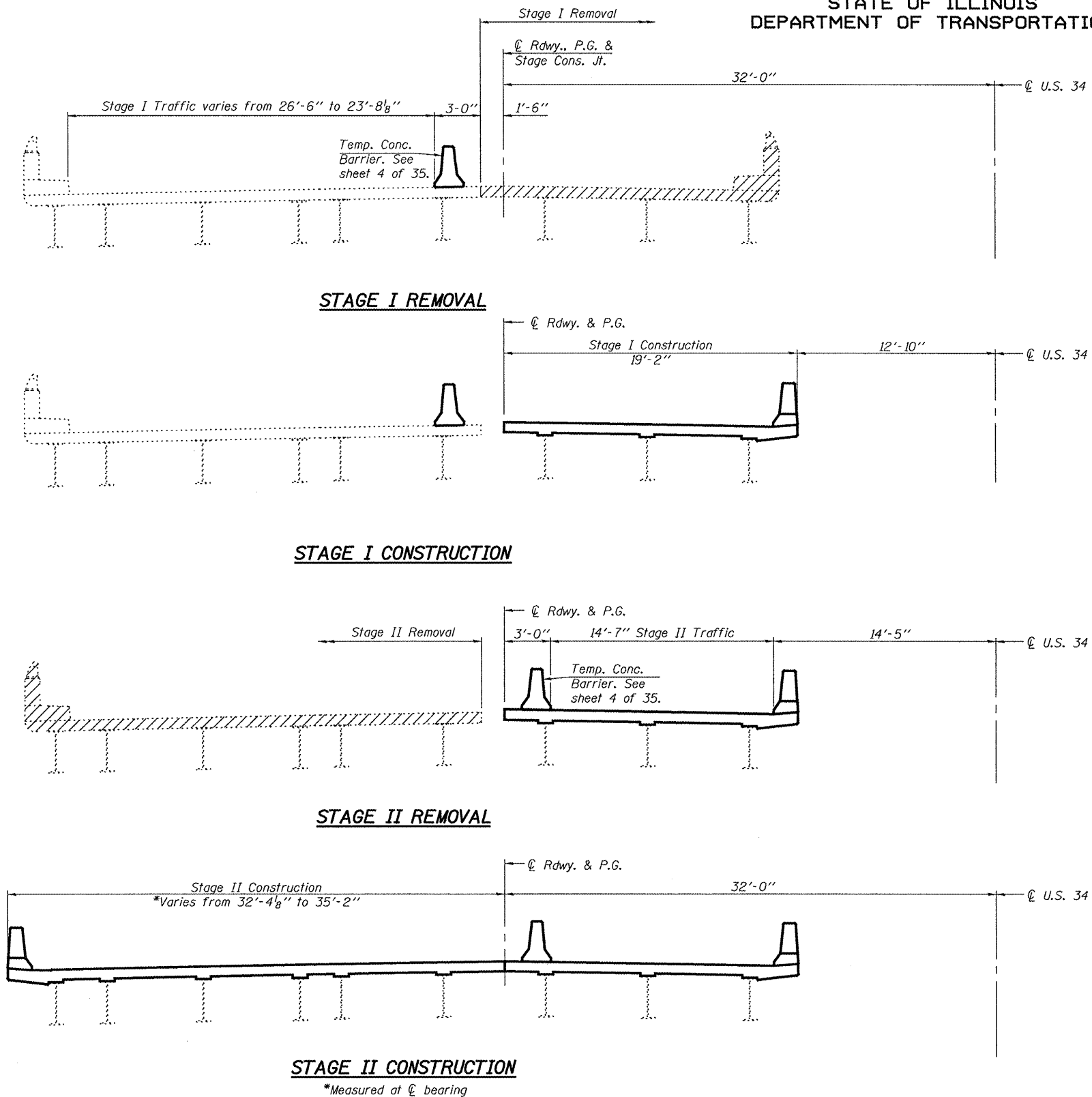


STATE OF ILLINOIS
DEPARTMENT OF TRANSPORTATION

ROUTE NO. F.A.P. 313	SECTION (21-HB-11)	COUNTY KNOX	SHEET NO. 55	SHEET NO. 20	SHEET NO. 3 35 SHEETS
FED. ROAD DIST. NO. 7		ILLINOIS	FED. AID PROJECT		

Contract #68216



TEMPORARY SHEET PILING AND ABUTMENTS

Notes:
If the Contractor chooses to alter the temporary cantilevered sheet piling design requirements shown on the plans, a design submittal including plan details and calculations will be required for review and acceptance by the Engineer.
The Contractor shall connect the first sheet to the existing abutment wall to ensure stability of sheets driven to the top of the existing footing. This connection shall be reviewed and accepted by the Engineer and included in the cost for Temporary Sheet Piling.

STAGE CONSTRUCTION DETAILS
F.A.P. ROUTE 313 - SECTION (21-HB-11)
KNOX COUNTY
STA. 495+98.72
STRUCTURE NO. 048-0021 (WB)
STRUCTURE NO. 048-0022 (EB)

DESIGNED	FT
CHECKED	DPN
DRAWN	Gregory D. Farmer
CHECKED	FT/DPN

April 28, 2008
EXAMINED *Thomas J. Demagalki*
PASSED *Ralph E. Anderson*

Note:
Hatched areas indicate Removal of Existing Concrete Deck.
For quantity of Temporary Concrete Barrier, see Roadway Plans.
All cross sections are looking East for W.B. structure and looking West for E.B. structure.