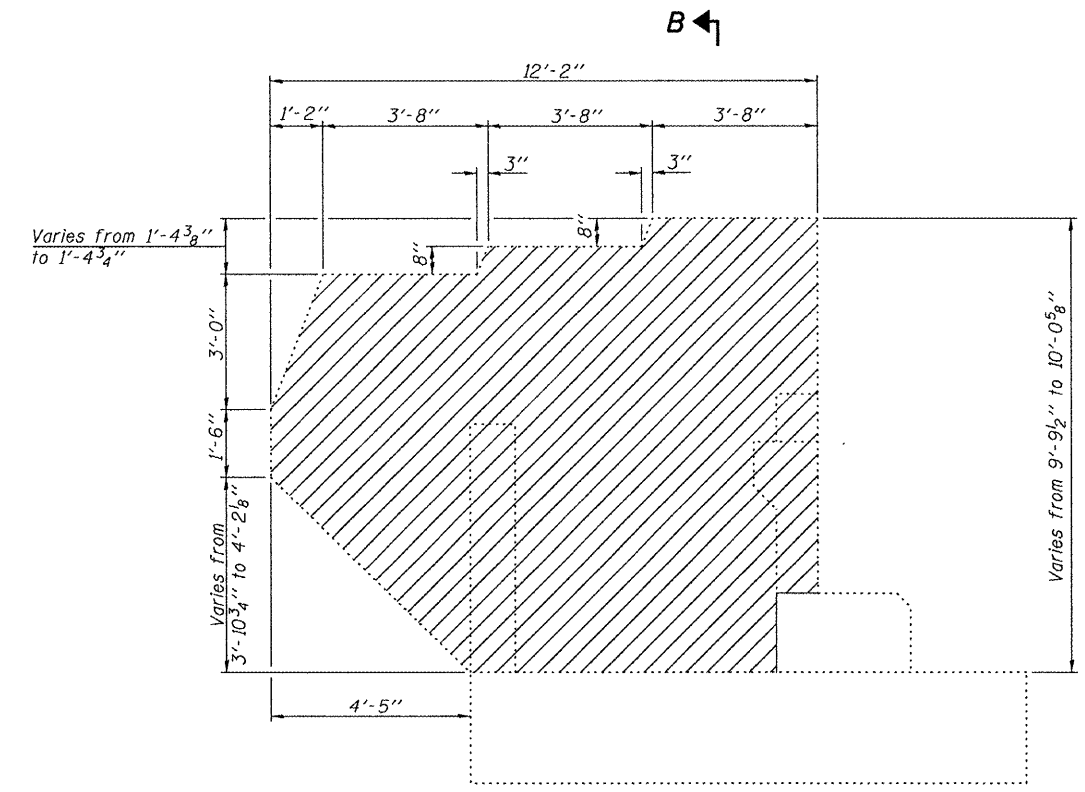


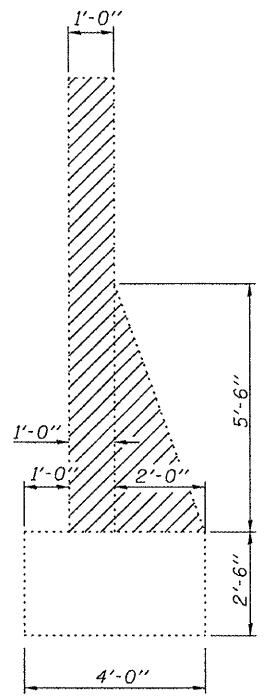
STATE OF ILLINOIS
DEPARTMENT OF TRANSPORTATION

| | | | | | |
|----------------------|------------|------------------|-----------|-------|-----------|
| ROUTE NO. | SECTION | COUNTY | SHEET NO. | SHEET | SHEET NO. |
| F.A.P. 313 | (21-HB-1)I | KNOX | 55 | 46 | 35 SHEETS |
| FED. AID DIST. NO. 7 | ILLINOIS | FED. AID PROJECT | | | |

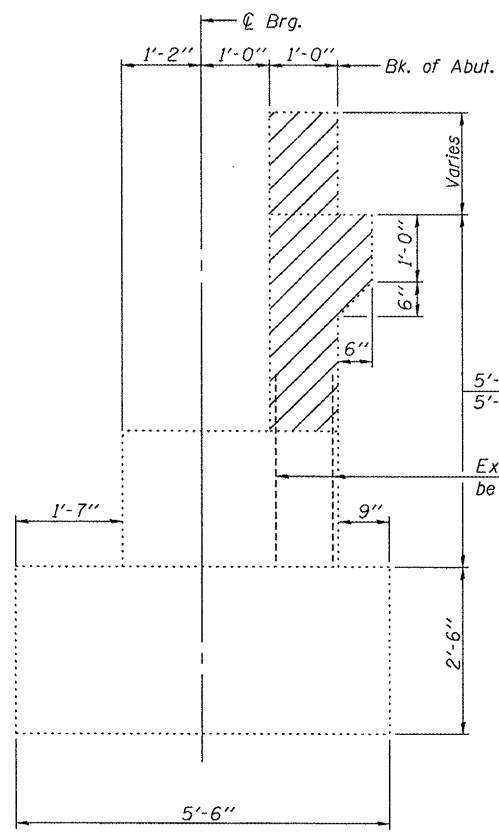
Contract #68216



END POST ELEVATION



SEC. B-B



SEC. A-A

5'-1 3/4" for West Abut. (E.B.) and East Abut. (W.B.)
5'-2 3/8" for West Abut (W.B.) and East Abut. (E.B.)

Existing #4 bars to be reused

Notes: Hatched areas indicate Concrete Removal.
Existing reinforcement extending into new concrete shall be cleaned, straightened and incorporated into the new construction. Cost included with Concrete Removal.
Any reinforcement bars that are damaged during concrete removal operations shall be repaired or replaced using an approved bar splicer or anchorage system. Cost included with Concrete Removal.
Existing reinforcement not extending into new construction shall be cut off and covered with a 2" layer cement grout. Cost shall be included with the cost of Concrete Removal.

| | |
|----------|-------------------|
| DESIGNED | FT |
| CHECKED | DPN |
| DRAWN | Gregory D. Farmer |
| CHECKED | FT |

April 28 2008
EXAMINED *Thomas J. Demagali*
PASSED *Ralph E. Anderson*
ENGINEER OF BRIDGES AND STRUCTURES

CONCRETE REMOVAL
F.A.P. ROUTE 313 - SECTION (21-HB-1)I
KNOX COUNTY
STA. 495+98.72
STRUCTURE NO. 048-0021 (W.B.)
STRUCTURE NO. 048-0022 (E.B.)