

INDEX OF SHEETS

- 1 COVER SHEET
- 2 COMMITMENTS, GENERAL NOTES
- 3 SUMMARY OF QUANTITIES
- 4 TYPICAL SECTIONS
- 5 SCHEDULES OF QUANTITIES
- 6 REFERENCE, TIES AND BENCHMARKS
- 7 CONTACTS FOR CLOSURE, DETOUR PLAN
- 8-9 PLAN & PROFILE SHEETS
- 10-11 EROSION CONTROL PLAN
- 12-13 EXISTING BRIDGE PLANS
- 14-32 STRUCTURE PLANS
- 33-34A DISTRICT CADD STANDARDS
- 35-39 CROSS SECTIONS STANDARDS

LIST OF STANDARDS

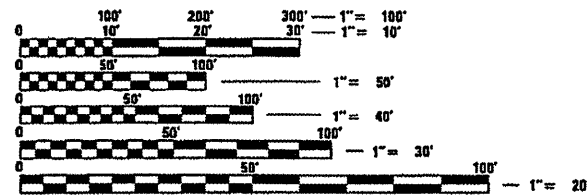
- 000001-05 635011-01
- 001001-01 701006-02
- 280001-04 701101-01
- 420401-06 701901
- 515001-02 720006-01
- 630001-07 780001-01
- 630301-04 781001-02
- 631031-06 BLR 21-7
- 635006-02

CADD STANDARDS

- 630101-D4
- 667101-D4

DESIGN DESIGNATION

- MAJOR COLLECTOR (RURAL)**
- ADT = 1400 (2005)
 - PC = 92.6%
 - SU = 4.4%
 - MU = 3.0%



FULL SIZE PLANS HAVE BEEN PREPARED USING STANDARD ENGINEERING SCALES. REDUCED SIZED PLANS WILL NOT CONFORM TO STANDARD SCALES. IN MAKING MEASUREMENTS ON REDUCED PLANS, THE ABOVE SCALES MAY BE USED.

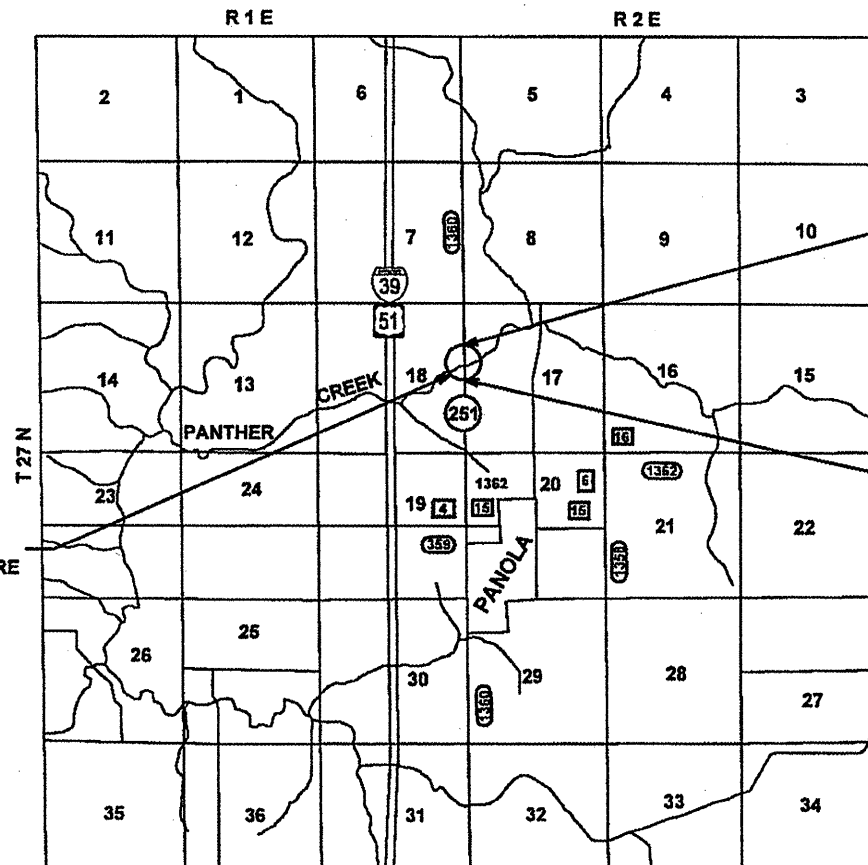
J.U.L.I.E.
JOINT UTILITY LOCATION INFORMATION FOR EXCAVATION
1-800-892-0123
OR 811

PROJECT ENGINEER: RICH DOTSON 309-671-3455
PROJECT MANAGER: CHRISTOPHER MAUSHARD 309-671-3464
CATALOG NO. 033133-00D
CONTRACT NO. 68530

EFK·Moen, LLC
Civil Engineering Design

STATE OF ILLINOIS
DEPARTMENT OF TRANSPORTATION
DIVISION OF HIGHWAYS
PROPOSED
HIGHWAY PLANS

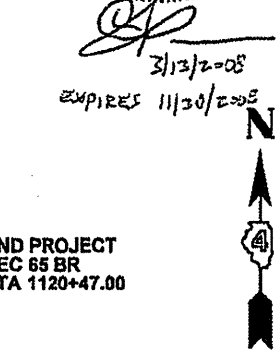
FAS ROUTE 1360 (IL 251)
SECTION 65 BR
PROJECT ACBRS-1360(104)
WOODFORD COUNTY
C-94-141-05



REMOVE AND REPLACE THE EXISTING STRUCTURE OVER PANTHER CREEK EXIST S.N. 102-0006 PROP S.N. 102-0081 AT STA 1116+87.00

NOT TO SCALE

GROSS LENGTH OF PROJECT = 739.00 FT (0.14 MILES)
NET LENGTH OF PROJECT = 739.00 FT (0.14 MILES)



END PROJECT
SEC 65 BR
STA 1120+47.00

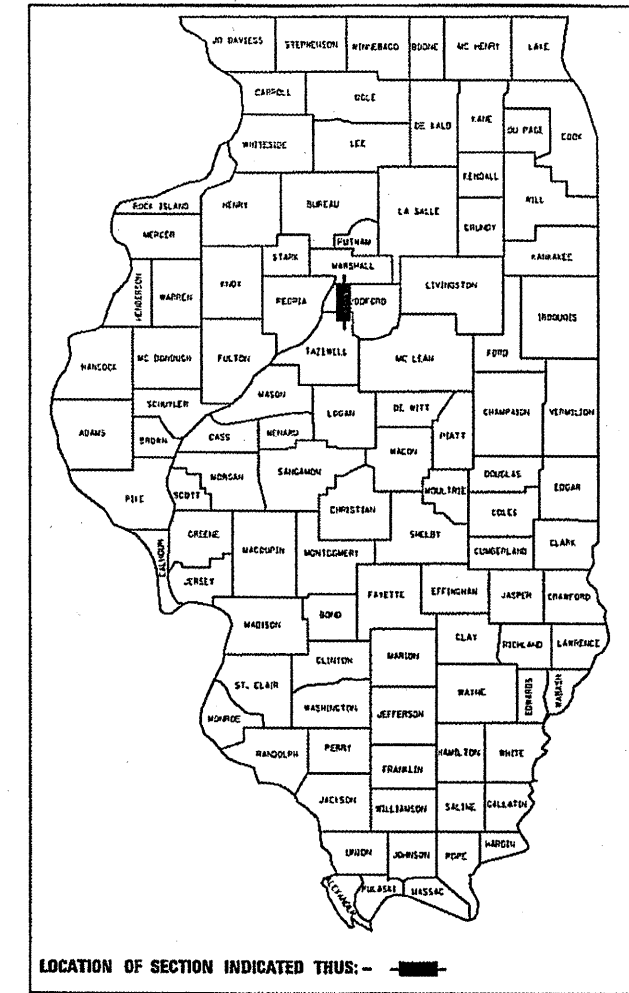
BEGIN PROJECT
SEC 65 BR
STA 1113+08.00



Shelley L. Dintelman 3/13/08
Expires: 11/30/09

F.A.S. RTE.	SECTION	COUNTY	TOTAL SHEETS	SHEET NO.
1360	65 BR	WOODFORD	39	1
FED. ROAD DIST. NO.		ILLINOIS	CONTRACT NO. 68530	

D-94-109-05
+1
40



STATE OF ILLINOIS
DEPARTMENT OF TRANSPORTATION
DIVISION OF HIGHWAYS

SUBMITTED *May 9, 2008*

May 9, 2008
DEPUTY DIRECTOR OF HIGHWAYS, REGION ENGINEER

Eric E. Harm
INTERIM ENGINEER OF DESIGN AND ENVIRONMENT

May 9, 2008
Christine M. Reed
DIRECTOR OF HIGHWAYS, CHIEF ENGINEER

**PRINTED BY THE AUTHORITY
OF THE STATE OF ILLINOIS**