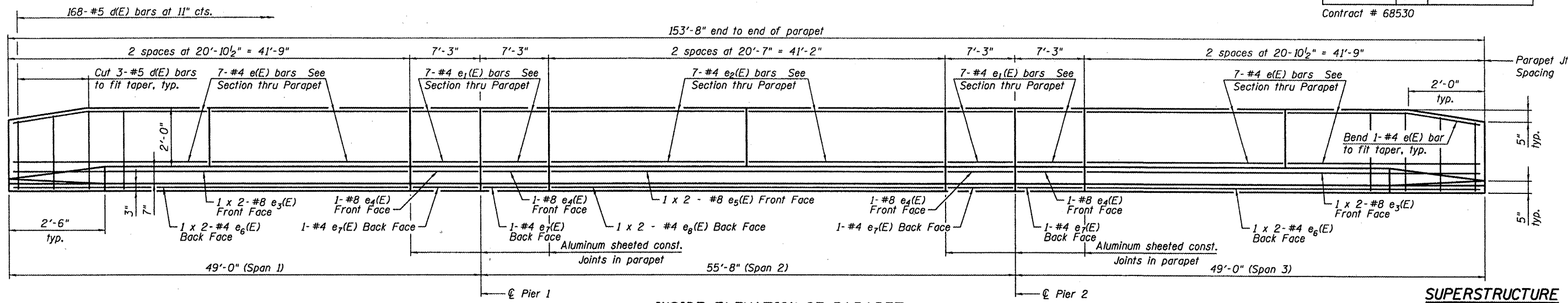


STATE OF ILLINOIS
DEPARTMENT OF TRANSPORTATION

ROUTE NO.	SECTION	COUNTY	SHEETS	SHEET	SHEET NO.
FAS 1360	65-BR	WOODFORD	39	19	6
FED. ROAD DIST. NO. 7	ILLINOIS	FED. AID PROJECT			

Contract # 68530



INSIDE ELEVATION OF PARAPET

SUPERSTRUCTURE
BILL OF MATERIAL

Bar	No.	Size	Length	Shape
a(E)	246	#5	34'-7"	—
a1(E)	185	#5	33'-2"	—
a2(E)	246	#6	6'-0"	—
b(E)	222	#5	27'-5"	—
b1(E)	72	#6	31'-8"	—
b2(E)	252	#5	23'-10"	—
d(E)	336	#5	5'-7"	⌒
d1(E)	336	#5	7'-5"	⌒
e(E)	56	#4	20'-7"	—
e1(E)	56	#4	7'-0"	—
e2(E)	28	#4	20'-4"	—
e3(E)	8	#8	22'-6"	—
e4(E)	8	#8	7'-0"	—
e5(E)	4	#8	22'-2"	—
e6(E)	8	#4	21'-5"	—
e7(E)	8	#4	7'-0"	—
e8(E)	4	#4	21'-2"	—
m(E)	4	#6	33'-4"	—
m1(E)	6	#6	34'-10"	—
m2(E)	24	#6	8'-9"	—
m3(E)	10	#6	5'-8"	—
m4(E)	4	#6	2'-3"	—
s(E)	82	#5	5'-6"	⌒
s1(E)	72	#4	8'-6"	⌒
v(E)	68	#5	3'-4"	⌒
Reinforcement Bars, Epoxy Coated			Pound	42,610
Concrete Superstructure			Cu. Yds.	182.3

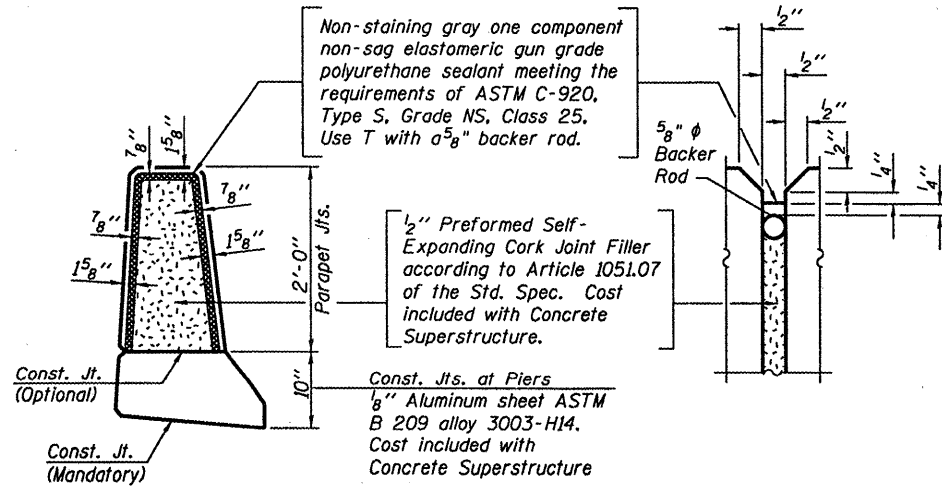
Bars indicated thus 1 x 2 - #5 etc. indicates 1 line of bars with 2 lengths per line.

SUPERSTRUCTURE DETAILS
F.A.S. ROUTE 1360 SEC. 65-BR
IL ROUTE 251 OVER PANTHER CREEK
WOODFORD COUNTY
STATION 1116+87.00
STRUCTURE NO. 102-0081

MINIMUM BAR LAPS

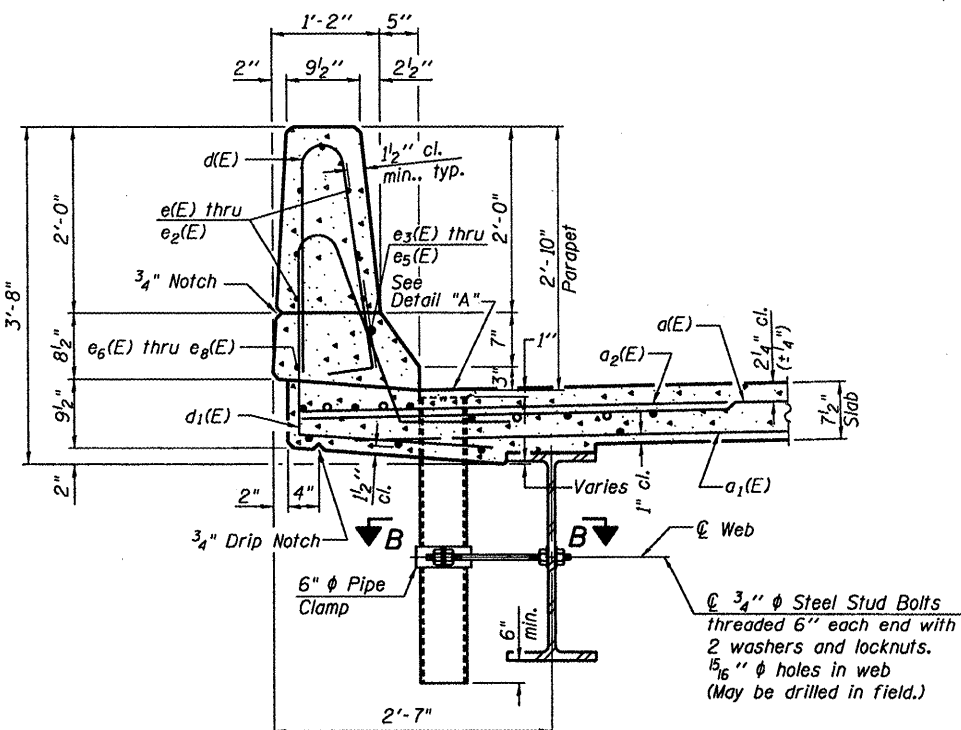
#8 bar = 3'-5"
#4 bar = 1'-4"

Non-staining gray one component non-sag elastomeric gun grade polyurethane sealant meeting the requirements of ASTM C-920, Type S, Grade NS, Class 25. Use T with a5/8" backer rod.



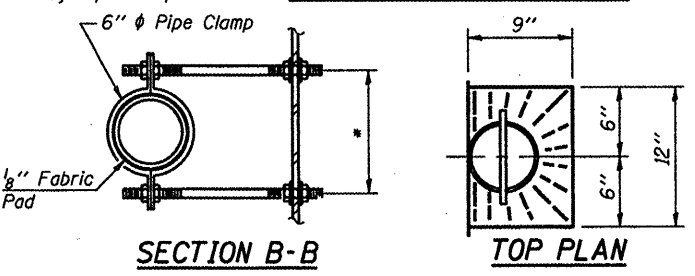
PARAPET JOINT DETAILS

Notes:
Drains shall be located clear of all diaphragms.
Floor Drains need not be painted.
Fiberglass pipe shall conform to ASTM D 2996, with short-time rupture strength hoop tensile stress of 30,000 p.s.i. minimum.



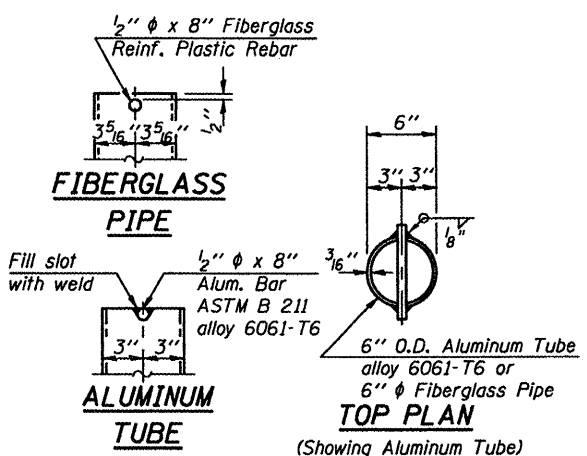
SECTION THRU PARAPET

* Dimension as required by Pipe Clamp



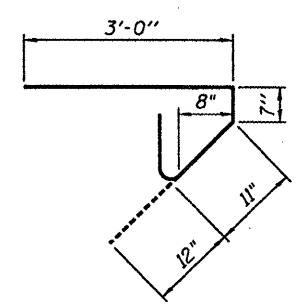
SECTION B-B

TOP PLAN

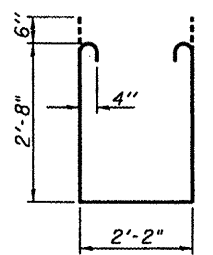


FIBERGLASS PIPE

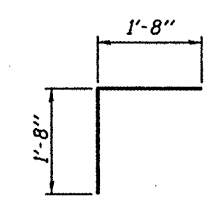
ALUMINUM TUBE



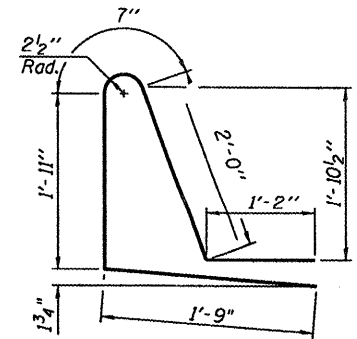
BAR s(E)



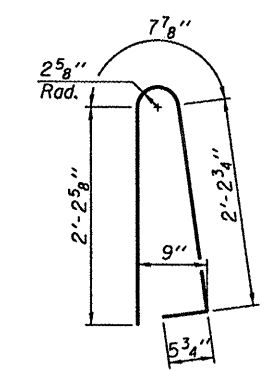
BAR s1(E)



BAR v(E)



BAR d1(E)



BAR d(E)

DESIGNED	CTW
CHECKED	CDL
DRAWN	DP
CHECKED	CTW