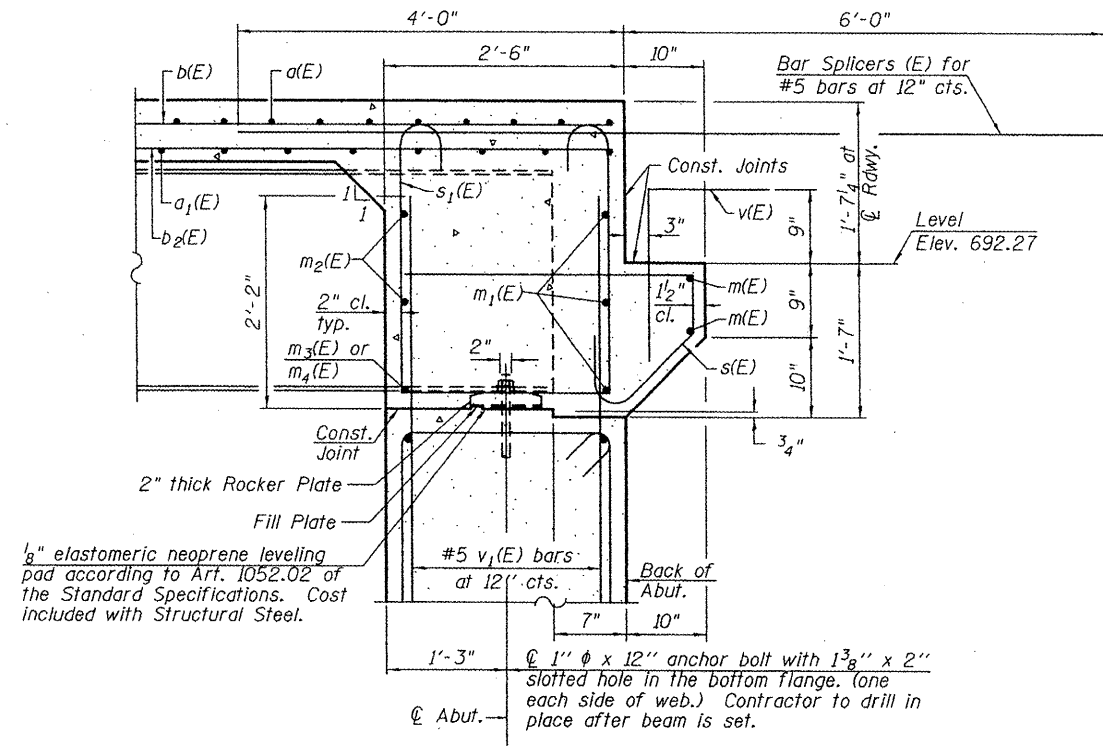


STATE OF ILLINOIS
DEPARTMENT OF TRANSPORTATION

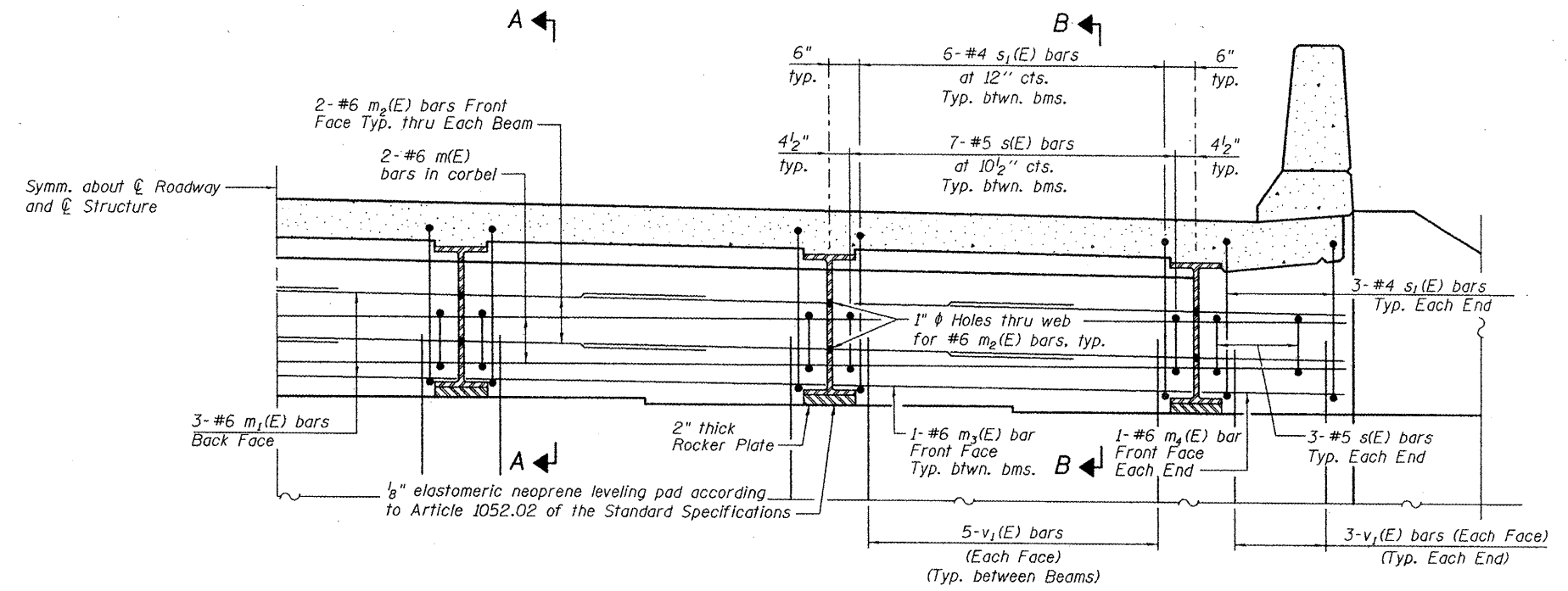
ROUTE NO. FAS 1360	SECTION 65-BR	COUNTY WOODFORD	SHEET 39	SHEET NO. 20	SHEET NO. 7 19 SHEETS
FED. ROAD DIST. NO. 7		ILLINOIS	FED. AID PROJECT		

Contract # 68530

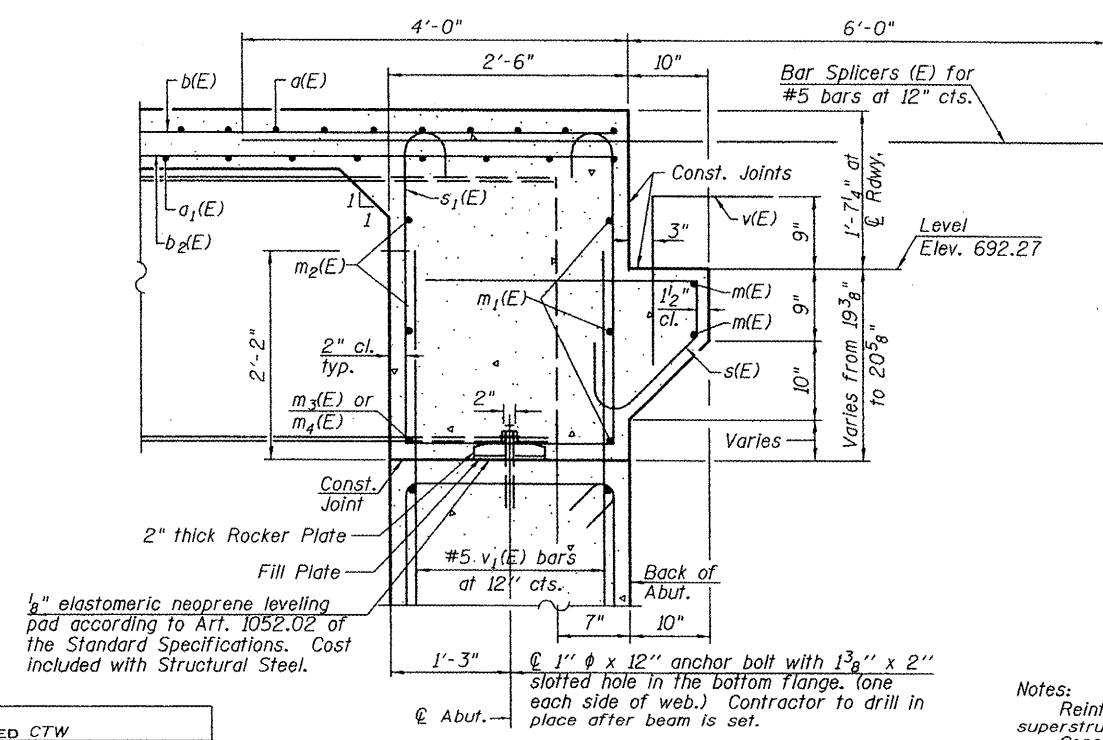


SECTION A-A

(Bearing Seats at Beams 3 and 4)
Dimensions at right angles to abutment, except as shown.



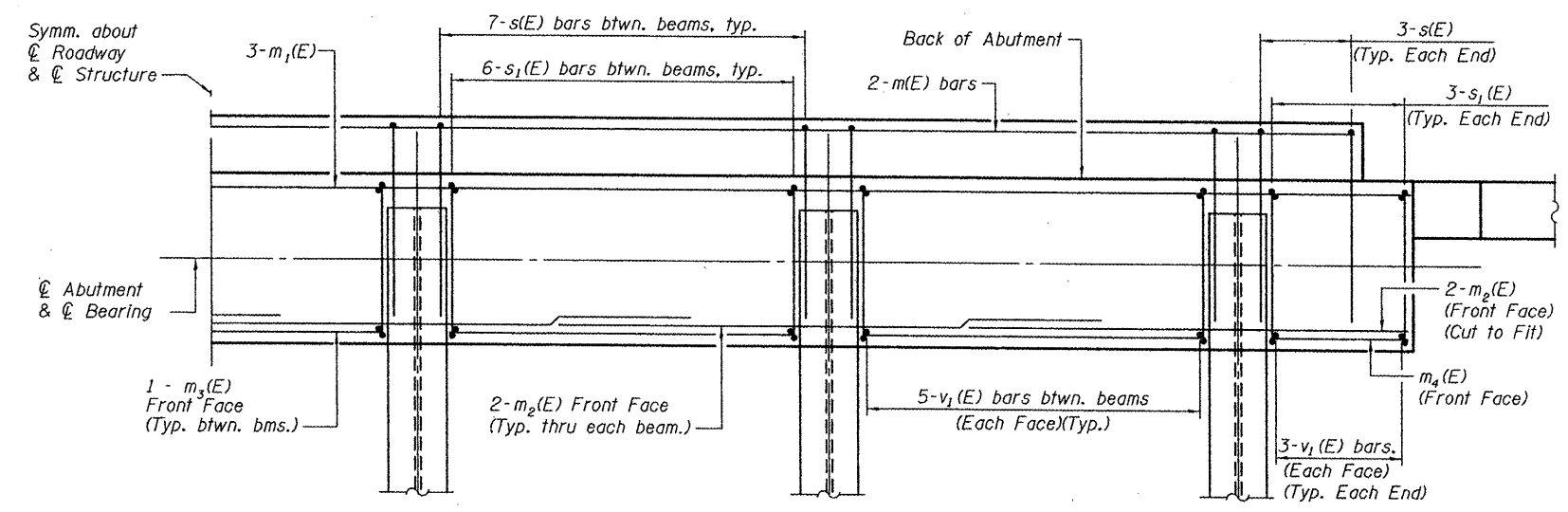
DIAPHRAGM ELEVATION AT ABUTMENTS



SECTION B-B

(Bearing Seats at Beams 1, 2, 5 and 6)
Dimensions at right angles to abutment, except as shown.

DESIGNED	CTW
CHECKED	CDL
DRAWN	DP
CHECKED	CTW



DIAPHRAGM PLAN AT ABUTMENTS

Notes:
Reinforcement bars in diaphragm are billed with superstructure on sheet 6 of 19.
Concrete in diaphragm is included with Concrete Superstructure on sheet 6 of 19.
For details of bars s(E) & s1(E) see sheet 6 of 19.
The s(E) and s1(E) bars shall be placed parallel to the beams. Spacing for these bars shall be at right angles to the beams.
For Anchor bolt details see sheet 10 of 19.
For bar splicer details see sheet 16 of 19.

MIN. BAR LAP
#6 BAR = 2'-9"

DIAPHRAGM DETAILS
F.A.S. ROUTE 1360 SEC. 65-BR
IL ROUTE 251 OVER PANTHER CREEK
WOODFORD COUNTY
STATION 1116+87.00
STRUCTURE NO. 102-0081

EFK•Moen, LLC
Civil Engineering Design