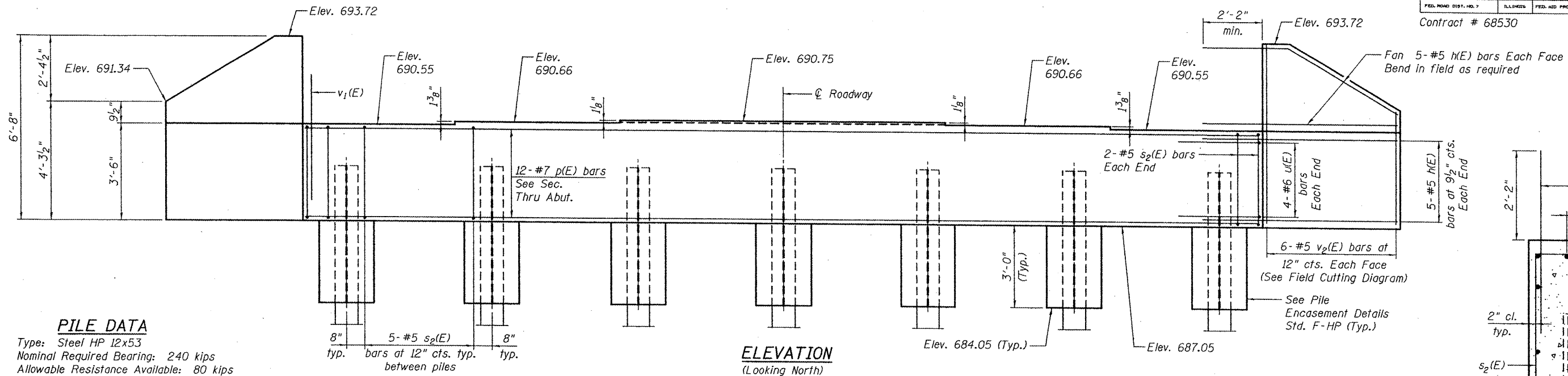


Notes: Pour steps monolithically with cap.
Space reinforcement in cap to miss anchor bolts.
For anchor bolt installation details see sheet 10 of 19.

STATE OF ILLINOIS
DEPARTMENT OF TRANSPORTATION

ROUTE NO.	SECTION	COUNTY	TOTAL SHEETS	SHEET NO.	SHEET NO. 12 19 SHEETS
FAS 1360	65-BR	WOODFORD	39	25	
FED. ROAD DIST. NO. 7		ILLINOIS	FED. AID PROJECT-		

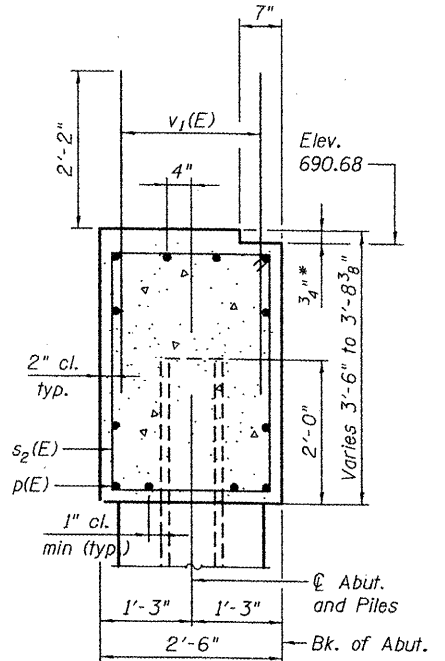
Contract # 68530



PILE DATA

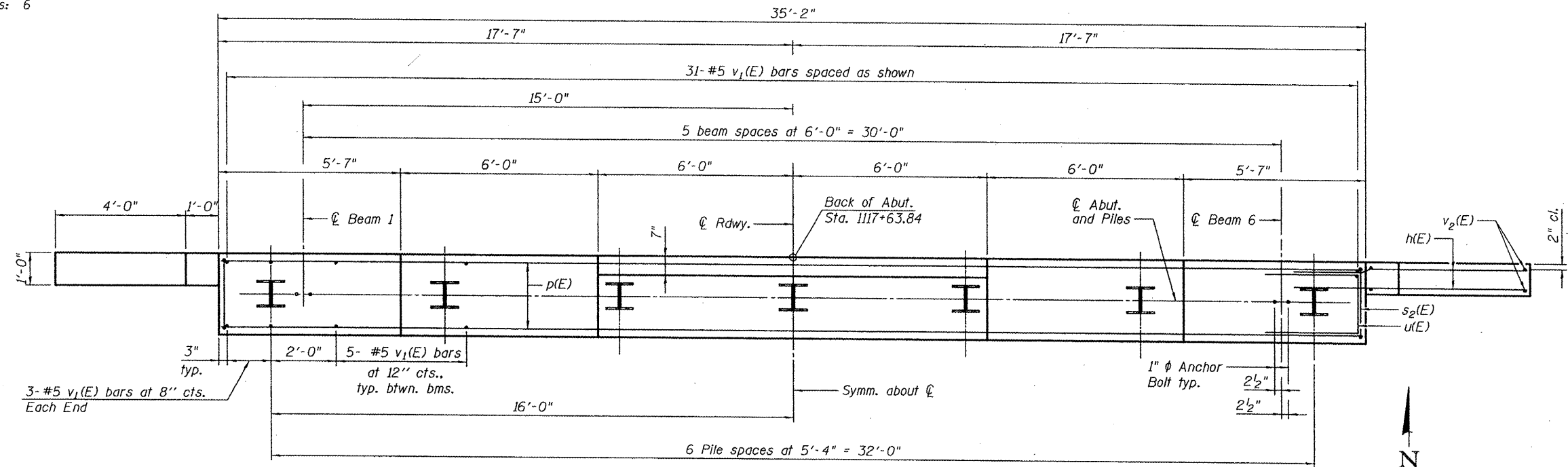
Type: Steel HP 12x53
Nominal Required Bearing: 240 kips
Allowable Resistance Available: 80 kips
Est. Length: 51 ft.
No. Production Piles: 6
No. Test Piles: 1

ELEVATION
(Looking North)



SEC. THRU ABUT.

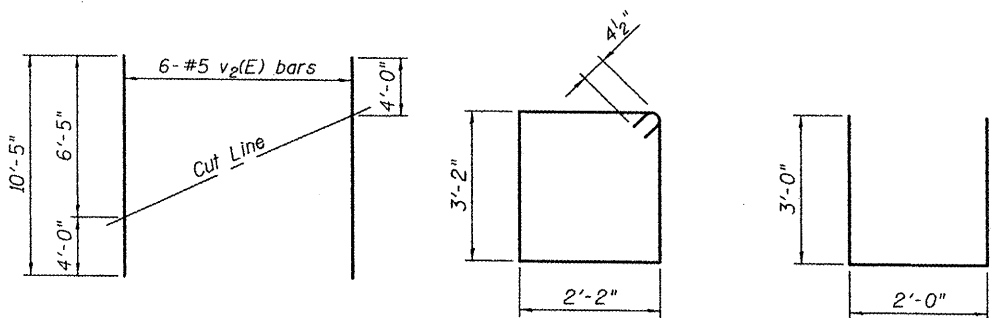
(*Beam Seats 3 and 4 only)



PLAN

BILL OF MATERIAL

Bar	No.	Size	Length	Shape
h(E)	40	#5	7'-0"	
p(E)	12	#7	34'-10"	
s2(E)	34	#5	11'-5"	
u(E)	8	#6	8'-0"	
v1(E)	62	#5	4'-4"	
v2(E)	12	#5	10'-5"	
Concrete Structures		Cu. Yd.	13.8	
Reinforcement Bars, Epoxy Coated		Pound	2,060	
Structure Excavation		Cu. Yd.	84.9	
Furnishing Steel Piles HP 12x53		Foot	306	
Driving Piles		Foot	306	
Test Pile Steel HP 12x53		Each	1	
Concrete Encasement		Cu. Yd.	2.4	



FIELD CUTTING DIAGRAM

Order v2(E) full length. Cut as shown and use remainder of bars in opposite face.

BAR s2(E)

BAR u(E)

DESIGNED CTW	200
CHECKED CDL	EXAMINED
DRAWN DP	PASSED
CHECKED CTW	ENGINEER OF BRIDGES AND STRUCTURES

NORTH ABUTMENT
F.A.S. ROUTE 1360 SEC. 65-BR
IL ROUTE 251 OVER PANTHER CREEK
WOODFORD COUNTY
STATION 1116+87.00
STRUCTURE NO. 102-0081