

Notes: Four steps monolithically with cap.
 Space reinforcement in cap to miss anchor bolts.
 For anchor bolt installation details see sheet 10 of 19.

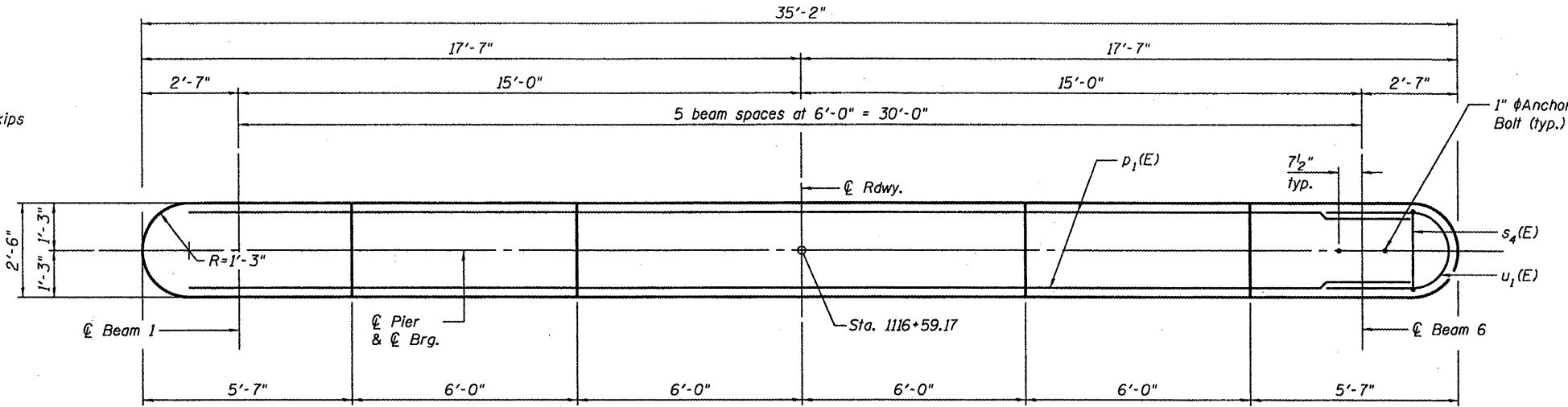
STATE OF ILLINOIS
 DEPARTMENT OF TRANSPORTATION

ROUTE NO.	SECTION	COUNTY	SHEET NO.	SHEET NO.
FAS 1360	65-BR	WOODFORD	39	26
FED. ROAD DIST. NO. 7		ILLINOIS	FED. AID PROJECT	

Contract # 68530

PILE DATA

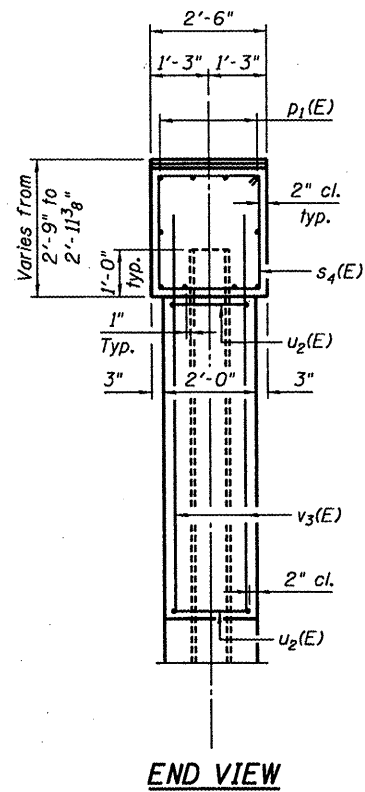
Type: Steel HP 12x53
 Nominal Required Bearing: 300 kips
 Allowable Resistance Available: 100 kips
 Est. Length: 51 ft.
 No. Production Piles: 7



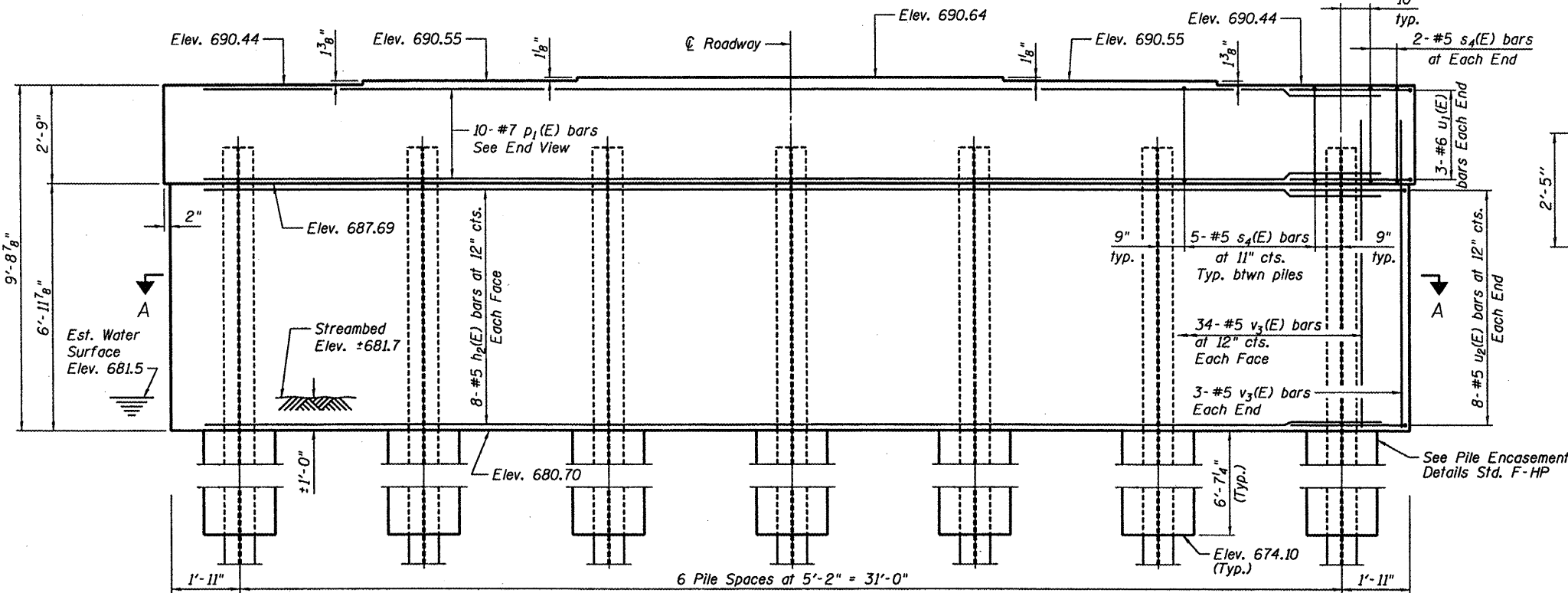
TOP PLAN

BILL OF MATERIAL

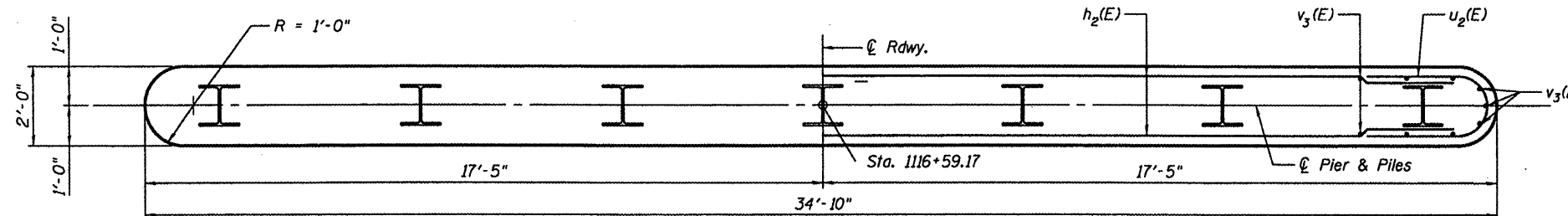
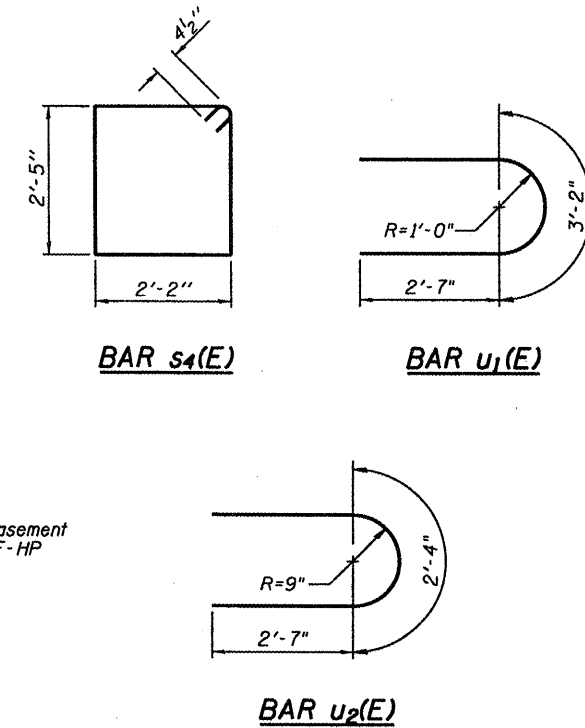
Bar	No.	Size	Length	Shape
h ₂ (E)	16	#5	32'-4"	—
p ₁ (E)	10	#7	32'-2"	—
s ₄ (E)	34	#5	9'-11"	□
u ₁ (E)	6	#6	8'-4"	U
u ₂ (E)	16	#5	7'-6"	U
v ₃ (E)	74	#5	8'-4"	—
Concrete Structures			Cu. Yd.	27.0
Reinforcement Bars, Epoxy Coated			Pound	2,390
Structure Excavation			Cu. Yd.	29.3
Furnishing Steel Piles HP 12x53			Foot	357
Driving Piles			Foot	357
Underwater Structure Excavation protection - Location 1			Each	1
Concrete Encasement			Cu. Yd.	5.3



END VIEW



ELEVATION
 (Looking North)



SECTION A-A

DESIGNED	CTW
CHECKED	CDL
DRAWN	DP
CHECKED	CTW

PIER 1
 F.A.S. ROUTE 1360 SEC. 65-BR
 IL ROUTE 251 OVER PANTHER CREEK
 WOODFORD COUNTY
 STATION 1116+87.00
 STRUCTURE NO. 102-0081

EFK Moen, LLC
 Civil Engineering Design