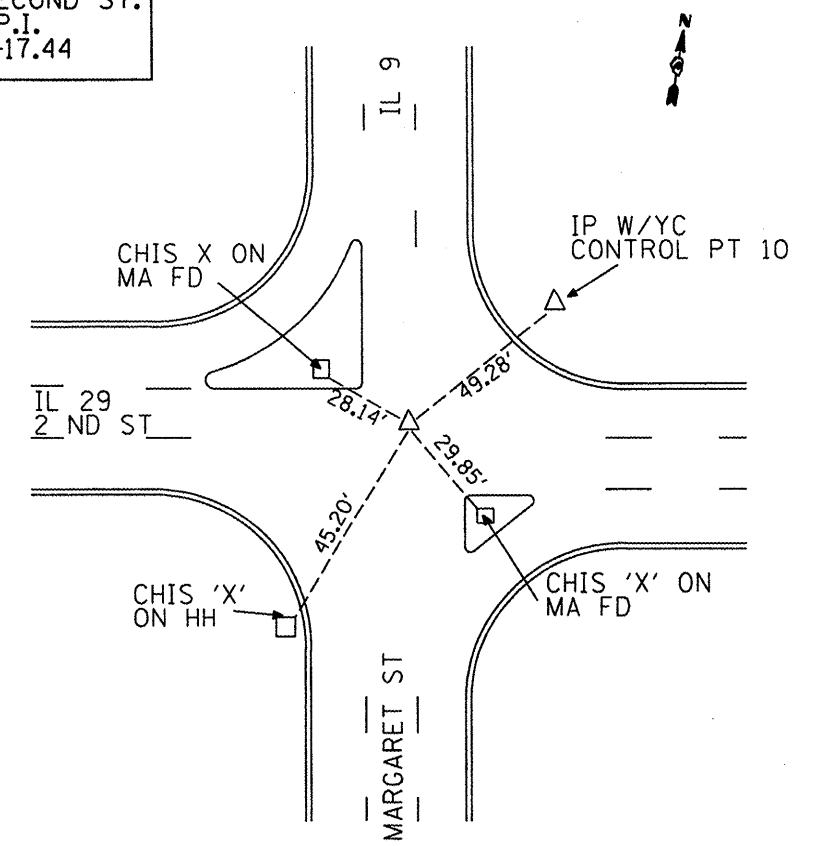


F.A.P. RTE.	SECTION	COUNTY	TOTAL SHEETS	SHEET NO.
693		TAZEWELL	82	23
IL 9				
FED. ROAD DIST. NO.	ILLINOIS	FED. AID PROJECT		
			*13R-1(9)TS(12B)1-1	

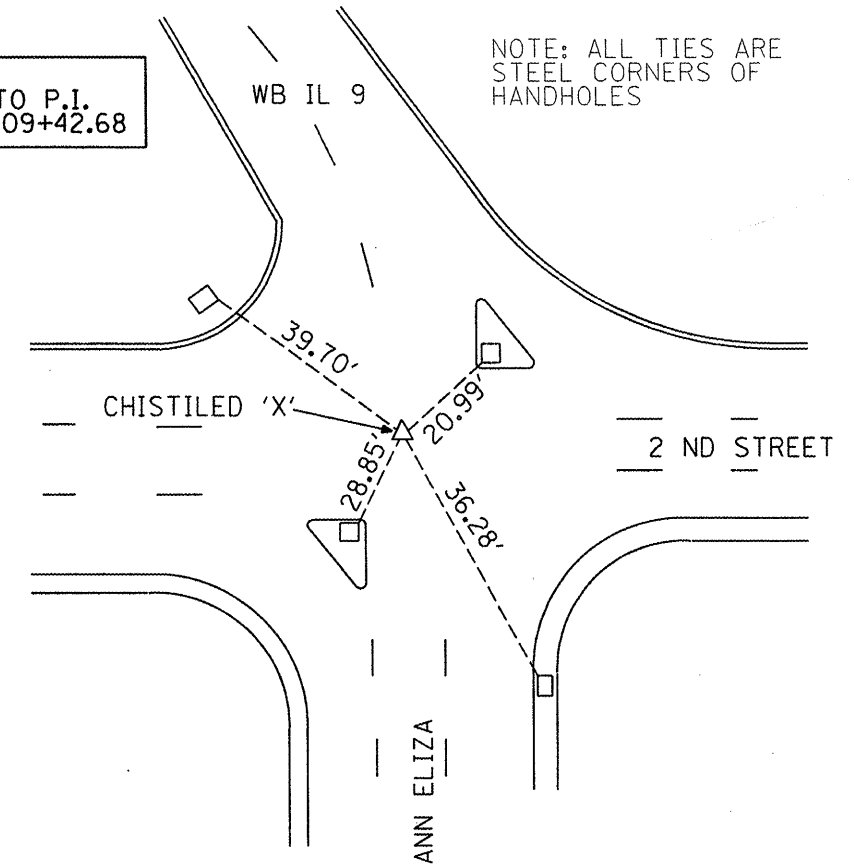
**BENCHMARKS**

	ELEVATION	DESCRIPTION
NGS PBM 49	454.54	TOP OF 1/2" COPPER BOLT SET IN TOP OF LIMESTONE BEARING SEAT @ NW CORNER OF ABANDONED RR BRIDGE ABUTMENT 120 DEGREES N OF CENTERLINE MCNAUGHTON BRIDGE, IL 9 OVER IL RIVER
USEC	458.88	USEC BRASS B.M. DISK SET IN TOP OF SOUTH END OF ABUTMENT FOR STRUCTURE DESCRIBED ABOVE, APPROX. 22' +/- SOUTH & EAST OF B.M. PBM 49 AS DESCRIBED ABOVE
BM #1	474.75	CHIS. "□" ON TOP OF 24" DIAMETER PCC LIGHT POLE BASE IN PARKING LOT @ S.W. QUAD. INTERSECTION IL 9 & IL 29

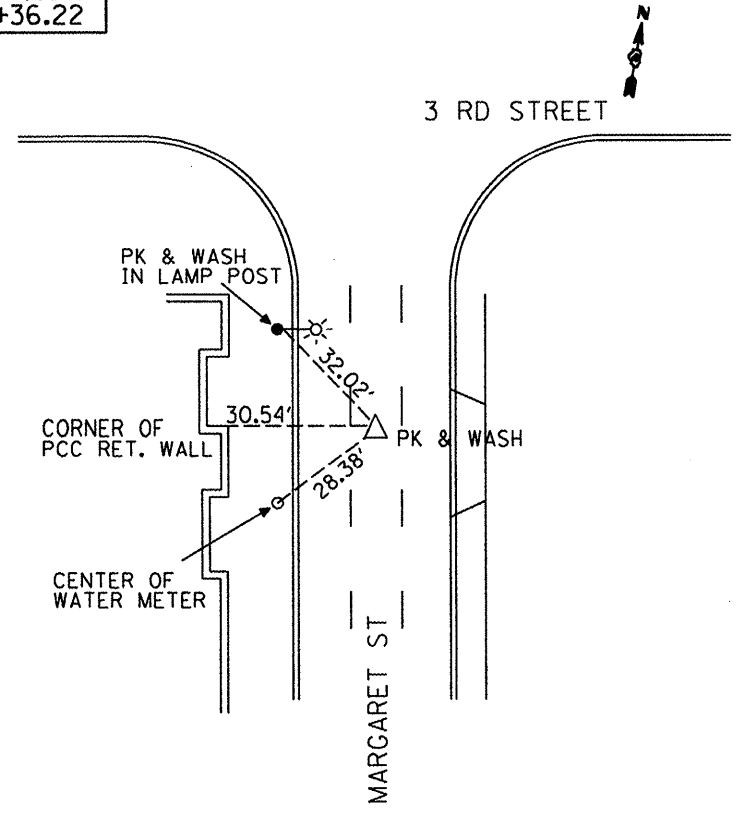
IL 9 & SECOND ST.  
TIES TO P.I.  
STA. 109+17.44



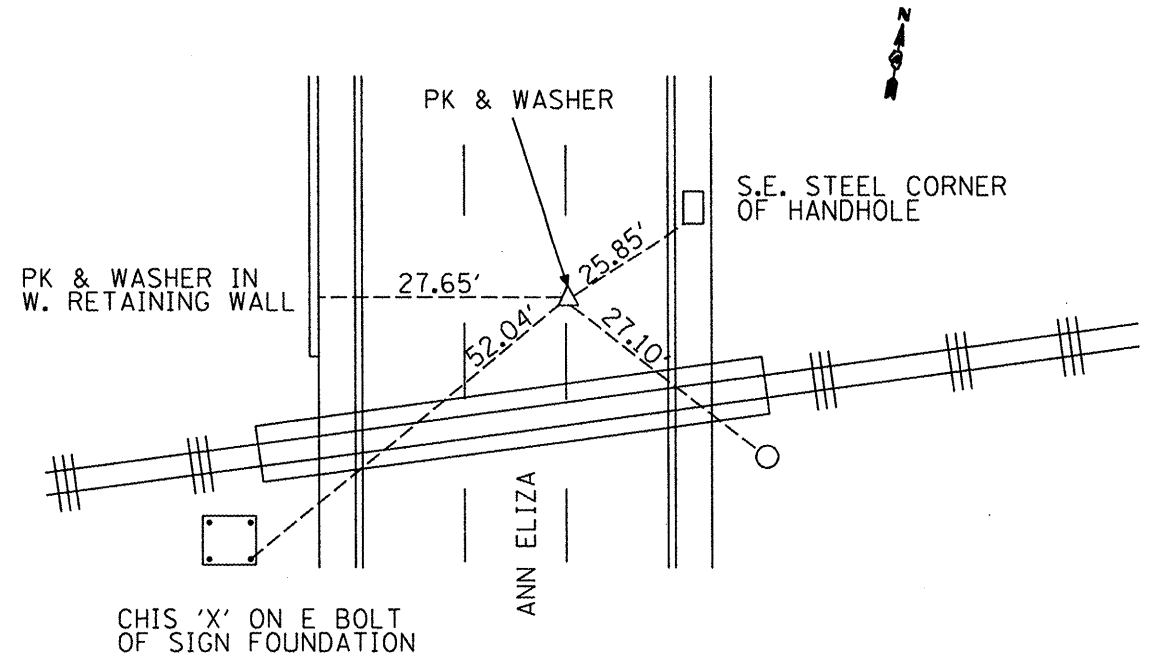
IL 9  
TIES TO P.I.  
STA. 109+42.68



IL 9  
TIES TO P.O.T.  
STA. 115+36.22



IL 9  
TIES TO P.O.T.  
STA. 112+07.01



REVISIONS	
NAME	DATE

ILLINOIS DEPARTMENT OF TRANSPORTATION  
**BENCHMARKS & RECOVERY TIES**  
NOT TO SCALE  
DATE \_\_\_\_\_ DRAWN BY \_\_\_\_\_ CHECKED BY \_\_\_\_\_

PLOT DATE : 3/28/2008  
FILE NAME : S:\GEN\DRAW\T\10\B\PLUS\SD\04\01\NEW\ACTIVE\CONTRACTS\68608\IL 9 Pbk1 - plan01.dgn  
USER NAME : bncobin