

STATE OF ILLINOIS
DEPARTMENT OF TRANSPORTATION
DIVISION OF HIGHWAYS

**PROPOSED
HIGHWAY PLANS**

FAI ROUTE 39
SECTION D4 DIP REPAIR 2008
WOODFORD COUNTY
C-94-054-07

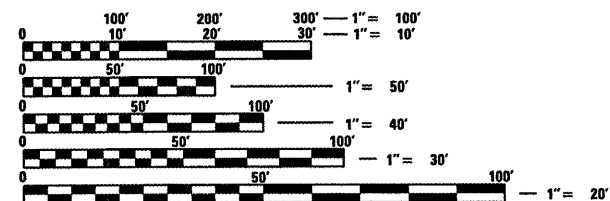
F.A.I. RTE.	SECTION	COUNTY	TOTAL SHEETS	SHEET NO.
39	D4 DIP REPAIR 2008	WOODFORD	9	1
FED. ROAD DIST. NO. -		ILLINOIS	CONTRACT NO. 68705	

- INDEX OF SHEETS
- 1 COVER
 - 2 GENERAL NOTES
 - 3-4 SUMMARY OF QUANTITIES
 - 5 TYPICAL SECTION
 - 6-7 SCHEDULE OF QUANTITIES
 - 8 LANE CLOSURE DETAIL
 - 9 RUMBLE STRIP DETAIL

STANDARDS

420001-07	642001
421001-02	701101-01
421101-07	701106-01
442001-04	701400-02
483001-04	701402-06
601001-02	701901
601101	704001-04
635011-01	

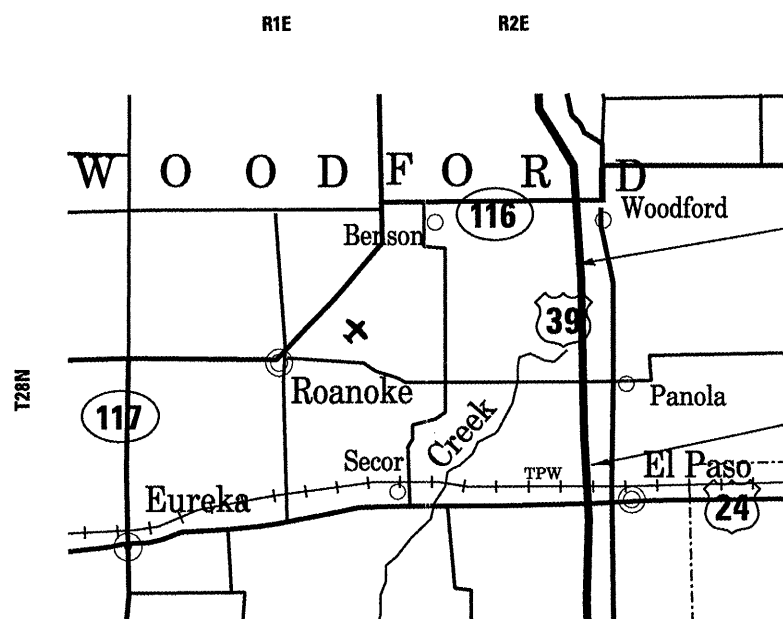
ADT	17900 (2004)
MU	13.2%
SU	4.2%



FULL SIZE PLANS HAVE BEEN PREPARED USING STANDARD ENGINEERING SCALES. REDUCED SIZED PLANS WILL NOT CONFORM TO STANDARD SCALES. IN MAKING MEASUREMENTS ON REDUCED PLANS, THE ABOVE SCALES MAY BE USED.

J.U.L.I.E.
JOINT UTILITY LOCATION INFORMATION FOR EXCAVATION
1-800-892-0123
OR 811

PROJECT ENGINEER: MAUREEN ADDIS (309)671-3454
PROJECT MANAGER: RAY SAMARA (309)671-3477
CATALOG NO. 033497-00D
CONTRACT NO. 68705



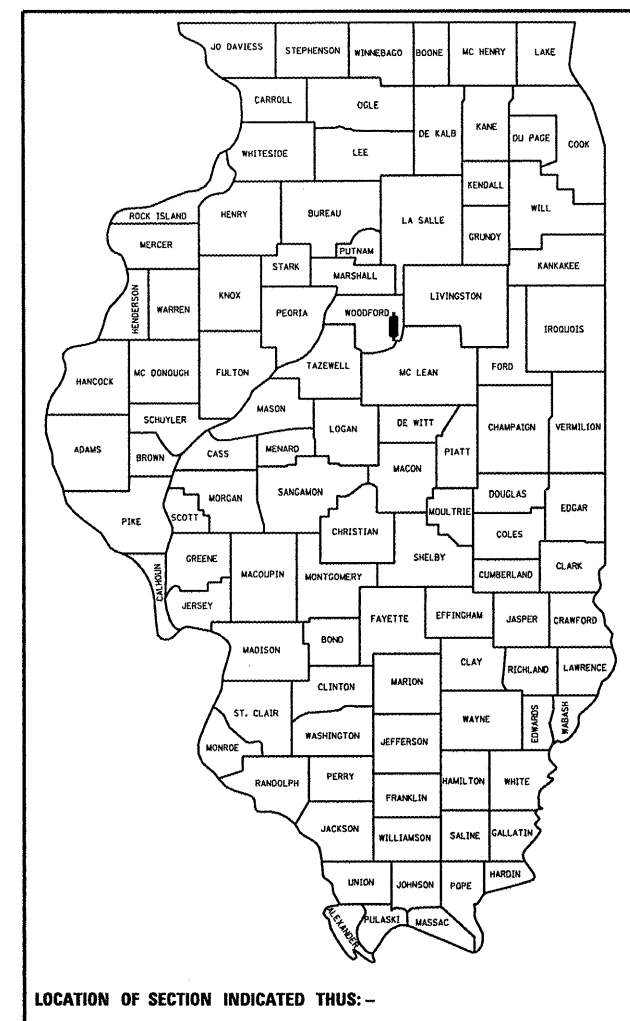
Location 1
(SBL) Sta. 585 + 00
to 588 + 00

Location 2
(SBL) Sta. 454 + 00
to 462 + 00

THIS PROJECT CONSISTS OF PAVEMENT REMOVAL AND REPLACEMENT;
REMOVAL OF UNSUITABLE MATERIAL; AND GRANULAR EMBANKMENT
FOR THE REPAIR OF AREAS WHERE THE EXISTING CRC PAVEMENT HAS SETTLED.

GROSS LENGTH OF PROJECT 13,400 ft 2.53 miles
NET LENGTH OF PROJECT 1100 ft 0.2 mile

D-94-035-07



STATE OF ILLINOIS
DEPARTMENT OF TRANSPORTATION
DIVISION OF HIGHWAYS

SUBMITTED March 28, 2008 *wsc*
J. E. Cruise
DEPUTY DIRECTOR OF HIGHWAYS, REGION ENGINEER

May 9, 2008
Eric E. Starn
Interim ENGINEER OF DESIGN AND ENVIRONMENT

May 9, 2008
Christine M. Reed
DIRECTOR OF HIGHWAYS, CHIEF ENGINEER

**PRINTED BY THE AUTHORITY
OF THE STATE OF ILLINOIS**

AVAILABILITY OF ELECTRONIC FILES

Micro Station and GEOPAK files of this project will be made available to the Contractor. If there is a conflict between the electronic files and the printed contract plans and documents, the printed contract plans and documents shall take precedence over the electronic files. The Contractor shall accept all risk associated with using the electronic files and shall hold the Department harmless for any errors or omissions in the electronic files and the data contained therein. Errors or delays resulting from the use of the electronic files by the Contractor shall not result in an extension of time for any interim or final completion date or shall not be considered cause for additional compensation. The Contractor shall not use, share, or distribute these electronic files except for the purpose of constructing this contract. Any claims by third parties due to use or errors shall be the responsibility of the Contractor. The Contractor shall include this disclaimer with the transfer of these electronic files to any other parties and shall include appropriate language binding them to similar responsibilities.

UTILITIES - LOCATIONS / INFORMATION ON PLANS

The locations of existing water mains, gas mains, sewers, electric power lines, telephone lines and other utilities as shown on the plans are based on careful field investigation and the best information available, but they are not guaranteed. Unless elevations are shown --- all utility locations shown on the cross sections are based on the approximate depth supplied by the utility company. It shall be the Contractor's responsibility to ascertain their exact location from the utility companies and by field inspection.

COMMITMENTS

No commitments have been made for this project.

ENVIRONMENTAL REVIEWS

Prior to the use of any proposed borrow areas, use areas (temporary access roads, detours, run-arounds, etc.) and/or waste areas, the Contractor shall file the required environmental resource request surveys according to Section 107.22 of the Standard Specifications. These surveys are required in order for the Department to conduct cultural and biological resource surveys for the proposed site.

Prior to any waste materials being removed from the construction site the required environmental resource surveys will need to be obtained and filed by the Contractor. Excess waste products removed from the construction site shall be disposed of as required in Section 202.03 of the Standard Specifications.

Any protruding metal bars shall be removed prior to the disposal of broken concrete at approved disposal sites.

The required environmental resource documentation shall include the following:

- BDE Form 2289 (Environmental Survey Request)
- A location map showing the size limits and location of the use area
- Signed property owner agreement form-D4 P10100
- Color photographs depicting the use area
- Borrow Area Entry Agreement form-D4 P10101

Please note that a minimum of two weeks shall be allowed for the District to obtain the required environmental clearances.

PAVEMENT STATIONING NUMBERS & PLACEMENT

The Contractor shall provide labor and materials required to imprint pavement station numbers in the finished surface of the pavement and/or overlay. The numbers shall be approximately 3/4 inch (20mm) wide, 5 inches (125 mm) high and 5/8 inch (15 mm) deep.

The pavement station numbers shall be installed as specified herein:

Interval - 200 feet (English stationing) or 100 meters (metric stationing)

Bottom of Numbers - 6 inches (150 mm) from the inside edge of the pavement marking

Location:

- 2,3, & 5 Lane Pavements - right edge of pavement in direction of increasing stations
- Multi-Lane Divided Roadways - outside edge of pavement in both directions
- Ramps - along baseline edge of pavement

Position - stations shall be placed so they can be read from the adjacent shoulder

Format - English (Metric) pavement stations shall use this format "XXX (XX+X00)" where X represents the pavement station

This work will not be paid for separately, but will be considered included in the cost of the associated pavement and/or overlay pay items.

PROJECT SPECIFIC NOTES

The Aggregate Base Coarse, Type A shall be crushed stone or crushed gravel.

The Porous Granular Embankment shall be CA 7 or CA 11 crushed stone or crushed gravel.

The existing pipe underdrains are not functioning. Do not repair the existing pipe underdrains if they become damaged during excavation for "PIPE UNDERDRAINS 4" (SPECIAL)".

Any spilled concrete or debris on the existing pavement marking shall be cleaned prior to opening the closed lane to traffic. This work shall be included in the agreed unit cost of "CR PCC PAVEMENT 10".

At both ends of each location:

a) The proposed pavement shall be tied into the existing pavement as shown in Standard 442001 (patching detail). This work shall be included in the agreed unit cost of "CR PCC PAVEMENT 10".

b) Pavement Removal shall be in accordance with applicable portions of Article 442.05 of the Standard Specification. This work shall be included in the agreed unit cost of "PAVEMENT REMOVAL."

The shoulder rumble strips shall be included in the agreed unit cost of "PCC SHOULDERS 10".

FILE NAME =	USER NAME = brucebm	DESIGNED -	REVISED -	STATE OF ILLINOIS DEPARTMENT OF TRANSPORTATION	GENERAL NOTES AND COMMITMENTS				F.A.I. RTE.	SECTION	COUNTY	TOTAL SHEETS	SHEET NO.
S:\GEN\DRAW\STD&PLNS\Squad\68705 1-3	wp1ens.dgn	DRAWN -	REVISED -						39	D4 DIP REPAIR 2008	WOODFORD	9	2
PLOT SCALE = 202.1135' / IN.	CHECKED -	REVISED -	REVISED -		CONTRACT NO. 68705								
PLOT DATE = 4/1/2008	DATE -	REVISED -	REVISED -		SCALE:	SHEET NO. OF SHEETS	STA. TO STA.	FED. ROAD DIST. NO.	ILLINOIS FED. AID PROJECT				

SUMMARY OF QUANTITIES

F. A. L. NO.	SECTION	COUNTY	TOTAL SHEETS	SHEET NO.
39	D4 DIP REPAIR	WOODFORD	9	3
STA.		TO STA.		
FED. ROAD DIST. NO. 6		BUMPER	FED. AID PROJECT	

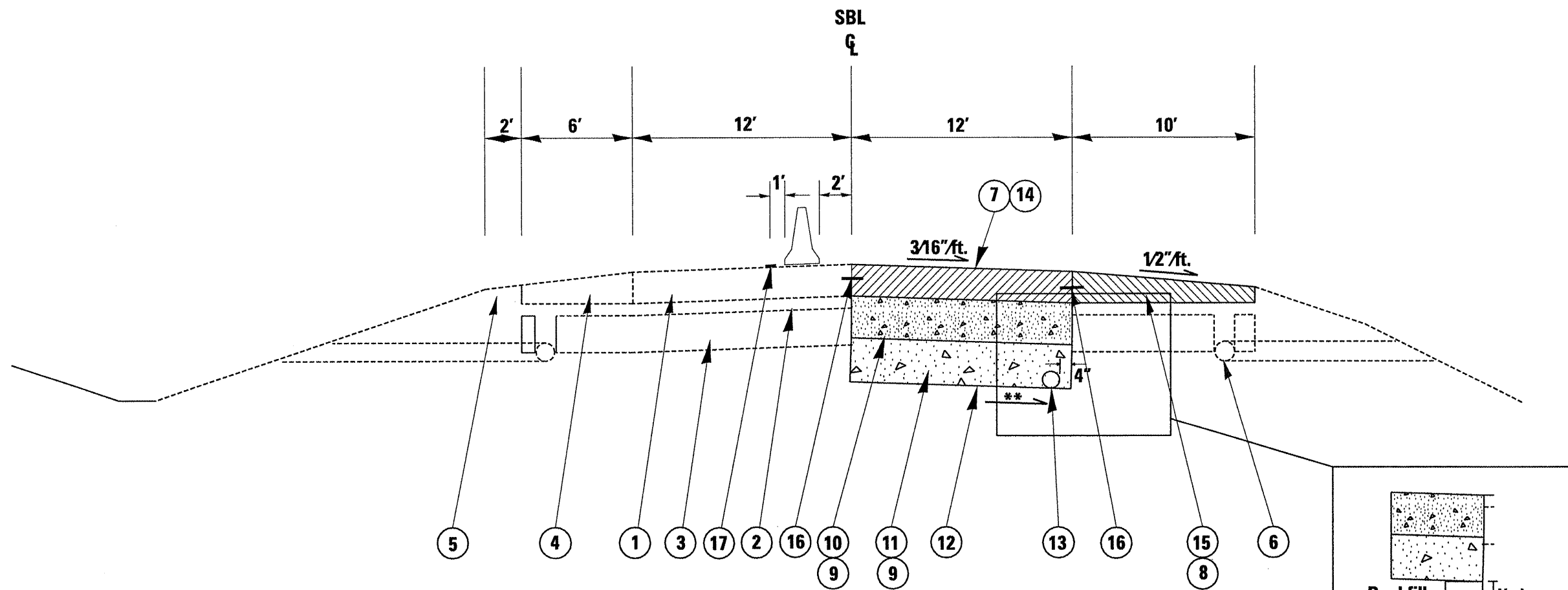
SUMMARY OF QUANTITIES			TOTAL QUANTITIES	CONSTRUCTION TYPE CODE					
CODE NO	ITEM	UNIT		WOODFORD CO. 100% STATE JOOB					
* 20201200	REMOVAL AND DISPOSAL OF UNSUITABLE MATERIAL	CU YD	978	978					
20700220	POROUS GRANULAR EMBANKMENT	CU YD	489	489					
21001000	GEOTECHNICAL FABRIC FOR GROUND STABILIZATION	SQ YD	1467	1467					
28000400	PERIMETER EROSION BARRIER	FOOT	300	300					
35100200	AGGREGATE BASE COURSE, TYPE A	CU YD	489	489					
42100300	CONTINUOUSLY REINFORCED PORTLAND CEMENT CONCRETE PAVEMENT 10"	SQ YD	1467	1467					
42100900	PAVEMENT REINFORCEMENT 10"	SQ YD	1467	1467					
44000100	PAVEMENT REMOVAL	SQ YD	1467	1467					
44004510	PORTLAND CEMENT CONCRETE SHOULDER REMOVAL	SQ YD	333	333					
48300500	PORTLAND CEMENT CONCRETE SHOULDERS 10"	SQ YD	333	333					
60100060	CONCRETE HEADWALL FOR PIPE DRAINS	EACH	3	3					
60100070	SHOULDER REMOVAL AND REPLACEMENT	FOOT	20	20					
60107600	PIPE UNDERDRAINS 4"	FOOT	1100	1100					
60108100	PIPE UNDERDRAINS 4" (SPECIAL)	FOOT	81	81					
63300205	REMOVAL AND REINSTALLATION OF EXISTING STEEL PLATE BEAM GUARD RAIL, TYPE A	FOOT	13	13					
67100100	MOBILIZATION	L SUM	1	1					
70100207	TRAFFIC CONTROL AND PROTECTION, STANDARD 701402	EACH	2	2					

*SPECIALTY ITEM

SUMMARY OF QUANTITIES

P. A. L. NO.	SECTION	COUNTY	TOTAL SHEETS	SHEET NO.
39	D4 DIP REPAIR	WOODFORD	9	4
STA.		TO STA.		
FED. ROAD DIST. NO. 1		BLINDS	FED. AID PROJECT	

SUMMARY OF QUANTITIES			TOTAL QUANTITIES	CONSTRUCTION TYPE CODE				
CODE NO	ITEM	UNIT		WOODFORD CO. 100% STATE J000				
* 70300520	PAVEMENT MARKING TAPE, TYPE III 4"	FOOT	5132	5132				
70301000	WORK ZONE PAVEMENT MARKING REMOVAL	SQ FT	1711	1711				
70400100	TEMPORARY CONCRETE BARRIER	FOOT	1576	1576				
78300100	PAVEMENT MARKING REMOVAL	SQ FT	619	619				
* Z0030250	IMPACT ATTENUATORS, TEMPORARY (NON-REDIRECTIVE), TEST LEVEL 3	EACH	2	2				
Z0075310	TIE BARS 3/4"	EACH	628	628				
	* SPECIALTY ITEM							



SBL STA 454 + 00 to 462 + 00
SBL STA. 585 + 00 to 588 + 00*

- ① EXISTING CONTINUOUSLY REINFORCED CONCRETE PAVEMENT 10"
- ② EXISTING OPEN GRADED DRAINAGE LAYER 4"
- ③ EXISTING LIME MODIFIED SUBGRADE 12"
- ④ EXISTING PCC SHOULDER
- ⑤ EXISTING AGGREGATE SHOULDER
- ⑥ EXISTING SUB-SURFACE DRAIN
- ⑦ PROPOSED PAVEMENT REMOVAL
- ⑧ PROPOSED PCC SHOULDER REMOVAL
- ⑨ PROPOSED REMOVAL OF UNSUITABLE MATERIAL
- ⑩ PROPOSED AGGREGATE BASE COURSE TYPE A 12"
- ⑪ PROPOSED POROUS GRANULAR EMBANKMENT 12"
- ⑫ PROPOSED GEOTECHNICAL FABRIC FOR GROUND STABILIZATION
- ⑬ PROPOSED PIPE UNDERDRAIN 4"
- ⑭ PROPOSED CONTINUOUSLY REINFORCED CONCRETE PAVEMENT 10"
- ⑮ PROPOSED PORTLAND CEMENT CONCRETE SHOULDER 10"
- ⑯ PROPOSED #6 TIE BARS, 2' LONG @ 36" CENTERS
- ⑰ PROPOSED PAVEMENT MARKING TAPE, TYPE III, 4"

To maintain a flow of 0.4% minimum slope for the proposed pipe underdrain the pipe at some locations could be located below the 24" undercut. At these locations the material specified in the special provision "PIPE UNDERDRAIN" shall be used for backfill.

The limits and quantities of removal and replacement shown are based on the boring data. After removal of existing pavement the District Geotechnical Engineer is to be contacted to establish the final removal limits for Unsuitable Material.

* INCLUDES REMOVAL AND REPLACEMENT OF PCC SHOULDER
 ** SLOPE TO DRAIN

FILE NAME =	USER NAME = brucebn	DESIGNED -	REVISED -	STATE OF ILLINOIS DEPARTMENT OF TRANSPORTATION	TYPICAL SECTION SOUTH BOUND LANE		F.A.I. RTE.	SECTION	COUNTY	TOTAL SHEETS	SHEET NO.	
S:\GEN\DRAWING\STD&PLNS\Squad1\68705 1-3\plans.dgn		DRAWN -	REVISED -		SCALE: _____	SHEET NO. _____ OF _____ SHEETS	STA. _____ TO STA. _____	39	D4 DIP REPAIR 2008	WOODFORD	9	5
		CHECKED -	REVISED -								CONTRACT NO. 68705	
		DATE -	REVISED -								FED. ROAD DIST. NO. - ILLINOIS FED. AID PROJECT	

REMOVAL & DISPOSAL OF UNSUITABLE MATERIALS	
Location	Cu Yd
SBL	
Lt. Sta. 454 + 00 - 462 + 00	711.1
Lt. Sta. 585 + 00 - 588 + 00	266.7
Total	978

POROUS GRANULAR EMBANKMENT	
Location	Cu Yd
SBL	
Lt. Sta. 454 + 00 - 462 + 00	355.6
Lt. Sta. 585 + 00 - 588 + 00	133.3
Total	489

GEOTECHNICAL FABRIC FOR GROUND STABILIZATION	
Location	Sq Yd
SBL	
Lt. Sta. 454 + 00 - 462 + 00	1066.7
Lt. Sta. 585 + 00 - 588 + 00	400
Total	1467

AGGREGATE BASE COURSE, TYPE A	
Location	Cu Yd
SBL	
Lt. Sta. 454 + 00 - 462 + 00	355.6
Lt. Sta. 585 + 00 - 588 + 00	133.3
Total	489

CR PCC PAVEMENT 10"	
Location	Sq Yd
SBL	
Lt. Sta. 454 + 00 - 462 + 00	1066.7
Lt. Sta. 585 + 00 - 588 + 00	400
Total	1467

PAVEMENT REINFORCEMENT 10"	
Location	Sq Yd
SBL	
Lt. Sta. 454 + 00 - 462 + 00	1066.7
Lt. Sta. 585 + 00 - 588 + 00	400
Total	1467

PAVEMENT REMOVAL	
Location	Sq Yd
SBL	
Lt. Sta. 454 + 00 - 462 + 00	1066.7
Lt. Sta. 585 + 00 - 588 + 00	400
Total	1467

PCC SHOULDERS 10"	
Location	Sq Yd
SBL	
Lt. Sta. 585 + 00 - 588 + 00	333
Total	333

PCC SHOULDER REMOVAL	
Location	Sq Yd
SBL	
Lt. Sta. 585 + 00 - 588 + 00	333
Total	333

SHOULDER REMOVAL & REPACEMENT	
Location	Foot
SBL	
Lt. Sta. 458 + 00	10
Lt. Sta. 462 + 00	10
Total	20

(for PIPE UNDERDRAIN 4", SPECIAL)

PIPE UNDERDRAINS 4"	
Location	Foot
SBL	
Lt. Sta. 454 + 00 - 462 + 00	800
Lt. Sta. 585 + 00 - 588 + 00	300
Total	1100

PIPE UNDERDRAINS 4" (SPECIAL)	
Location	Foot
SBL	
Lt. Sta. 458 + 00	27
Lt. Sta. 462 + 00	27
Lt. Sta. 585 + 00	27
Total	81

CONCRETE HEADWALL FOR PIPE DRAINS	
Location	Each
SBL	
Lt. Sta. 458 + 00	1
Lt. Sta. 462 + 00	1
Lt. Sta. 585 + 00	1
Total	3

FILE NAME =	USER NAME = brucebm	DESIGNED -	REVISED -
S:\GEN\DRIFT\STO&PLNS\Squad\68705 1-3	plens.dgn	DRAWN -	REVISED -
PLOT SCALE = 200.0000 ' / IN.	CHECKED -	REVISED -	REVISED -
PLOT DATE = 3/21/2008	DATE -	REVISED -	REVISED -

**STATE OF ILLINOIS
DEPARTMENT OF TRANSPORTATION**

SCHEDULE OF QUANTITIES	
SCALE:	SHEET NO. OF SHEETS STA. TO STA.

F.A.I. RTE.	SECTION	COUNTY	TOTAL SHEETS	SHEET NO.
39	D4 DIP REPAIR 2008	WOODFORD	8	6
FED. ROAD DIST. NO. ILLINOIS FED. AID PROJECT			CONTRACT NO. 68705	

REMOVE & REINSTALL OF EXISTING SPBGR, TYPE A	
Location	Foot
SBL	
Lt. Sta. 457 + 94 - 458 + 07	13
Total	13

(for Construction of PIPE UNDERDRAINS 4", SPECIAL)

PERIMETER EROSION BARRIER	
Location	Foot
SBL	
Lt. Sta. 585 + 00 - 588 + 00	300
Total	300

PAVEMENT MARKING TAPE, TYPE III, 4"	
Location	Foot
SBL	
Sta. 452 + 60 - 466 + 38	2716
Sta. 583 + 60 - 605 + 38	2416
Total	5132

WORK ZONE PAVEMENT MARKING REMOVAL	
Location	Sq Ft
SBL	
Sta. 452 + 60 - 466 + 38	805.3
Sta. 583 + 60 - 605 + 38	905.3
Total	1711

TEMPORARY CONCRETE BARRIER	
Location	Foot
SBL	
Sta. 454 + 00 - 464 + 38	1038
Sta. 585 + 00 - 590 + 38	538
Total	1576

PAVEMENT MARKING REMOVAL	
Location	Sq Ft
SBL	
Sta. 452 + 60 - 464 + 38	392.7
Sta. 583 + 60 - 590 + 38	226
Total	619

IMPACT ATTENUATOR, TEMPORARY (NON-REDIRECTIVE), TEST LEVEL 3	
Location	Each
SBL	
Sta. 464 + 38	1
Sta. 590 + 38	1
Total	2

(Design Speed 55mph)

TIE BARS 3/4"	
Location	Each
SBL	
Sta. 454 + 00 - 462 + 00	530
Sta. 585 + 00 - 588 + 00	98
Total	628

TRAFFIC CONTROL & PROTECTION STANDARD 701402	
Location	Each
JOBSITE	2
Total	2

FILE NAME =
S:\GEN\DRAWING\STD&PLNS\Squad\168705 1-3

USER NAME = brucebn
nplans.dgn
PLOT SCALE = 200.0000 ' / IN.
PLOT DATE = 3/25/2008

DESIGNED - ---
DRAWN - ---
CHECKED - ---
DATE - -----

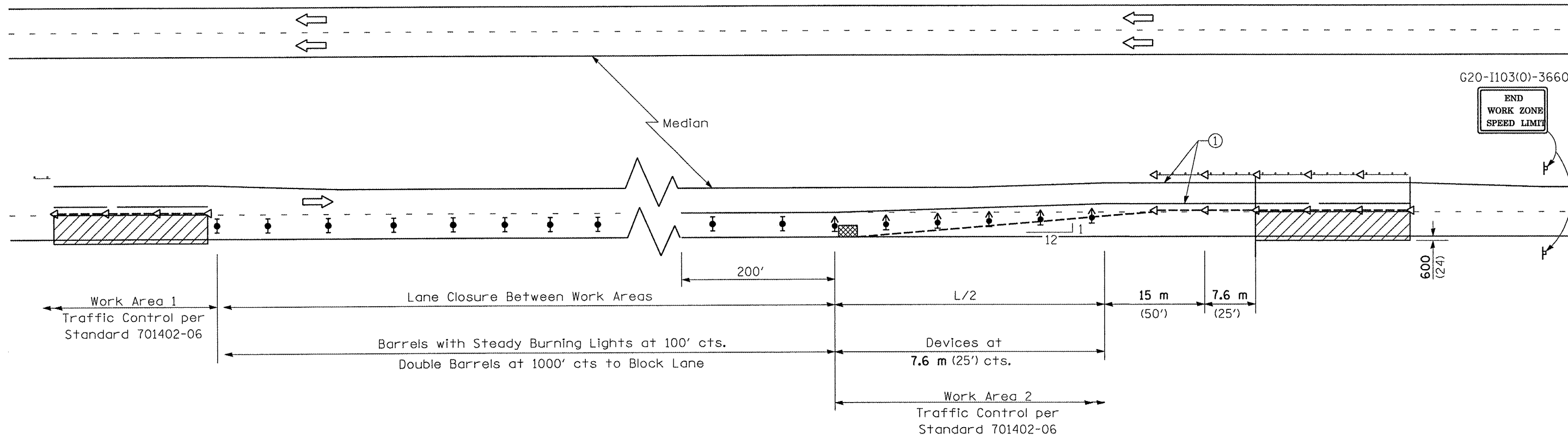
REVISED - ---
REVISED - ---
REVISED - ---
REVISED - ---

STATE OF ILLINOIS
DEPARTMENT OF TRANSPORTATION


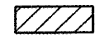
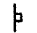





SCHEDULE OF QUANTITIES

SCALE: _____ SHEET NO. ___ OF ___ SHEETS STA. _____ TO STA. _____

F.A.I. RTE.	SECTION	COUNTY	TOTAL SHEETS	SHEET NO.
39	D4 DIP REPAIR 2008	WOODFORD	8	7
FED. ROAD DIST. NO. - [ILLINOIS] FED. AID PROJECT			CONTRACT NO. 68705	



SYMBOLS

-  Arrow board
-  Work area
-  Sign
-  Direction indicator barricade with steady burn monodirectional light
-  Type II drum with steady burn monodirectional light
-  Temporary concrete barrier
-  Monodirectional barrier wall/guardrail marker
-  Impact attenuator

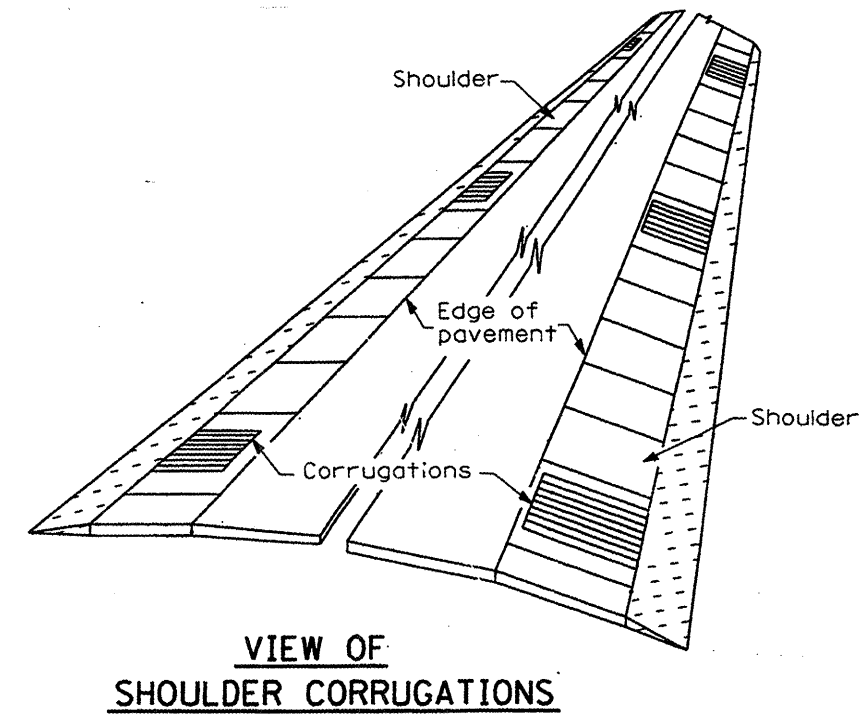
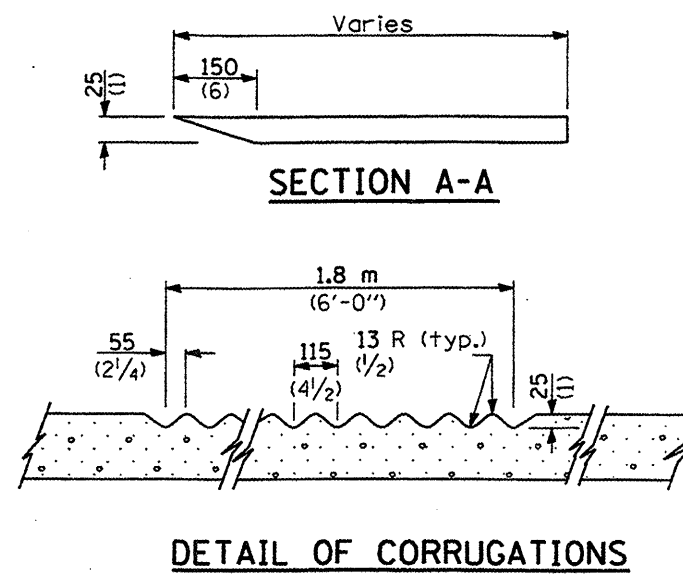
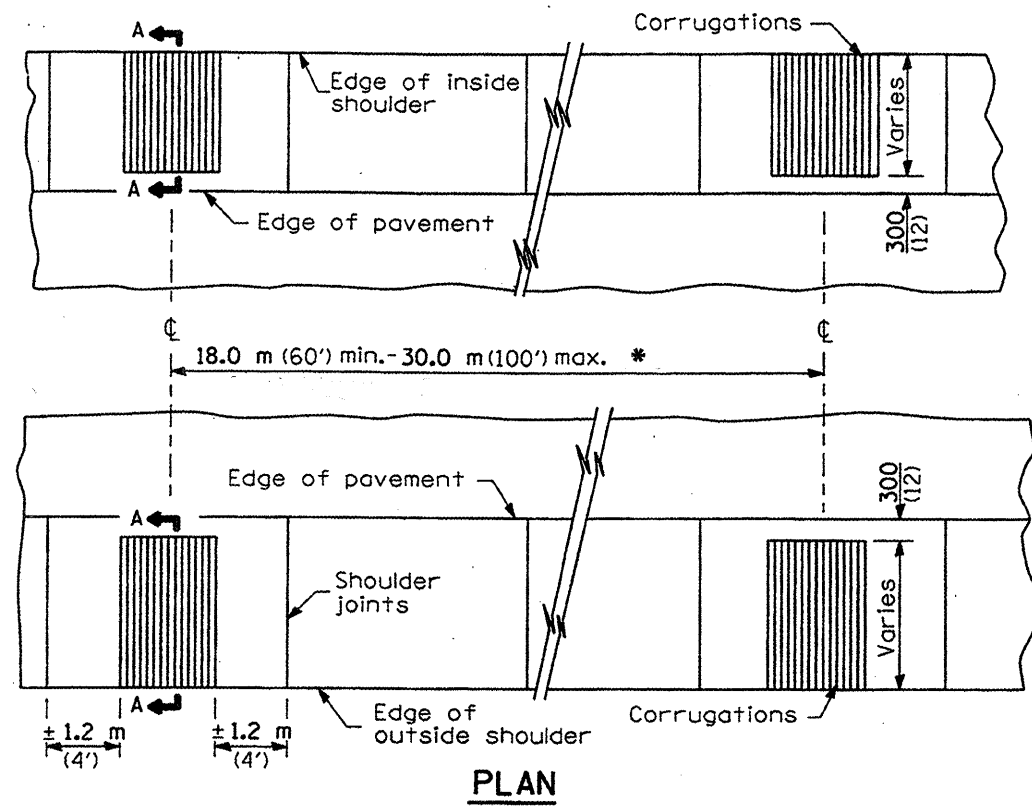
- ① Temporary pavement marking tape shall be placed throughout the taper and along-side the work area. The right edge line shall be white and the left edge line shall be yellow.
- ② Barrier wall/guardrail markers at 7.6 m (25'). Markers on right shall be white and markers on left shall be amber.

NORMAL POSTED SPEED	FORMULAS	
	Metric	English
45 mph or more	$L = 0.65WS$	$L = WS$

W = Width of offset in meters (feet).
S = Normal posted speed in mph.

All dimensions are in millimeters (inches) unless otherwise shown.

FILE NAME = S:\GEN\DRIFT\STD&PLNS\Squad\168705 1-3	USER NAME = brucebm	DESIGNED - ---	REVISED - ---	STATE OF ILLINOIS DEPARTMENT OF TRANSPORTATION	LANE CLOSURE DETAILS BETWEEN WORK AREAS	F.A.I. RTE. 39	SECTION D4 DIP REPAIR 2008	COUNTY WOODFORD	TOTAL SHEETS 9	SHEET NO. 8
PLANS.dgn	DRAWN - ---	REVISED - ---	SCALE: _____ SHEET NO. ___ OF ___ SHEETS STA. _____ TO STA. _____			FED. ROAD DIST. NO. _____	ILLINOIS FED. AID PROJECT			
PLOT SCALE = 200.0000 ' / IN.	CHECKED - ---	REVISED - ---								
PLOT DATE = 3/28/2008	DATE - _____	REVISED - ---								



PCC SHOULDER

* Match existing spacing

STATE OF ILLINOIS
DEPARTMENT OF TRANSPORTATION

RUMBLE STRIP DETAIL

FILE NAME = S:\GEN\DRAWING\STD&PLNS\Squad\68705 1-3\plans.dgn	USER NAME = lsgnedm	DESIGNED - ---	REVISED - ---	SCALE: _____ SHEET NO. ___ OF ___ SHEETS STA. _____ TO STA. _____	F.A.I. RTE. 39	SECTION D4 DIP REPAIR 2008	COUNTY WOODFORD	TOTAL SHEETS 9	SHEET NO. 9
PLOT SCALE = 200.0000 / IN.	CHECKED - ---	REVISED - ---	REVISED - ---		FED. ROAD DIST. NO. - [ILLINOIS] FED. AID PROJECT				
PLOT DATE = 3/26/2008	DATE - ---	REVISED - ---	REVISED - ---		CONTRACT NO. 68705				