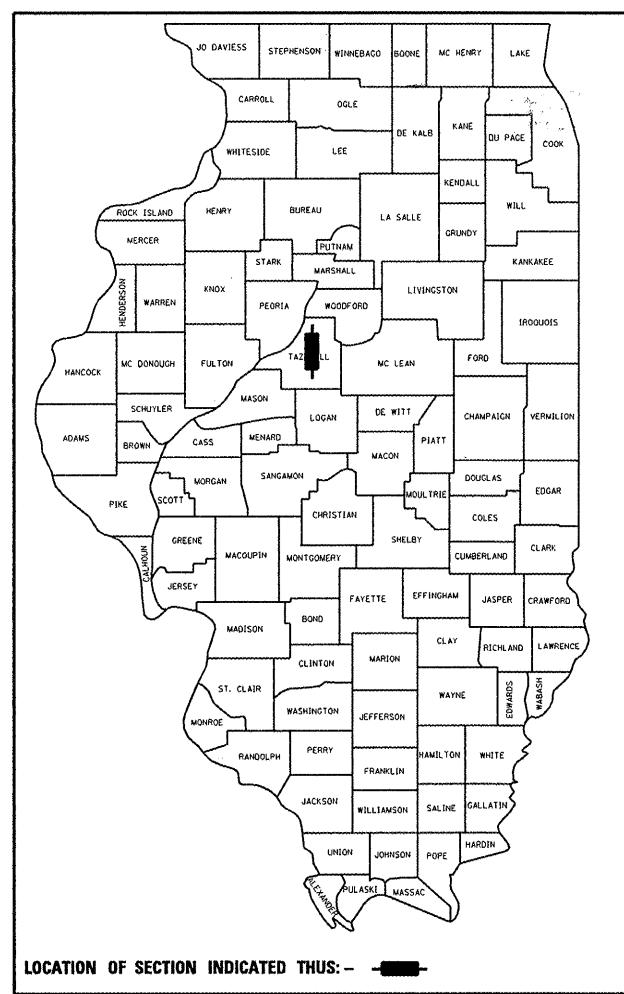


F.A.I. RTE.	SECTION	COUNTY	TOTAL SHEETS	SHEET NO.
174	(90-15)J	TAZEWELL	192	1
FED. ROAD DIST. NO.	ILLINOIS	CONTRACT NO. 68724		

**STATE OF ILLINOIS**  
**DEPARTMENT OF TRANSPORTATION**  
**DIVISION OF HIGHWAYS**

**PROPOSED**  
**HIGHWAY PLANS**

**FAI ROUTE 74**  
**SECTION (90-15)J**  
**PROJECT ACHSIP-074-4(236)099**  
**TAZEWELL COUNTY**  
**C-94-082-07**



LOCATION OF SECTION INDICATED THUS: - [black bar] -

**ADT - 53800**  
**SU - 2700 (5%)**  
**MU - 6400 (12%)**

STATE OF ILLINOIS  
DEPARTMENT OF TRANSPORTATION  
DIVISION OF HIGHWAYS

SUBMITTED *Monroe 20 08*

*May 9, 2008*  
*Eric E. Horn*  
DEPUTY DIRECTOR OF HIGHWAYS, REGION ENGINEER

*May 9, 2008*  
*Christine M. Reed*  
DIRECTOR OF HIGHWAYS, CHIEF ENGINEER

**PRINTED BY THE AUTHORITY**  
**OF THE STATE OF ILLINOIS**

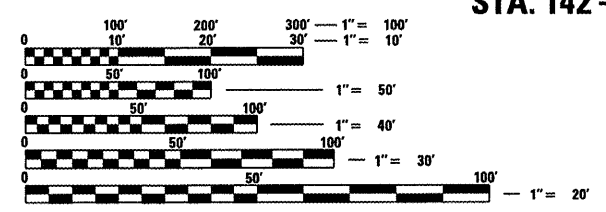
FOR INDEX OF SHEETS, SEE SHEET NO. 2

**STANDARDS:**

- |            |           |
|------------|-----------|
| 000001-05  | 701101-01 |
| 001006     | 701106-01 |
| 202001-01  | 701400-02 |
| 280001-04  | 701401-04 |
| 6300001-07 | 701901    |
| 630201-05  | 720011    |
| 631032-03  | 729001    |
| 635001     | 781001-02 |
| 635006-02  |           |
| 635011-01  |           |
| 636001-01  |           |
| 642001     |           |

**CADD STANDARDS:**

- 280001-D4  
280001-D4  
635101-D4

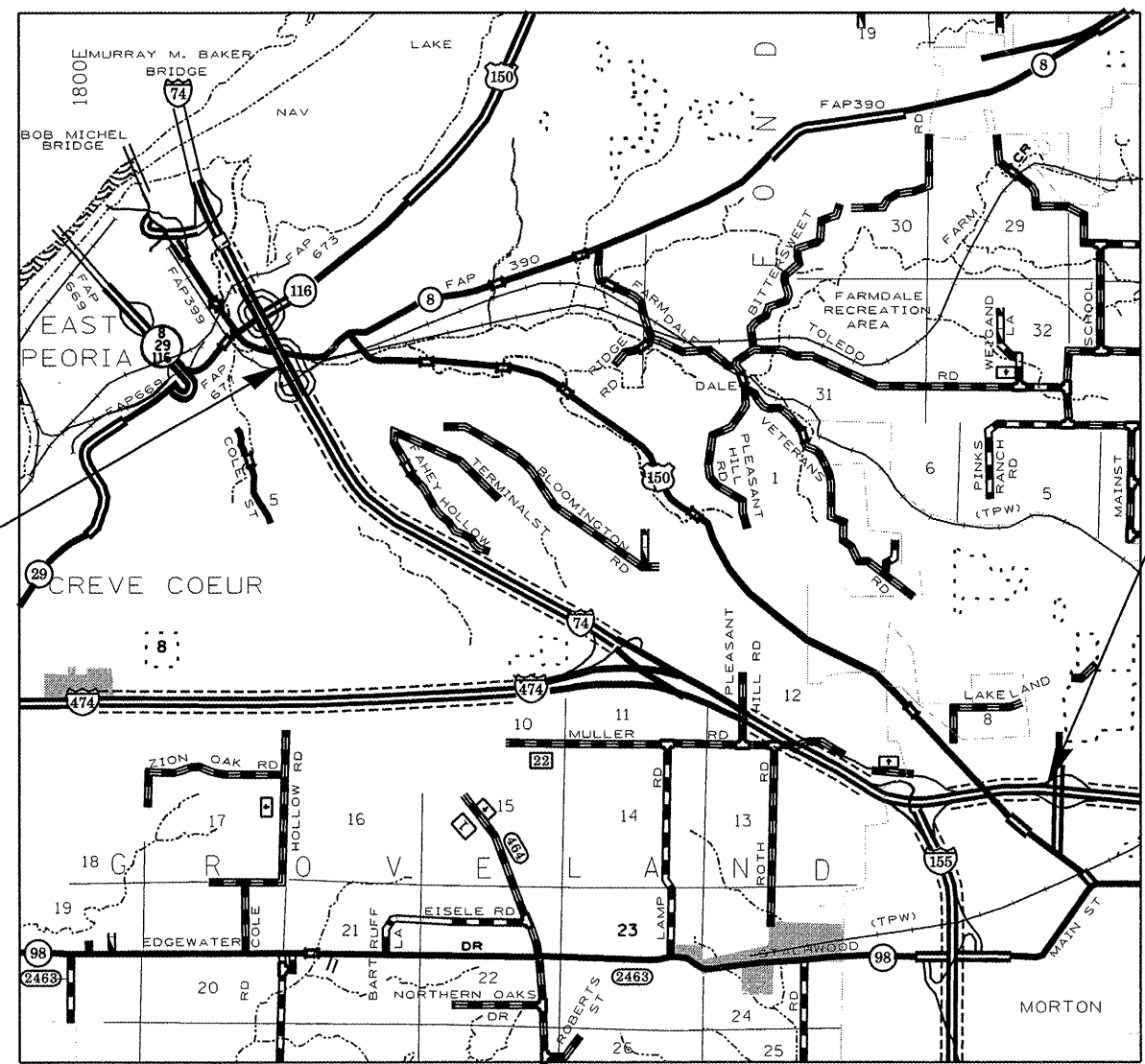


FULL SIZE PLANS HAVE BEEN PREPARED USING STANDARD ENGINEERING SCALES. REDUCED SIZED PLANS WILL NOT CONFORM TO STANDARD SCALES. IN MAKING MEASUREMENTS ON REDUCED PLANS, THE ABOVE SCALES MAY BE USED.

J.U.L.I.E.  
JOINT UTILITY LOCATION INFORMATION FOR EXCAVATION  
1-800-892-0123  
OR 811

PROJECT ENGINEER : SOBHI LABABIDI  
PROJECT MANAGER : RICHARD DOTSON

CONTRACT NO. 68724



PROJECT ENDS  
STA. 142 + 05

PROJECT BEGINS  
STA. 59 + 00

GROSS LENGTH OF PROJECT = 34320 FEET = 6.50 MILES  
NET LENGTH OF PROJECT = 26605 FEET = 5.04 MILES

**QC/QA CONCRETE**