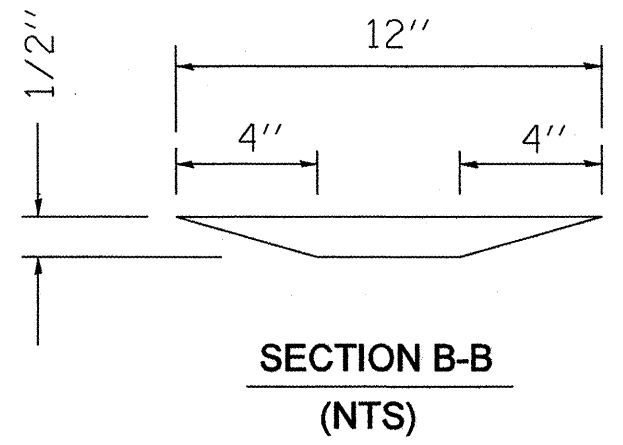
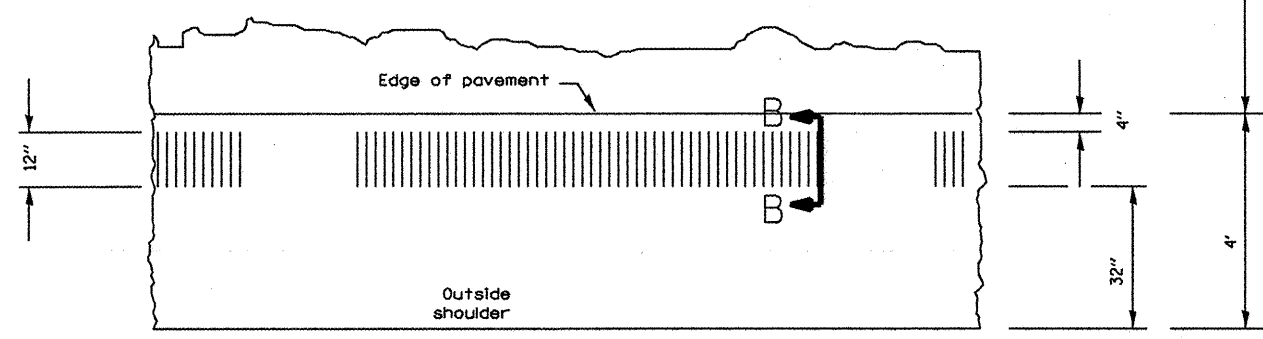
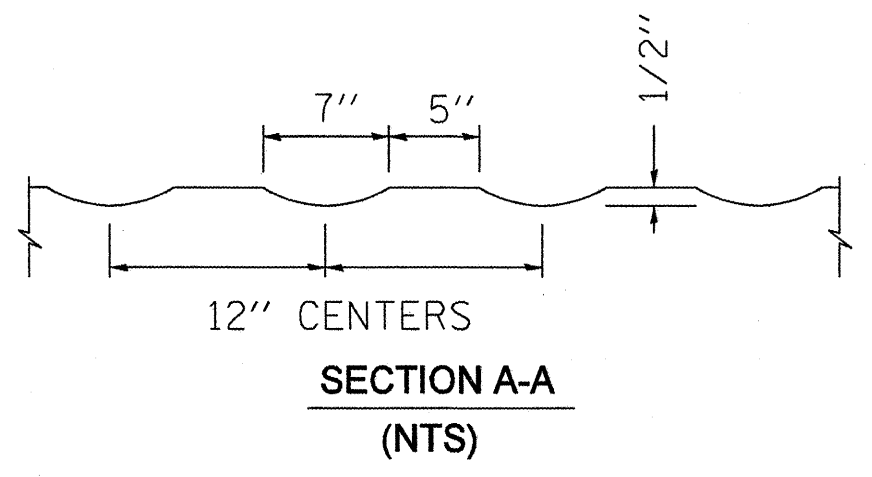
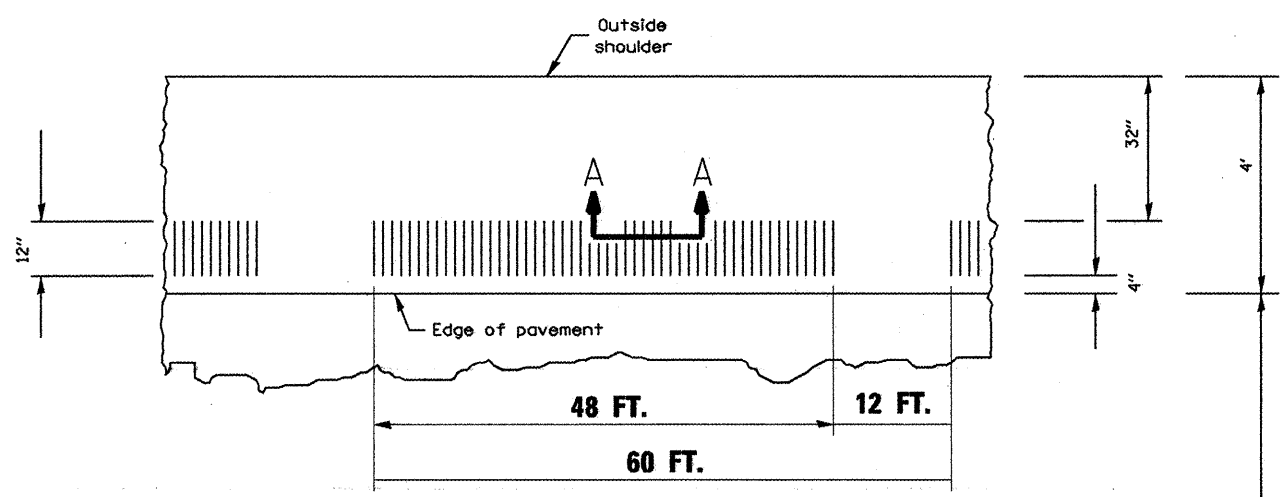


F.A. RTE.	SECTION	COUNTY	TOTAL SHEETS	SHEET NO.
653	1051-1	PUTNAM	24	13
STA.		TO STA.		
FED. ROAD DIST. NO.	ILLINOIS	FED. AID PROJECT		

GENERAL NOTES

1. THIS SANDARD GIVES CONSTRUCTION INSTALLATION DETAILS ONLY AND DOES NOT DETERMINE WHEN OR WHERE RUMBLESTRIPS ARE TO BE USED.
2. RUMBLE STRIPS SHALL BE OMMITED AT TURN AND AUXILARY LANES, ROAD APPROACHES, RESIDENCE, 250 FT. BEFORE ROAD INTERSECTIONS, AND OTHER INTERRUPTIONS AS DIRECTED BY THE PROJECT ENGINEER.



PLAN
INTERMITTENT RUMBLE STRIP
(NTS)

SECTION B-B
(NTS)

PLOT DATE = 3/14/2008
 PLOT SCALE = 1/8" = 1'-0"
 USER NAME = bryannj

REVISIONS	
NAME	DATE

ILLINOIS DEPARTMENT OF TRANSPORTATION

INTERMITTENT RUMBLE STRIP

SCALE: VERT. DRAWN BY
 HORIZ. CHECKED BY
 DATE