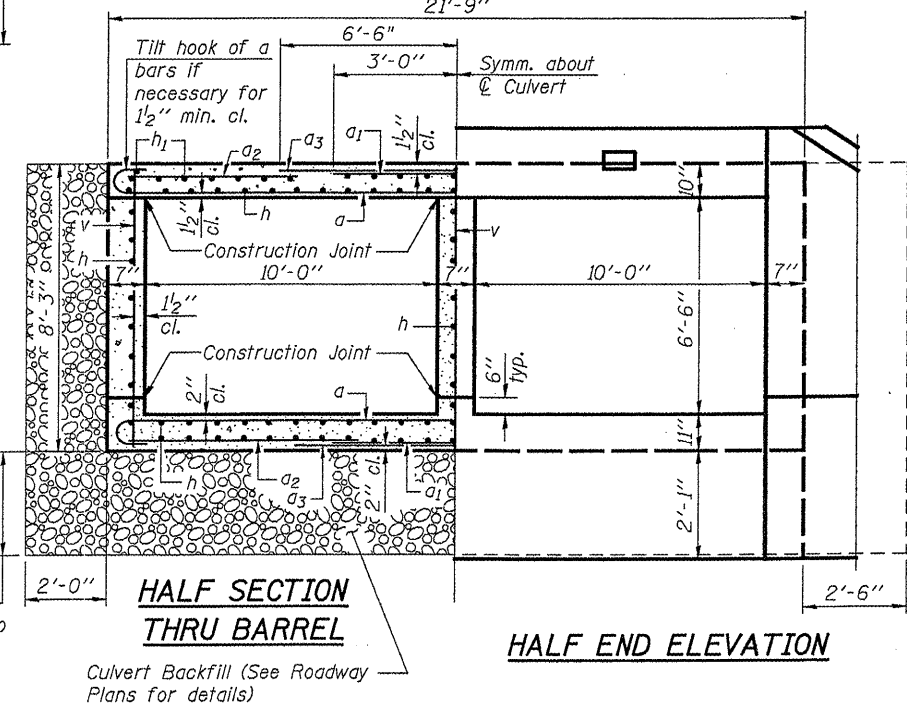
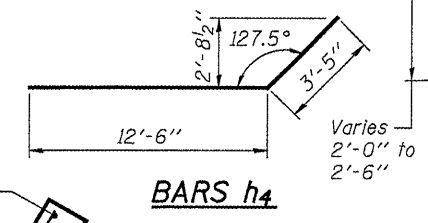
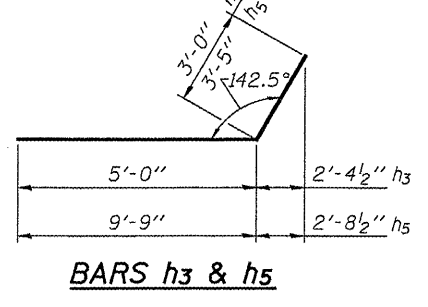
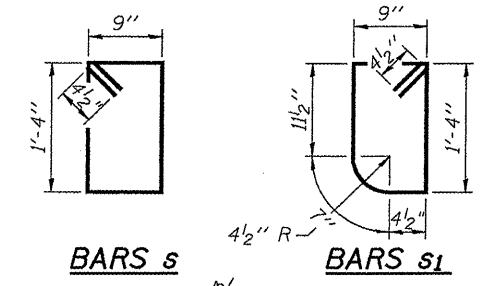
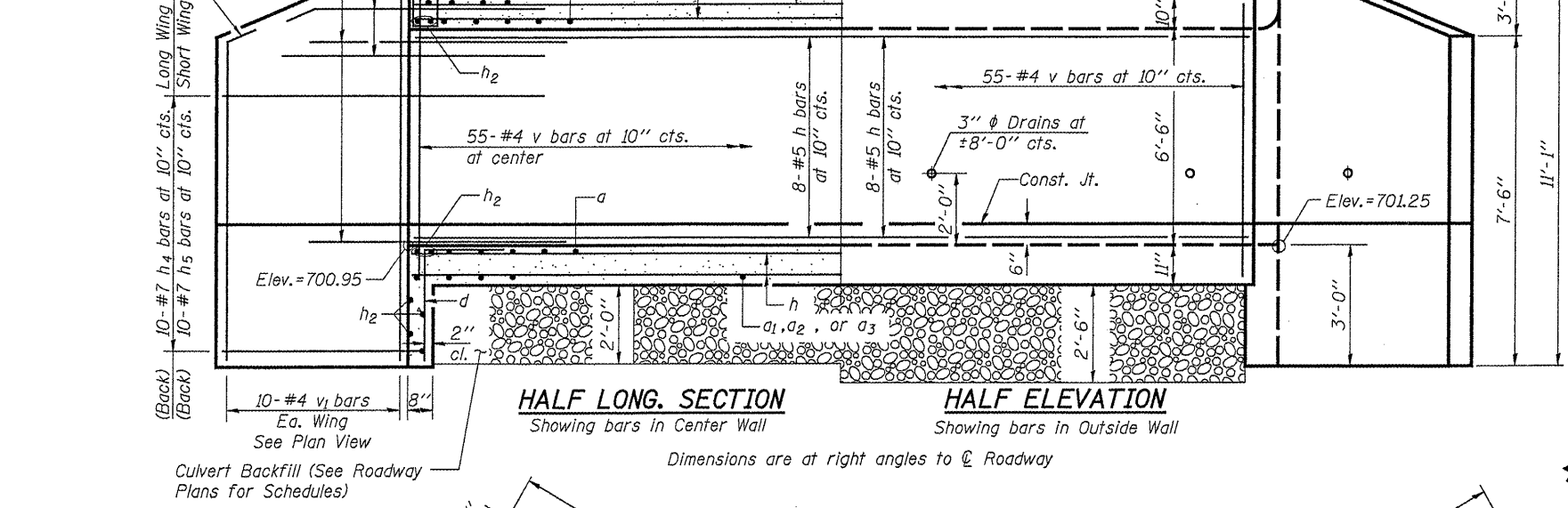


Contract # 68784

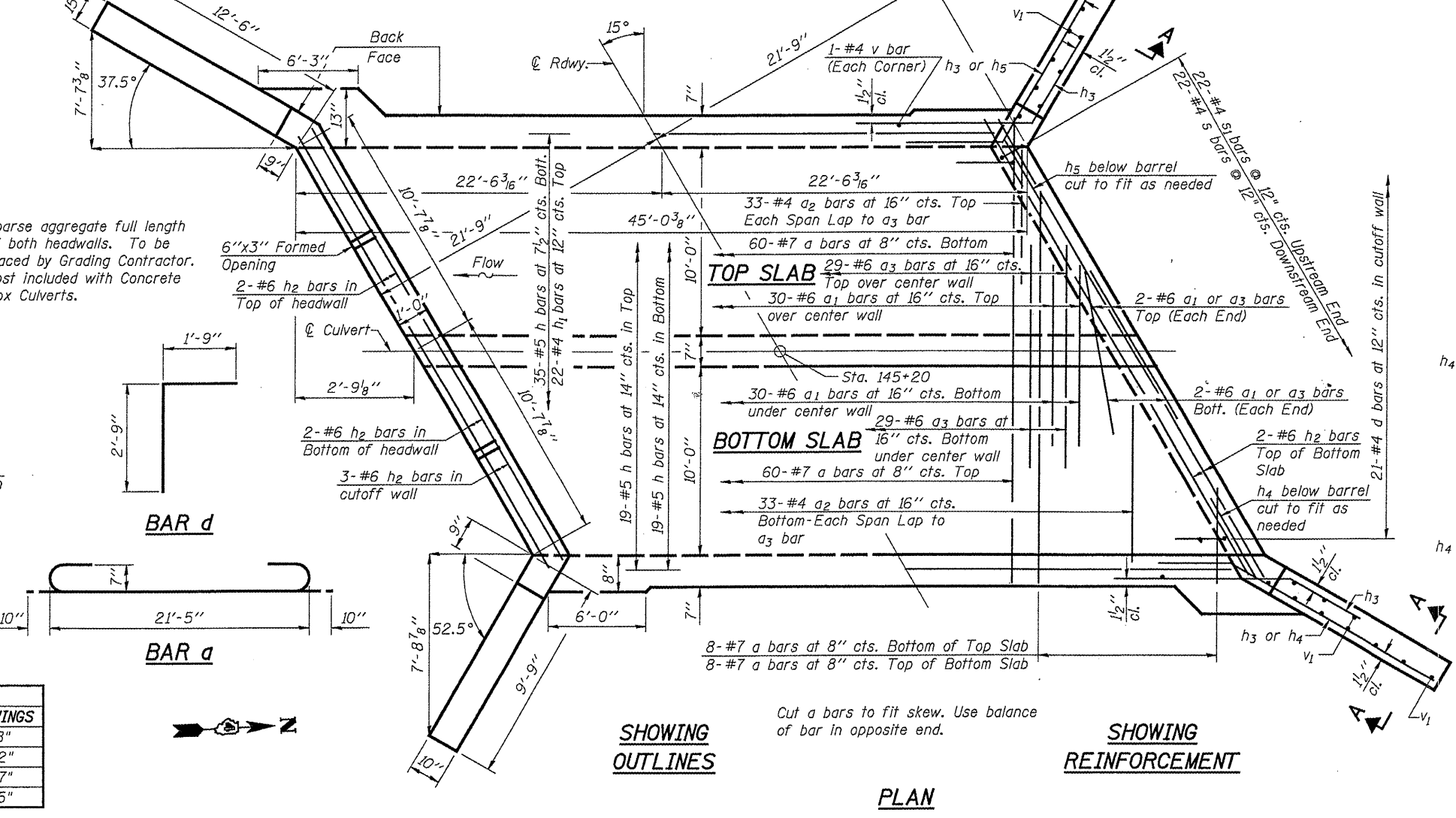
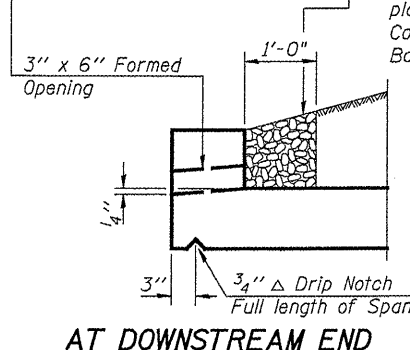
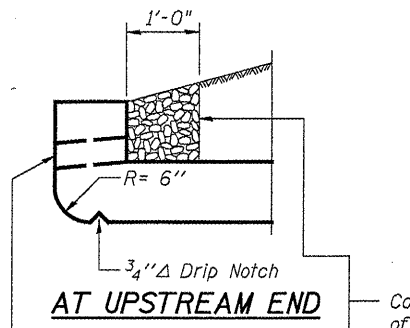
(Back)
5-#7 h₃ bars at 10" cts. Short Wing
5-#7 h₃ bars at 10" cts. Long Wing

(Front)
8-#7 h₃ bars at 10" cts. Short Wing
8-#7 h₃ bars at 10" cts. Long Wing

Bend in Field, typ.
s bar (s₁ bar at opposite end)



Note:
A distance of half the length of the wingwall but not less than six feet of the barrel shall be poured monolithically with the wingwalls.



BILL OF MATERIAL

Bar	No.	Size	Length	Shape
a	136	#7	23'-1"	
a ₁	68	#6	6'-0"	
a ₂	132	#4	5'-7"	
a ₃	66	#6	13'-0"	
d	42	#4	4'-6"	
h	97	#5	44'-8"	
h ₁	22	#4	44'-8"	
h ₂	18	#6	22'-2"	
h ₃	52	#7	8'-0"	
h ₄	20	#7	15'-11"	
h ₅	20	#7	13'-2"	
s	22	#4	4'-11"	
s ₁	22	#4	4'-9"	
v	169	#4	7'-11"	
v ₁	40	#4	10'-9"	
Concrete Box Culverts			Cu. Yd.	104.7
Reinforcement Bars			Pound	18,080

SECTION A-A

CULVERT DETAILS
ILLINOIS ROUTE 98 OVER DILLON CREEK
F.A.U. ROUTE 6758 - SEC. 7-BR
TAZEWELL COUNTY
STATION 145+20 STRUCTURE NO. 090-2018
WHA #1223D07

MIN. BAR LAPS

SIZE	LAP-BARRELS	LAP-WINGS
#4	1'-4"	1'-8"
#5	1'-8"	2'-2"
#6	2'-0"	2'-7"
#7	2'-9"	3'-5"

Cut a bars to fit skew. Use balance of bar in opposite end.

PLAN