



CLOSURE NOTES

Existing Stop signs on Ramps shall be covered during the I-74 closure to allow free flow of Interstate traffic across ramps.

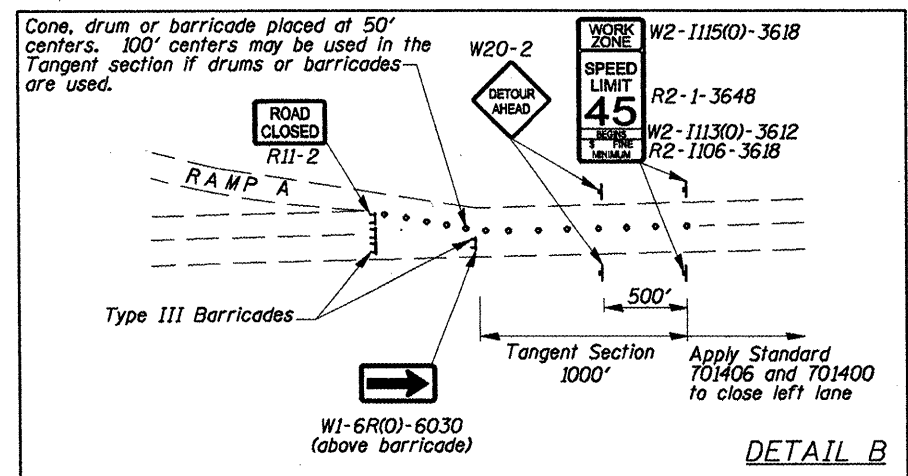
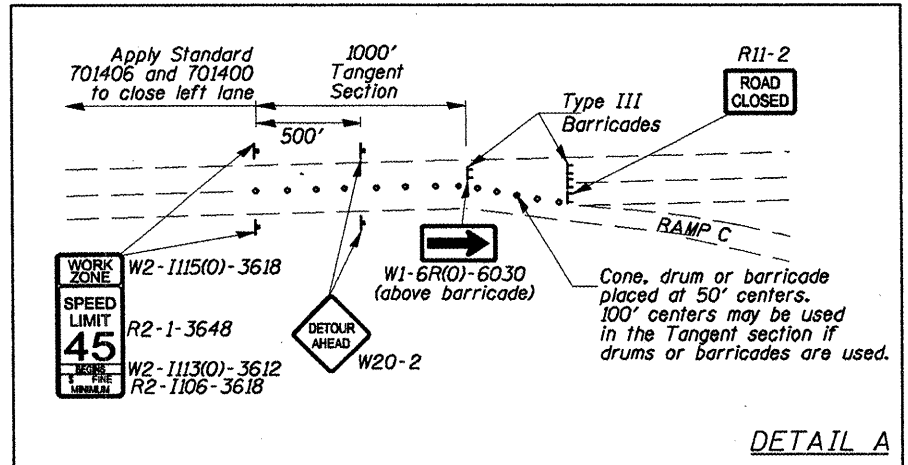
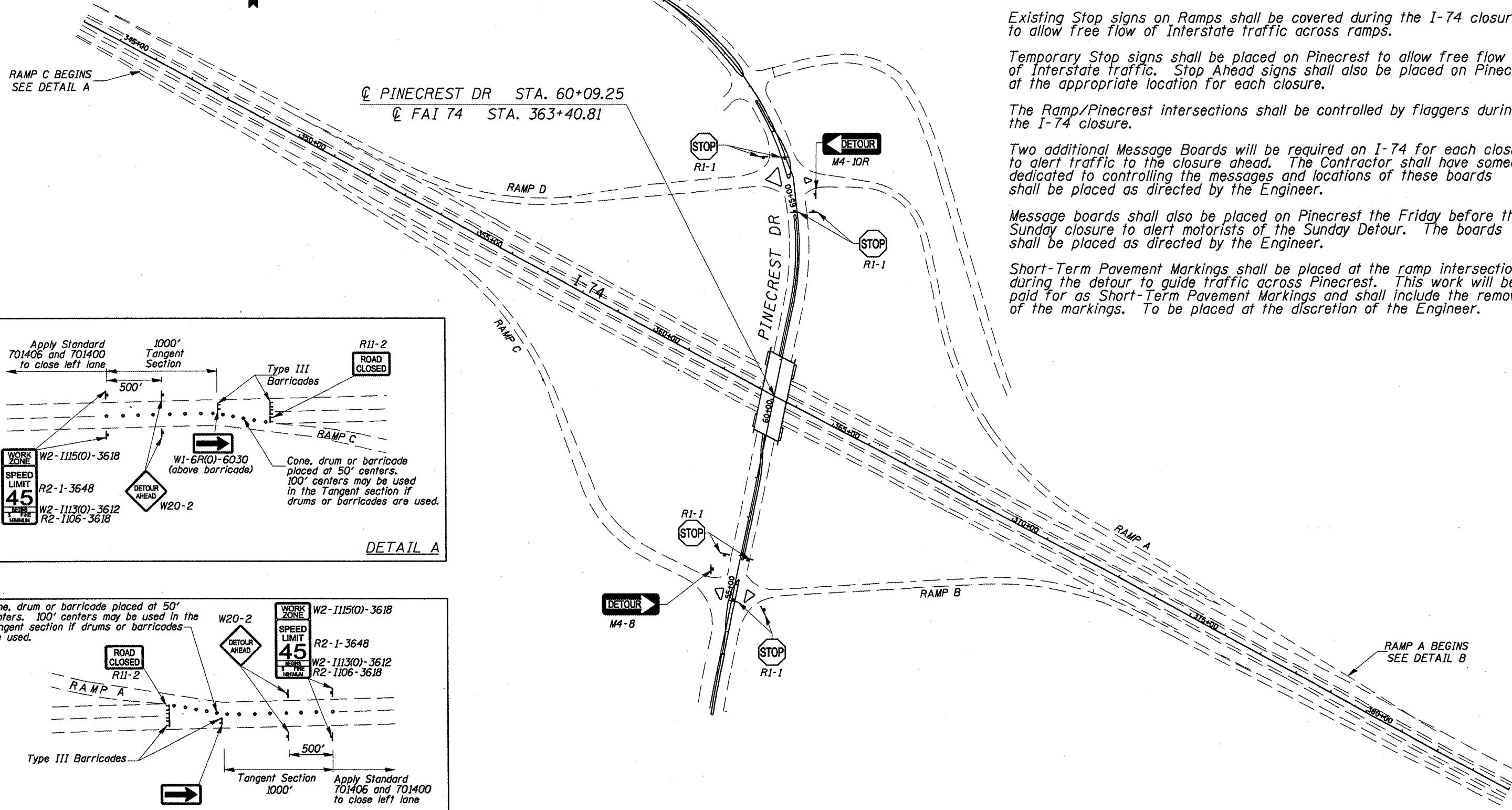
Temporary Stop signs shall be placed on Pinecrest to allow free flow of Interstate traffic. Stop Ahead signs shall also be placed on Pinecrest at the appropriate location for each closure.

The Ramp/Pinecrest intersections shall be controlled by flaggers during the I-74 closure.

Two additional Message Boards will be required on I-74 for each closure to alert traffic to the closure ahead. The Contractor shall have someone dedicated to controlling the messages and locations of these boards shall be placed as directed by the Engineer.

Message boards shall also be placed on Pinecrest the Friday before the Sunday closure to alert motorists of the Sunday Detour. The boards shall be placed as directed by the Engineer.

Short-Term Pavement Markings shall be placed at the ramp intersection during the detour to guide traffic across Pinecrest. This work will be paid for as Short-Term Pavement Markings and shall include the removal of the markings. To be placed at the discretion of the Engineer.



FILE NAME =	USER NAME = mofaddenjk	DESIGNED -	REVISED -	STATE OF ILLINOIS DEPARTMENT OF TRANSPORTATION	I-74 TEMPORARY DETOUR DETAIL	F.A.I. RTE.	SECTION	COUNTY	TOTAL SHEETS	SHEET NO.	
c:\projects\pinecrest_bridge\468883-design.dgn		DRAWN -	REVISED -			74	D4 MCHD 2008	TAZEWELL	14	9	
PLOT SCALE = 1/8" = 100' / IN.		CHECKED -	REVISED -			CONTRACT NO. 68803					
PLOT DATE = 3/28/2008		DATE -	REVISED -			NOT TO SCALE	STA.	TO STA.	FED. ROAD DIST. NO. 4 I-74 FED. AID PROJECT		