

STATE OF ILLINOIS  
DEPARTMENT OF TRANSPORTATION

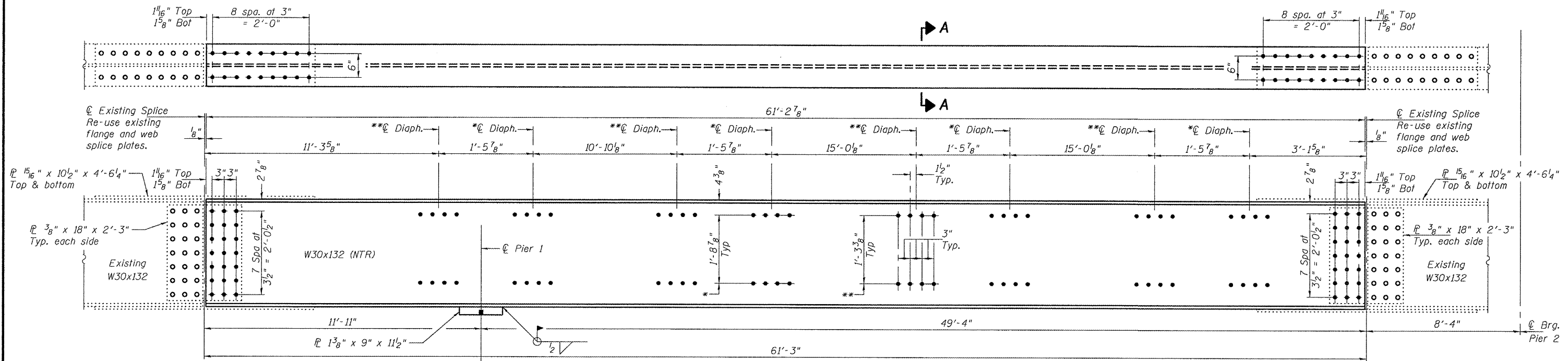
ROUTE NO.	SECTION	COUNTY	SHEET NO.	SHEET
FAI 74	ΔΔ	Tazewell	14	13
FED. ROAD DIST. NO. 7	ILLINOIS	FED. AID PROJECT		

SHEET NO. 3

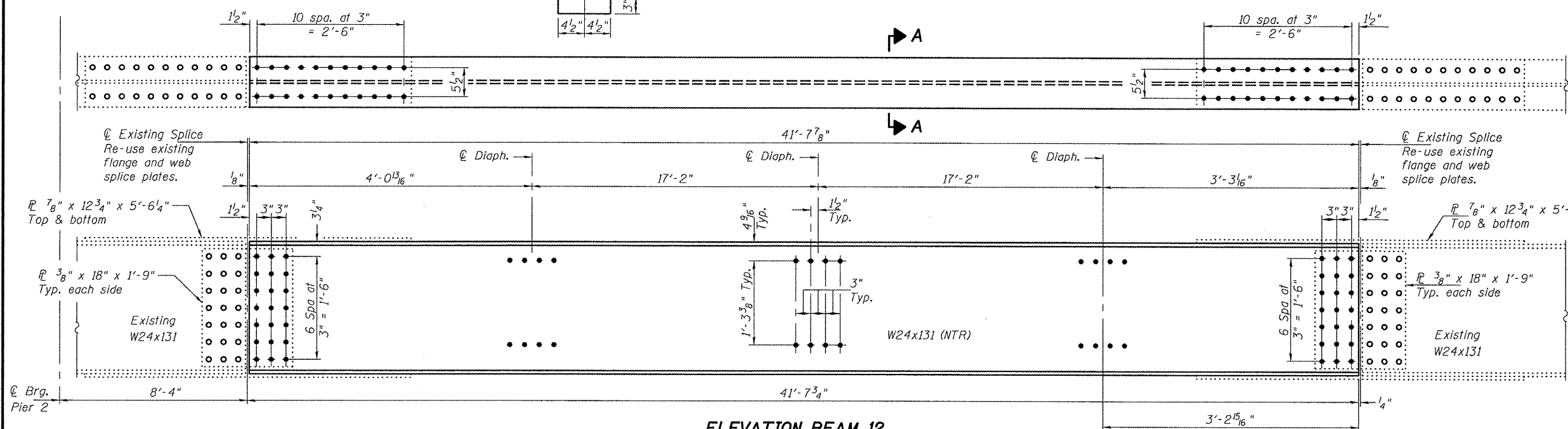
4 SHEETS

Contract Number: 68803  
ΔΔ D4MCHD2008

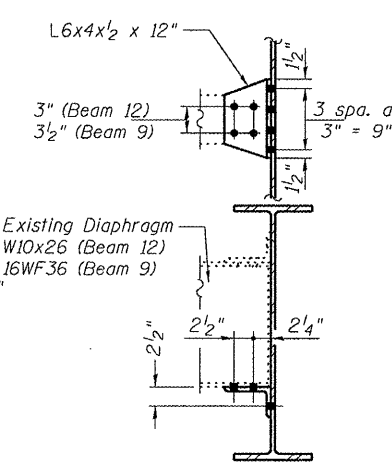
\*Diaphragms connecting to Beam 8.  
\*\*Diaphragms connecting to Beam 10.



**ELEVATION BEAM 9**  
(Looking West)

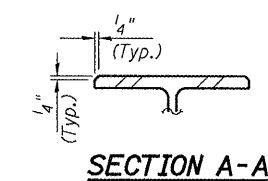


**ELEVATION BEAM 12**  
(Looking West)



**BOTTOM CLIP ANGLE REPLACEMENT DETAIL**

Field drill holes in angle using holes in diaphragm as template.



**SECTION A-A**

**BEAM REPLACEMENT DETAILS**

F.A.I. RT. 74  
TAZEWELL COUNTY  
SN 090-0091

The cost of all field drilling required for installation of the steel members is included with Furnishing and Erecting Structural Steel.

- Notes:  
Field drill diaphragm holes in new beams using holes in new and existing clip L's as a template.  
Natural camber of new beam shall be placed upward for fabrication.  
Fasteners shall be high strength bolts. Flange splice holes shall be 15/16\"/>

DESIGNED	A.T.H.
CHECKED	S.J.B.
DRAWN	Drew Christopher
CHECKED	A.T.H. S.J.B.

April 15, 2008  
EXAMINED *Carl Krueger*  
ENGINEER OF STRUCTURAL SERVICES  
PASSED *Ralph E. Anderson*  
ENGINEER OF BRIDGES AND STRUCTURES

REP-2 1-27-2000