

F.A.I. ROUTE	SECTION	COUNTY	TOTAL SHEETS	SHEET NO.
74	*	VERMILION	12	1
* D5 SCOUR MITIGATION 2008-1		CONTRACT NO. 70013		

STATE OF ILLINOIS
DEPARTMENT OF TRANSPORTATION
DIVISION OF HIGHWAYS

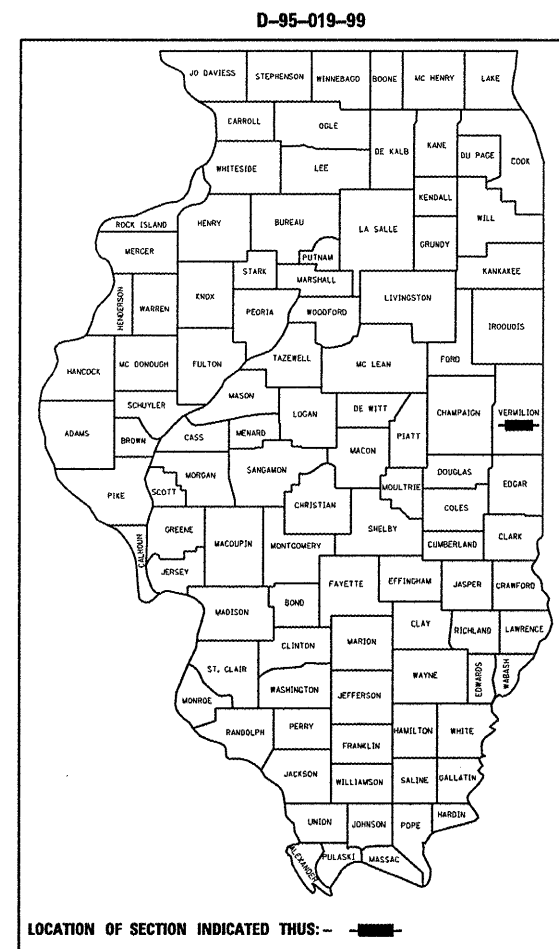
**PROPOSED
HIGHWAY PLANS**

F.A.I. ROUTE 74
SECTION D5 SCOUR MITIGATION 2008-1
VERMILION COUNTY

C-95-047-99

VARIOUS DISTRICT WIDE SCOUR MITIGATION

FOR INDEX OF SHEETS, SEE SHEET NO. 2
FOR SUMMARY OF QUANTITIES, SEE SHEET NO. 4



SECTION: D-5 SCOUR MITIGATION
LOCATION NO. 1

S. N. 092-0006 (EB) &
S. N. 092-0007 (WB)
STATION 1755+16.00

SECTION: D-5 SCOUR MITIGATION
LOCATION NO. 2

S. N. 092-0014 (WB) &
S. N. 092-0015 (EB)
STATION 1992+54.00

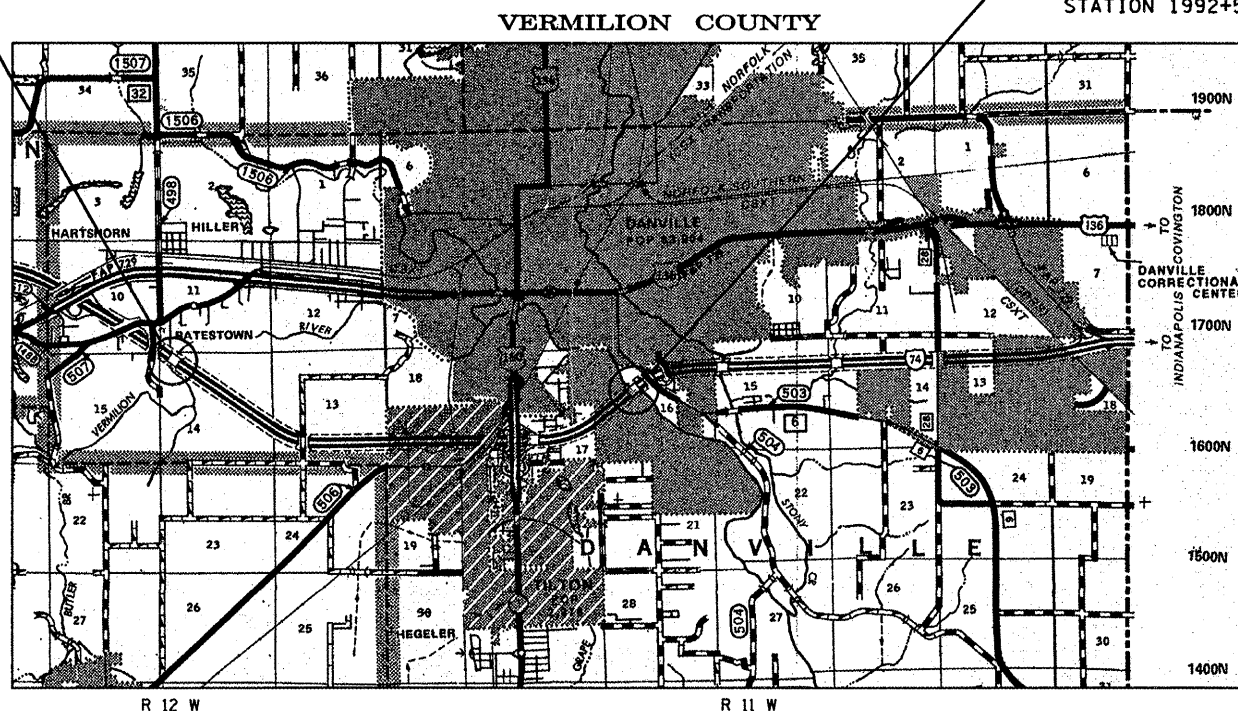
CURRENT ADT /DESIGN ADT
CURRENT ADT 20,500 (2005) - LOCATION #1
CURRENT ADT 27,600 (2005) - LOCATION #2

DESIGN DESIGNATION
N/A

J.U.L.I.E.
JOINT UTILITY LOCATION INFORMATION FOR EXCAVATION
1-800-892-0123
OR 811

PROJECT ENGINEER: TIM BRANDENBURG
SQUAD LEADER: EURNIE GARVER
DESIGNER: BRIAN HOGAN
(217)465-4181

CONTRACT NO. 70013



F.A.I. ROUTE	SECTION	COUNTY	TOTAL SHEETS	SHEET NO.
74	*	VERMILION	12	2
F.A.I. ROUTE		SECTION	PROJECT	
* D5 SCOUR MITIGATION 2008-1		CONTRACT NO. 70013		

INDEX OF SHEETS

<u>SHEET NO.</u>	<u>DESCRIPTION</u>
1	COVER SHEET
2	INDEX OF SHEETS
2	LIST OF HIGHWAY STANDARDS
3	GENERAL NOTES
4	SUMMARY OF QUANTITIES
5	PLAN SHEET S.N. 092-0006 & 0007
6	PROFILE SHEET S.N. 092-0006 & 0007
7	PLAN SHEET S.N. 092-0014 & 0015
8	PROFILE SHEET S.N. 092-0014 & 0015
9-10	DETAILS
11-12	SUGGESTED CONTRACTOR ACCESS ROUTES

LIST OF HIGHWAY STANDARDS

<u>STANDARD NO.</u>	<u>DESCRIPTION</u>
000001-05	STANDARD SYMBOLS, ABBREVIATIONS, AND PATTERNS
001006	DECIMAL OF AN INCH AND OF A FOOT
665001-01	WOVEN WIRE FENCE
701101-01	OFF-ROAD OPERATIONS, MULTILANE, 4.5 m (15') TO 600 mm (24") FROM PAVEMENT EDGE
701106-01	OFF-ROAD OPERATIONS, MULTILANE, MORE THAN 4.5 m (15') AWAY
701400-02	APPROACH TO LANE CLOSURE, FREEWAY/EXPRESSWAY
701406-04	LANE CLOSURE, FREEWAY/EXPRESSWAY, DAY OPERATIONS ONLY
701901	TRAFFIC CONTROL DEVICES

ILLINOIS DEPARTMENT OF TRANSPORTATION
INDEX OF SHEETS AND
LIST OF HIGHWAY STANDARDS
 F.A.I. ROUTE 74
 SECTION D5 SCOUR MITIGATION 2008-1
 VERMILION COUNTY
 SCALE: N/A
 DATE: 02-07-08
 DRAWN BY: CADD
 CHECKED BY:

F.A.I. ROUTE	SECTION	COUNTY	TOTAL SHEETS	SHEET NO.
74	*	VERMILION	12	3
FEDERAL AID PROJECT NO.		ILLINOIS PROJECT		
* D5 SCOUR MITIGATION 2008-1			CONTRACT NO. 70013	

GENERAL NOTES

G. N. -100
ENGLISH UNITS OF MEASUREMENT SHALL GOVERN OVER AND SUPERSEDE ANY METRIC UNITS SHOWN IN THIS CONTRACT. WHERE INCLUDED, METRIC UNITS ARE FOR INFORMATION ONLY.

G. N. -105.07B
EXISTING STATE-OWNED AND MAINTAINED UTILITY LINES ARE SHOWN ON THE PLANS TO INDICATE THEIR PRESENCE AND APPROXIMATE LOCATION. THE CONTRACTOR SHALL SECURE AN APPROVED LOCATING FIRM TO LOCATE STATE-OWNED UTILITIES PRIOR TO COMMENCING ANY EXCAVATION IN THE VICINITY OF THESE LINES IN ACCORDANCE TO SECTION 803 OF THE STANDARD SPECIFICATIONS. SHOULD ANY OF THE LINES BE DAMAGED BY THE CONTRACTOR'S OPERATION, THE CONTRACTOR SHALL REPAIR THEM TO THE SATISFACTION OF THE ENGINEER AT NO COST TO THE STATE.

ALSO THERE MAY BE UTILITIES PRESENT WHICH WERE INSTALLED BY THE STATE BUT ARE MAINTAINED BY OTHERS (CITY, TOWN, ETC.) THE APPROXIMATE LOCATIONS OF THESE LINES ARE ALSO SHOWN ON THE PLANS ALONG WITH THE NAME OF THE MAINTAINING AGENCY. THE CONTRACTOR SHALL COORDINATE THE LOCATION OF THESE LINES WITH THE LOCAL AGENCY PRIOR TO COMMENCING ANY EXCAVATION OR BORING IN THEIR VICINITY. SHOULD THESE LINES BE DAMAGED BY THE CONTRACTOR'S OPERATIONS, THE CONTRACTOR SHALL REPAIR THEM TO THE SATISFACTION OF, AND AT NO COST TO, THE LOCAL AGENCY AND THE STATE.

MR. ADRIAN GREENWELL - HIGHWAY LIGHTING
ILLINOIS DEPARTMENT OF TRANSPORTATION
13473 IL HWY 133
P.O. BOX 610
PARIS, IL 61944

G. N. -105.09A
ALL ELEVATIONS SHOWN IN THE PLANS ARE BASED ON NORTH AMERICAN VERTICAL DATUM OF 1988. (NAVD 88)

G. N. -281
THE RIPRAP GRADATION SHALL BE IN ACCORDANCE WITH THE GRADATION SPECIFIED IN THE PLANS OR, WITH APPROVAL OF THE ENGINEER, A RIPRAP GRADATION MEETING A D50 GREATER THAN OR EQUAL TO 0.8 FEET FOR A4 AND 1.1 FEET FOR A5. D50 IS DEFINED AS THE MEAN ROCK SIZE AS DESCRIBED IN THE FHWA HYDRAULIC ENGINEERING CIRCULARS (HEC 11, HEC 14 AND HEC 15).

IF GRAVEL IS USED FOR THE BEDDING MATERIAL UNDER RIPRAP, THE GRAVEL SHALL BE CRUSHED AS ALLOWED UNDER ARTICLE 1005.01.

ILLINOIS DEPARTMENT OF TRANSPORTATION
GENERAL NOTES
F.A.I. ROUTE 74
SECTION D5 SCOUR MITIGATION 2008-1
VERMILION COUNTY

SCALE: N/A
DATE: 02-07-08

DRAWN BY: CADD
CHECKED BY:

F.A.I. ROUTE	SECTION	COUNTY	TOTAL SHEETS	SHEET NO.
74	*	VERMILION	12	4
FORM NO.	REVISION	PROJECT		
* D5 SCOUR MITIGATION 2008-1			CONTRACT NO. 70013	

SUMMARY OF QUANTITIES

LOCATION OF WORK:

VERMILION COUNTY
URBAN MULTILANE
100% STATE
MINOR
STRUCTURE
REPAIR

CONSTRUCTION TYPE CODE:

SFTY-2A

STR. #092-0006 STR. #092-0014
& #092-0007 & #092-0015

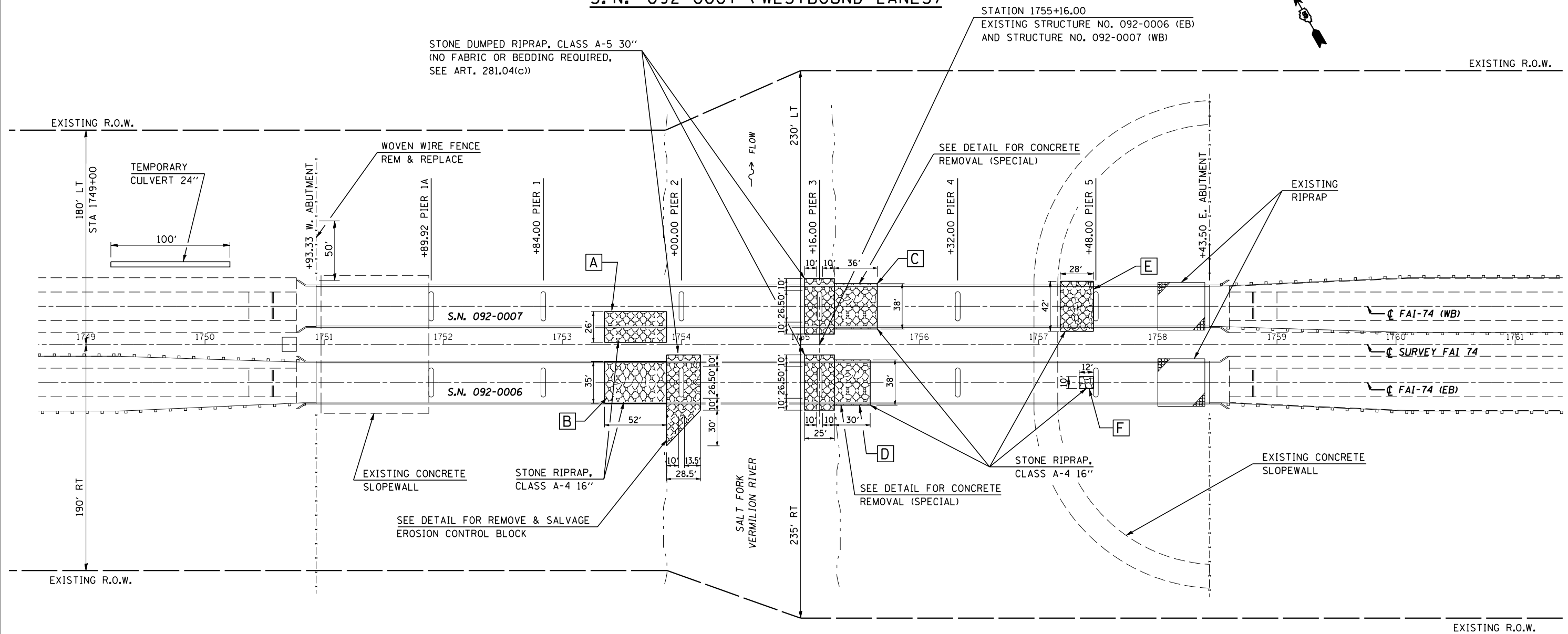
<u>CODE NO.</u>	<u>ITEM</u>	<u>UNIT</u>	<u>TOTAL QUANTITY</u>	<u>LOCATION #1</u>	<u>LOCATION #2</u>
28100107	STONE RIPRAP, CLASS A4	SQ YD	804.0	776.0	28.0
28100709	STONE DUMPED RIPRAP, CLASS A5	SQ YD	1050.0	431.0	619.0
28200200	FILTER FABRIC	SQ YD	804.0	776.0	28.0
50102500	CONCRETE REMOVAL (SPECIAL)	CU YD	23.0	23.0	0.0
66500105	WOVEN WIRE FENCE, 4'	FOOT	50.0	50.0	0.0
66502300	WOVEN WIRE FENCE REMOVAL	FOOT	50.0	50.0	0.0
67100100	MOBILIZATION	L SUM	1.0	0.5	0.5
70100700	TRAFFIC CONTROL AND PROTECTION, STANDARD 701406	L SUM	1.0	1.0	0.0
X0325888	TEMPORARY CULVERT 24"	FOOT	100.0	100.0	0.0
X7015005	CHANGEABLE MESSAGE SIGN	CAL DA	14.0	14.0	0.0
XX006681	REMOVE AND SALVAGE EROSION CONTROL BLOCK	L SUM	1.0	1.0	0.0

ILLINOIS DEPARTMENT OF TRANSPORTATION
SUMMARY OF QUANTITIES
F.A.I. ROUTE 74
SECTION D5 SCOUR MITIGATION 2008-1
VERMILION COUNTY

SCALE: N/A DRAWN BY: CADD
DATE: 02-07-08 CHECKED BY:

F.A.I. ROUTE	SECTION	COUNTY	TOTAL SHEETS	SHEET NO.
74		VERMILION	12	5
PROJECT		CONTRACT NO. 70013		
* D5 SCOUR MITIGATION 2008-1				

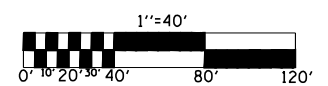
S.N. 092-0006 (EASTBOUND LANES)
S.N. 092-0007 (WESTBOUND LANES)



SCOUR REPAIR SCHEDULE

LOCATION	FABRIC AREA (SY)	REPAIR AREA (SY)	TYPE OF REPAIR	RIPRAP THICKNESS (IN)	BEDDING THICKNESS (IN)	RIPRAP ESTIMATED TONS	WOVEN WIRE FENCE (FT)	CONC. REMOVAL (SPECIAL) (CY)	REM & SALVAGE EROSION CONTROL BLOCK (L SUM)
PIER #2 (S)	0.0	185.0	A-5	30	0	238.0	50.0	0.0	1.0
PIER #3 (N)	0.0	123.0	A-5	30	0	157.5	0.0	0.0	0.0
PIER #3 (S)	0.0	123.0	A-5	30	0	157.5	0.0	0.0	0.0
A	150.0	150.0	A-4	16	6	101.0	0.0	0.0	0.0
B	202.0	202.0	A-4	16	6	135.0	0.0	0.0	0.0
C	152.0	152.0	A-4	16	6	101.0	0.0	11.5	0.0
D	127.0	127.0	A-4	16	6	85.0	0.0	11.5	0.0
E	131.0	131.0	A-4	16	6	88.0	0.0	0.0	0.0
F	14.0	14.0	A-4	16	6	9.0	0.0	0.0	0.0

NOTE:
 UNDER NO CIRCUMSTANCES
 ARE THE BRIDGE PIER
 FOOTINGS TO BE UNCOVERED.



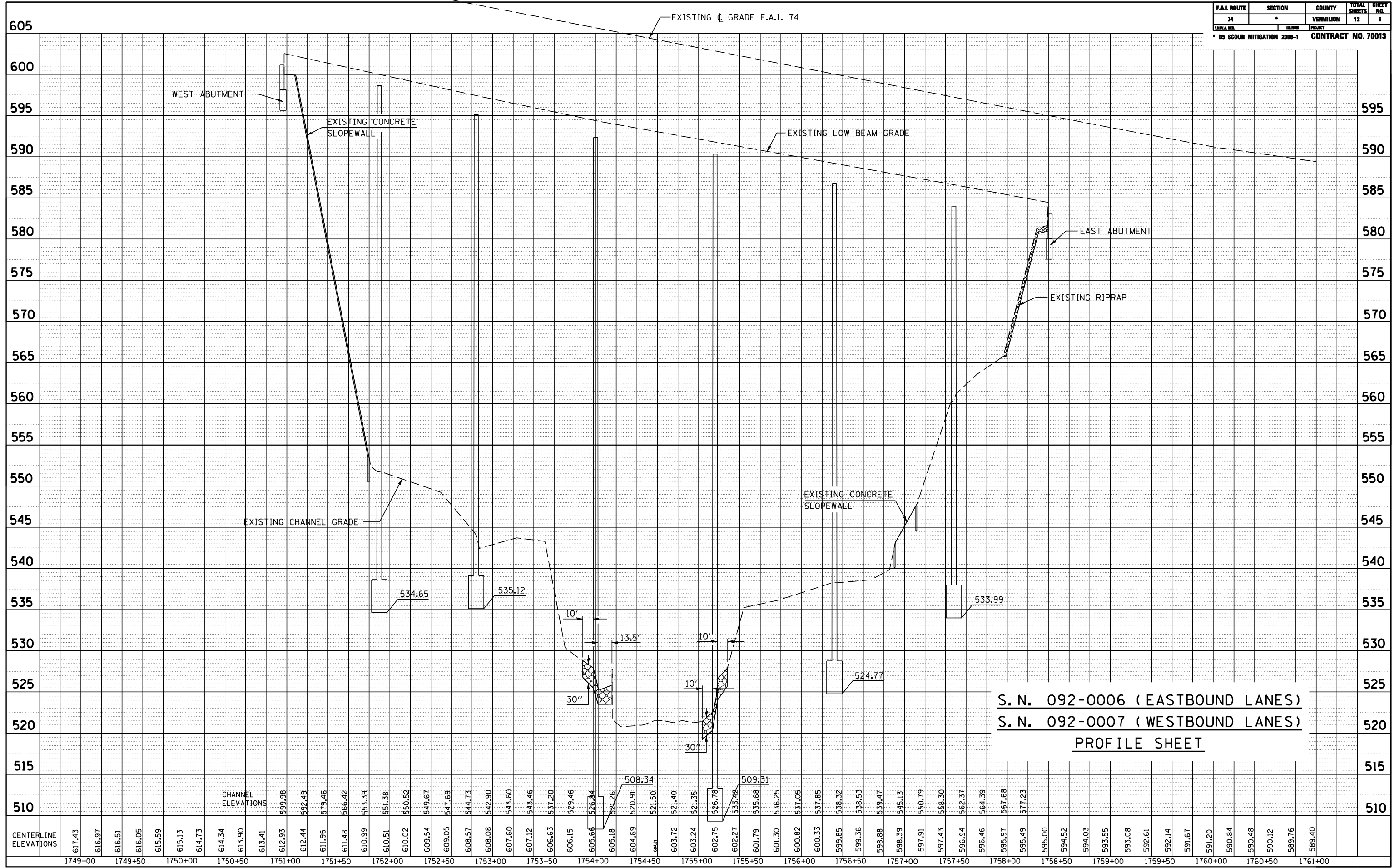
ILLINOIS DEPARTMENT OF TRANSPORTATION
PLANS SHEETS
S.N. 092-0006 & S.N. 092-0007
 F.A.I. ROUTE 74
 SECTION D5 SCOUR MITIGATION 2008-1
 VERMILION COUNTY

SCALE: N/A
 DATE: 02-07-08
 DRAWN BY: CADD
 CHECKED BY:

F.A.I. ROUTE	SECTION	COUNTY	TOTAL SHEETS	SHEET NO.
74		VERMILION	12	6
PROJECT		CONTRACT NO. 70013		
* DS SCOUR MITIGATION 2008-1				

DATE	BY
DATE	BY

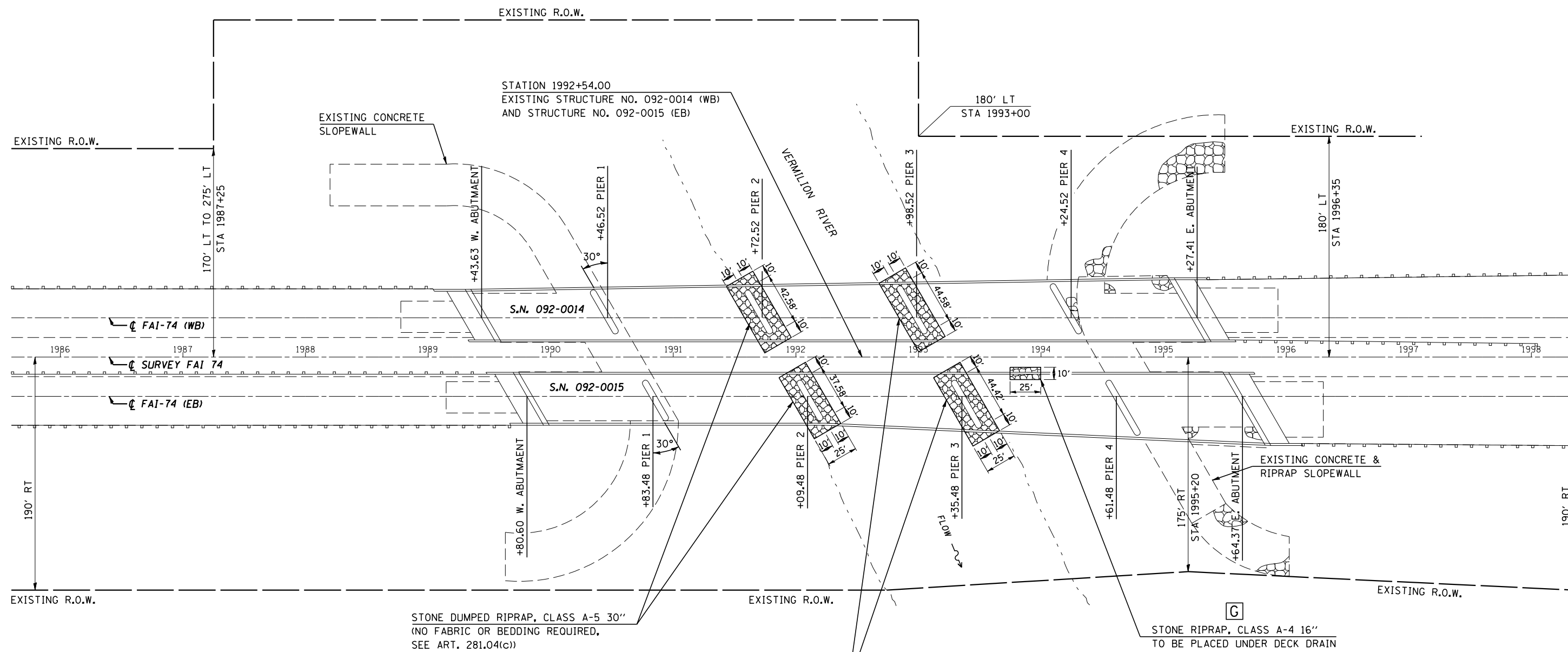
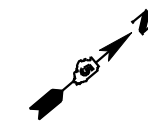
DATE	BY
DATE	BY



S. N. 092-0006 (EASTBOUND LANES)
 S. N. 092-0007 (WESTBOUND LANES)
 PROFILE SHEET

F.A.I. ROUTE	SECTION	COUNTY	TOTAL SHEETS	SHEET NO.
74		VERMILION	12	7
PROJECT		CONTRACT NO. 70013		

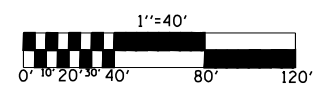
S. N. 092-0014 (WESTBOUND LANES)
S. N. 092-0015 (EASTBOUND LANES)



SCOUR REPAIR SCHEDULE

LOCATION	FABRIC AREA(SY)	REPAIR AREA(SY)	TYPE OF REPAIR	RIPRAP THICKNESS(IN)	BEDDING THICKNESS(IN)	RIPRAP ESTIMATED TONS
PIER #2 (S)	0.0	153.0	A-5	30	0	195.0
PIER #2 (N)	0.0	153.0	A-5	30	0	195.0
G	28.0	28.0	A-4	16	6	19.0
PIER #3 (S)	0.0	156.5	A-5	30	0	200.0
PIER #3 (N)	0.0	156.5	A-5	30	0	200.0

NOTE:
 UNDER NO CIRCUMSTANCES
 ARE THE BRIDGE PIER
 FOOTINGS TO BE UNCOVERED.



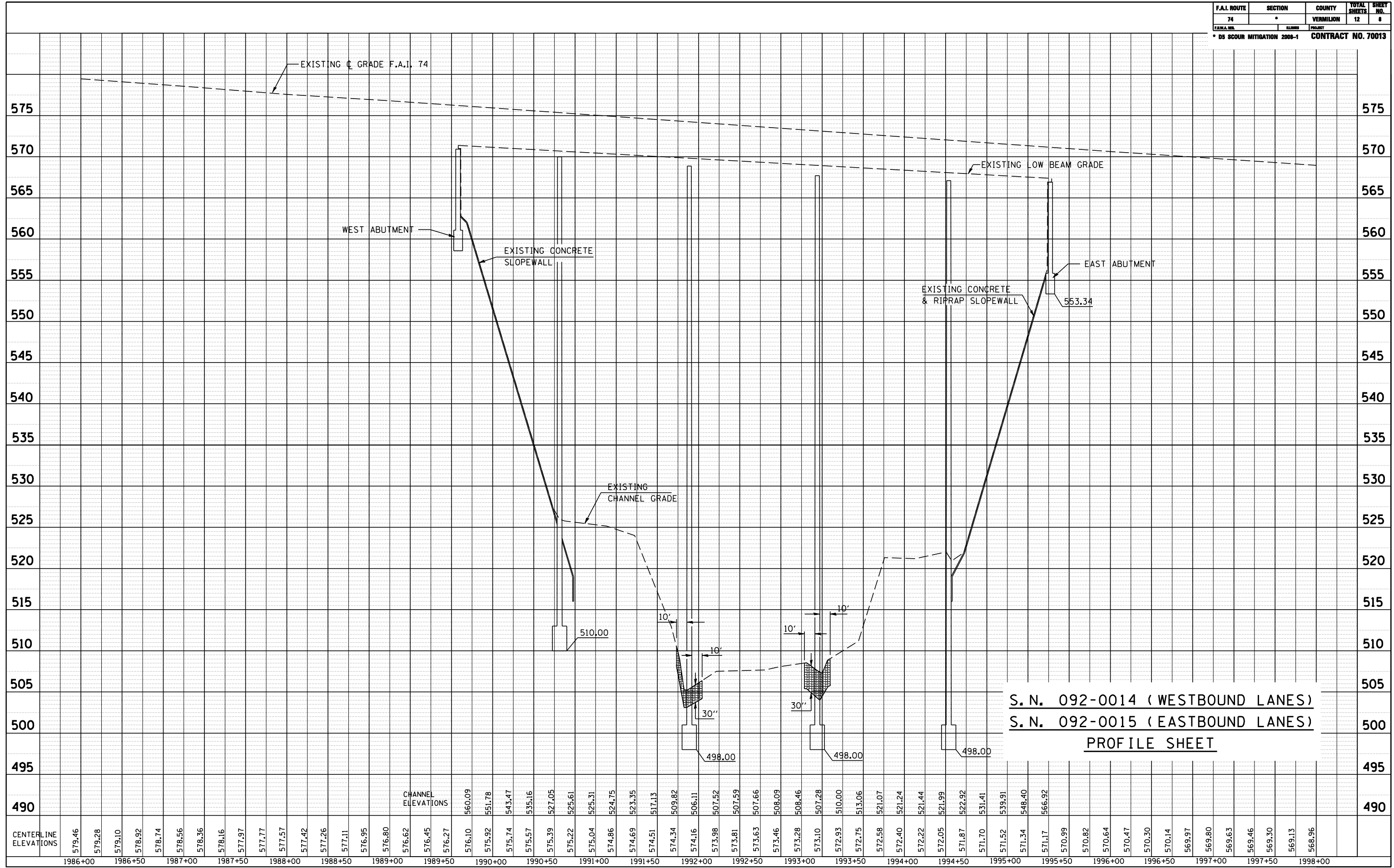
ILLINOIS DEPARTMENT OF TRANSPORTATION
PLAN SHEET
S.N. 092-0014 & S.N. 092-0015
 F.A.I. ROUTE 74
 SECTION D5 SCOUR MITIGATION 2008-1
 VERMILION COUNTY

SCALE: N/A
 DATE: 02-07-08
 DRAWN BY: CADD
 CHECKED BY:

F.A.I. ROUTE	SECTION	COUNTY	TOTAL SHEETS	SHEET NO.
74		VERMILION	12	8
F.A.I. NO.		ILLINOIS	PROJECT	
		* DS SCOUR MITIGATION 2008-1 CONTRACT NO. 70013		

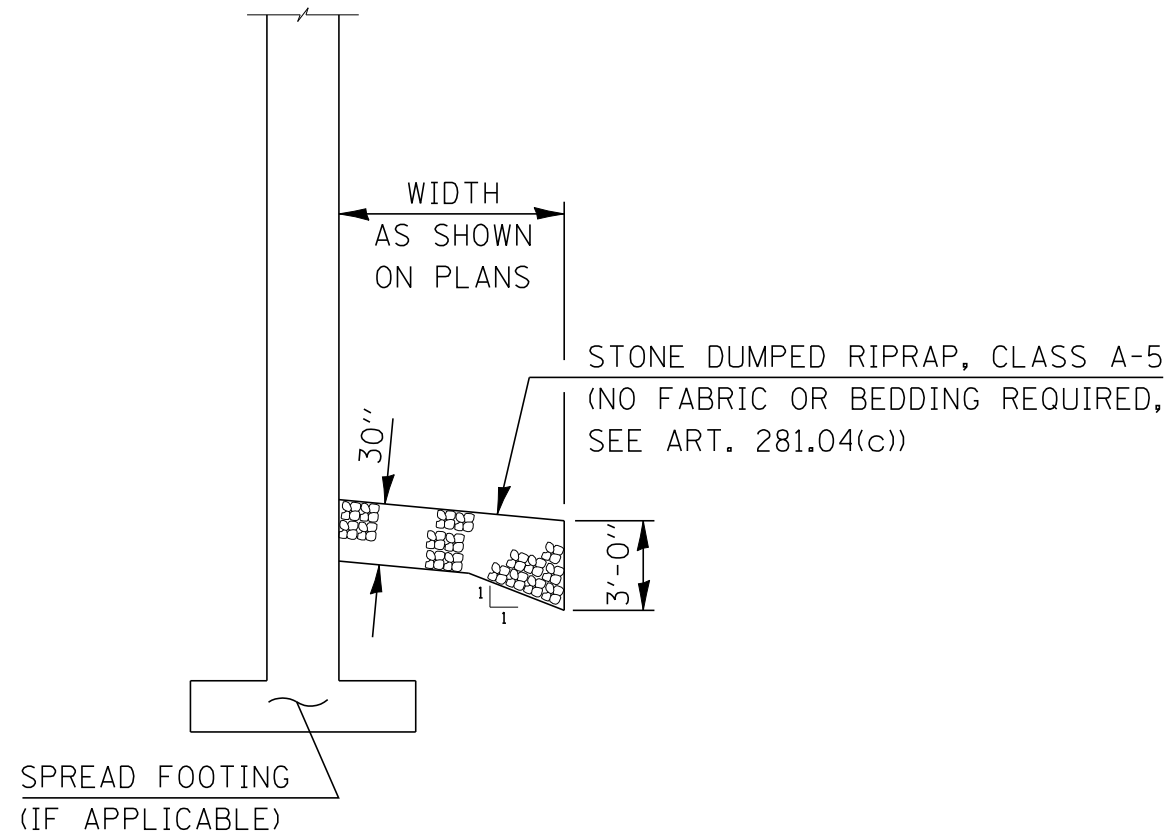
DATE	BY
PROFILER SURVEYED	DATE
NOTE BOOK	BY
NO.	DATE

DATE	BY
PROFILER SURVEYED	DATE
NOTE BOOK	BY
NO.	DATE



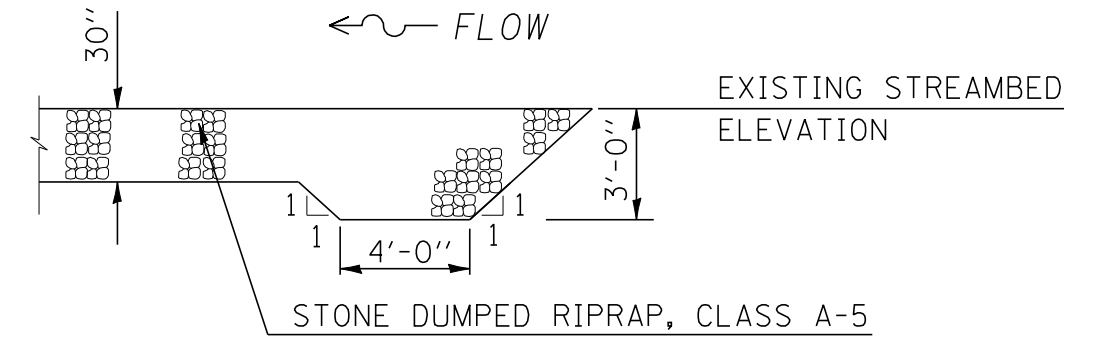
F.A.I. ROUTE	SECTION	COUNTY	TOTAL SHEETS	SHEET NO.
74		VERMILION	12	9
F.A.I. ROUTE		ILLINOIS	PROJECT	
* D5 SCOUR MITIGATION 2008-1		CONTRACT NO. 70013		

TYPICAL DETAIL FOR RIPRAP AT ABUTMENT OR PIER



NOTE:
UNDER NO CIRCUMSTANCES ARE THE BRIDGE PIER FOOTINGS TO BE UNCOVERED.

TYPICAL DETAIL FOR UPSTREAM EDGE OF RIPRAP



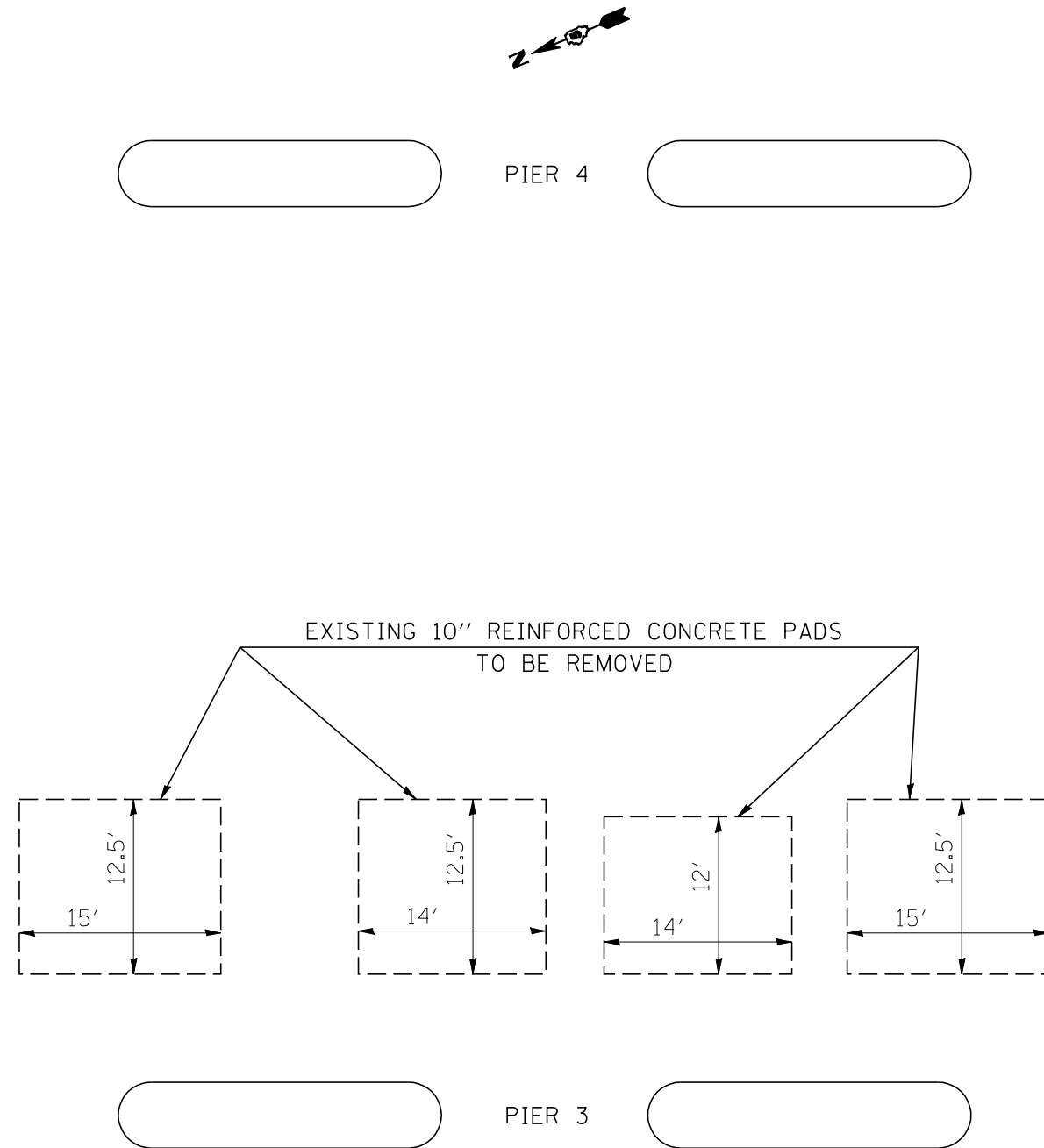
ILLINOIS DEPARTMENT OF TRANSPORTATION
DETAILS
F.A.I. ROUTE 74
SECTION D5 SCOUR MITIGATION 2008-1
VERMILION COUNTY

SCALE: N/A
DATE: 02-07-08

DRAWN BY: CADD
CHECKED BY:

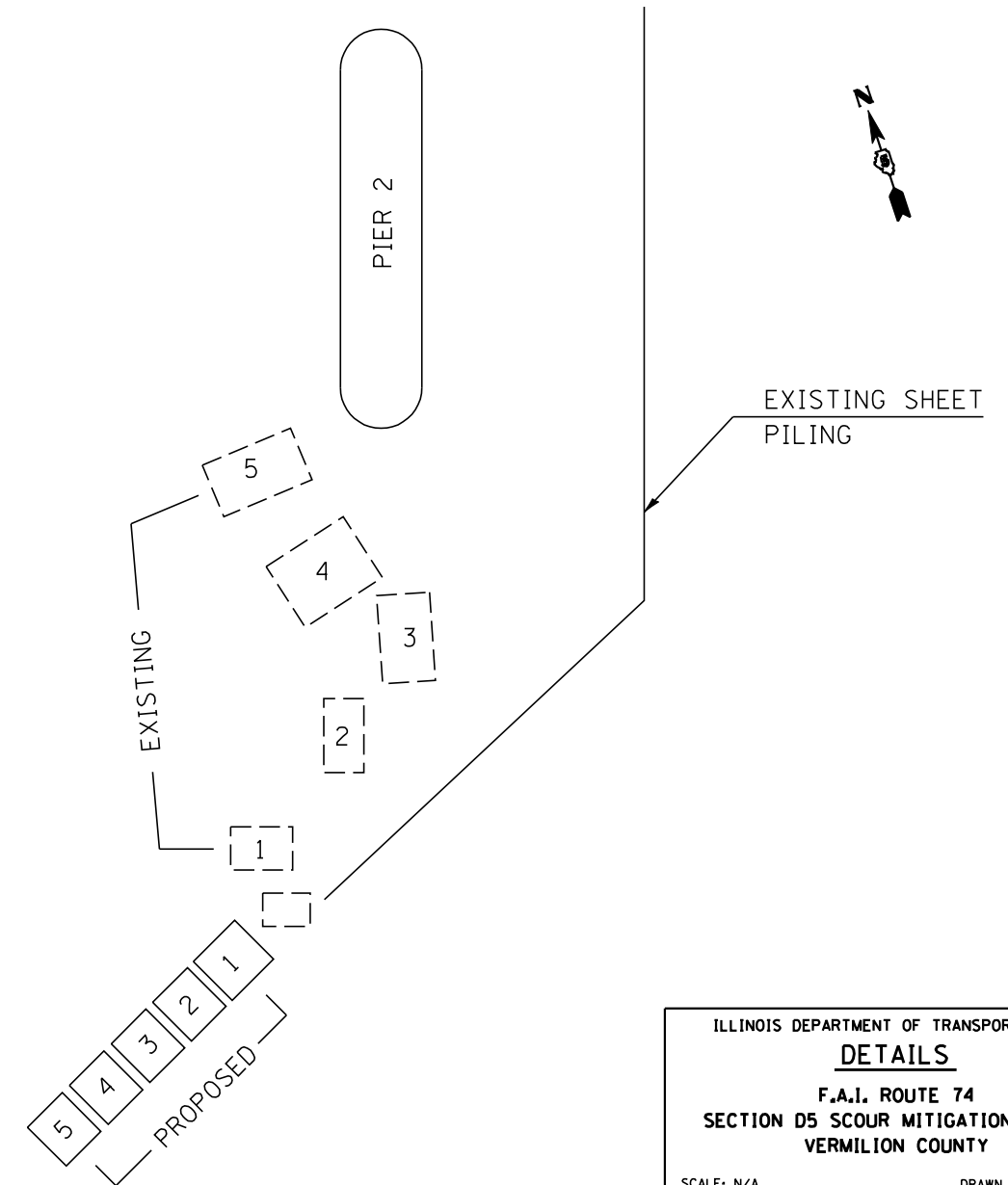
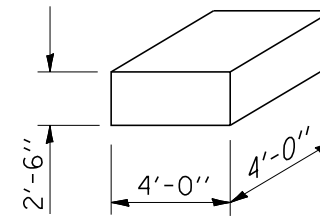
F.A.I. ROUTE	SECTION	COUNTY	TOTAL SHEETS	SHEET NO.
74		VERMILION	12	10
F.A.I. NO.		ILLINOIS	PROJECT	
* D5 SCOUR MITIGATION 2008-1		CONTRACT NO. 70013		

**DETAIL FOR CONCRETE REMOVAL (SPECIAL)
BETWEEN PIER 3 & PIER 4
S.N. 092-0006 & S.N. 092-0007**



**DETAIL FOR REMOVE AND SALVAGE
EROSION CONTROL BLOCK
PIER 2 S.N. 092-0006**

EXISTING DIMENSIONS

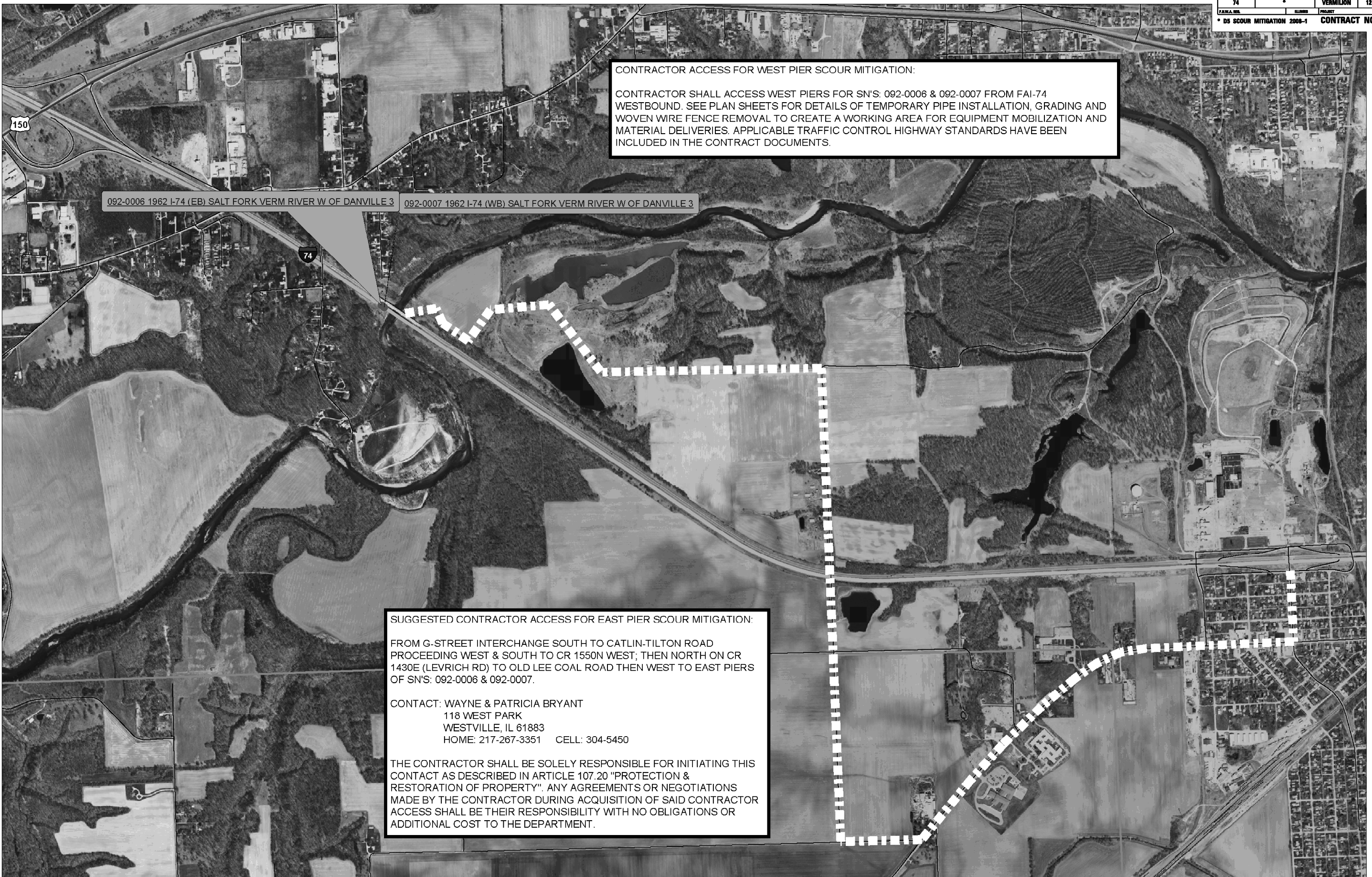


ILLINOIS DEPARTMENT OF TRANSPORTATION
DETAILS
F.A.I. ROUTE 74
SECTION D5 SCOUR MITIGATION 2008-1
VERMILION COUNTY

SCALE: N/A
DATE: 02-07-08

DRAWN BY: CADD
CHECKED BY:

F.A.I. ROUTE	SECTION	COUNTY	TOTAL SHEETS	SHEET NO.
74		VERMILION	12	11
F.A.I. NO.		ILLINOIS	PROJECT	
092-0006 1962 I-74 (EB) SALT FORK VERM RIVER W OF DANVILLE 3		CONTRACT NO. 70013		



CONTRACTOR ACCESS FOR WEST PIER SCOUR MITIGATION:

CONTRACTOR SHALL ACCESS WEST PIERS FOR SN'S: 092-0006 & 092-0007 FROM FAI-74 WESTBOUND. SEE PLAN SHEETS FOR DETAILS OF TEMPORARY PIPE INSTALLATION, GRADING AND WOVEN WIRE FENCE REMOVAL TO CREATE A WORKING AREA FOR EQUIPMENT MOBILIZATION AND MATERIAL DELIVERIES. APPLICABLE TRAFFIC CONTROL HIGHWAY STANDARDS HAVE BEEN INCLUDED IN THE CONTRACT DOCUMENTS.

092-0006 1962 I-74 (EB) SALT FORK VERM RIVER W OF DANVILLE 3 092-0007 1962 I-74 (WB) SALT FORK VERM RIVER W OF DANVILLE 3

SUGGESTED CONTRACTOR ACCESS FOR EAST PIER SCOUR MITIGATION:

FROM G-STREET INTERCHANGE SOUTH TO CATLIN-TILTON ROAD PROCEEDING WEST & SOUTH TO CR 1550N WEST; THEN NORTH ON CR 1430E (LEVRICH RD) TO OLD LEE COAL ROAD THEN WEST TO EAST PIERS OF SN'S: 092-0006 & 092-0007.

CONTACT: WAYNE & PATRICIA BRYANT
 118 WEST PARK
 WESTVILLE, IL 61883
 HOME: 217-267-3351 CELL: 304-5450

THE CONTRACTOR SHALL BE SOLELY RESPONSIBLE FOR INITIATING THIS CONTACT AS DESCRIBED IN ARTICLE 107.20 "PROTECTION & RESTORATION OF PROPERTY". ANY AGREEMENTS OR NEGOTIATIONS MADE BY THE CONTRACTOR DURING ACQUISITION OF SAID CONTRACTOR ACCESS SHALL BE THEIR RESPONSIBILITY WITH NO OBLIGATIONS OR ADDITIONAL COST TO THE DEPARTMENT.

