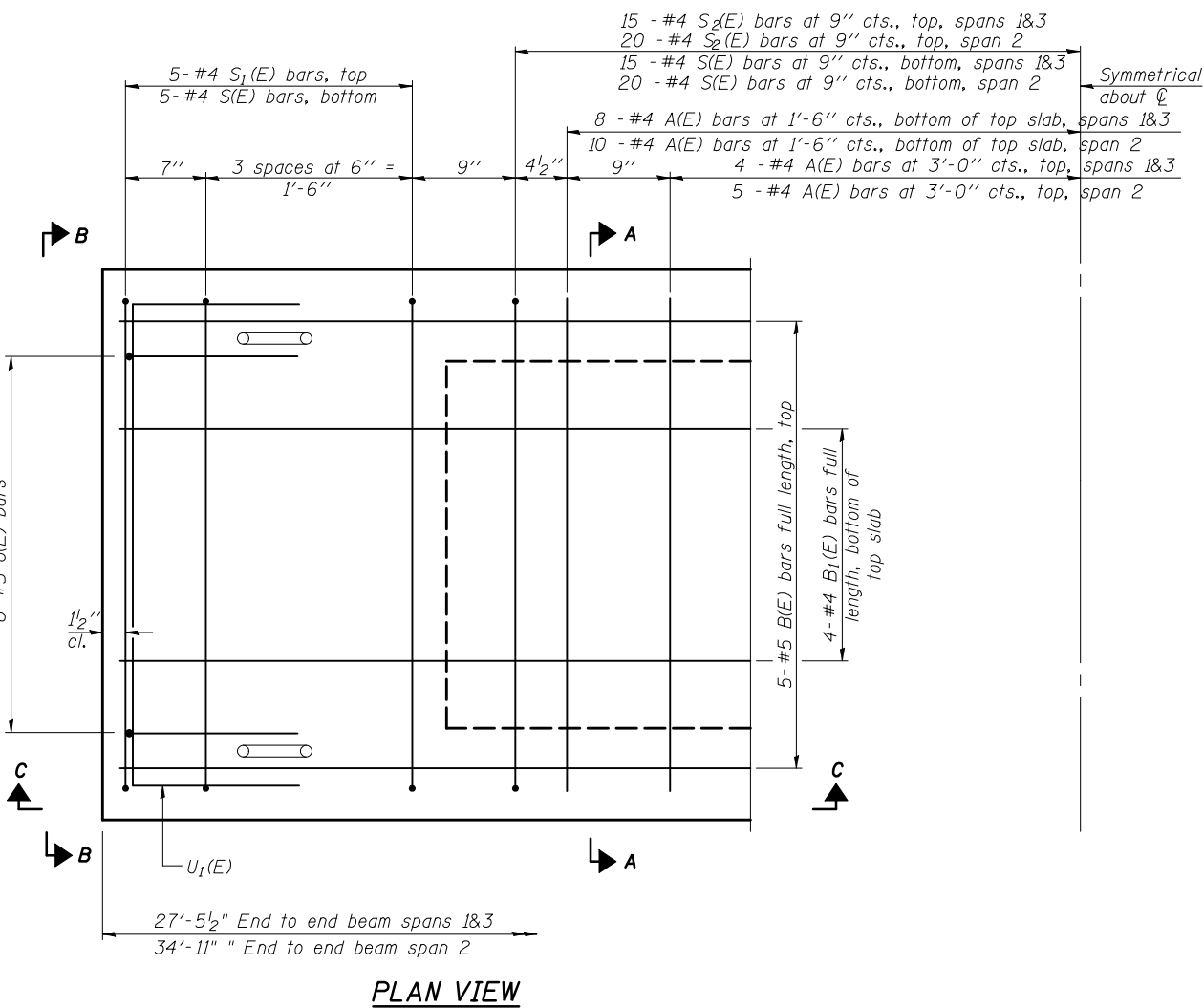
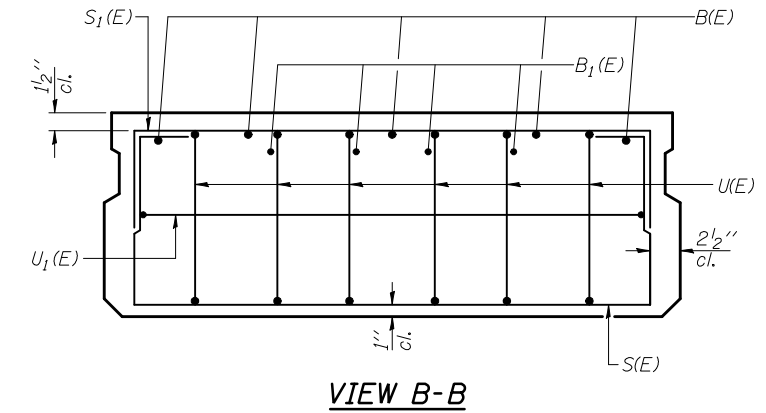
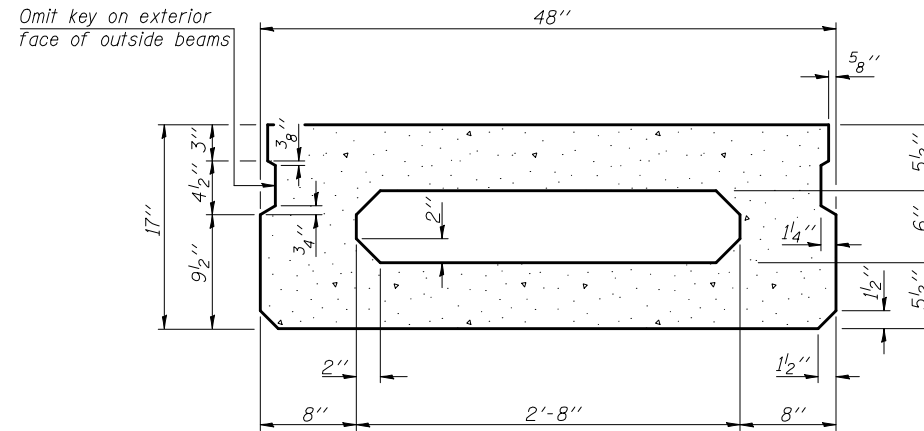
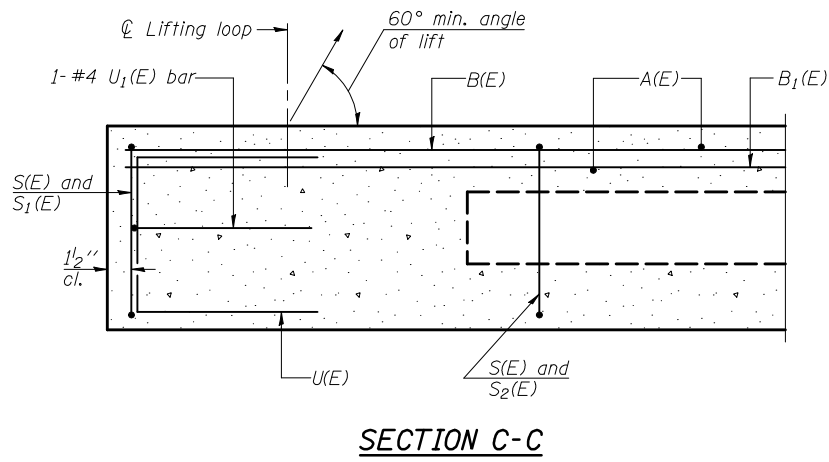


STATE OF ILLINOIS
DEPARTMENT OF TRANSPORTATION

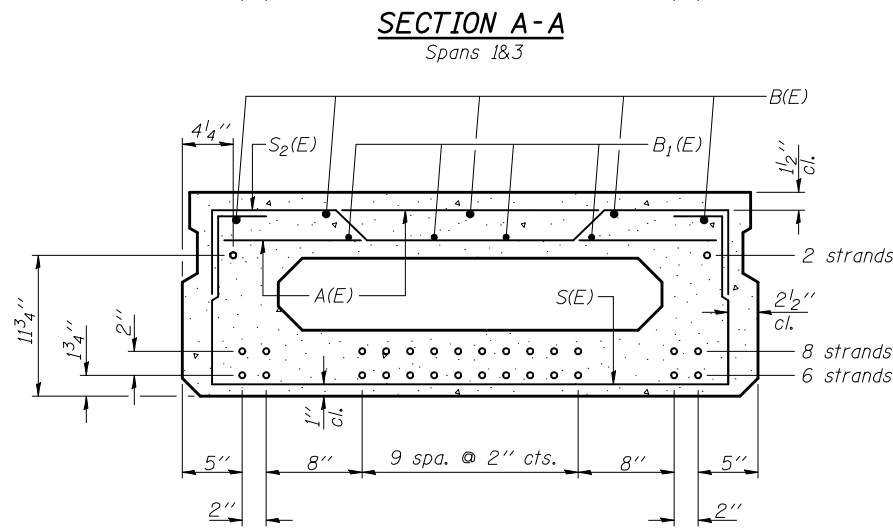
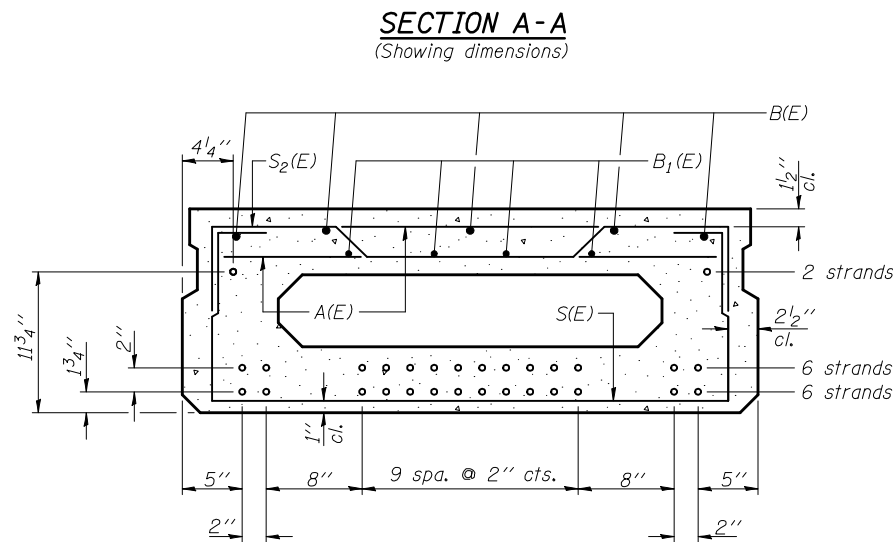
ROUTE NO.	SECTION	COUNTY	TOTAL SHEETS	SHEET NO.	SHEET NO. 3
F.A.S. 502	(86BR)BR	CHAMPAIGN	30	13	8 SHEETS
FED. ROAD DIST. NO. 7	ILLINOIS	FED. AID PROJECT-			

Contract # 70426



Note: Spacing of S(E) and S2(E) bars may be adjusted up to 4" in the immediate area of the transverse tie diaphragms to miss the block outs for the transverse ties.

DESIGNED	FGE
CHECKED	JAR
DRAWN	KAS
CHECKED	AJS



(Showing reinforcement and permissible strand locations)

Note: Place the number of strands specified in each row symmetrically about the centerline of beam in the permissible strand locations shown.

BAR LIST
ONE BEAM ONLY

Spans 1&3
(For information only)

Bar	No.	Size	Length	Shape
A(E)	24	#4	3'-7"	—
B(E)	5	#5	27'-2"	—
B1(E)	4	#4	27'-2"	—
S(E)	40	#4	6'-9"	□
S1(E)	10	#4	5'-11"	□
S2(E)	30	#4	6'-2"	□
U(E)	12	#5	3'-8"	□
U1(E)	2	#4	6'-0"	□

Note: See sheet 4 of 8 for additional details and Bill of Material.

BAR LIST
ONE BEAM ONLY

Span 2
(For information only)

Bar	No.	Size	Length	Shape
A(E)	30	#4	3'-7"	—
B(E)	5	#5	34'-8"	—
B1(E)	4	#4	34'-8"	—
S(E)	50	#4	6'-9"	□
S1(E)	10	#4	5'-11"	□
S2(E)	40	#4	6'-2"	□
U(E)	12	#5	3'-8"	□
U1(E)	2	#4	6'-0"	□

Note: See sheet 4 of 8 for additional details and Bill of Material.

SUPERSTRUCTURE DETAILS 1
LEVERETT ROAD OVER THE SALINE BRANCH
CHAMPAIGN COUNTY
F.A.S. ROUTE 502 - SEC. (86BR) BR
STATION 71+38.50
S.N. 010-0237

STRAND ASSOCIATES, INC.