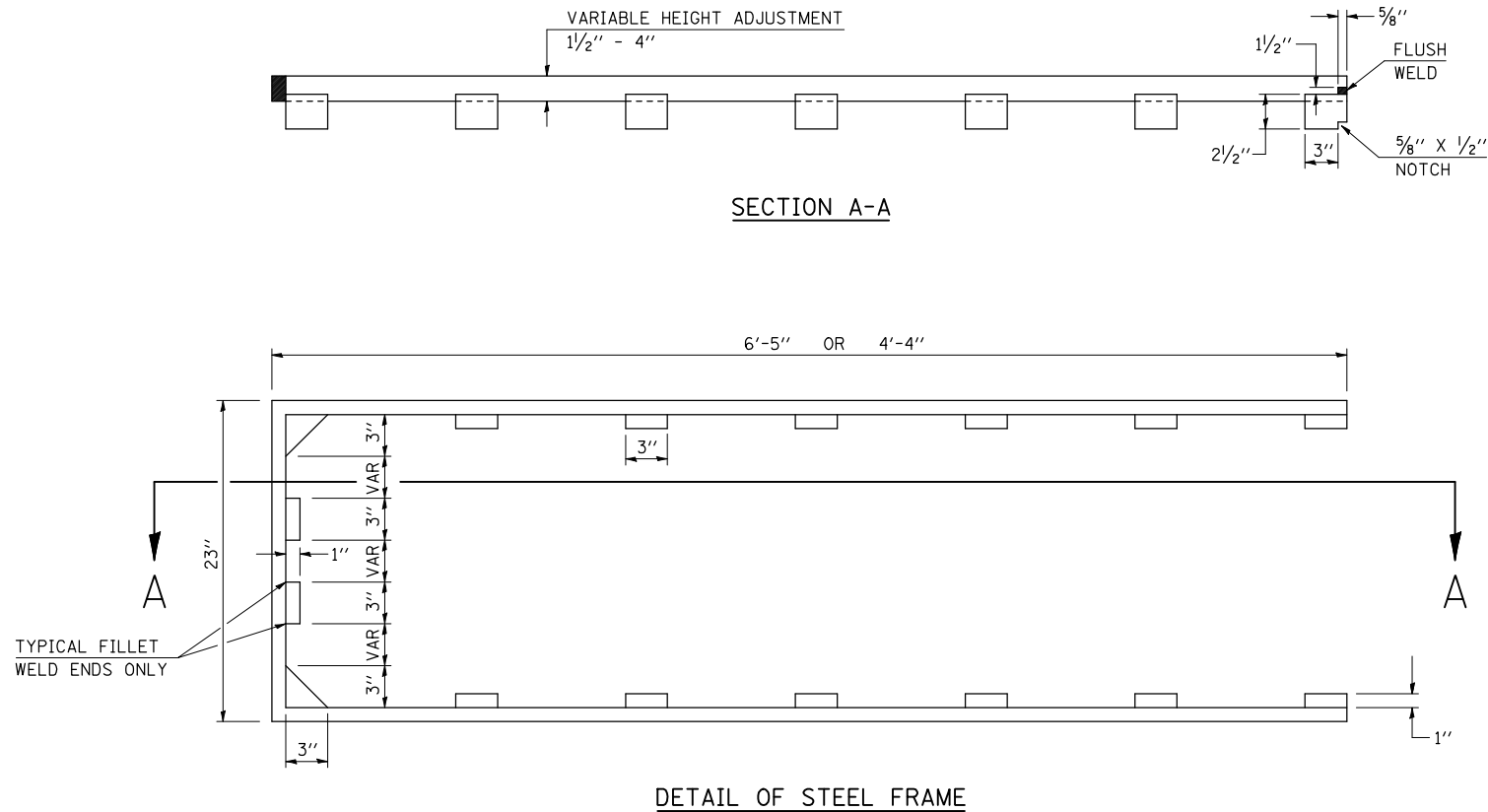
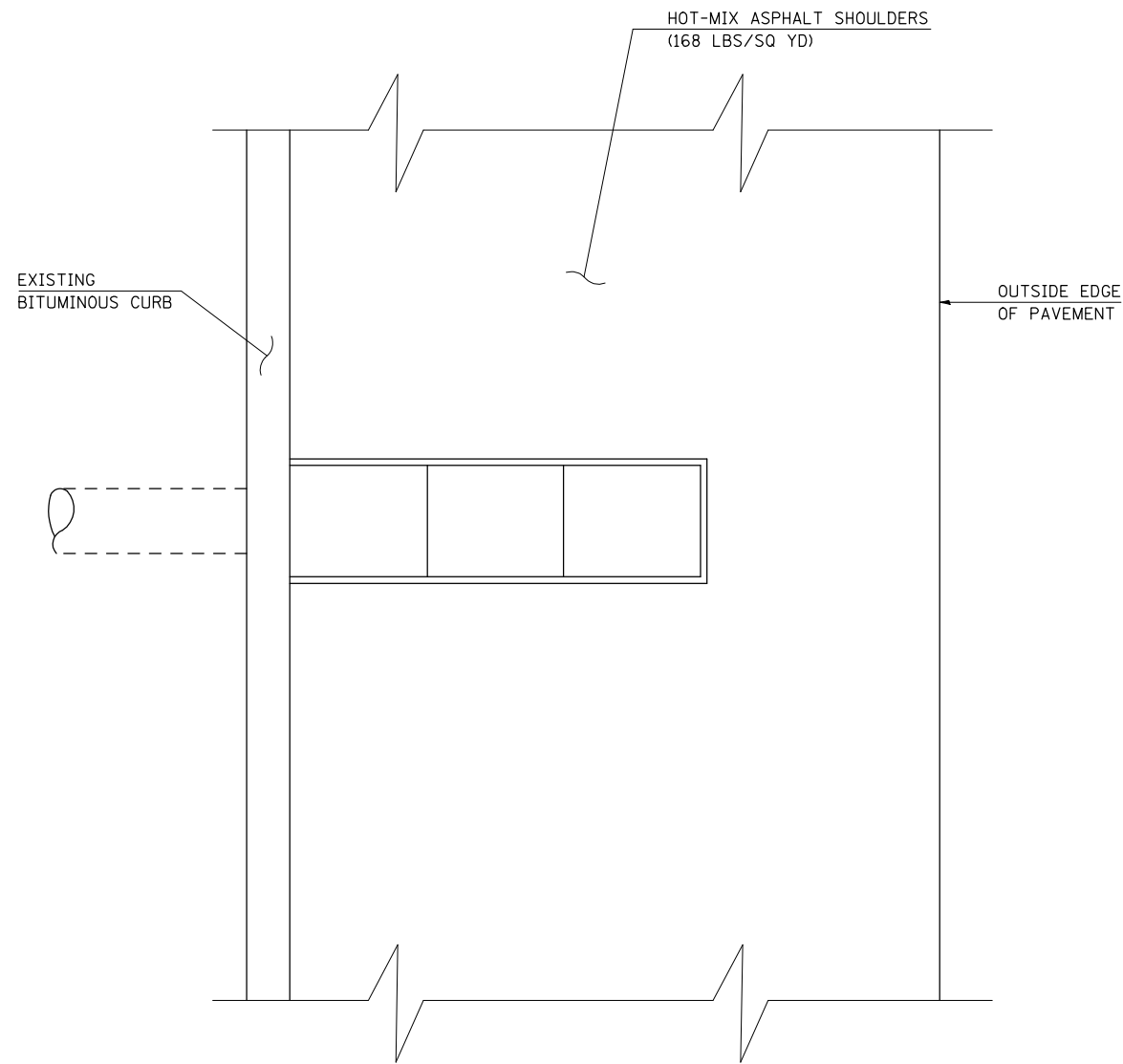


F.A.I. RTE.	SECTION	COUNTY	TOTAL SHEETS	SHEET NO.
74	(20-1)RS-2	DEWITT	97	63

# DETAIL FOR INLET ADJUST (SPECIAL)

(SEE SCHEDULE OF QUANTITIES FOR LOCATIONS)



### GENERAL NOTES

1. HEIGHT ADJUSTMENTS ARE TO BE MEASURED IN THE FIELD.
2. FABRICATION WELDS ARE TO BE PLACED SO AS NOT TO INTERFERE WITH RING SEATING ON FRAME OR GRATE.
3. MILD STEEL MAY BE USED TO FABRICATE ADJUSTMENT RING.
4. THIS WORK SHALL BE PERFORMED BEFORE THE HMA SHOULDERS ARE PLACED TO INSURE PROPER ADJUSTMENT.
5. THIS WORK SHALL BE MEASURED FOR PAYMENT PER EACH INDIVIDUAL ADJUSTMENT AND PAID FOR AT THE CONTRACT UNIT PRICE EACH FOR INLET ADJUST (SPECIAL), WHICH PRICE SHALL INCLUDE ALL EQUIPMENT, MATERIAL, LABOR AND OTHER ITEMS REQUIRED TO MANUFACTURE & INSTALL EACH INDIVIDUAL ADJUSTMENT RING.

NOT TO SCALE

ILLINOIS DEPARTMENT OF TRANSPORTATION  
**DETAIL FOR INLET ADJUST (SPECIAL)**

F.A.I. ROUTE 74  
 SECTION (20-1)RS-2  
 DEWITT COUNTY

SCALE: NONE  
 DATE: 01-03-07

DRAWN BY: CADD  
 CHECKED BY: