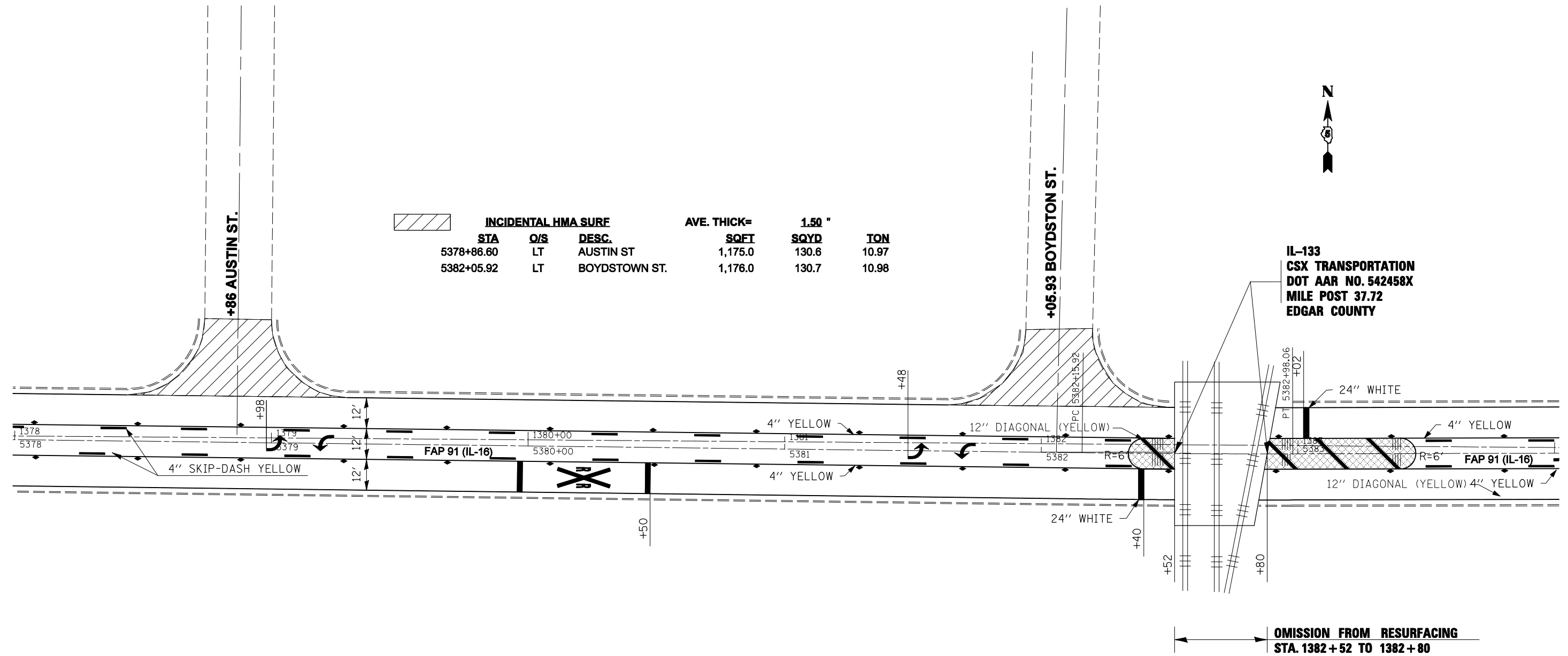


SEC. 2, T 13 N, R 12 W, 2ND PM



INCIDENTAL HMA SURF			AVE. THICK= 1.50 "		
STA	O/S	DESC.	SQFT	SQYD	TON
5378+86.60	LT	AUSTIN ST	1,175.0	130.6	10.97
5382+05.92	LT	BOYDSTOWN ST.	1,176.0	130.7	10.98

IL-133
 CSX TRANSPORTATION
 DOT AAR NO. 542458X
 MILE POST 37.72
 EDGAR COUNTY

OMISSION FROM RESURFACING
 STA. 1382+52 TO 1382+80

MEDIAN REMOVAL (SPECIAL)		STA.	to	STA.
RR WEST		5382+33		5282+51
RR EAST		5382+88		5383+46

SEC. 11, T 13 N, R 12 W, 2ND PM

FILE NAME =	USER NAME = sheehyom	DESIGNED -	REVISED -	STATE OF ILLINOIS DEPARTMENT OF TRANSPORTATION	PLAN SHEET PAVING COLD MILLING IL-133 TO LOWER-T IN PARIS	F.A.P. RTE.	SECTION	COUNTY	TOTAL SHEETS	SHEET NO.	
ct:\projects\d500807 (v8)\70638str\paving.dgn		DRAWN -	REVISED -			91	• 1 RS-4 & 101 RS-6	EDGAR	35	19	
	PLOT SCALE = 40.0000' / IN.	CHECKED -	REVISED -			CONTRACT NO. 70638					
	PLOT DATE = 3/26/2008	DATE -	REVISED -			FED. ROAD DIST. NO. ILLINOIS FED. AID PROJECT					
				SCALE:	SHEET NO. OF SHEETS	STA.	TO STA.				