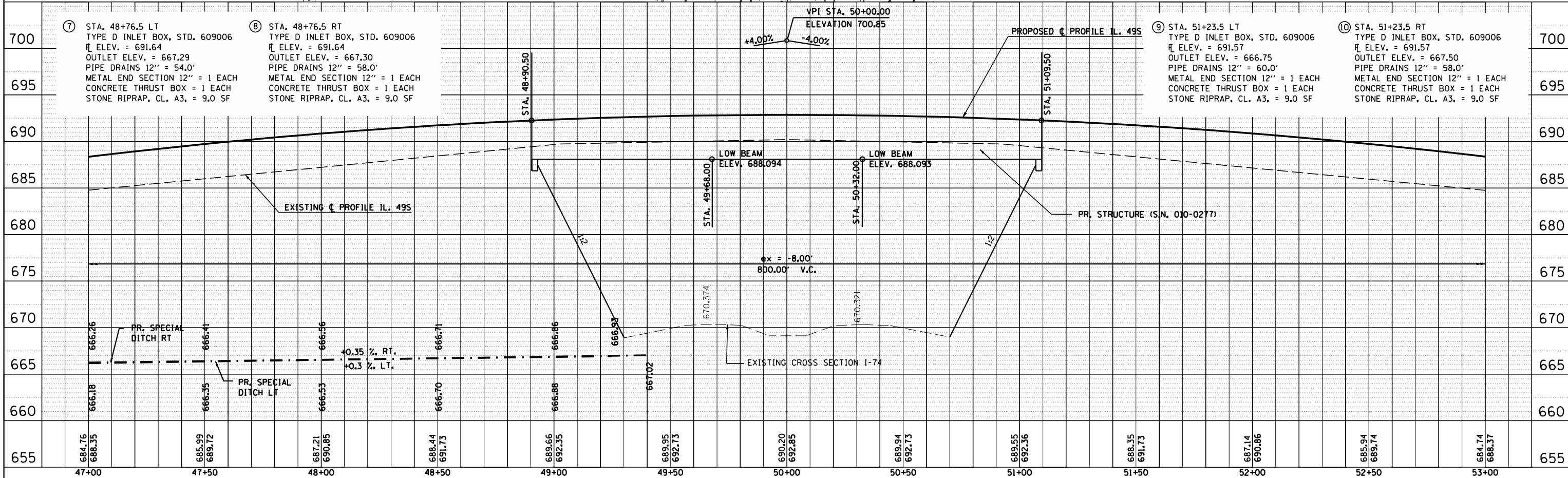
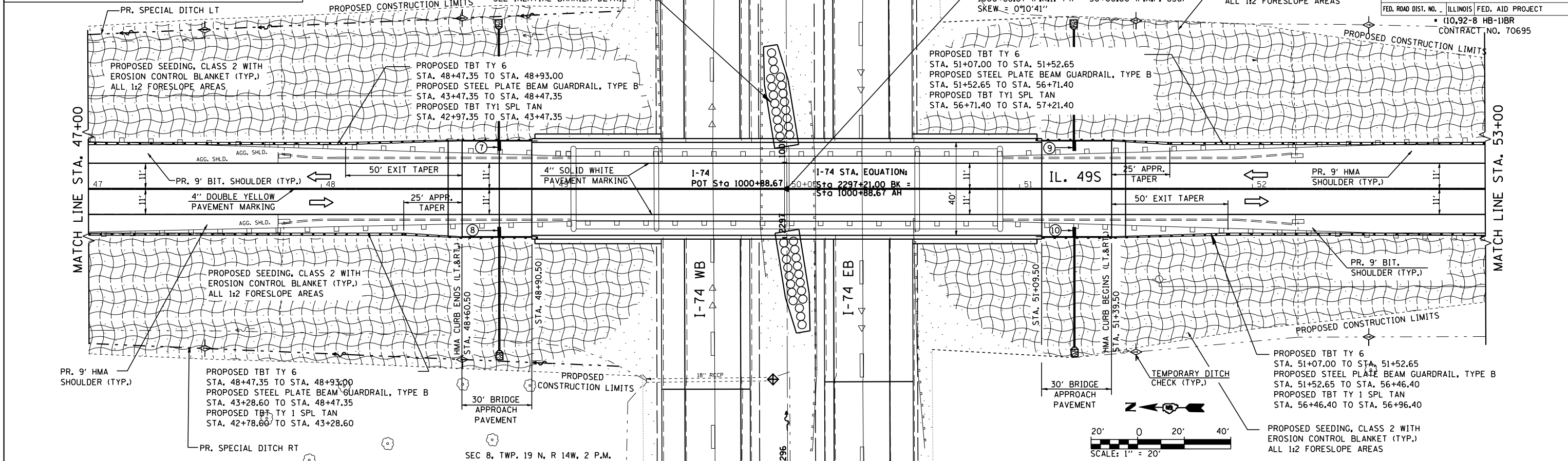


B.M. #1 CHISELED "□" ON E. FOUNDATION OF SIGN FOR WB I-74 ON W. SIDE OF IL 49 S & N. OF NW RAMP STA. 307+62.594, 33.25' RT, ELEV 667.975

SEC 9, TWP. 19 N, R 14W, 2 P.M.

F.A.I. RTE.	SECTION	COUNTY	TOTAL SHEETS	SHEET NO.
74		CHAMPAIGN	93	29
STA. 47+00		TO STA. 53+00		
ILLINOIS FED. AID PROJECT				
FED. ROAD DIST. NO. (10,92-8 HB-1)BR CONTRACT NO. 70695				



IL 49S STA. 47+00 TO STA. 53+00

PLAN	DATE
BY	
CHECKED	
NO. OF WAY CHECKED	
CADD FILE NAME	

PROFILE	DATE
BY	
CHECKED	
NO. OF WAY CHECKED	
STRUCTURE NOTATIONS CHKD	