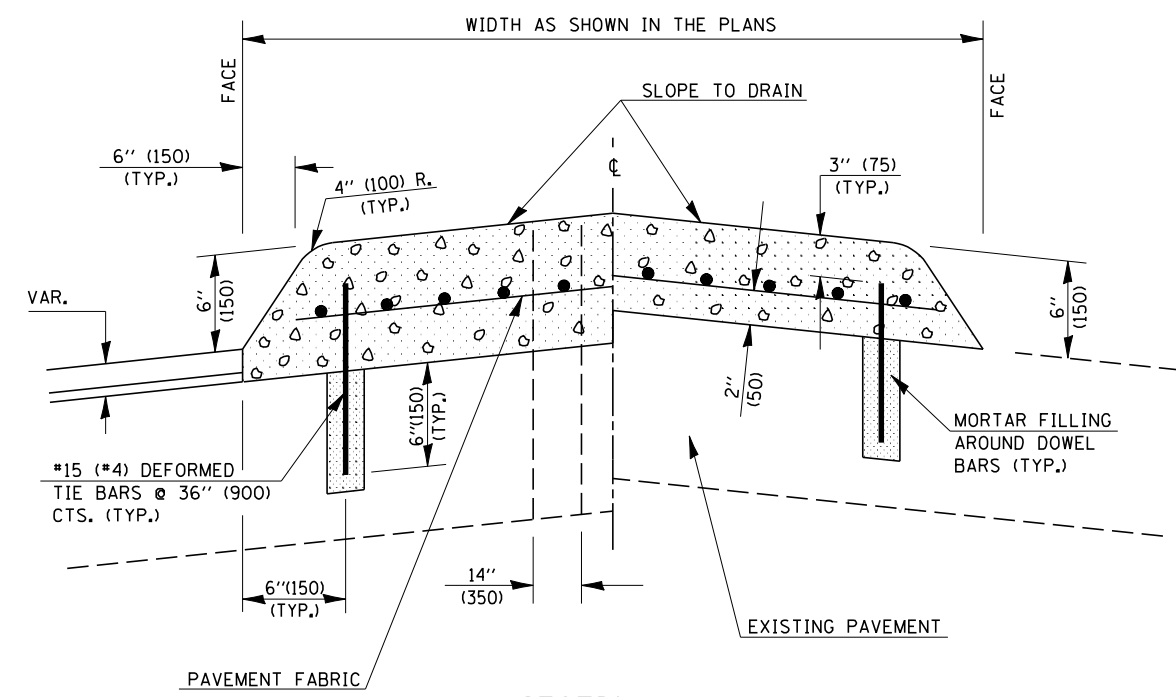


F.A.I. RTE.	SECTION	COUNTY	TOTAL SHEETS	SHEET NO.
74	.	CHAMPAIGN	93	78
STA.		TO STA.		
FED. ROAD DIST. NO.	ILLINOIS FED. AID PROJECT			
	(10,92-8 HB-1)BR			

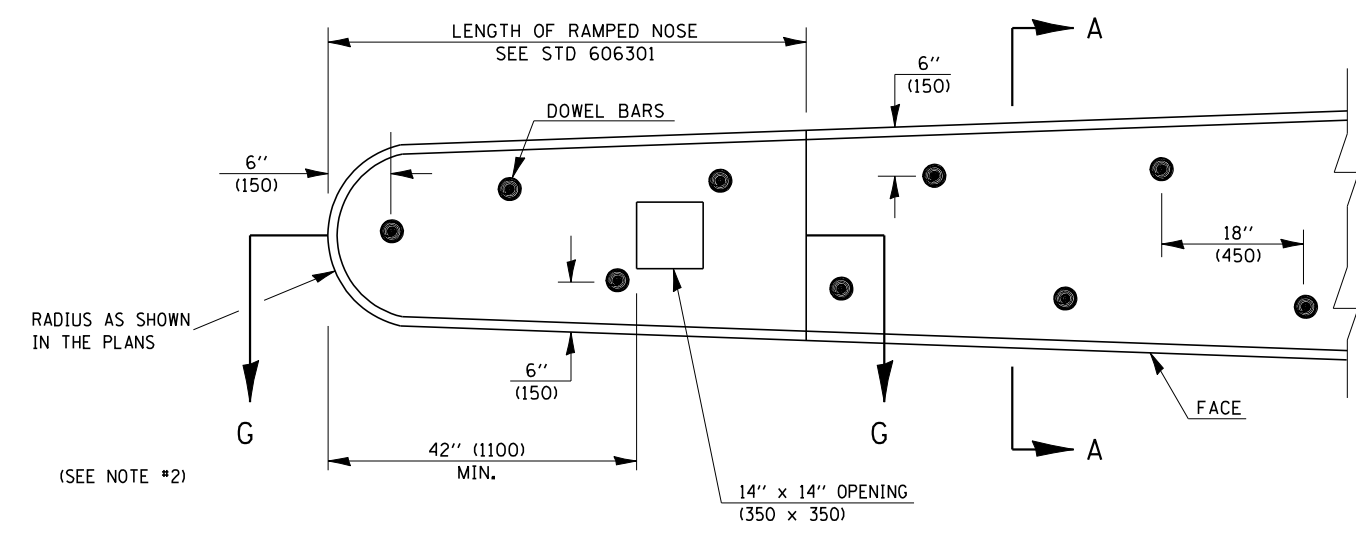
CONTRACT NO. 70695

### GENERAL NOTES

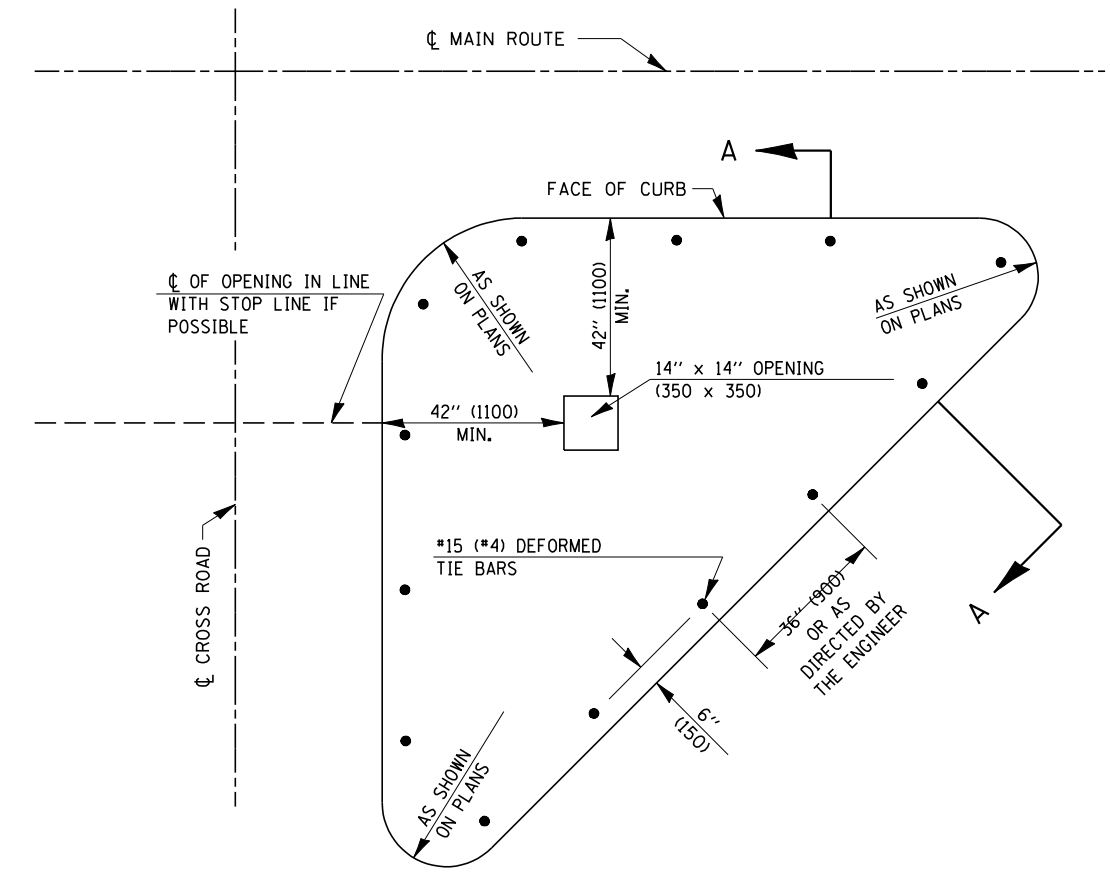
1. THE GENERAL NOTES FOR STANDARD 606301 SHALL APPLY.
2. DOWEL BARS @ 36" (900) CTS. OR AS DIRECTED BY THE ENGINEER.
3. THIS WORK WILL BE PAID FOR AT THE CONTRACT UNIT PRICE PER 50 FOOT (m ) FOR CONCRETE MEDIAN, TYPE SM-6 (SM-15) (DOWELED), INCLUDING THE COST OF FURNISHING AND INSTALLING THE DOWEL BARS, MORTAR FILLING, PAVEMENT FABRIC AND THE REMOVAL AND DISPOSAL OF THE EXISTING PAVEMENT FOR THE 14" x 14" (350 x 350) OPENING, IF REQUIRED, AND NO ADDITIONAL COMPENSATION WILL BE ALLOWED.



SECTION A-A



PLAN OF MEDIAN



PLAN OF CORNER ISLAND

Note: All dimensions are in INCHES (millimeters) unless otherwise shown.

DATE	REVISIONS	NAME
11/06	REPLACED DETAIL A-5.07	TJB

ILLINOIS DEPARTMENT OF TRANSPORTATION  
**CONCRETE MEDIAN,  
 TYPE SM-6 (SM-15)  
 (DOWELED)**  
**DISTRICT 5 DETAIL NO. 60622354**

PLOT DATE = 12/19/2007  
 FILE NAME = c:\projects\4501099\structure 010-0097\detail2007.dgn  
 PLOT SCALE = 42,352 x 1 IN.  
 USER NAME = collierb