

STATE OF ILLINOIS
DEPARTMENT OF TRANSPORTATION
DIVISION OF HIGHWAYS

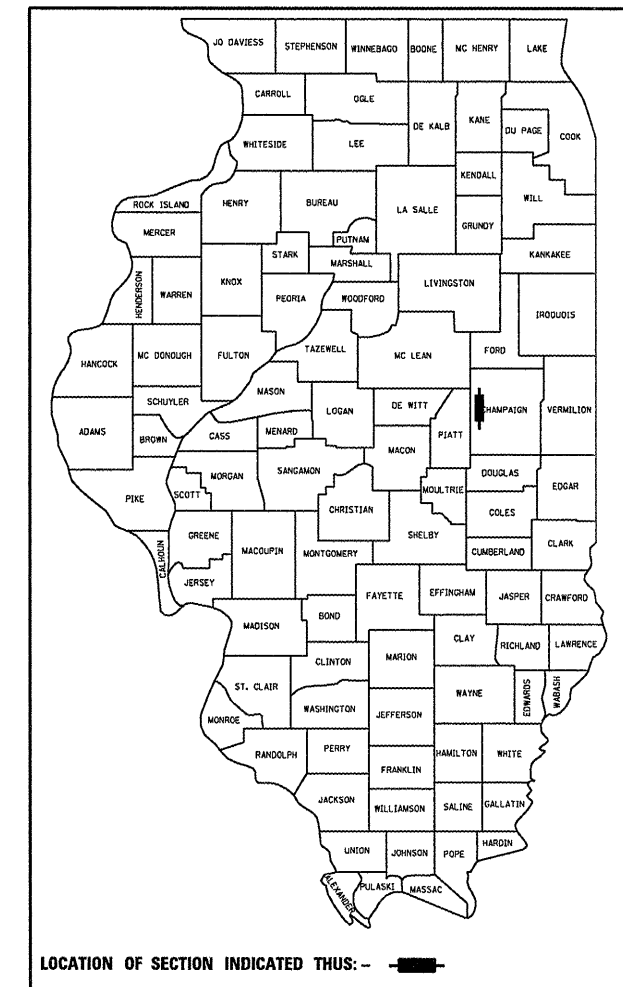
PROPOSED HIGHWAY PLANS

F.A.P. ROUTE 326 (IL 47)
SECTION 2008 BEAM BRACING (SN 010-0055)
CHAMPAIGN COUNTY
C-95-007-08
BEAM BRACING
SANGAMON RIVER SW OF MAHOMET

F.A.P. RTE.	SECTION	COUNTY	TOTAL SHEETS	SHEET NO.
326		CHAMPAIGN	5	1
FED. ROAD DIST. NO.	ILLINOIS	CONTRACT NO. 70720		

* 2008 BEAM BRACING (SN 010-0055)

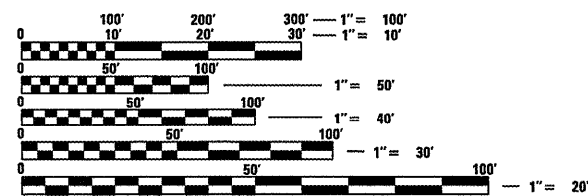
D-95-007-08



FOR INDEX OF SHEETS, SEE SHEET NO. 2
FOR SUMMARY OF QUANTITIES, SEE SHEET NO. 3

CURRENT ADT
5,000 (2007)

DESIGN DESIGNATION
N/A

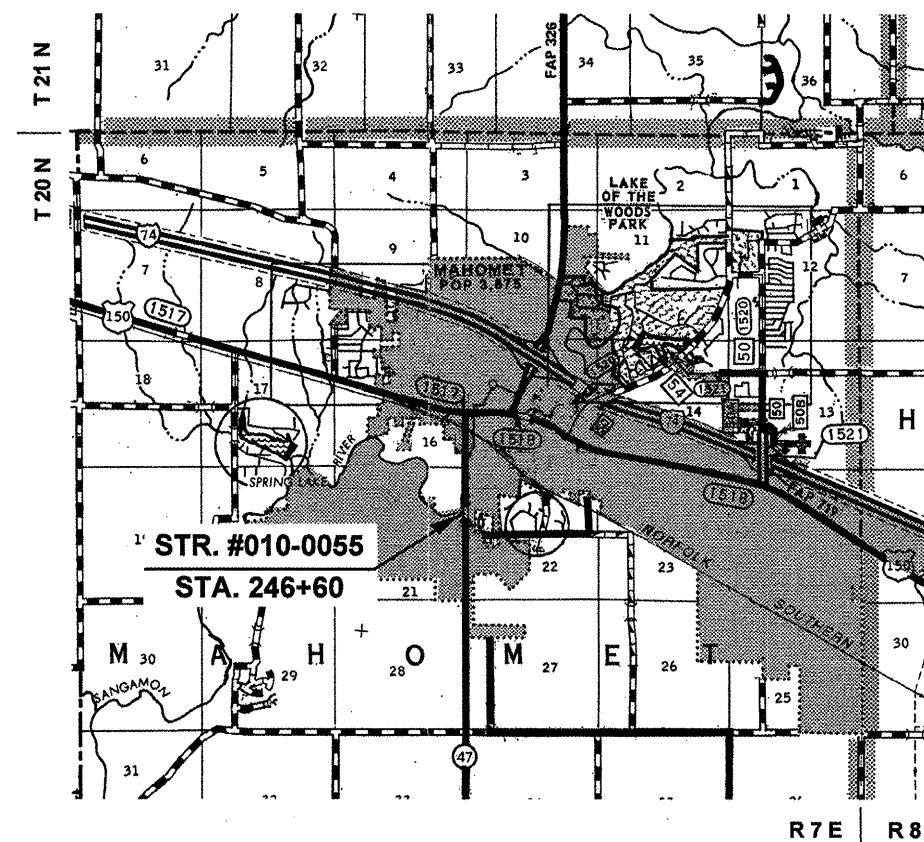


FULL SIZE PLANS HAVE BEEN PREPARED USING STANDARD ENGINEERING SCALES. REDUCED SIZED PLANS WILL NOT CONFORM TO STANDARD SCALES. IN MAKING MEASUREMENTS ON REDUCED PLANS, THE ABOVE SCALES MAY BE USED.

J.U.L.I.E.
JOINT UTILITY LOCATION INFORMATION FOR EXCAVATION
1-800-892-0123
OR 811

PROJECT ENGINEER: NANCY FASIG (217)465-4181
SQUAD LEADER: CORY SHEEHY (217)465-4181

CONTRACT NO. 70720



R 7 E | R 8 E

TOTAL LENGTH OF SECTION & PROJECT = 361.7 FEET = 0.069 MILES
NET LENGTH OF SECTION & PROJECT = 361.7 FEET = 0.069 MILES

STATE OF ILLINOIS
DEPARTMENT OF TRANSPORTATION
DIVISION OF HIGHWAYS

SUBMITTED 3/16 20 08
Joseph E. Rowles
DEPUTY DIRECTOR OF HIGHWAYS, REGION 3 ENGINEER

May 9, 20 08
Eric Estern
INTERIM ENGINEER OF DESIGN AND ENVIRONMENT

May 9, 20 08
Christine M. Reed
DIRECTOR OF HIGHWAYS, CHIEF ENGINEER

**PRINTED BY THE AUTHORITY
OF THE STATE OF ILLINOIS**

INDEX OF SHEETS

<u>SHEET NO.</u>	<u>ITEM</u>
1	COVER SHEET
2	INDEX OF SHEETS, GENERAL NOTES, HIGHWAY STANDARDS
3	SUMMARY OF QUANTITIES
4-5	STRUCTURE PLANS

LIST OF STANDARDS

<u>STANDARD NO.</u>	<u>DESCRIPTION</u>
000001-05	STANDARD SYMBOLS, ABBREVIATIONS AND PATTERNS
001006	DECIMAL OF AN INCH AND OF A FOOT
701001-01	OFF-ROAD OPERATIONS, 2L, 2W, MORE THAN 4.5 M (15') AWAY
701006-02	OFF-ROAD OPERATIONS, 2L, 2W, 4.5 M (15') TO 600 MM (24") FROM PAVEMENT EDGE
701201-02	LANE CLOSURE, 2L, 2W, DAY ONLY, FOR SPEEDS >= 45 MPH
701901	TRAFFIC CONTROL DEVICES

GENERAL NOTES

G. N. -100
 ENGLISH UNITS OF MEASUREMENT SHALL GOVERN OVER AND SUPERSEDE ANY METRIC UNITS SHOWN IN THIS CONTRACT. WHERE INCLUDED, METRIC UNITS ARE FOR INFORMATION ONLY.

G. N. -105.09A
 ALL ELEVATIONS SHOWN IN THE PLANS ARE BASED ON NORTH AMERICAN VERTICAL DATUM OF 1988. (NAVD 88)

FILE NAME = c:\projects\4570720\70720_text.dgn	USER NAME = sheehygn	DESIGNED - CRG	REVISED -	STATE OF ILLINOIS DEPARTMENT OF TRANSPORTATION	INDEX OF SHEETS, LIST OF STANDARDS & GENERAL NOTES	F.A.P. RTE.	SECTION	COUNTY	TOTAL SHEETS	SHEET NO.	
PLOT SCALE = 40.0000' / IN.	DRAWN - BBP	CHECKED - CRG	REVISED -			326	•	CHAMPAIGN	5	2	
PLOT DATE = 3/26/2008	DATE - 10/18/07	CHECKED - CRG	REVISED -			2008 BEAM BRACING (SN 010-0055) CONTRACT NO. 70720					
						FED. ROAD DIST. NO. [ILLINOIS] FED. AID PROJECT					

SUMMARY OF QUANTITIES

LOCATION OF WORK: FAP 326(IL-47)
 BRIDGE
 SN 010-0055
 FUNDING BREAKOUT: STATE 100%
 CONSTRUCTION TYPE CODE: SFTY-2A

<u>CODE NO</u>	<u>ITEM</u>	<u>UNIT</u>	<u>TOTAL QUANTITY</u>
50500405	FURNISHING AND ERECTING STRUCTURAL STEEL	POUND	45,550.0
67100100	MOBILIZATION	L SUM	1.0
70100450	TRAFFIC CONTROL AND PROTECTION, STANDARD 701201	L SUM	1.0

FILE NAME = c:\projects\10570720\70720_text.dgn	USER NAME = sheehycm	DESIGNED - CRG	REVISED -	STATE OF ILLINOIS DEPARTMENT OF TRANSPORTATION	SUMMARY OF QUANTITIES	F.A.P. RTE. 326	SECTION •	COUNTY CHAMPAIGN	TOTAL SHEETS 5	SHEET NO. 3
	PLOT SCALE = 40.0000' / IN.	DRAWN - BBP	REVISED -			* 2008 BEAM BRACING (SN 010-0055)		CONTRACT NO. 70720		
	PLOT DATE = 3/26/2008	CHECKED - CRG	REVISED -		SCALE:	SHEET NO. 3 OF 5 SHEETS	STA.	TO STA.	FED. ROAD DIST. NO. ILLINOIS FED. AID PROJECT	
		DATE - 10/18/07	REVISED -							

STATE OF ILLINOIS
DEPARTMENT OF TRANSPORTATION

ROUTE NO.	SECTION	COUNTY	STATE	SHEET NO.
FAP 326		CHAMPAIGN	5	4
FED. ROAD DIST. NO. 7	ILLINOIS	FED. AID PROJECT		

SHEET NO. 1
2 SHEETS

Contract Number: 70720

** Contractor is to verify beam length prior to ordering material. Other sections meeting the section modulus requirements shown may be allowed subject to approval by the Bureau of Bridges and Structures. Maximum Girder depth = 24". No additional payment will be allowed if the contractor chooses a heavier steel section than the one specified in the plans. (Min Sx = 371 in³)

* \varnothing Transverse tie \varnothing 's (3 per span). Place additional shims at midpoints between tie \varnothing 's. Securely weld shims to top flange of support beam. Minimum shim size is 6" x flange width.

GENERAL NOTES

All structural steel shall conform to AASHTO Classification M-270 Gr. 36, unless otherwise noted.

Plan dimensions and details relative to existing plans are subject to routine variations. The Contractor shall field verify existing dimensions and details affecting new construction and make necessary approved adjustments prior to construction or ordering of materials. Such variations shall not be cause for additional compensation for a change in scope of the work, however, the Contractor will be paid for the quantity actually furnished based upon the unit price bid for the work.

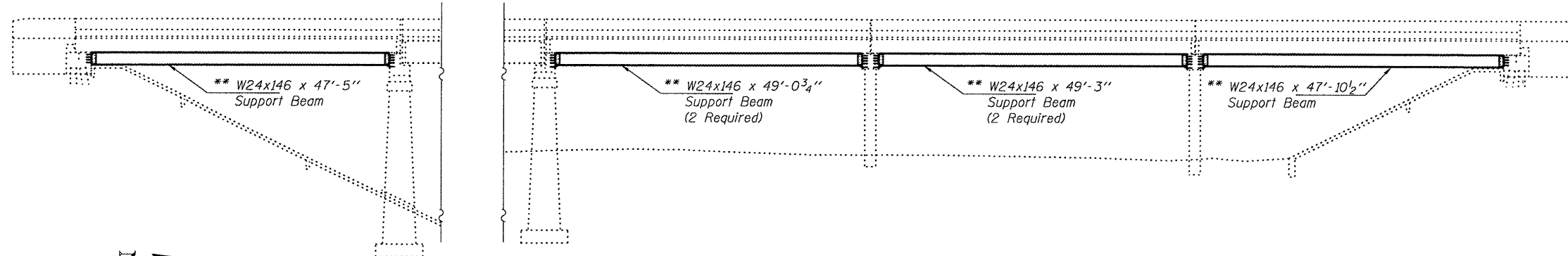
The contractor is advised that the existing PPC Deck Beams are in a deteriorated condition with reduced load carrying capacity. It is the contractor's responsibility to account for the condition of the beams when developing construction procedures.

See Section 584 of the Standard Specifications for Epoxy Grouting of Threaded Rods; Minimum embedment 9".

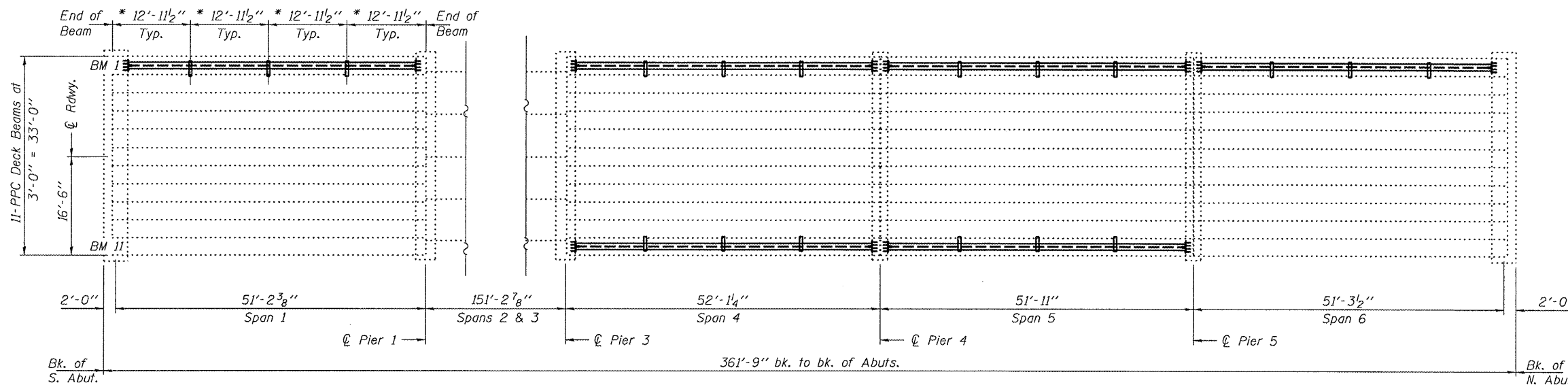
The cost of epoxy grouting threaded rods on the pier cap and beams shall be included with Furnishing and Erecting Structural Steel.

The Contractor has the option of using used steel. See Special Provisions.

If the contractor's procedure for placement of beams involves placement of cranes or other heavy equipment on the bridge, a detailed procedure shall be submitted to the Engineer for approval. The procedure shall include calculations, prepared and sealed by an Illinois Licensed Structural Engineer, verifying that the equipment and procedure used will not overstress the existing beams. To distribute load to multiple beams and protect the existing surface, in all cases a double layer mat of heavy timbers shall be used at all times under crane tracks or wheels and any outriggers in the down position. If necessary, shims shall be used under the crane mat to ensure uniform contact with the underlying beams.



ELEVATION



PLAN

TOTAL BILL OF MATERIAL

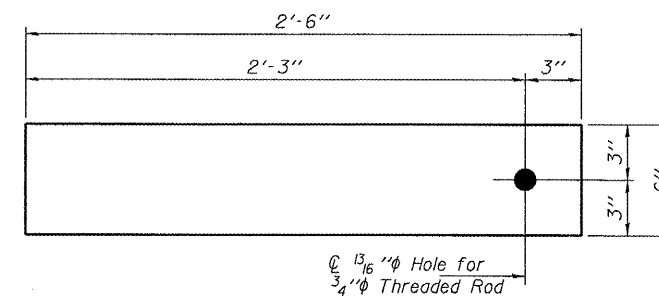
ITEM	UNIT	QUANTITY
Furnishing and Erecting Structural Steel	Pound	45,550

DESIGNED	<i>[Signature]</i>
CHECKED	Victor H. Voliz
DRAWN	Steffen
CHECKED	<i>[Signature]</i>

APRIL 22, 2008	
EXAMINED	<i>[Signature]</i>
PASSED	<i>[Signature]</i>



EXPIRES 11-30-2008



TRANSVERSE TIE R A
 \varnothing 1/2" x 6" x 2'-6"
(18 Required)

PLAN & ELEVATION
FAP RT. 326
CHAMPAIGN COUNTY
SN 010-0055

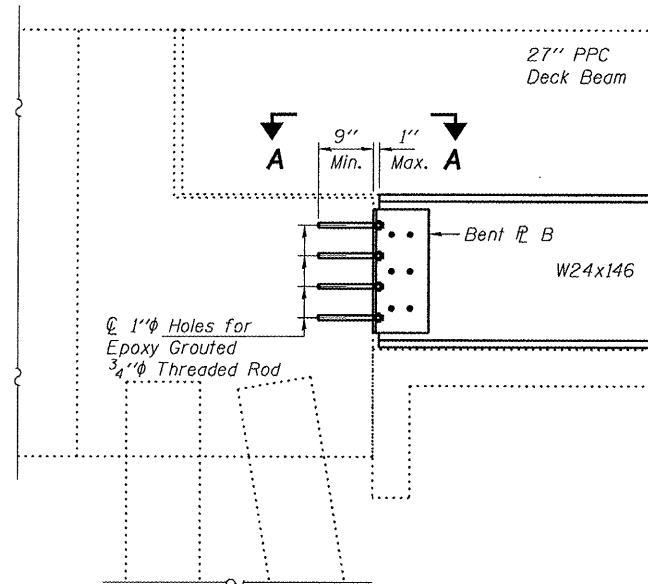
STATE OF ILLINOIS
DEPARTMENT OF TRANSPORTATION

ROUTE NO.	SECTION	COUNTY	TOTAL SHEETS	SHEET NO.
FAP 326		CHAMPAIGN	5	5
FED. ROAD DIST. NO. 7	ILLINOIS	FED. AID PROJECT		

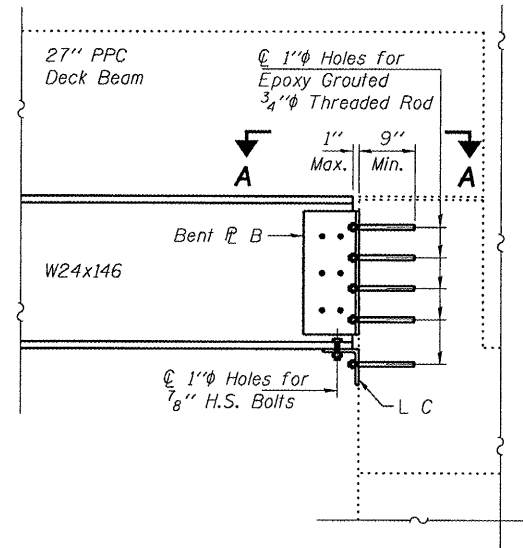
SHEET NO. 2

2 SHEETS

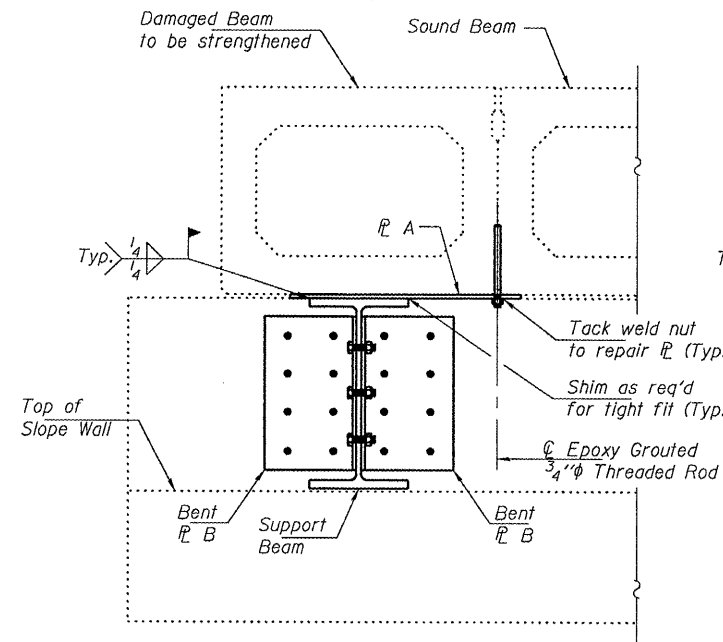
Contract Number: 70720



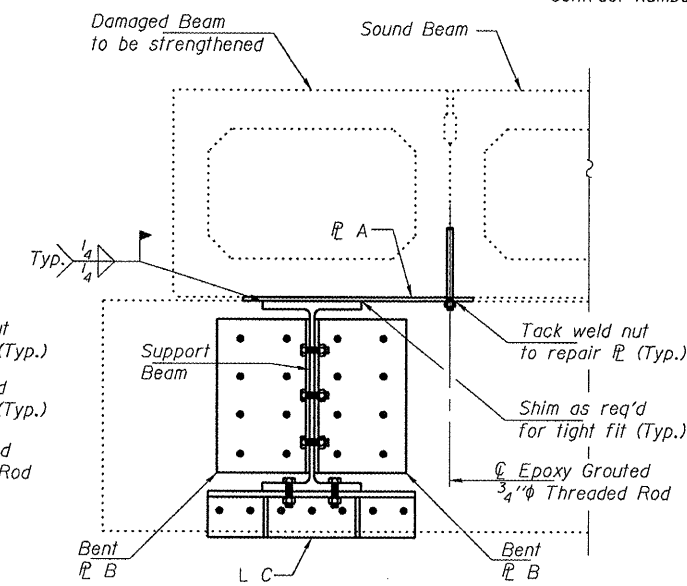
TYPICAL SECTION THRU ABUTMENTS



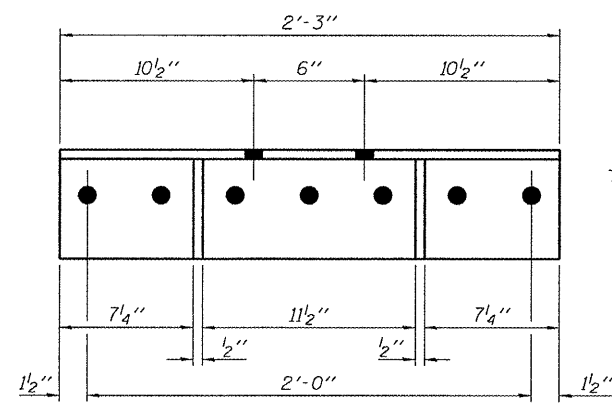
TYPICAL SECTION THRU PIERS



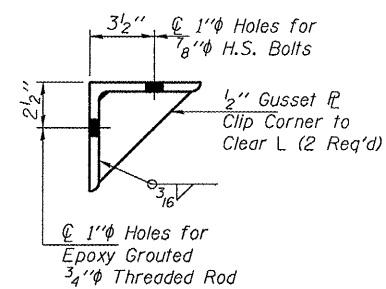
TYPICAL SECTION AT ABUTMENTS



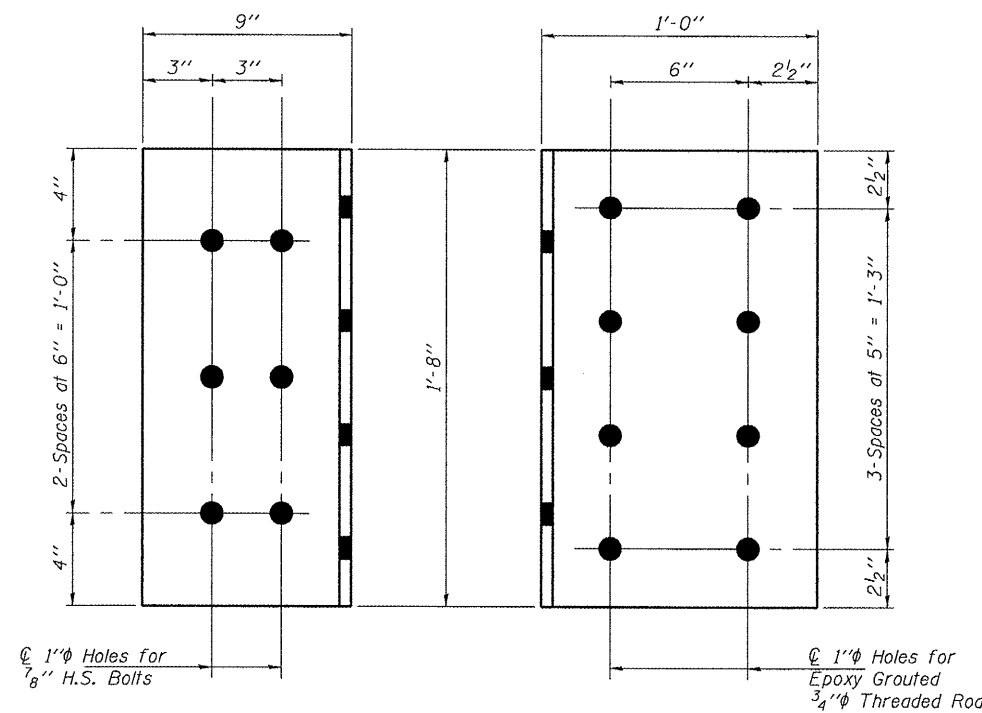
TYPICAL SECTION AT PIERS



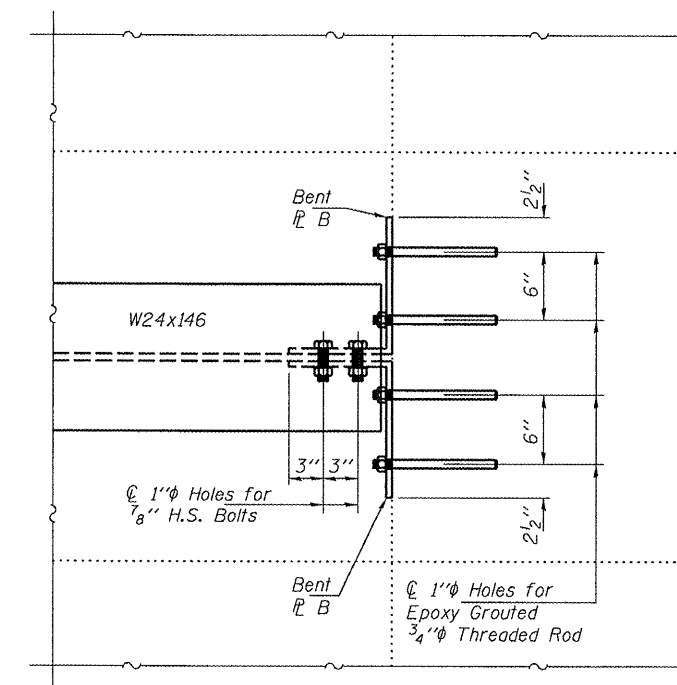
L C
L 6" x 6" x 1/2" x 2'-3"
(10 Required)



TYPICAL SECTION THRU L C



BENT PL B
PL 1/2" x 1'-8" x 1'-9"
(24 Required)



SECTION A-A

DESIGNED	DAB
CHECKED	VHV
DRAWN	Steffen
CHECKED	DAB VHV

APRIL 22, 2008
EXAMINED *Carl Perry*
ENGINEER OF STRUCTURAL SERVICES
PASSED *Ralph E. Anderson*
ENGINEER OF BRIDGES AND STRUCTURES

REPAIR DETAILS
FAP RT. 326
CHAMPAIGN COUNTY
SN 010-0055