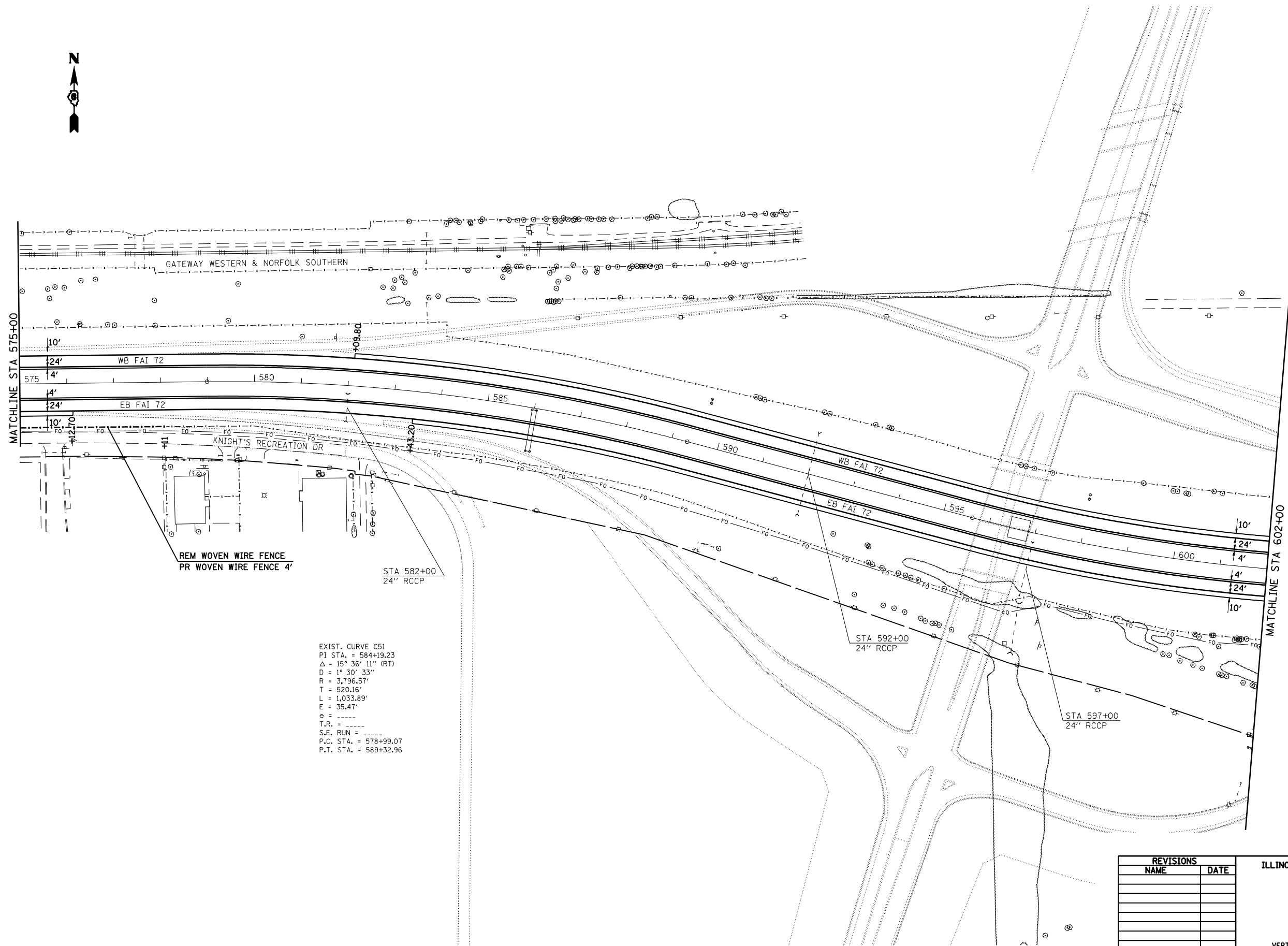


F.A.I. RTE.	SECTION	COUNTY	TOTAL SHEETS	SHEET NO.
72	(84-9)RS-6; (G)Z	SANGAMON	425	24
STA.		TO STA.		
FED. ROAD DIST. NO.	ILLINOIS	FED. AID PROJECT		



EXIST. CURVE C51
 PI STA. = 584+19.23
 $\Delta = 15^\circ 36' 11''$ (RT)
 $D = 1^\circ 30' 33''$
 $R = 3,796.57'$
 $T = 520.16'$
 $L = 1,033.89'$
 $E = 35.47'$
 $e = \text{-----}$
 $T.R. = \text{-----}$
 $S.E. RUN = \text{-----}$
 $P.C. STA. = 578+99.07$
 $P.T. STA. = 589+32.96$

PLOT DATE = Mar-19-2008 11:27:16AM
 FILE NAME = C:\Projects\4855882\hplandgn
 PLOT SCALE = 211.7643 / IN.
 USER NAME = laughlinr-1

REVISIONS	
NAME	DATE

ILLINOIS DEPARTMENT OF TRANSPORTATION
PLAN SHEET
 FAI 72 (I-72)
 SECTION (84-9)RS-6; (G)Z
 SANGAMON COUNTY
 SCALE: VERT. _____
 HORIZ. _____
 DATE _____ DRAWN BY _____
 CHECKED BY _____