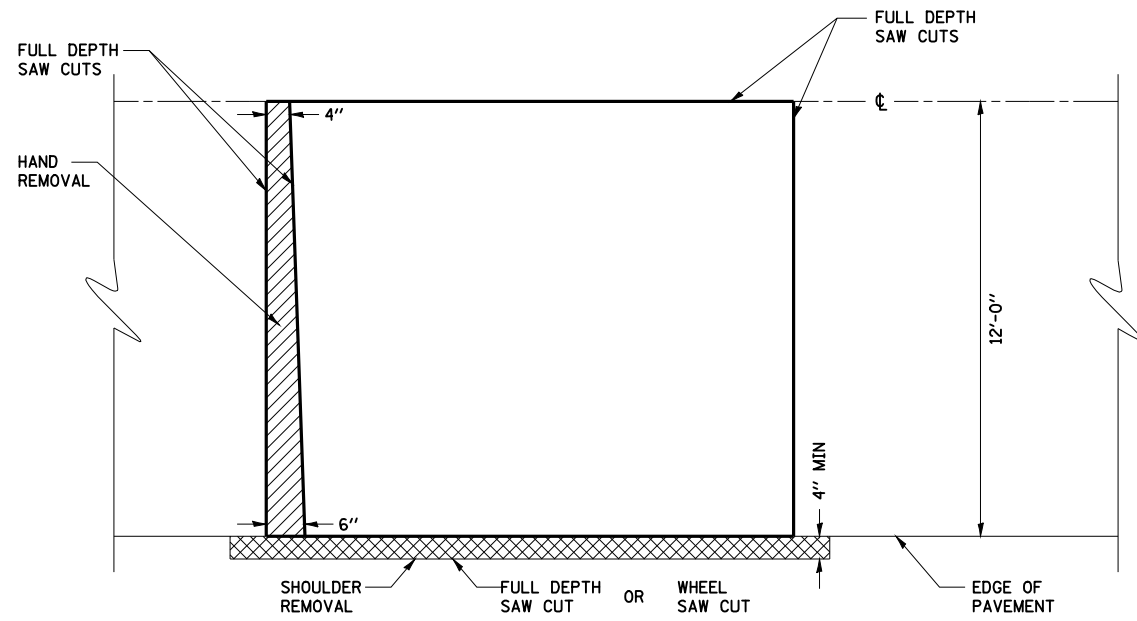
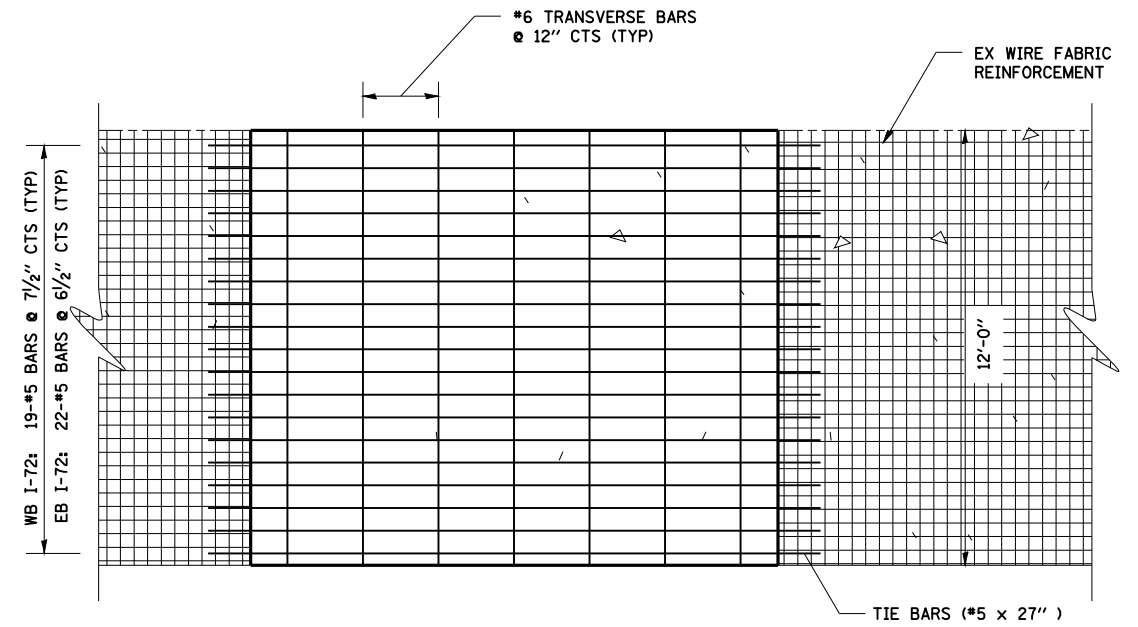


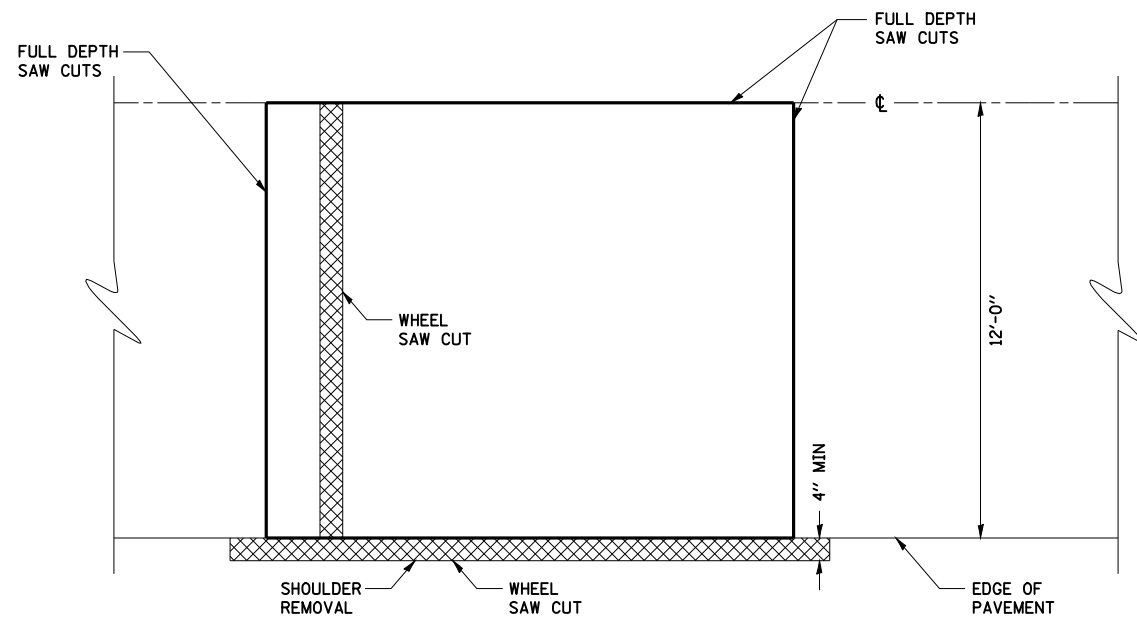
F.A.I. RTE.	SECTION	COUNTY	TOTAL SHEETS	SHEET NO.
72	(84-9)RS-6; (G)Z	SANGAMON	425	34
STA.		TO STA.		
FED. ROAD DIST. NO.	ILLINOIS	FED. AID PROJECT		



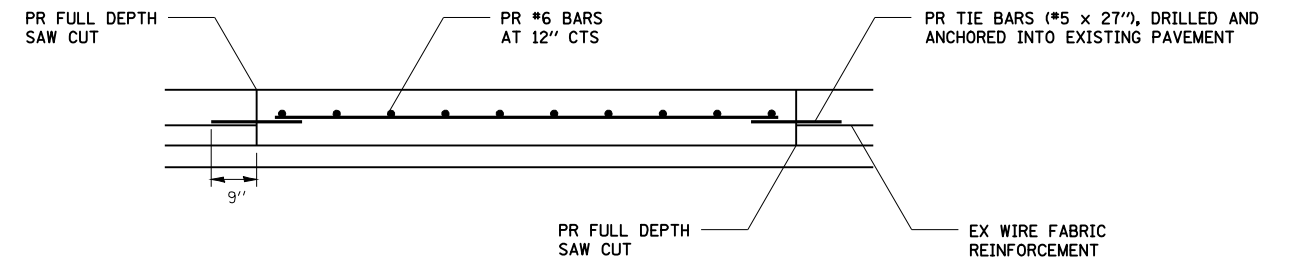
PAVEMENT SAWING DETAIL



PAVEMENT REINFORCEMENT DETAIL



ALTERNATE SAWING DETAIL



PATCHING DETAIL

NOTES:

TIE BARS (#5 x 27") SHALL BE ANCHORED INTO EXISTING PAVEMENT IN ACCORDANCE WITH ARTICLE 442.06 (a)(2) OF THE STANDARD SPECIFICATIONS.

SEE STANDARD 442001 FOR ADDITIONAL DETAILS.

REVISIONS	
NAME	DATE

ILLINOIS DEPARTMENT OF TRANSPORTATION
 CLASS A PATCH (SPECIAL) DETAIL
 FAI 72
 SECTION (84-9)RS-6
 SANGAMON COUNTY

SCALE: VERT.
 HORIZ.
 DATE

DRAWN BY
 CHECKED BY

PLOT DATE = Mar-19-2008 11:27:39AM
 FILE NAME = C:\Projects\48555802\hd\detail.dgn
 PLOT SCALE = 1/8"=1'-0" / IN.
 USER NAME = laughlinr-1